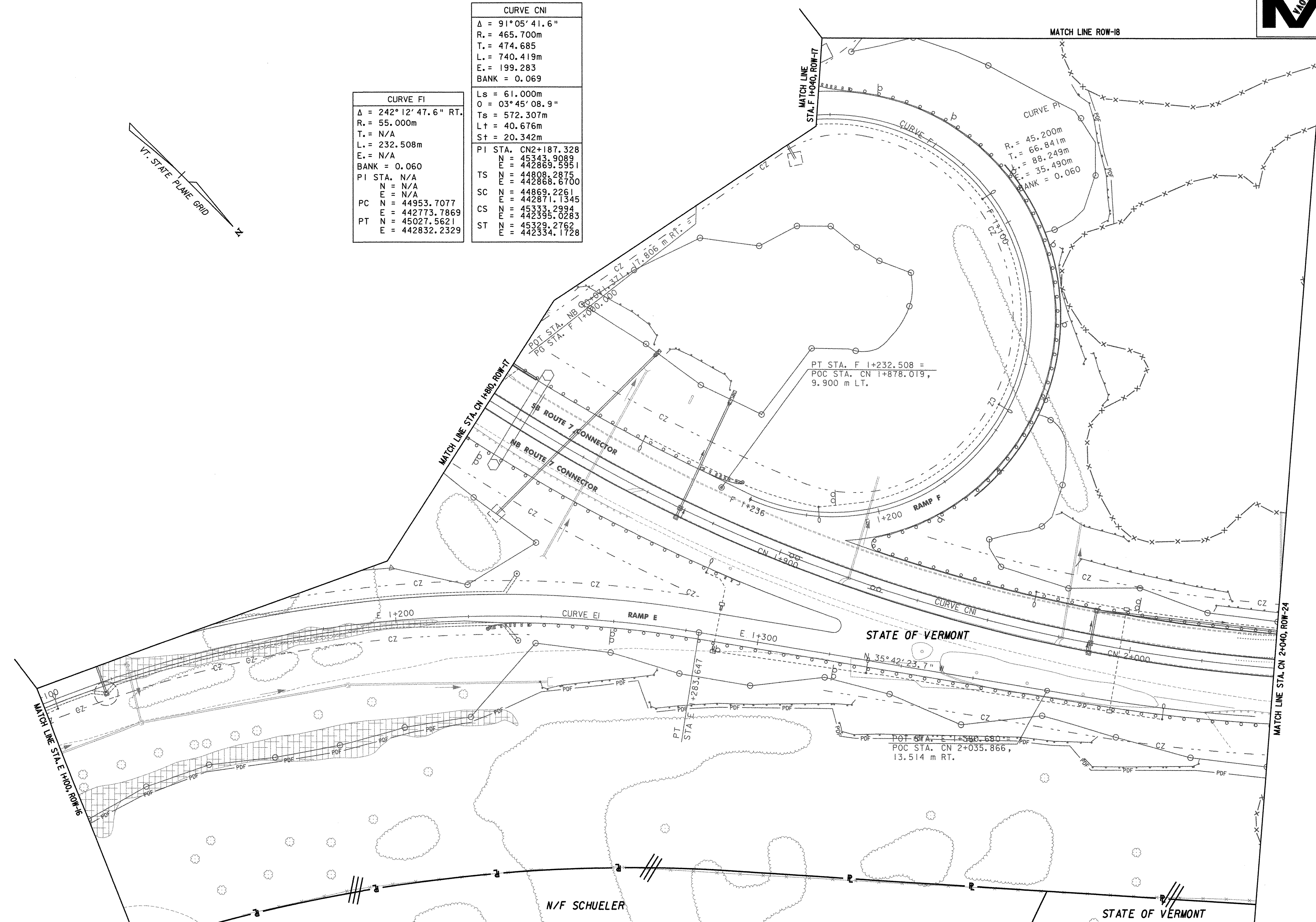


CURVE FI	
Δ	= 242° 12' 47.6" RT.
R.	= 55.000m
T.	= N/A
L.	= 232.508m
E.	= N/A
BANK	= 0.060
PI STA.	N/A
N	= N/A
E	= N/A
PC	N = 44953.7077 E = 442773.7869
PT	N = 45027.5621 E = 442832.2329

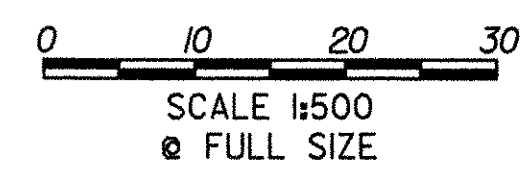
CURVE CNI	
Δ	= 91° 05' 41.6"
R.	= 465.700m
T.	= 474.685
L.	= 740.419m
E.	= 199.283
BANK	= 0.069
Ls	= 61.000m
O	= 03° 45' 08.9"
Ts	= 572.307m
Lt	= 40.676m
St	= 20.342m
PI STA.	CN2+187.328
N	= 45343.9089
E	= 442869.5951
TS	N = 44808.2875 E = 442868.6700
SC	N = 44869.2261 E = 442871.1345
CS	N = 45333.2994 E = 442395.0283
ST	N = 45329.2762 E = 442334.1728



LINES SHOWN ON THIS PLAN AS EXISTING PROPERTY LINES P/L ARE BELIEVED TO BE ACCURATE BUT SHOULD NOT BE RELIED UPON FOR PURPOSES UNRELATED TO THE STATE OF VERMONT'S ACQUISITION OF LAND AND RIGHTS FOR THIS PROJECT.

THIS SHEET TO BE USED FOR RIGHT-OF-WAY INFORMATION ONLY

DATUM
VERTICAL NAVD 88
HORIZONTAL NAD 83 (1992)



R.O.W. PLAN
ROW-23

PROJECT NAME: BENNINGTON BYPASS	PROJECT NUMBER: NH FO19-1(5)
DESIGN FILE NAME: c:\dh\bennington\row	PLOT DATE: 12-06-05
PROJECT LEADER: JDP	DRAWN BY: MBB
	CHECKED BY: GAK
SHEET: 95 OF 112	