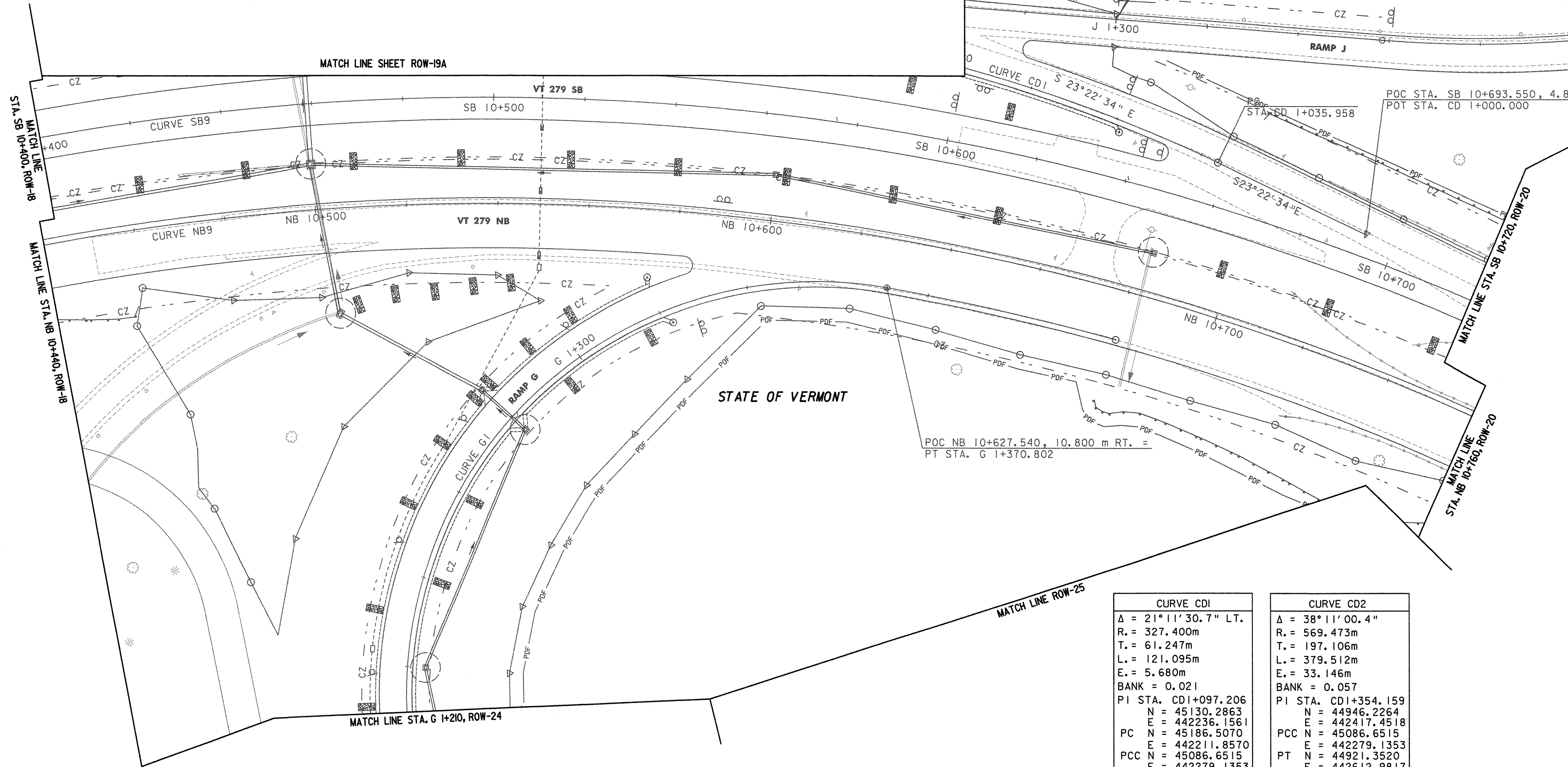
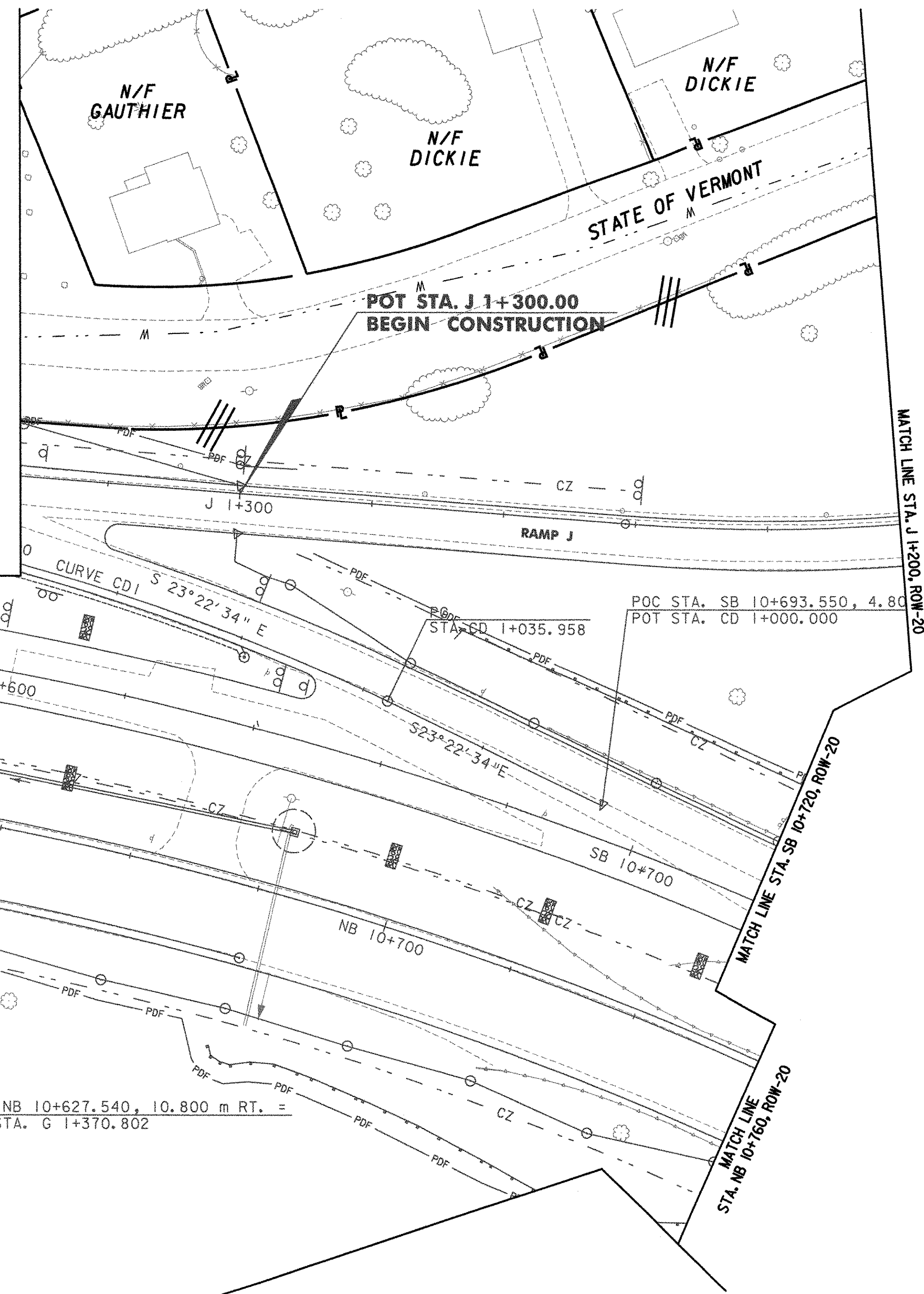
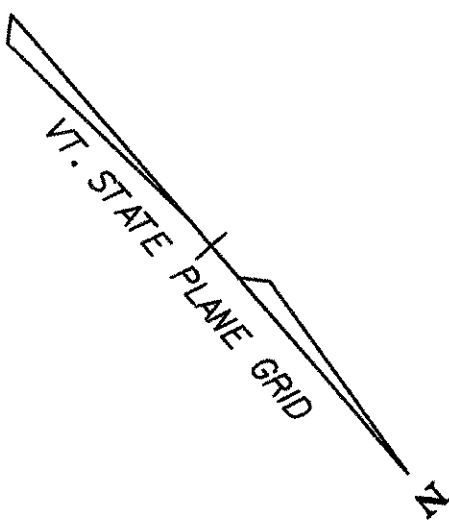


CURVE G1	
Δ = 236°03'34.7" RT.	
R. = 90.000m	
T. = N/A	
L. = 370.802m	
E. = N/A	
BANK = 0.060	
PI STA. G1+396.514	
N = 45179.3415	
E = 442268.2761	
PC N = 45305.8601	
E = 442346.1949	
PCC N = 45159.4245	
E = 442284.5381	
PT N = 45200.7744	
E = 442254.0714	

CURVE NB9	
Δ = 76°32'26.4"	
R. = 527.595m	
T. = 416.226m	
L. = 704.807m	
E. = 144.417m	
BANK = 0.079	
Ls = 60.400m	
Os = 3°16'46.8"	
Ts = 498.050m	
Lt = 40.274m	
St = 20.140m	
PI STA. NB10+673.238	
NZ = 45043.6252	
EZ = 442179.2121	
TS N = 44958.7993	
EZ = 44958.7993	
SC N = 44967.5622	
EZ = 442588.4319	
CS N = 45459.3070	
EZ = 442157.9418	
ST N = 45519.6931	
EZ = 442157.1585	

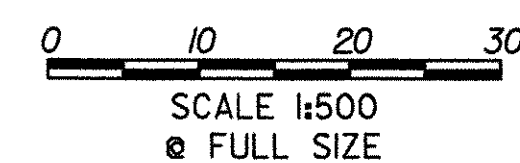
CURVE SB9	
Δ = 76°40'45.2"	
R. = 550.702m	
T. = 435.537m	
L. = 737.007m	
E. = 151.413m	
BANK = 0.079	
Ls = 61.713m	
Os = 3°12'37.3"	
Ts = 519.185m	
Lt = 41.149m	
St = 20.577m	
PI STA. SB10+640.432	
N = 45023.7967	
E = 442156.5660	
TS N = 44935.7938	
E = 442645.9195	
SC N = 44944.7226	
E = 4425844.8645	
CS N = 45458.7909	
E = 442134.8315	
ST N = 45520.4904	
E = 442134.0560	



LINES SHOWN ON THIS PLAN AS EXISTING PROPERTY LINES P/L ARE BELIEVED TO BE ACCURATE BUT SHOULD NOT BE RELIED UPON FOR PURPOSES UNRELATED TO THE STATE OF VERMONT'S ACQUISITION OF LAND AND RIGHTS FOR THIS PROJECT.

THIS SHEET TO BE USED FOR RIGHT-OF-WAY INFORMATION ONLY

DATUM
 VERTICAL NAVD 88
 HORIZONTAL NAD 83 (1992)



**R.O.W.
 PLAN
 ROW-19**

PROJECT NAME: **BENNINGTON BYPASS**
 DESIGN FILE NAME: c:\dh\bennington\row
 PROJECT LEADER: JDP

PROJECT NUMBER: **NH FO19-1(5)**
 PLOT DATE: 12-06-05
 DRAWN BY: MBB
 CHECKED BY: GAK
 SHEET: **90** OF **112**

CURVE CDI	
Δ = 21°11'30.7" LT.	
R. = 327.400m	
T. = 61.247m	
L. = 121.095m	
E. = 5.680m	
BANK = 0.021	
PI STA. CDI+097.206	
N = 45130.2863	
E = 442236.1561	
PC N = 45186.5070	
E = 442211.8570	
PCC N = 45086.6515	
E = 442279.1353	

CURVE CD2	
Δ = 38°11'00.4"	
R. = 569.473m	
T. = 197.106m	
L. = 379.512m	
E. = 33.146m	
BANK = 0.057	
PI STA. CD1+354.159	
N = 44946.2264	
E = 442417.4518	
PCC N = 45086.6515	
E = 442279.1353	
PT N = 44921.3520	
E = 442612.9817	