

TYPICAL SECTION RT 9 INTERCHANGE - RAMPS A&D

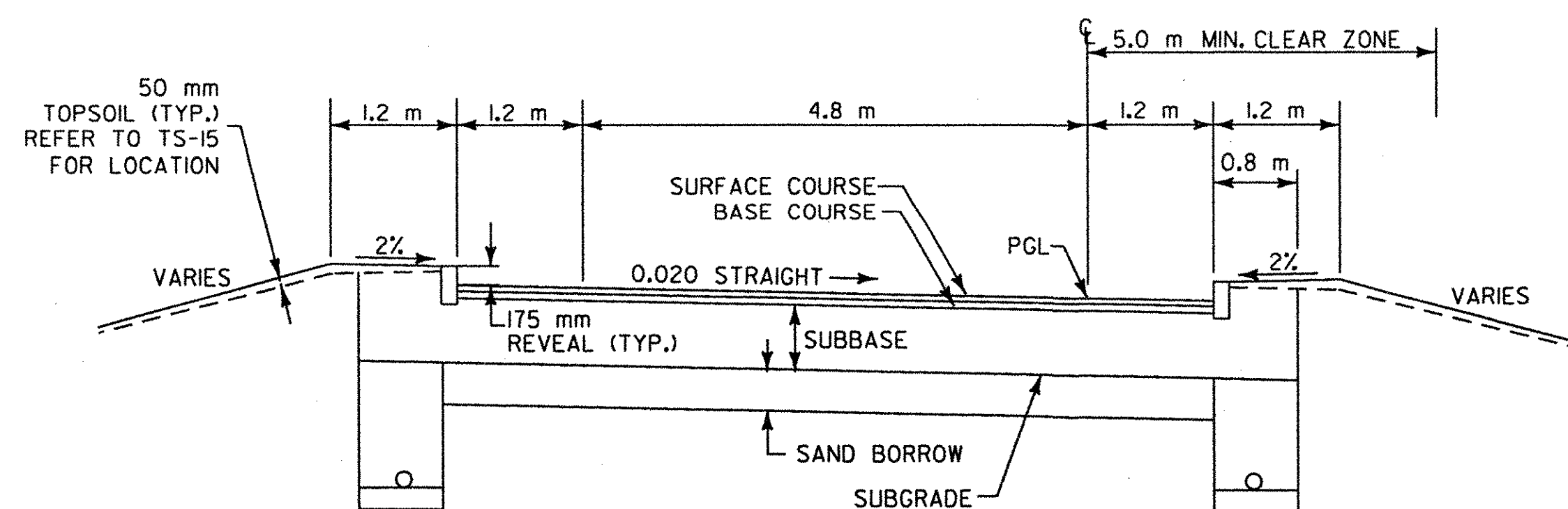


MATERIAL ITEM	THICKNESS TOLERANCE
PAVEMENT COURSES (TOTAL DEPTH)	+/- 5 mm
BASE COURSES (TOTAL DEPTH)	+/- 15 mm
SUBBASE	+/- 30 mm
SAND BORROW	+/- 30 mm

130 mm SUPERPAVE BITUMINOUS CONCRETE PAVEMENT (50 mm TYPE IIS, 80 mm TYPE IIS)
 100 mm BASE COURSE, SUPERPAVE BITUMINOUS CONCRETE PAVEMENT, TYPE IS
 600 mm SUBBASE OF DENSE GRADED CRUSHED STONE
 400 mm SAND BORROW
 SHOULDERS: 130 mm BITUMINOUS CONCRETE PAVEMENT (50 mm TYPE IIS, 80 mm TYPE IIS)

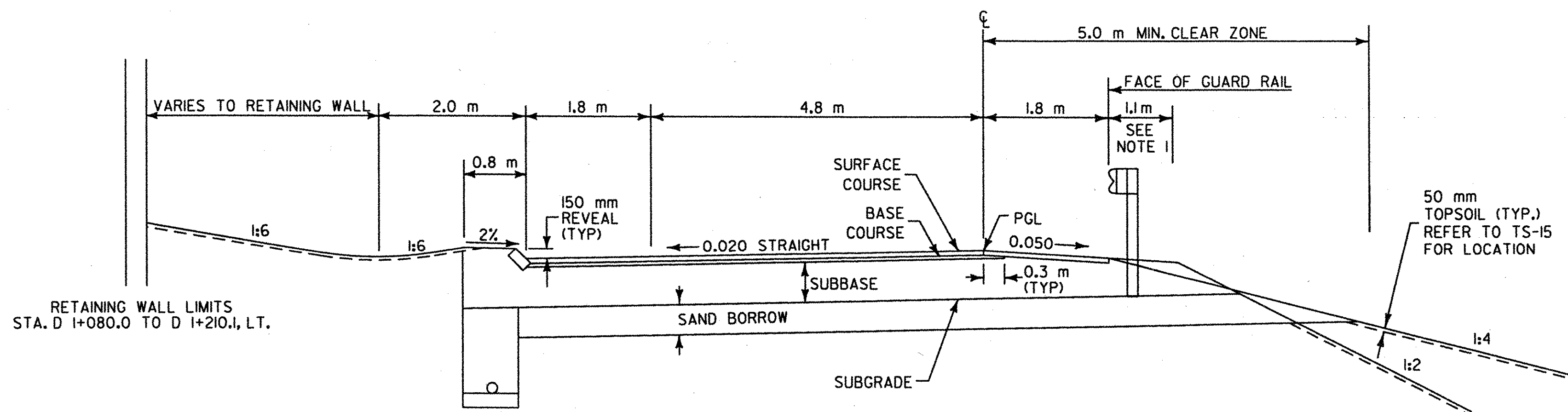
NOTES:

1. ELIMINATE TOPSOIL AND SEEDING BEHIND GUARD RAIL TO SUBGRADE CATCH POINT.
2. FOR SLOPES IN SOLID ROCK EXCAVATION AND DRILLING AND BLASTING OF SOLID ROCK SUBGRADE, SEE STD. SHEET A-60M AND A-62M AND DETAILS
3. REFER TO TYPICAL SECTION SHEET, TS-15 FOR SEEDING FORMULA AND ADDITIONAL GENERAL NOTES.

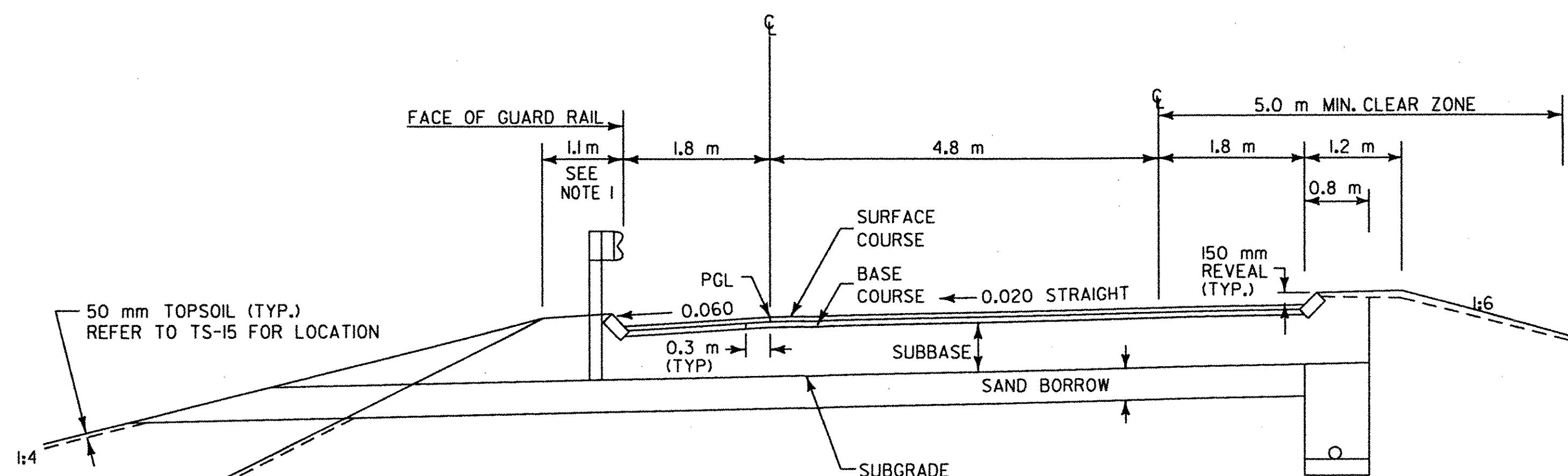


VERTICAL CURB SECTION
STA. A 1+048 - STA. A 1+077
STA. D 1+045 - STA. D 1+080
STA. AS 1+000 - STA. AS 1+029
STA. DS 1+000 - STA. AS 1+036

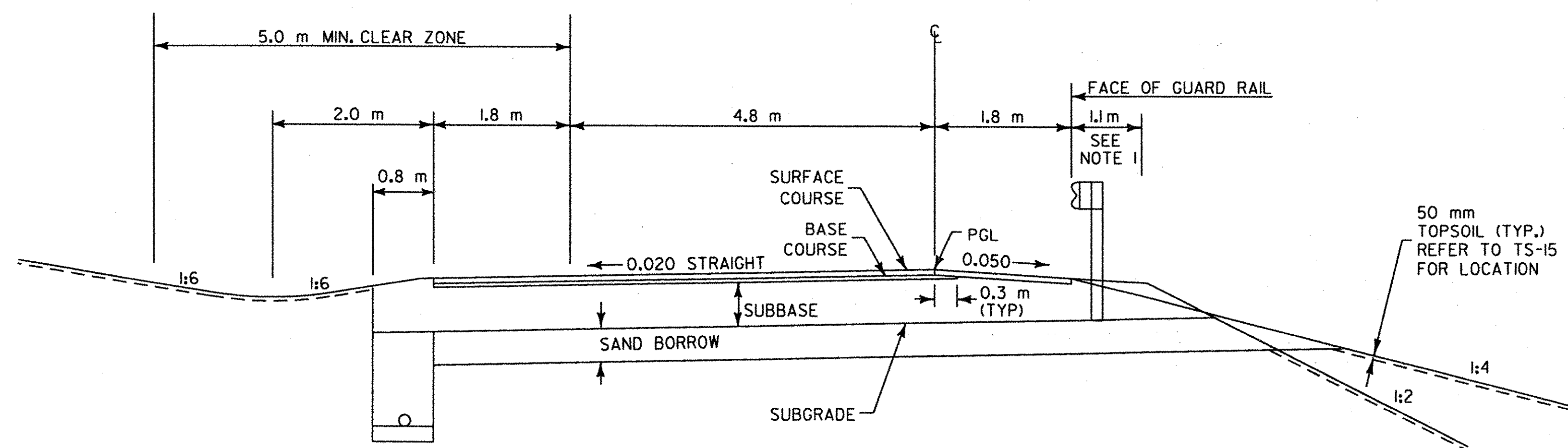
NOTE:
 1) DESIGN FROST DEPTH - 1230 mm



NORMAL SECTION
STA. D 1+080 - STA. D 1+235
 GRANITE SLOPE EDGING MATCHES TO BRIDGE CURB ON SHEET P-6 AT STATION D 1+226.0



NORMAL SECTION
STA. A 1+077 - STA. A 1+241
 GRANITE SLOPE EDGING MATCHES TO BRIDGE CURB ON SHEET P-6 AT STATION A 1+234.0



NORMAL SECTION NO CURB
STA. A 1+389 - STA. A 1+600
STA. D 1+381 - STA. D 1+591

VERMONT AGENCY OF TRANSPORTATION



PROJECT NAME: BENNINGTON
 PROJECT NUMBER: NH F019-(15)

REVISED

FILE NAME: ...Highway\PlotFiles\typicals.pxf PLOT DATE: 11/20/2004
 DESIGN SUPERVISOR: GREG EDWARDS DRAWN BY: DUFRESNE-HENRY
 DESIGNED BY: MARC FOISY CHECKED BY: GARY SANTY
TYPICAL TS-05 SHEET 7 OF 112

PGL=PROFILE GRADE LINE