

646.40 - DURABLE 4" WHITE LINE

(TYPE I, TAPE)
 14+91 - 15+70 (DIAGONALS) (775')
 15+15 - 15+78 (8' LT.)
 15+78 - 16+43 (40' LT.)
 17+10 - 17+39 (40' LT.)
 17+71 - 17+91 (40' LT.)
 18+34 (24' LT.) - 19+32 (20' LT.) (DOTTED LINE)
 18+42 - 18+68 (8' LT.)
 19+00 - 19+26 (8' LT.)
 19+32 (24' LT.) - 20+26 (20' LT.) (LANE LINE)
 19+62 - 20+00 (8' LT.)

646.60 - TEMPORARY 4" WHITE LINE

(PAINT)
 15+15 - 15+78 (8' LT.) (2 APPLICATIONS)
 15+78 - 16+43 (40' LT.) (2 APPLICATIONS)
 17+10 - 17+39 (40' LT.) (2 APPLICATIONS)
 17+71 - 17+91 (40' LT.) (2 APPLICATIONS)
 18+34 (24' LT.) - 19+32 (20' LT.) (DOTTED LINE) (2 APPLICATIONS)
 18+42 - 18+68 (8' LT.) (2 APPLICATIONS)
 19+00 - 19+26 (8' LT.) (2 APPLICATIONS)
 19+32 (24' LT.) - 20+26 (20' LT.) (LANE LINE) (2 APPLICATIONS)
 19+62 - 20+00 (8' LT.) (2 APPLICATIONS)

646.81 - PAINTED CURB

14+35 - 14+89 (0' LT) (54')
 16+02 - 16+40 (0' LT) (38')

646.50 - DURABLE LETTER OR SYMBOL

(THERMOPLASTIC)
 MANSION ST. (S,T,O,P)
 UNION ST. (S,T,O,P)
 PLATT ST. (S,T,O,P)
 19+35 (14' LT.)
 19+35 (26' LT.)
 19+74 (26' LT.) (O,N,L,Y)

646.70 - TEMPORARY LETTER OR SYMBOL

(PAINT)
 MANSION ST. (S,T,O,P) (2 APPLICATIONS)
 UNION ST. (S,T,O,P) (2 APPLICATIONS)
 PLATT ST. (S,T,O,P) (2 APPLICATIONS)
 19+35 (14' LT.) (2 APPLICATIONS)
 19+35 (26' LT.) (2 APPLICATIONS)

646.41 - DURABLE 4" YELLOW LINE

(TYPE I, TAPE)
 14+41 (32' LT.) - 15+05 (24' LT.) (DBL.)
 15+05 - 16+49 (24' LT.) (DBL.)
 16+89 - 17+06 (24' LT.) (DBL.)
 17+46 - 18+34 (24' LT.) (DBL.)
 18+34 (24' LT.) - 19+32 (34' LT.) (DBL.)
 19+32 - 20+00 (34' LT.) (DBL.)
 14+21 RT. 15' (MANSION ST.) (DBL.)
 16+69 LT. 35' (UNION ST.) (DBL.)
 17+26 RT. 17' (PLATT ST.) (DBL.)

646.61 - TEMPORARY 4" YELLOW LINE

(PAINT)
 14+41 (32' LT.) - 15+05 (24' LT.) (DBL.) (2 APPLICATIONS)
 15+05 - 16+49 (24' LT.) (DBL.)
 16+89 - 17+06 (24' LT.) (DBL.) (2 APPLICATIONS)
 17+46 - 18+34 (24' LT.) (DBL.) (2 APPLICATIONS)
 18+34 (24' LT.) - 19+32 (34' LT.) (DBL.) (2 APPLICATIONS)
 19+32 - 20+00 (34' LT.) (DBL.) (2 APPLICATIONS)
 14+21 RT. 15' (MANSION ST.) (DBL.) (2 APPLICATIONS)
 16+69 LT. 35' (UNION ST.) (DBL.) (2 APPLICATIONS)
 17+26 RT. 17' (PLATT ST.) (DBL.) (2 APPLICATIONS)

646.46 - DURABLE 24" WHITE LINE

(THERMOPLASTIC)
 MANSION ST. (15')
 UNION ST. (15')
 PLATT ST. (16')

646.66 - TEMPORARY 24" WHITE LINE

(PAINT)
 MANSION ST. (15') (2 APPLICATIONS)
 UNION ST. (15') (2 APPLICATIONS)
 PLATT ST. (16') (2 APPLICATIONS)

618.10 - PORTLAND CEMENT CONCRETE SIDEWALK, 5" (MOD.)

14+00 RT - 14.55 SY
 14+38 RT - 7.56 SY
 16+55.5 LT - 15 SY
 16+82.5 LT - 13.89 SY
 17+02 RT - 13.78 SY
 17+40 RT - 16.45 SY

646.51 DURABLE CROSSWALK MARKING W/DIAG. LINES (MOD.)

(THERMOPLASTIC)
 MANSION ST. (33')
 UNION ST. (33')
 PLATT ST. (35')

646.71 TEMPORARY CROSSWALK MARKING W/DIAG LINES (MOD.)

(PAINT)
 MANSION ST. (33') (2 APPLICATIONS)
 UNION ST. (33') (2 APPLICATIONS)
 PLATT ST. (35') (2 APPLICATIONS)

675.50 REMOVING SIGNS

AS SHOWN - 12

516.10 BRIDGE EXPANSION JOINT

14+05 (48')

604.412 - REHABING DI,CB OR MH

14+47 - @ CURB RT (DI)
 15+57 - @ CURB RT (DI)
 15+57 - 48' LT (DI)
 17+07 - 48' LT (DI)
 17+59 - @ CURB RT (DI)
 18+96 - @ CURB RT (DI)
 18+98 LT (DI)
 14+30 LT

629.20 - ADJUST ELEVATION OF VALVE BOXES

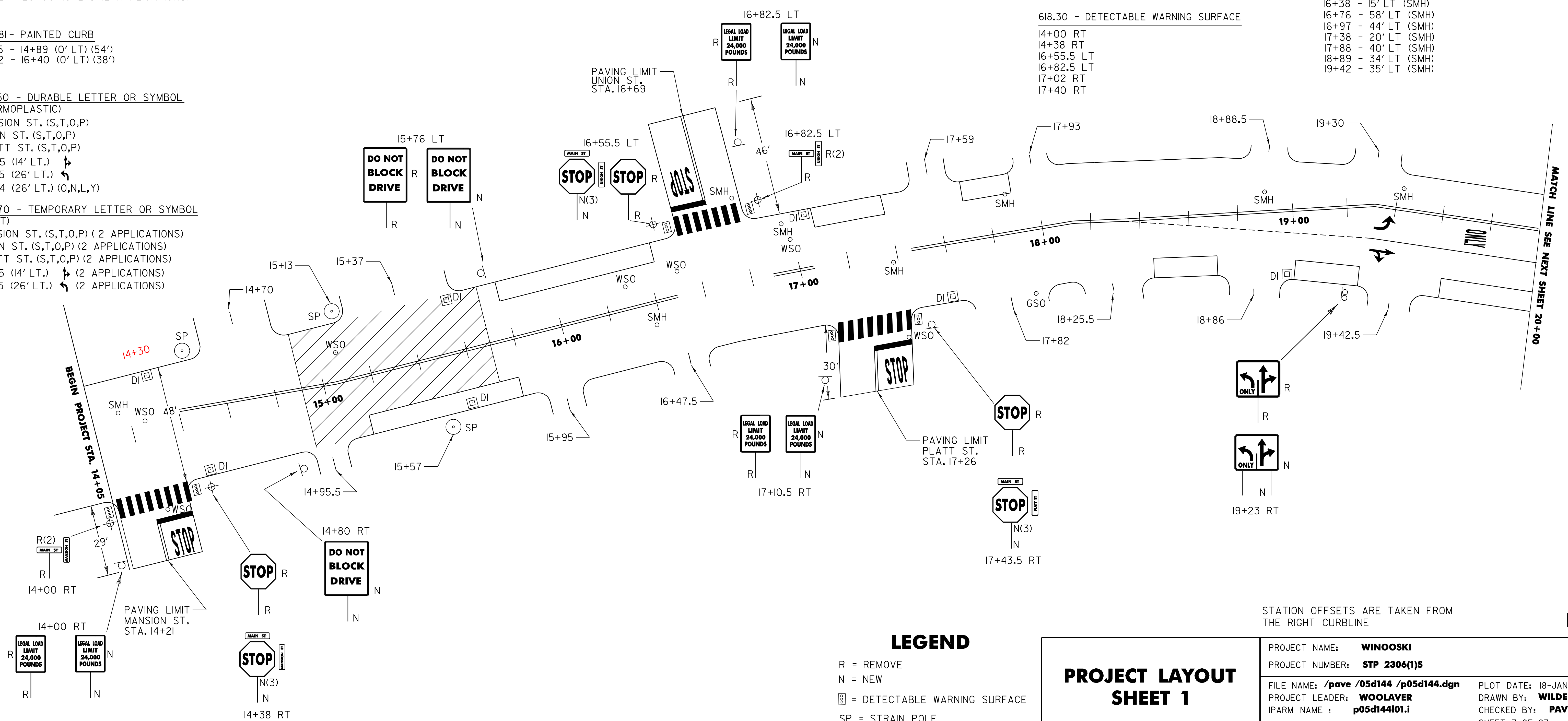
14+26 - 28' LT (WSO)
 14+26 - 9' RT (WSO)
 15+08 - 36' LT (WSO)
 16+29 - 33' LT (WSO)
 16+51 - 34' LT (WSO)
 16+99 - 37' LT (WSO)
 17+38 - 11' RT (WSO)
 17+93 - 2' RT (GSO)

618.30 - DETECTABLE WARNING SURFACE

14+00 RT
 14+38 RT
 16+55.5 LT
 16+82.5 LT
 17+02 RT
 17+40 RT

604.42 - CHANGE ELEVATION OF SEWER MANHOLES

14+16 - 16' LT (SMH)
 16+38 - 15' LT (SMH)
 16+76 - 58' LT (SMH)
 16+97 - 44' LT (SMH)
 17+38 - 20' LT (SMH)
 17+88 - 40' LT (SMH)
 18+89 - 34' LT (SMH)
 19+42 - 35' LT (SMH)



LEGEND

- R = REMOVE
- N = NEW
- [Symbol] = DETECTABLE WARNING SURFACE
- SP = STRAIN POLE

PROJECT LAYOUT SHEET 1

PROJECT NAME:	WINOOSKI	PLOT DATE:	18-JAN-2008 11:43
PROJECT NUMBER:	STP 2306(1)S	DRAWN BY:	WILDER
FILE NAME:	/pave /05d144 /p05d144.dgn	CHECKED BY:	PAVT MGMT
PROJECT LEADER:	WOOLAVER	SHEET 7 OF 23	
IPARM NAME :	p05d144i01.i		

NTS

STATION OFFSETS ARE TAKEN FROM THE RIGHT CURBLINE