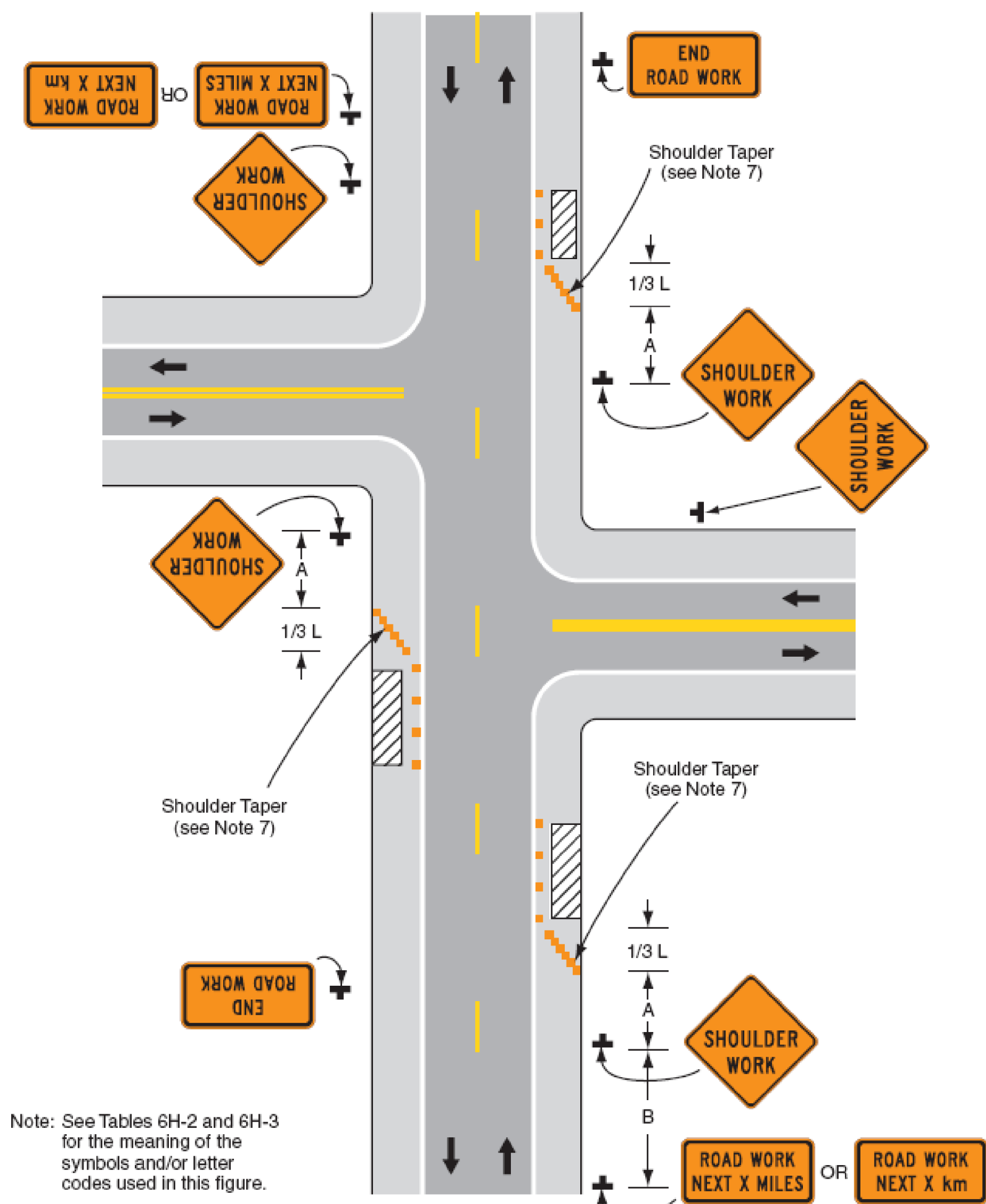
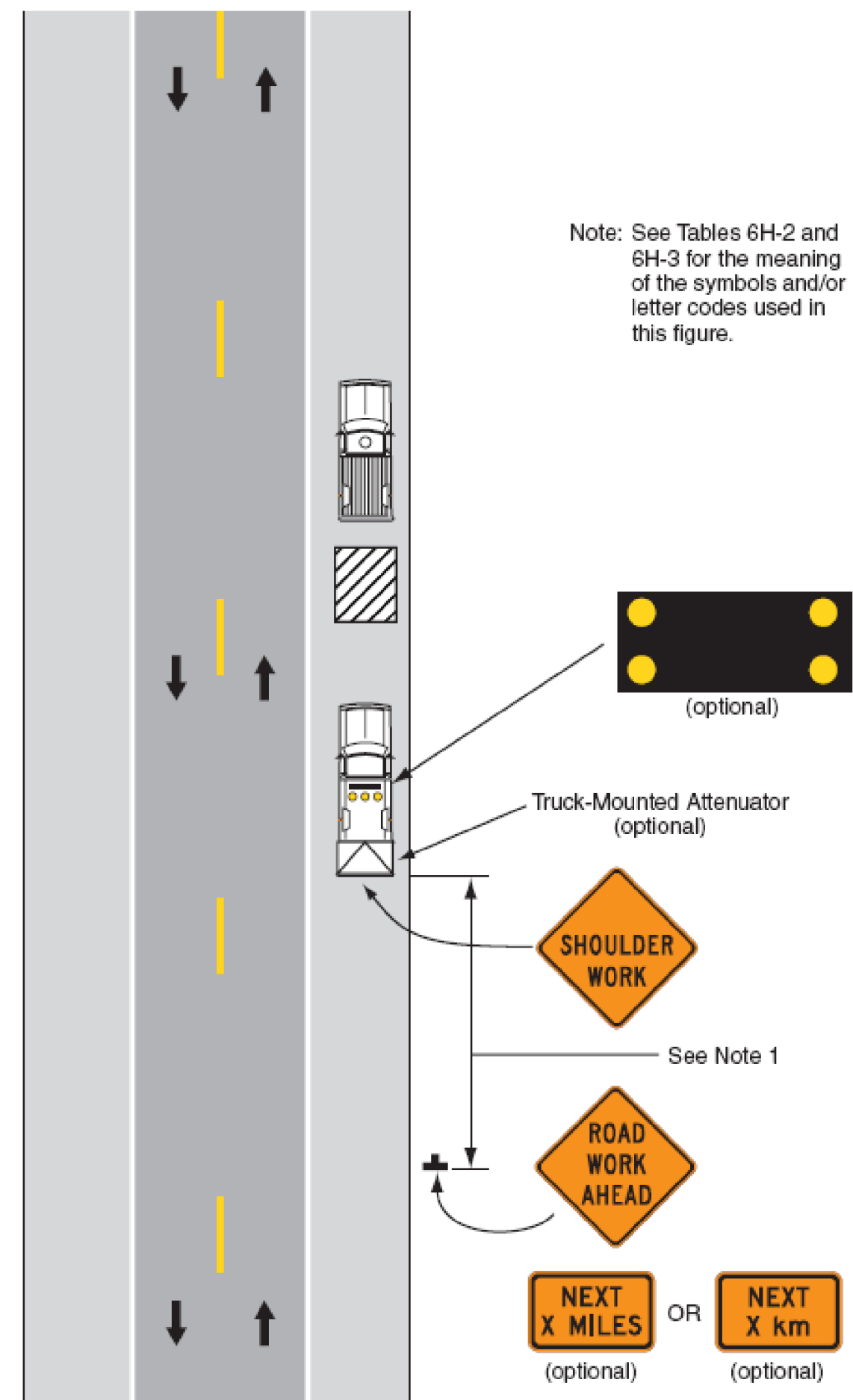


Figure 6H-3. Work on Shoulders (TA-3)



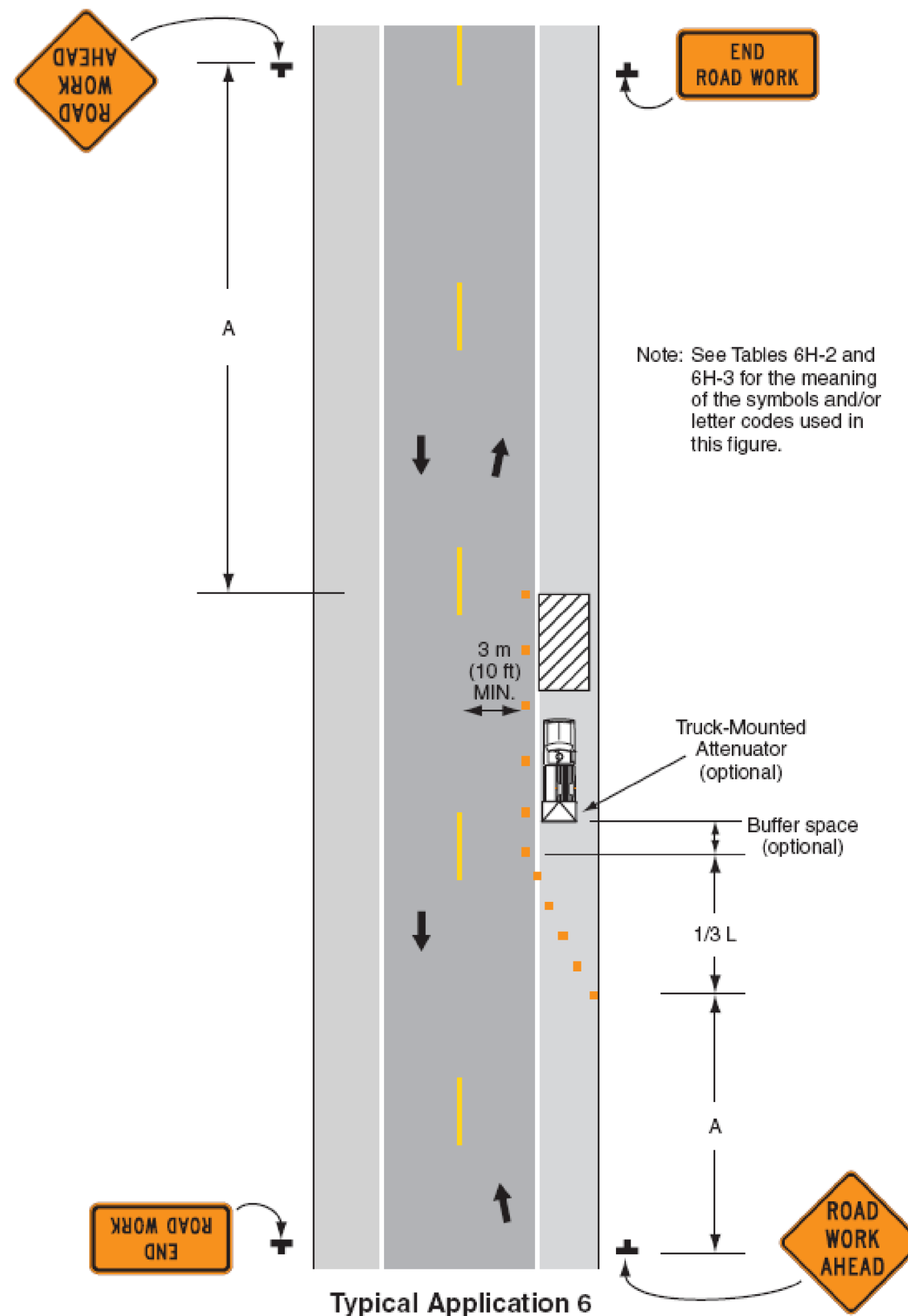
Typical Application 3

Figure 6H-4. Short-Duration or Mobile Operation on Shoulder (TA-4)



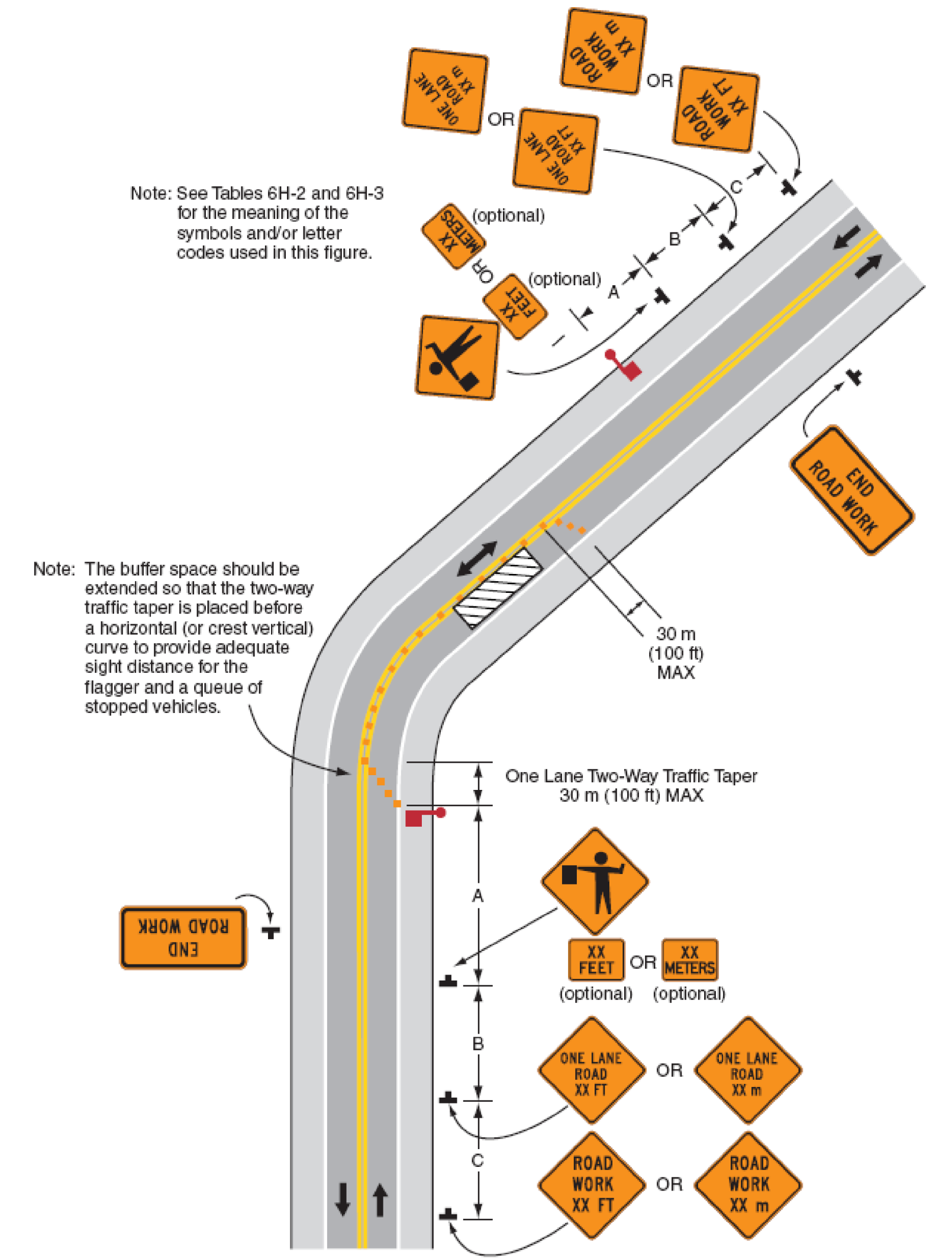
Typical Application 4

Figure 6H-6. Shoulder Work with Minor Encroachment (TA-6)



Typical Application 6

Figure 6H-10. Lane Closure on Two-Lane Road Using Flaggers (TA-10)



Typical Application 10

NOTE:
ALL TYPICAL APPLICATIONS TAKEN FROM PART #6
OF THE 2003 EDITION OF THE MANUAL ON UNIFORM
TRAFFIC CONTROL DEVICES

PROJECT NAME:	PUTNEY	
PROJECT NUMBER:	STPG SIGN (13)	
FILE NAME:	STPG SIGN (13).DGN	PLOT DATE: 12-DEC-2008 13:2
PROJECT LEADER:	N. AVERY	DRAWN BY: N. AVERY
DESIGNED BY:	N. AVERY & M. MILLER	CHECKED BY: A. GAMBLE
SIGN(13)TTC02		SHEET 38 OF 38