

TEMPORARY 4in YELLOW LINE (PAINT)  
 DURABLE 4in YELLOW LINE (THERMOPLASTIC)

STA 225+00 TO 241+00 SOLID LT&RT  
 STA 230+20 DOUBLE SOLID LT  
 STA 230+60 DOUBLE SOLID RT  
 STA 236+64 DOUBLE SOLID RT  
 STA 239+34 DOUBLE SOLID RT  
 (WITH CENTERLINE BREAKS FOR TOWN HIGHWAYS)

TEMPORARY LETTER OR SYMBOL (PAINT)  
 DURABLE LETTER OR SYMBOL (THERMOPLASTIC)

STA 230+20 LT "STOP"  
 STA 230+60 RT "STOP"  
 STA 230+80 LT "SCHOOL"  
 STA 236+64 RT "STOP"  
 STA 239+34 RT "STOP"

TEMPORARY 4in WHITE LINE (PAINT)  
 DURABLE 4in WHITE LINE (THERMOPLASTIC)

STA 225+00 TO 241+00 SOLID LT&RT  
 (WITH EDGELINE BREAKS FOR TOWN HIGHWAYS)

TEMPORARY 24in STOP BAR (PAINT)  
 DURABLE 24in STOP BAR (THERMOPLASTIC)

STA 230+20 LT TH #71  
 STA 230+60 RT TH #33  
 STA 236+64 RT TH #32  
 STA 239+34 RT TH #32

REMOVING SIGNS  
 9

CHANGE ELEVATION OF SEWER MANHOLE

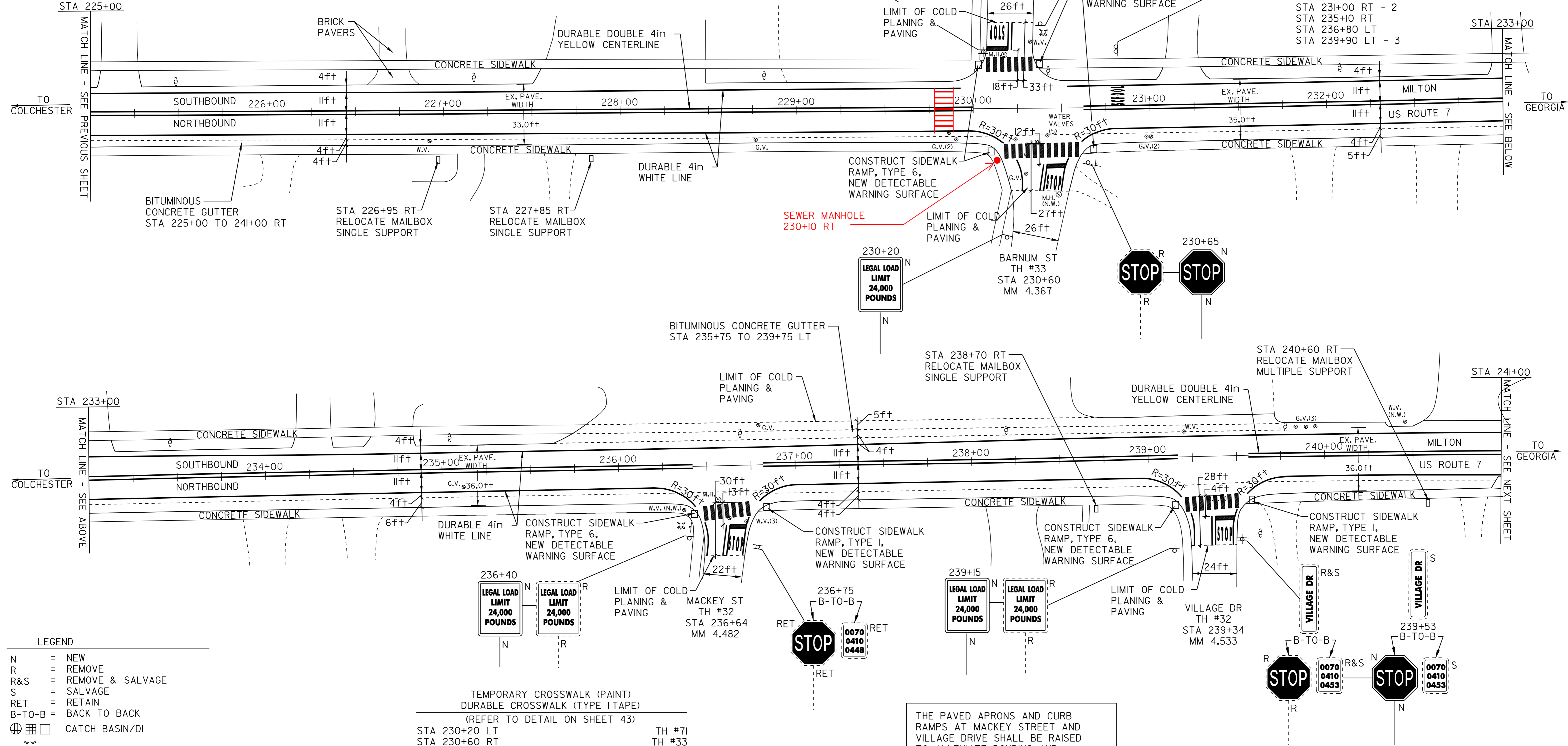
STA 230+17 LT  
 STA 236+56 RT  
 STA 239+42 RT

ADJUST ELEVATION OF VALVE BOX

STA 226+92 RT  
 STA 230+60 RT - 5, LT - 1  
 STA 236+65 RT - 3  
 STA 239+20 LT

ADJUST ELEVATION OF GAS VALVES  
 (TO BE DONE BY OTHERS)

STA 228+77 RT  
 STA 229+88 RT - 2  
 STA 230+30 RT  
 STA 231+00 RT - 2  
 STA 235+10 RT  
 STA 236+80 LT  
 STA 239+90 LT - 3



**LEGEND**

N = NEW  
 R = REMOVE  
 R&S = REMOVE & SALVAGE  
 S = SALVAGE  
 RET = RETAIN  
 B-T-O-B = BACK TO BACK

☐ CATCH BASIN/DI  
 ⚙ EXISTING HYDRANT  
 ⊕ EXISTING VALVE (WATER,GAS)  
 ○<sub>S,E,T</sub> EXISTING MANHOLE (SEWER,ELECTRIC,TEL.)  
 (N.W.) = NO WORK REQUIRED (TYP. FOR VALVES, M.H.'S, & C.B.'S WHERE NOTED)  
 ⚡ UTILITY POLE  
 --- DRIVE

TEMPORARY CROSSWALK (PAINT)  
 DURABLE CROSSWALK (TYPE I TAPE)  
 (REFER TO DETAIL ON SHEET 43)

STA 230+20 LT TH #71  
 STA 230+60 RT TH #33  
 STA 236+64 RT TH #32  
 STA 239+34 RT TH #32

RELOCATE MAILBOX, SINGLE SUPPORT

STA 226+95 RT  
 STA 227+85 RT  
 STA 238+70 RT

RELOCATE MAILBOX, MULTIPLE SUPPORT

STA 240+60 RT - 2

BITUMINOUS CONCRETE GUTTER  
 (SEE DETAIL, SHEET 3)

STA 225+00 TO 241+00 RT  
 STA 235+75 TO 239+75 LT

THE PAVED APRONS AND CURB RAMP AT MACKEY STREET AND VILLAGE DRIVE SHALL BE RAISED TO ALLEVIATE PONDING AND ALLOW FOR PROPER DRAINAGE.

- TO THE EXTENT POSSIBLE, THE LOW POINT AT THE INTERSECTIONS SHALL OCCUR AT THE BITUMINOUS GUTTER.

## PAVING PROJECT LAYOUT SHEET #15

DESIGNED BY BCE/PJM DATE 8-06

DRAWN BY C.E.A., INC. DATE 8-06

DESIGN FILE NO. 05c158.dgn

PRF FILE 05c158p15.1 DATE PLOTTED 19-MAY-2009 12

PROJ. NAME **MILTON - GEORGIA**

PROJ. NO. **STP 2510(1)S**

SHEET **23** OF **44** SHEETS