

TEMPORARY 4in YELLOW LINE (PAINT)  
 DURABLE 4in YELLOW LINE (THERMOPLASTIC)

STA 193+00 TO 204+82 SOLID LT&RT  
 STA 193+88 DOUBLE SOLID RT  
 STA 203+90 DOUBLE SOLID RT  
 STA 204+82 TO 207+13 DOUBLE SOLID RT  
 STA 207+13 TO 209+00 DOUBLE SOLID RT  
 STA 207+15 SOLID LT&RT  
 (WITH CENTERLINE BREAKS FOR TOWN HIGHWAYS)

TEMPORARY 4in WHITE LINE (PAINT)  
 DURABLE 4in WHITE LINE (THERMOPLASTIC)

STA 193+00 TO 209+00 SOLID LT&RT  
 STA 207+42 TO 208+15 SOLID LT  
 STA 208+15 TO 208+81 DOTTED LT&RT  
 STA 208+81 TO 209+00 SOLID RT  
 (WITH EDGELINE BREAKS FOR TOWN HIGHWAYS)

TEMPORARY LETTER OR SYMBOL (PAINT)  
 DURABLE LETTER OR SYMBOL (THERMOPLASTIC)

STA 193+88 RT (2) "STOP", (2) "ONLY"  
 STA 203+90 RT "STOP"  
 STA 205+19 RT "SIGNAL"  
 STA 205+51 RT "AHEAD"  
 STA 207+15 RT "STOP"  
 STA 208+15 LT "STOP"  
 STA 208+81 RT "ONLY"

STA 193+88 RT (2) "STOP", (2) "ONLY"  
 STA 203+90 RT "STOP"  
 STA 205+19 RT "SIGNAL"  
 STA 205+51 RT "AHEAD"  
 STA 207+15 RT "STOP"  
 STA 207+75 LT "STOP"  
 STA 208+15 LT "STOP"  
 STA 208+81 RT "ONLY"

TEMPORARY 24in STOP BAR (PAINT)  
 DURABLE 24in STOP BAR (THERMOPLASTIC)

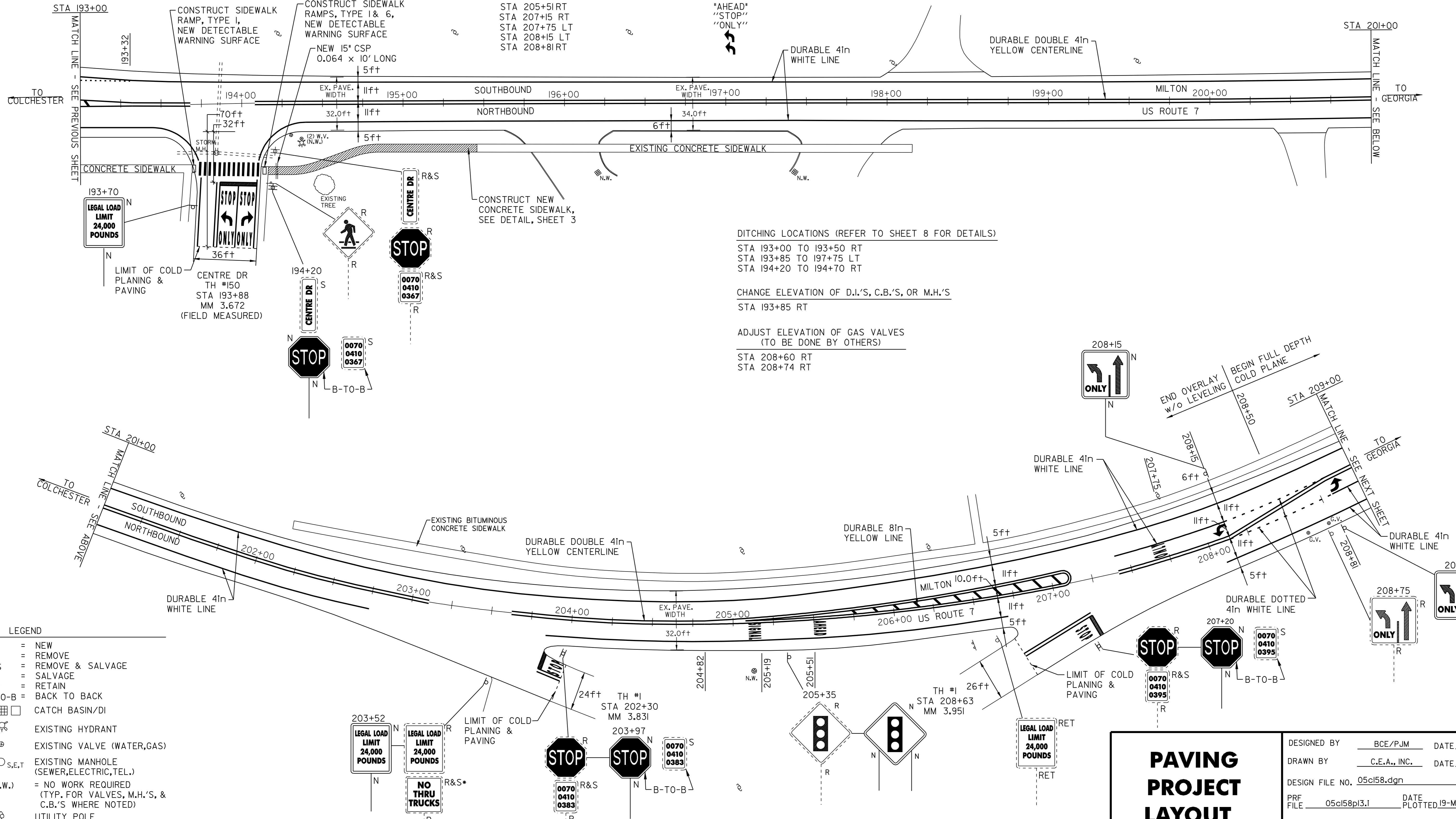
STA 193+88 RT TH #150  
 STA 203+90 RT TH #1  
 STA 207+15 RT TH #1

TEMPORARY CROSSWALK (PAINT)  
 DURABLE CROSSWALK (TYPE 1 TAPE)  
 (REFER TO DETAIL ON SHEET 43)  
 STA 193+70 TO 194+15 RT TH #150

REMOVING SIGNS  
 12

DURABLE 8in YELLOW LINE (THERMOPLASTIC)

STA 193+00 TO 193+32 PAINTED ISLAND  
 STA 204+82 TO 207+13 PAINTED ISLAND



DITCHING LOCATIONS (REFER TO SHEET 8 FOR DETAILS)  
 STA 193+00 TO 193+50 RT  
 STA 193+85 TO 197+75 LT  
 STA 194+20 TO 194+70 RT

CHANGE ELEVATION OF D.I.'S, C.B.'S, OR M.H.'S  
 STA 193+85 RT

ADJUST ELEVATION OF GAS VALVES  
 (TO BE DONE BY OTHERS)  
 STA 208+60 RT  
 STA 208+74 RT

**LEGEND**

N	= NEW
R	= REMOVE
R&S	= REMOVE & SALVAGE
S	= SALVAGE
RET	= RETAIN
B-TO-B	= BACK TO BACK
⊕	CATCH BASIN/DI
⊕	EXISTING HYDRANT
⊕	EXISTING VALVE (WATER,GAS)
⊕ S.E.T	EXISTING MANHOLE (SEWER,ELECTRIC,TEL.)
(N.W.)	= NO WORK REQUIRED (TYP. FOR VALVES, M.H.'S, & C.B.'S WHERE NOTED)
⊕	UTILITY POLE
---	DRIVE

\* CONTRACTOR SHALL DELIVER "NO THRU TRUCKS" SIGN TO THE TOWN OF MILTON

## PAVING PROJECT LAYOUT SHEET #13

DESIGNED BY	BCE/PJM	DATE	8-06
DRAWN BY	C.E.A., INC.	DATE	8-06
DESIGN FILE NO.	05c158.dgn		
PRF FILE	05c158pl3.i	DATE PLOTTED	19-MAY-2009 12
PROJ. NAME	MILTON - GEORGIA		
PROJ. NO.	STP 2510(1)S		
SHEET	21	OF	44 SHEETS