

ADJUST ELEVATION OF VALVE BOX  
 STA 184+40 RT  
 STA 190+85 LT - 4

REMOVAL AND DISPOSAL OF GUARD RAIL  
 STA 181+54 TO 184+79 LT

ADJUST ELEVATION OF GAS VALVES  
 (TO BE DONE BY OTHERS)  
 STA 184+10 RT

ANCHOR FOR STEEL BEAM RAIL  
 STA 181+54 LT  
 STA 184+79 LT

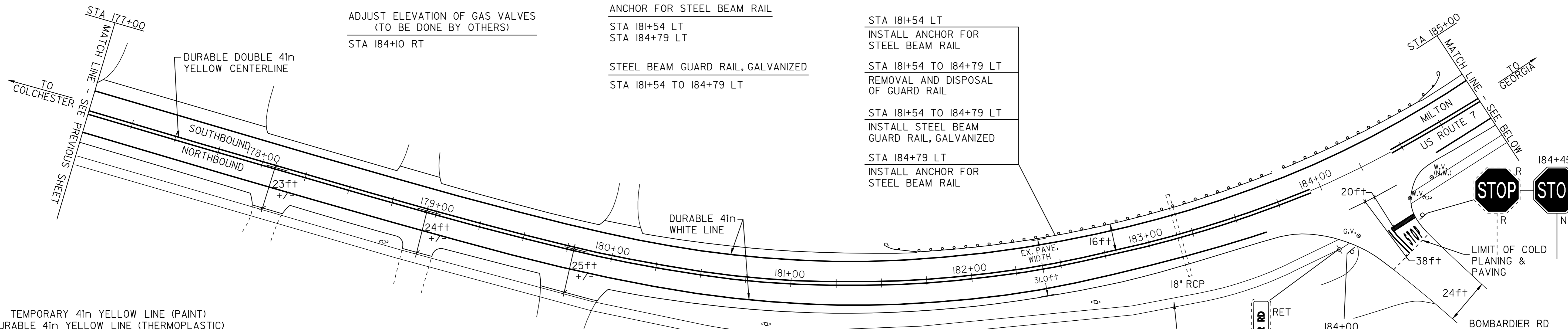
STEEL BEAM GUARD RAIL, GALVANIZED  
 STA 181+54 TO 184+79 LT

STA 181+54 LT  
 INSTALL ANCHOR FOR  
 STEEL BEAM RAIL

STA 181+54 TO 184+79 LT  
 REMOVAL AND DISPOSAL  
 OF GUARD RAIL

STA 181+54 TO 184+79 LT  
 INSTALL STEEL BEAM  
 GUARD RAIL, GALVANIZED

STA 184+79 LT  
 INSTALL ANCHOR FOR  
 STEEL BEAM RAIL



TEMPORARY 4in YELLOW LINE (PAINT)  
 DURABLE 4in YELLOW LINE (THERMOPLASTIC)

STA 177+00 TO 185+00	SOLID LT&RT
STA 184+27	DOUBLE SOLID RT
STA 185+00 TO 186+73	DOUBLE SOLID LT&RT
STA 186+73 TO 191+46	SOLID LT&RT
STA 190+49	DOUBLE SOLID LT
STA 191+46 TO 193+00	DOUBLE SOLID LT&RT

(WITH CENTERLINE BREAKS FOR TOWN HIGHWAYS)

TEMPORARY 4in WHITE LINE (PAINT)  
 DURABLE 4in WHITE LINE (THERMOPLASTIC)

STA 177+00 TO 193+00	SOLID LT&RT
STA 186+05 TO 187+85	DOTTED RT
STA 187+85 TO 189+75	SOLID RT
STA 190+72 TO 191+46	DOUBLE SOLID LT
STA 191+46 TO 192+35	DOTTED LT
STA 192+35 TO 193+00	DOTTED LT

(WITH EDGELINE BREAKS FOR TOWN HIGHWAYS)

DURABLE 8in YELLOW LINE (THERMOPLASTIC)

STA 185+00 TO 186+73	PAINTED ISLAND
STA 191+46 TO 193+00	PAINTED ISLAND

TEMPORARY LETTER OR SYMBOL (PAINT)

STA 184+27 RT	"STOP"
STA 188+45 RT	"STOP"
STA 189+67 RT	"STOP"
STA 190+30 LT	"STOP"
STA 190+80 LT	"STOP"
STA 191+46 RT	"STOP"
STA 191+85 LT	"STOP"

DURABLE LETTER OR SYMBOL (THERMOPLASTIC)

STA 184+27 RT	"STOP"
STA 187+85 RT	"ONLY"
STA 188+45 RT	"ONLY"
STA 189+07 RT	"ONLY"
STA 189+67 RT	"ONLY"
STA 190+30 LT	"ONLY"
STA 190+80 LT	"ONLY"
STA 191+06 RT	"ONLY"
STA 191+30 LT	"ONLY"
STA 191+46 RT	"ONLY"
STA 191+85 LT	"ONLY"
STA 192+35 LT	"ONLY"

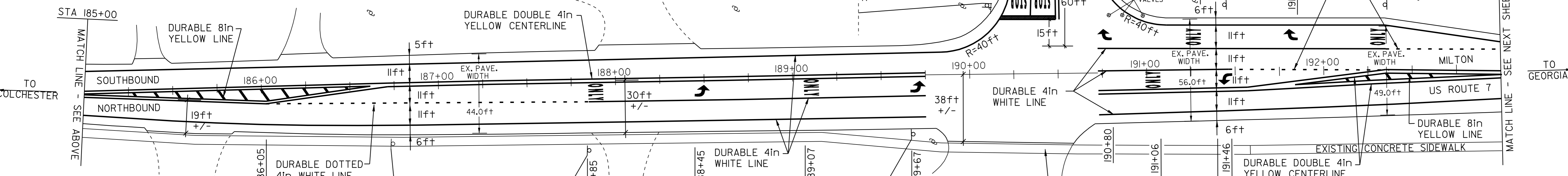
TEMPORARY 24in STOP BAR (PAINT)  
 DURABLE 24in STOP BAR (THERMOPLASTIC)

STA 184+23 RT	TH#49
STA 190+49 LT	TH#140

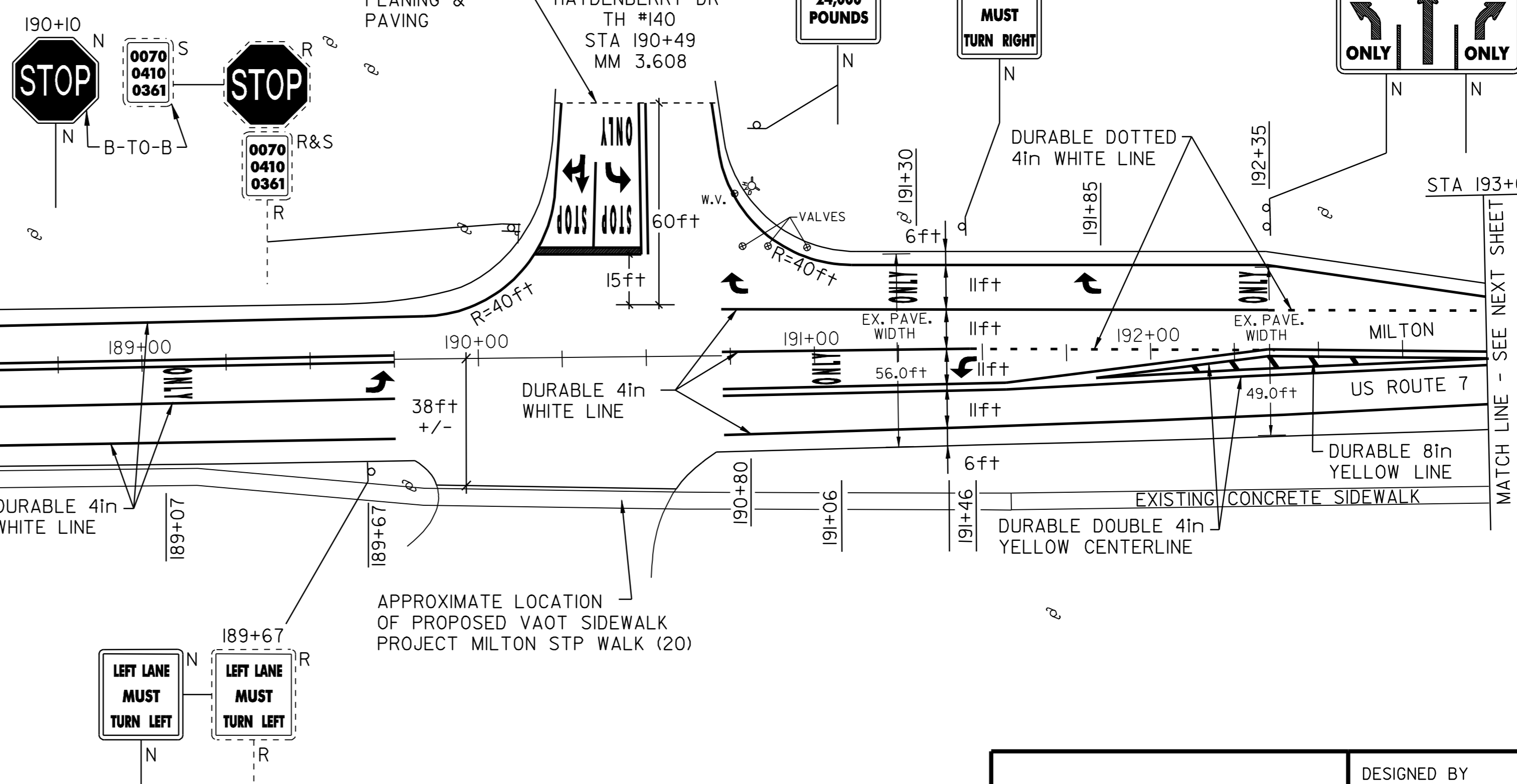
DITCHING LOCATIONS (REFER TO SHEET 8 FOR DETAILS)  
 STA 190+80 TO 193+00 RT

REMOVING SIGNS  
 6

APPROXIMATE LOCATION  
 OF PROPOSED VAOT SIDEWALK  
 PROJECT MILTON STP WALK (20)



- LEGEND
- N = NEW
  - R = REMOVE
  - R&S = REMOVE & SALVAGE
  - S = SALVAGE
  - RET = RETAIN
  - B-T-O-B = BACK TO BACK
  - ⊕ ⊞ ⊠ ⊡ = CATCH BASIN/DI
  - ⊗ = EXISTING HYDRANT
  - ⊙ = EXISTING VALVE (WATER,GAS)
  - ⊙ S,E,T = EXISTING MANHOLE (SEWER,ELECTRIC,TEL.)
  - (N.W.) = NO WORK REQUIRED (TYP. FOR VALVES, M.H.'S, & C.B.'S WHERE NOTED)
  - ⊕ = UTILITY POLE
  - = DRIVE



## PAVING PROJECT LAYOUT SHEET #12

DESIGNED BY	BCE/PJM	DATE	8-06
DRAWN BY	C.E.A., INC.	DATE	8-06
DESIGN FILE NO.	05cl58.dgn		
PRF FILE	05cl58pl2.i	DATE PLOTTED	19-MAY-2009 12
PROJ. NAME	MILTON - GEORGIA		
PROJ. NO.	STP 2510(1)S		
SHEET	20	OF	44 SHEETS