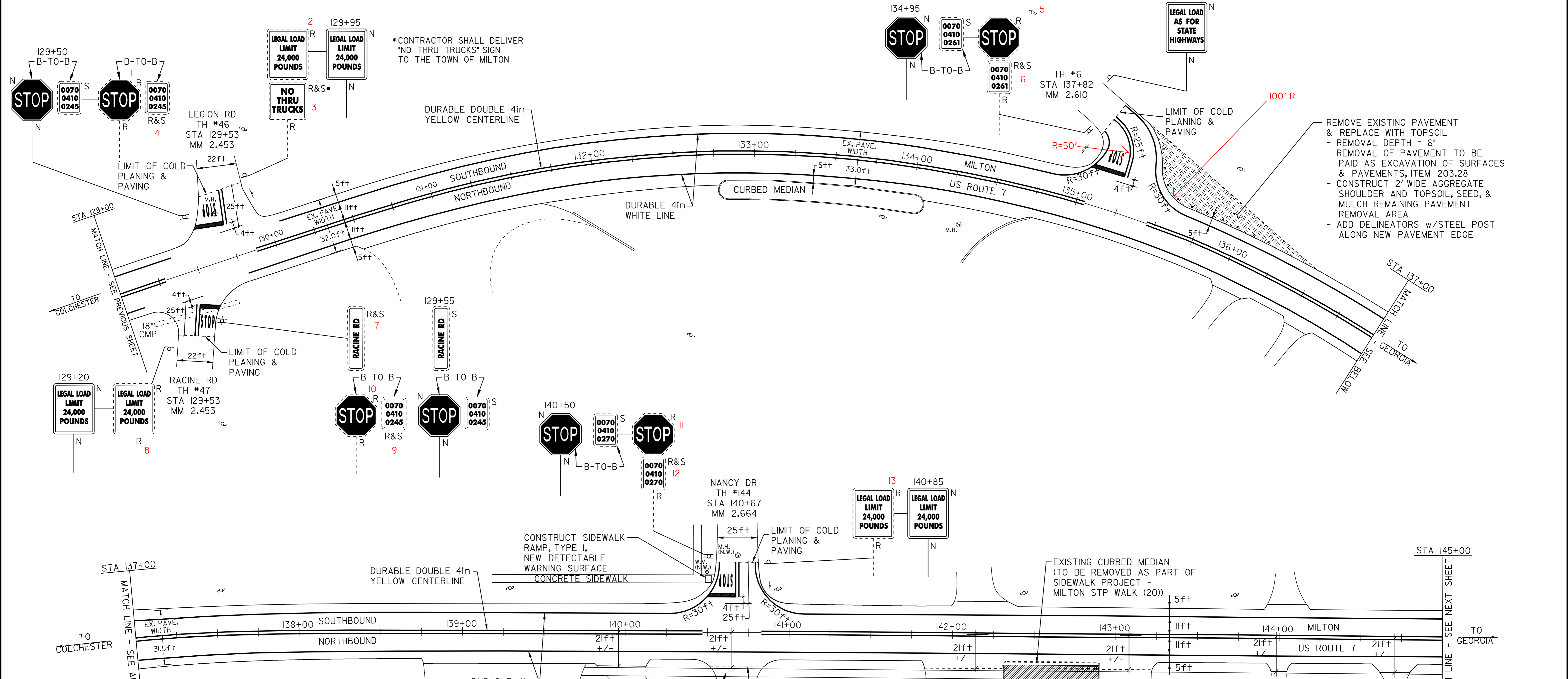


TEMPORARY 4in YELLOW LINE (PAINT) DURABLE 4in YELLOW LINE (THERMOPLASTIC)	TEMPORARY 4in WHITE LINE (PAINT) DURABLE 4in WHITE LINE (THERMOPLASTIC)	TEMPORARY LETTER OR SYMBOL (PAINT) DURABLE LETTER OR SYMBOL (THERMOPLASTIC)	TEMPORARY 24in STOP BAR (PAINT) DURABLE 24in STOP BAR (THERMOPLASTIC)	REMOVING SIGNS	CHANGE ELEVATION OF SEWER MANHOLE
--	--	--	--	----------------	-----------------------------------

STA 129+00 TO 145+00 SOLID LT&RT STA 129+53 DOUBLE SOLID LT STA 129+53 DOUBLE SOLID RT STA 135+25 DOUBLE SOLID LT STA 140+67 DOUBLE SOLID RT (WITH CENTERLINE BREAKS FOR TOWN HIGHWAYS)	STA 129+00 TO 145+00 SOLID LT&RT (WITH EDGELINE BREAKS FOR TOWN HIGHWAYS)	STA 129+53 LT STA 129+53 RT STA 135+25 LT STA 140+67 LT	TH#46 TH#47 TH#6 TH#144	13	STA 129+68 LT DITCHING LOCATIONS (REFER TO SHEET 8 FOR DETAILS) STA 129+00 TO 129+10 RT STA 129+60 TO 130+50 RT
---	---	--	----------------------------------	----	--



REMOVE EXISTING PAVEMENT & REPLACE WITH TOPSOIL
 - REMOVAL DEPTH = 6"
 - REMOVAL OF PAVEMENT TO BE PAID AS EXCAVATION OF SURFACES & PAVEMENTS, ITEM 203.28
 - CONSTRUCT 2' WIDE AGGREGATE SHOULDER AND TOPSOIL, SEED, & MULCH REMAINING PAVEMENT REMOVAL AREA
 - ADD DELINEATORS w/STEEL POST ALONG NEW PAVEMENT EDGE

- LEGEND**
- N = NEW
 - R = REMOVE
 - R&S = REMOVE & SALVAGE
 - S = SALVAGE
 - RET = RETAIN
 - B-T-O-B = BACK TO BACK
 - ☐ = CATCH BASIN/DI
 - ⊗ = EXISTING HYDRANT
 - ⊕ = EXISTING VALVE (WATER,GAS)
 - _{S,E,T} = EXISTING MANHOLE (SEWER,ELECTRIC,TEL.)
 - (N.W.) = NO WORK REQUIRED (TYP. FOR VALVES, M.H.'S, & C.B.'S WHERE NOTED)
 - ⊗ = UTILITY POLE
 - ⌋ = DRIVE

APPROXIMATE LOCATION OF PROPOSED VAOT SIDEWALK PROJECT - MILTON STP WALK (20)

PROPOSED TYPICAL LIMIT OF CONSTRUCTION TO BE 1FOOT FROM PROPOSED SIDEWALK

PAVING PROJECT LAYOUT SHEET #9

DESIGNED BY	BCE/PJM	DATE	8-06
DRAWN BY	C.E.A., INC.	DATE	8-06
DESIGN FILE NO.	05c158.dgn		
PRF FILE	05c158p09.i	DATE PLOTTED	19-MAY-2009 12
PROJ. NAME	MILTON - GEORGIA		
PROJ. NO.	STP 2510(1)S		
SHEET	17	OF	44 SHEETS