

TEMPORARY 4in YELLOW LINE (PAINT)
 DURABLE 4in YELLOW LINE (THERMOPLASTIC)

STA 34+00 TO 50+00 SOLID LT&RT
 STA 39+55 DOUBLE SOLID LT
 STA 49+60 DOUBLE SOLID LT
 STA 49+60 DOUBLE SOLID RT
 (WITH CENTERLINE BREAKS FOR TOWN HIGHWAYS)

TEMPORARY 4in WHITE LINE (PAINT)
 DURABLE 4in WHITE LINE (THERMOPLASTIC)

STA 34+00 TO 50+00 SOLID LT&RT
 (WITH EDGE LINE BREAKS FOR TOWN HIGHWAYS)

REMOVING SIGNS
 12

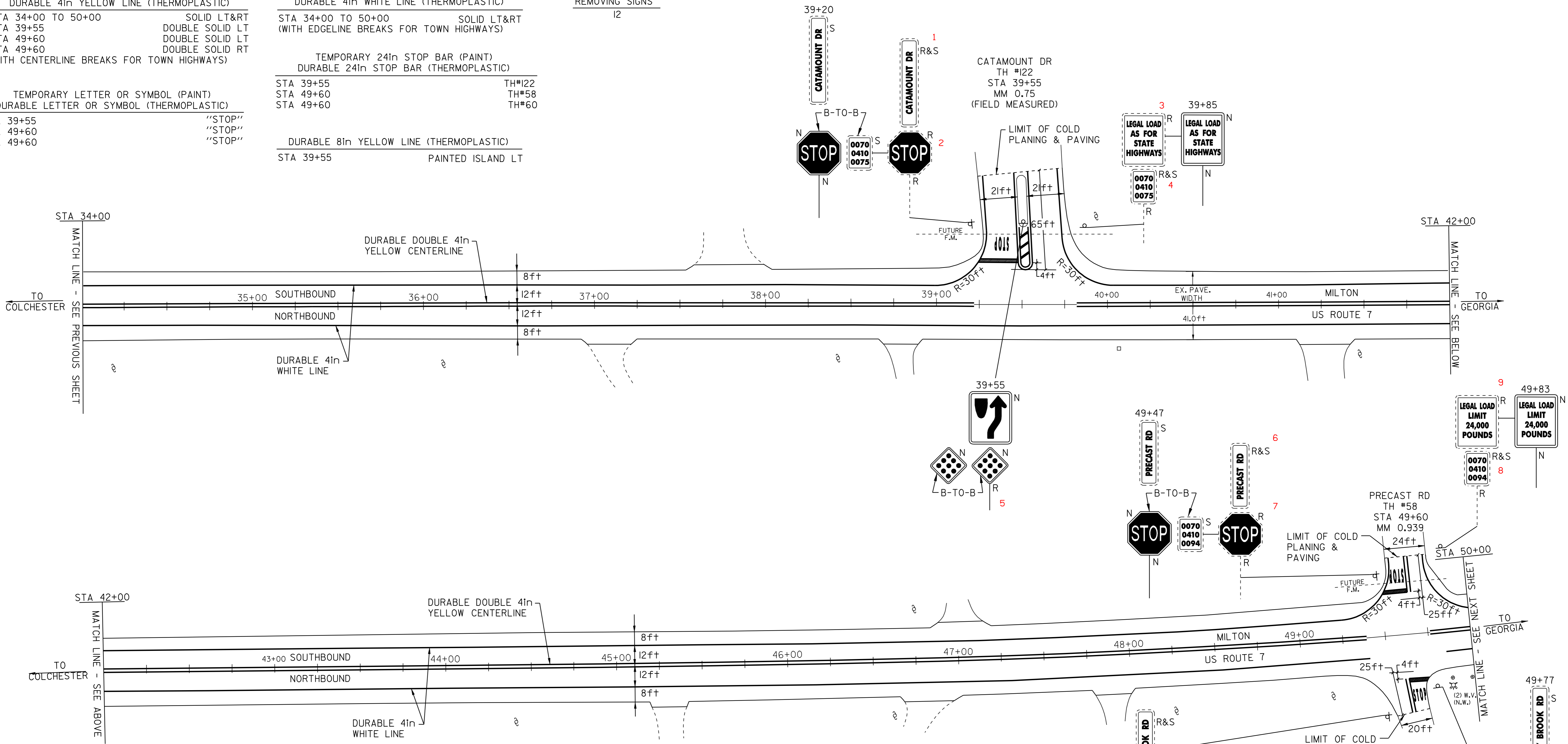
TEMPORARY 24in STOP BAR (PAINT)
 DURABLE 24in STOP BAR (THERMOPLASTIC)

STA 39+55 TH#122
 STA 49+60 TH#58
 STA 49+60 TH#60

TEMPORARY LETTER OR SYMBOL (PAINT)
 DURABLE LETTER OR SYMBOL (THERMOPLASTIC)

STA 39+55 "STOP"
 STA 49+60 "STOP"
 STA 49+60 "STOP"

DURABLE 8in YELLOW LINE (THERMOPLASTIC)
 STA 39+55 PAINTED ISLAND LT



LEGEND

N	= NEW
R	= REMOVE
R&S	= REMOVE & SALVAGE
S	= SALVAGE
RET	= RETAIN
B-TO-B	= BACK TO BACK
⊕	CATCH BASIN/DI
⊗	EXISTING HYDRANT
⊙	EXISTING VALVE (WATER,GAS)
⊙ _{S,E,T}	EXISTING MANHOLE (SEWER,ELECTRIC,TEL.)
(N.W.)	= NO WORK REQUIRED (TYP. FOR VALVES, M.H.'S, & C.B.'S WHERE NOTED)
⊕	UTILITY POLE
---	DRIVE

PAVING PROJECT LAYOUT SHEET #3

DESIGNED BY	BCE/PJM	DATE	8-06
DRAWN BY	C.E.A., INC.	DATE	8-06
DESIGN FILE NO.	05c158.dgn		
PRF FILE	05c158p03.1	DATE PLOTTED	19-MAY-2009 12
PROJ. NAME	MILTON - GEORGIA		
PROJ. NO.	STP 2510(1)S		
SHEET	11	OF	44 SHEETS