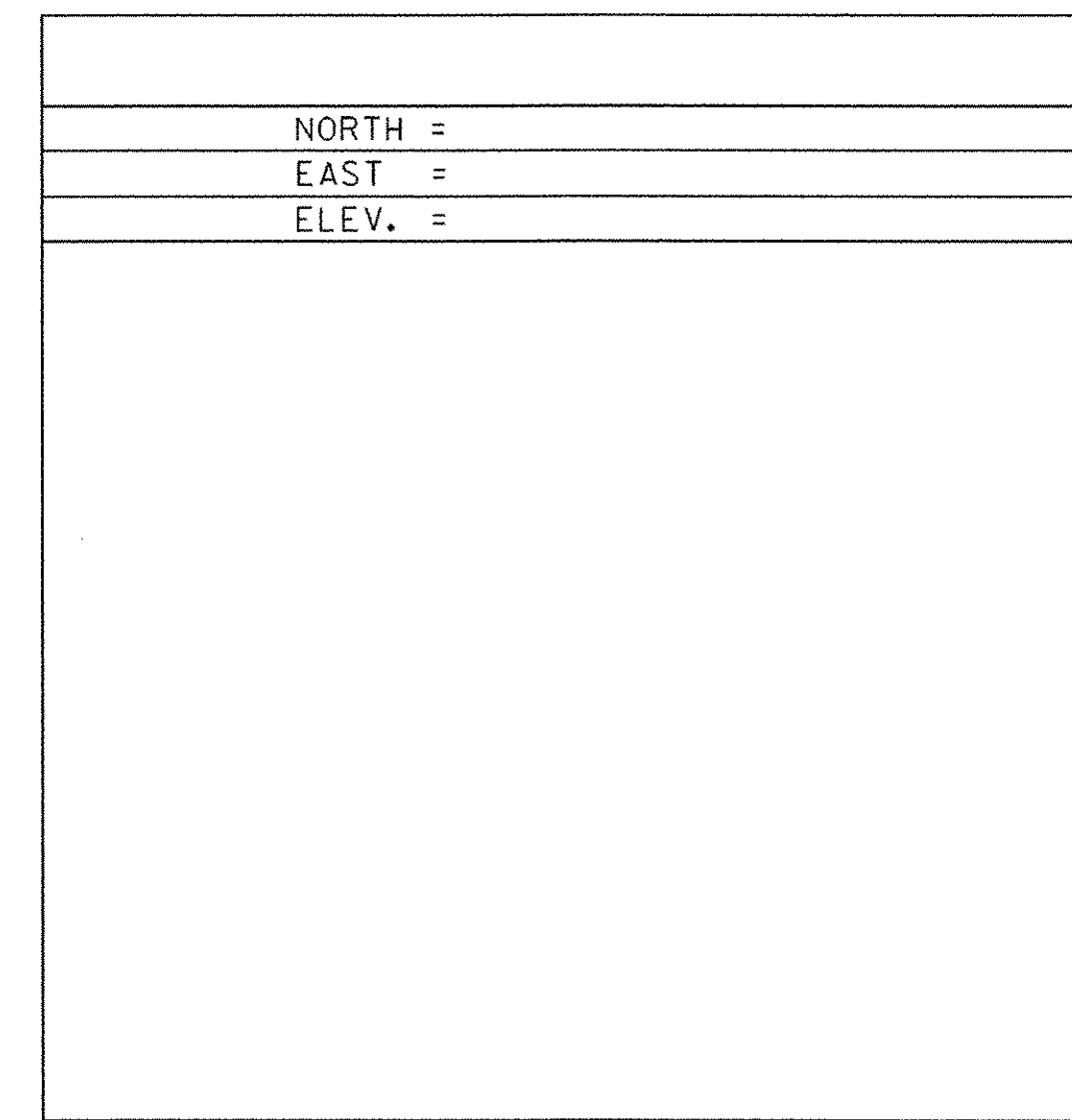
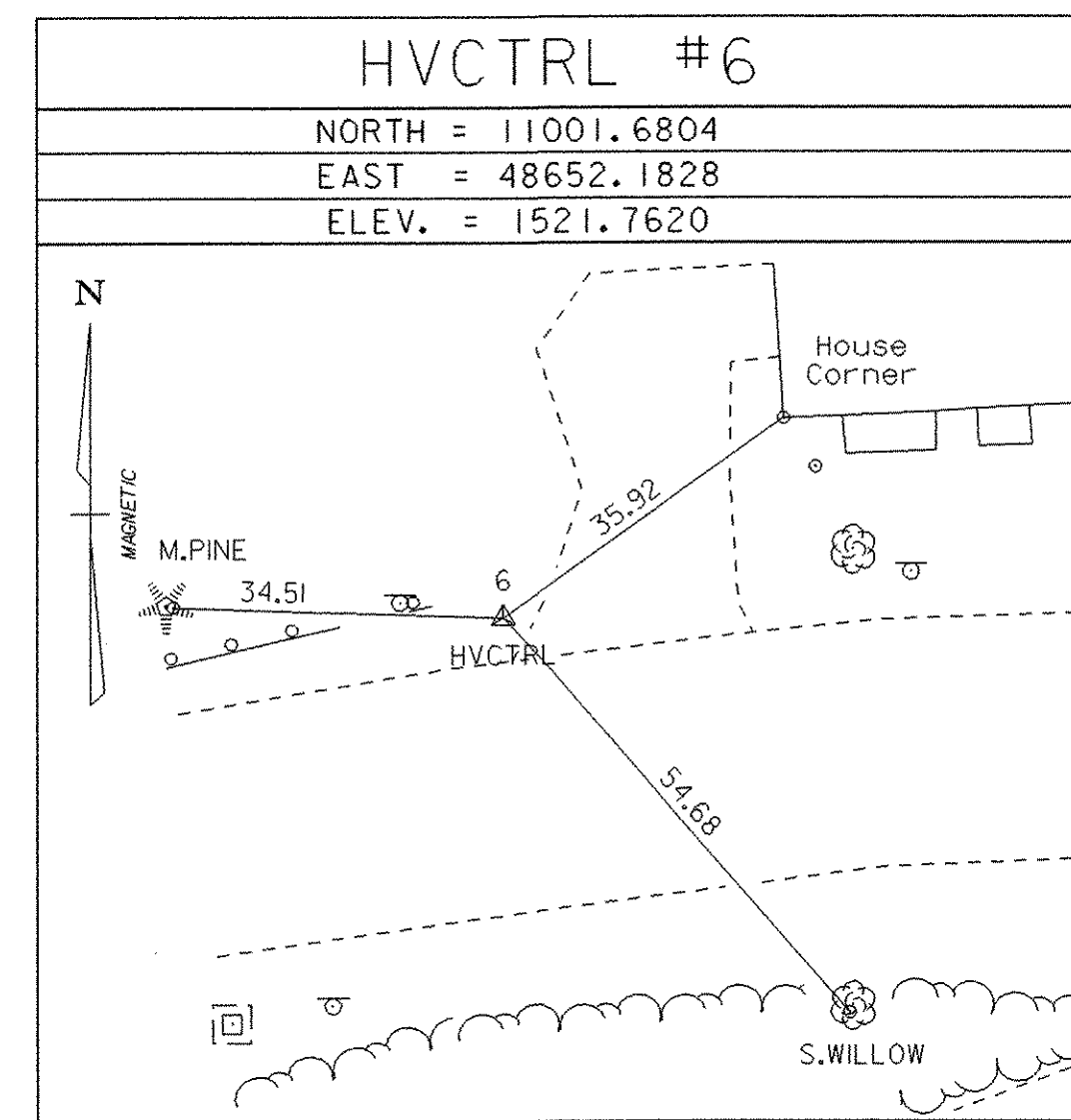
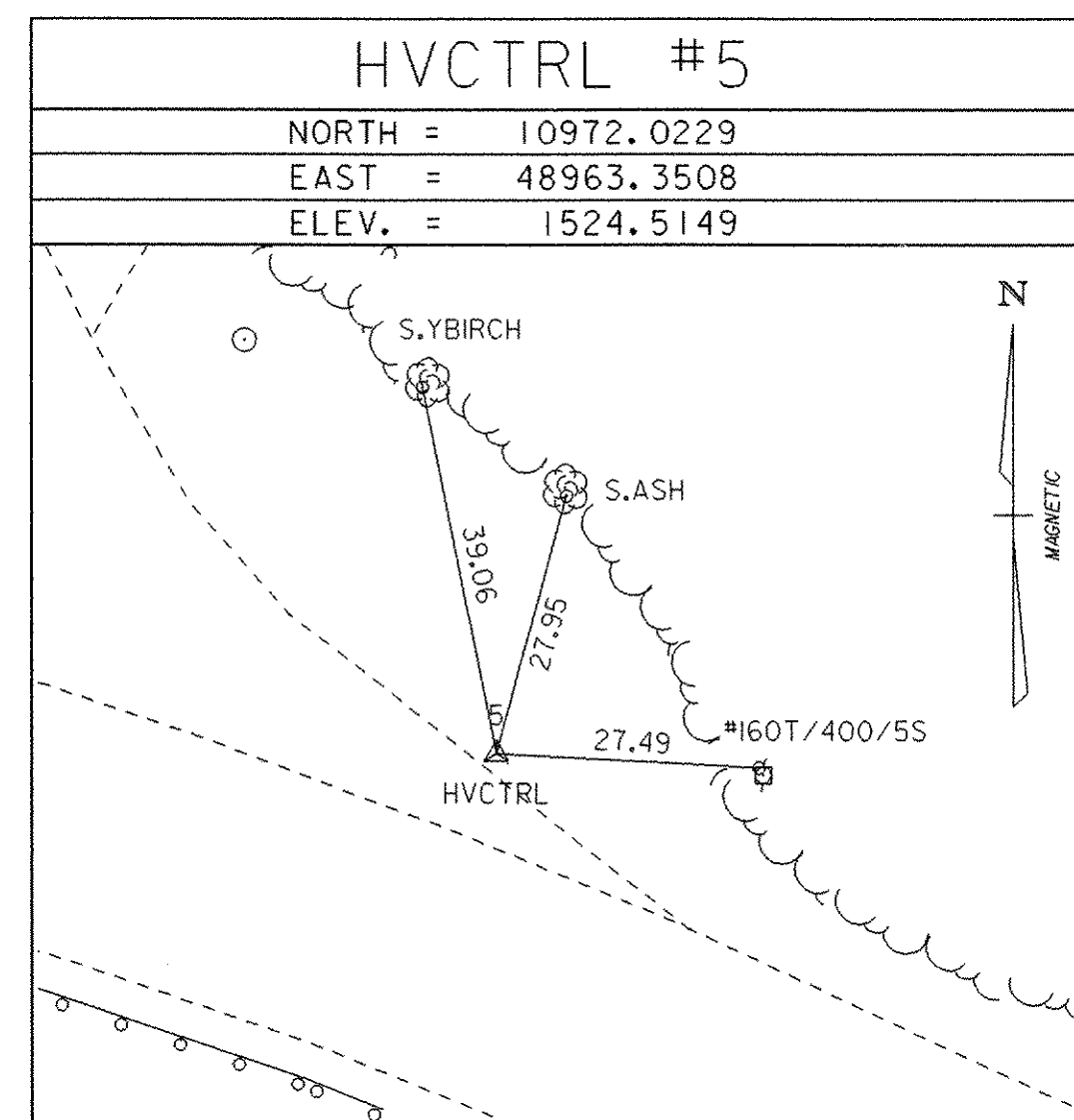
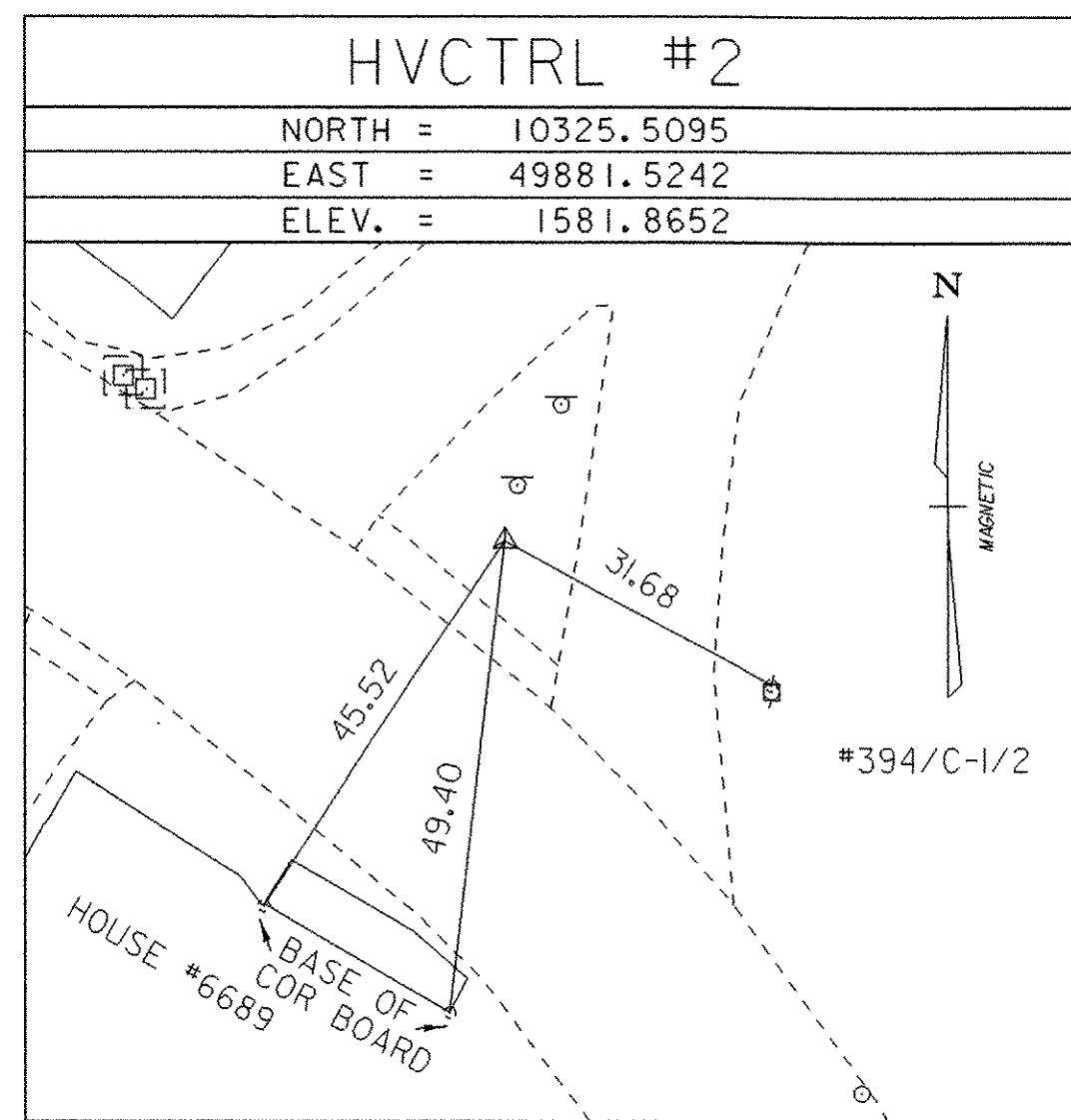
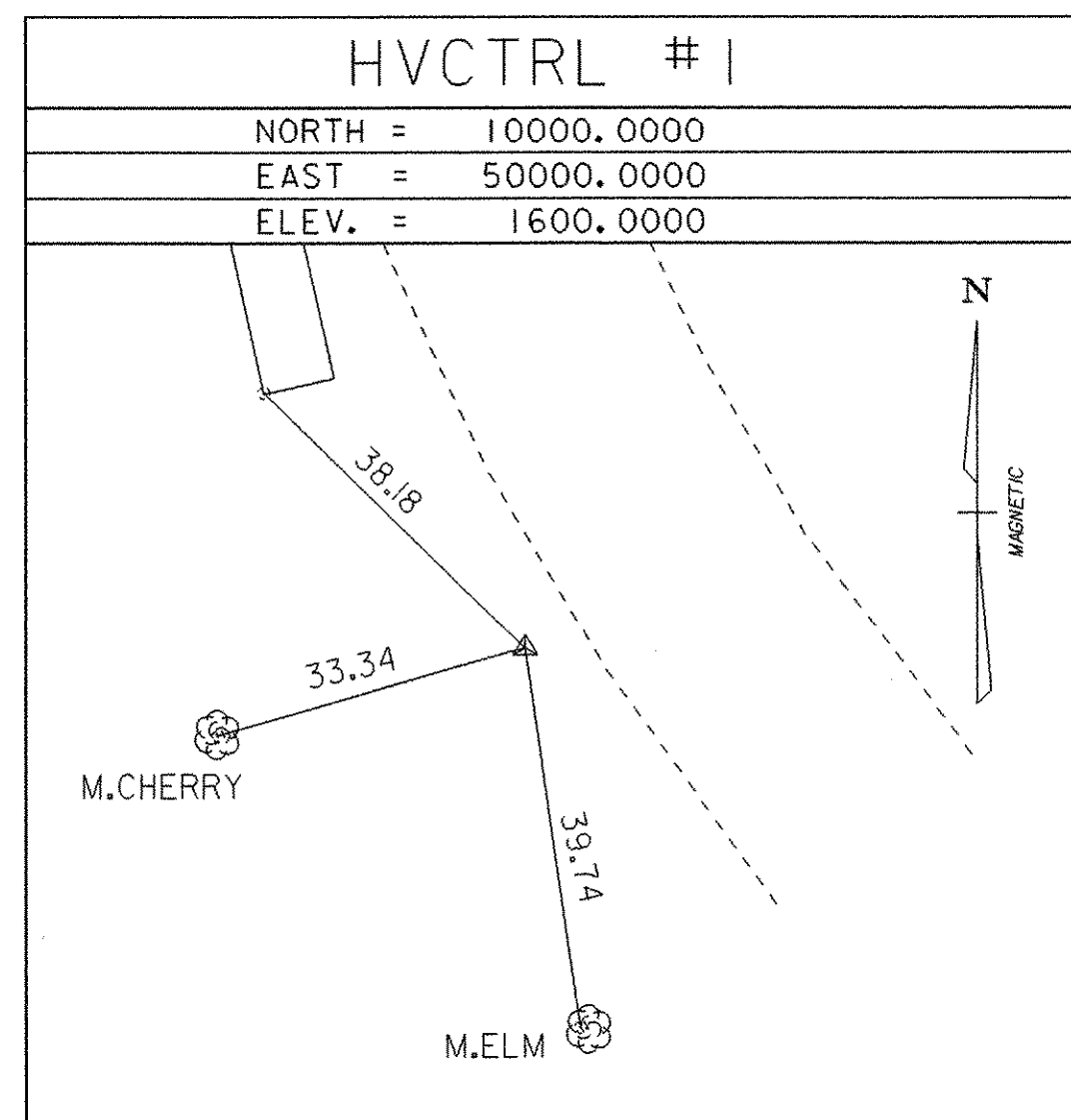


GPS CONTROL POINTS

COORDINATES ASSUMED

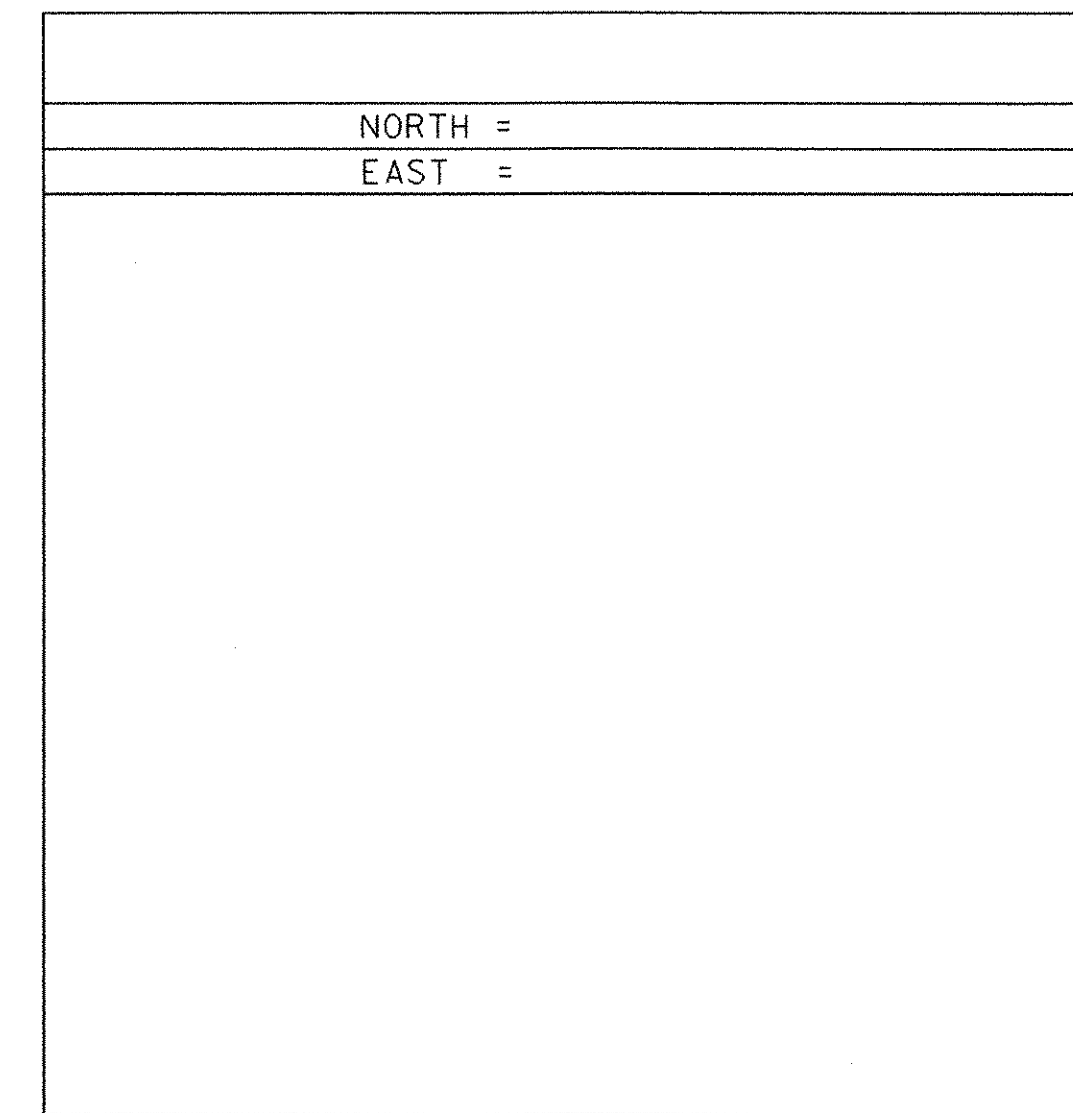
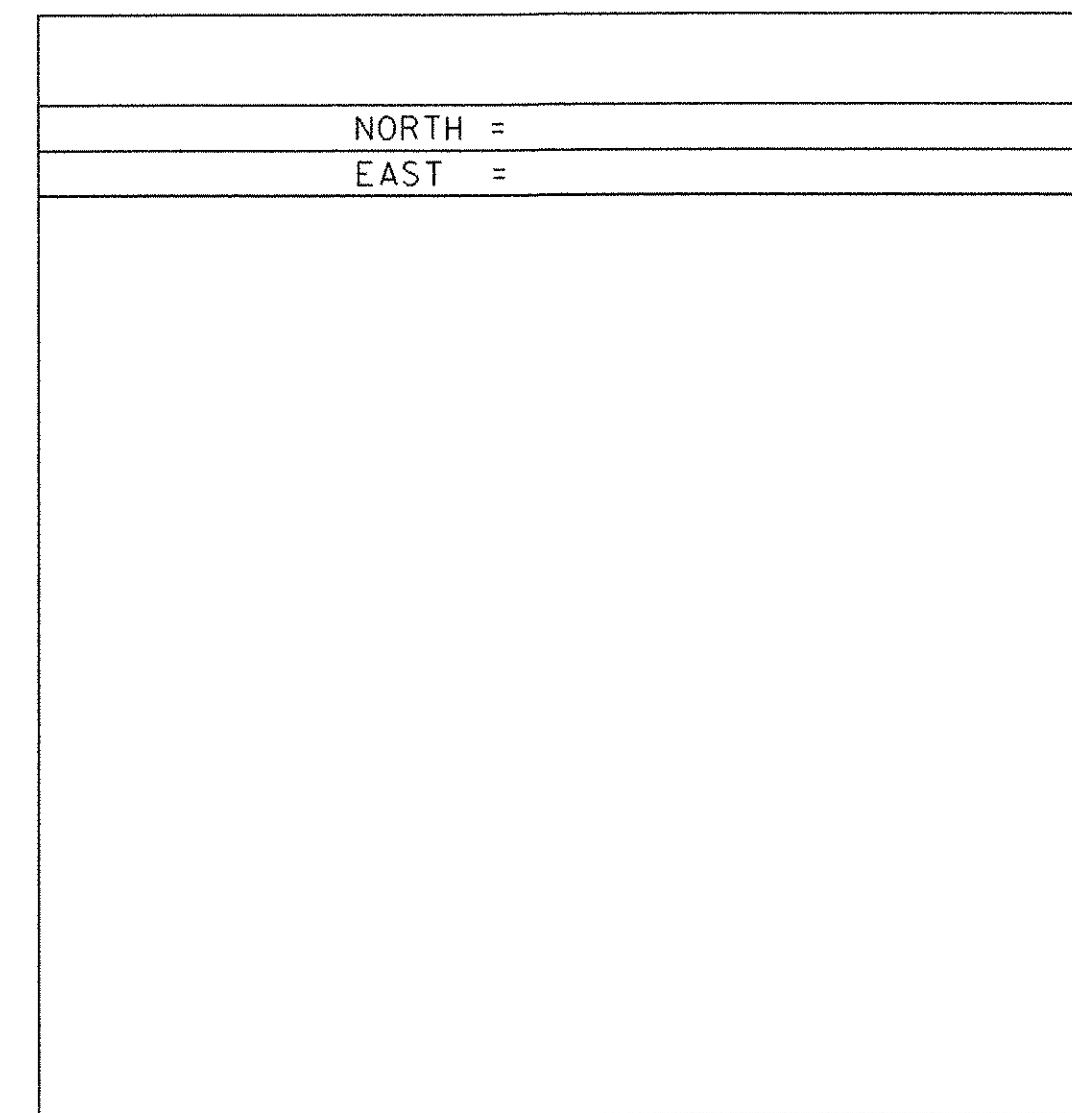
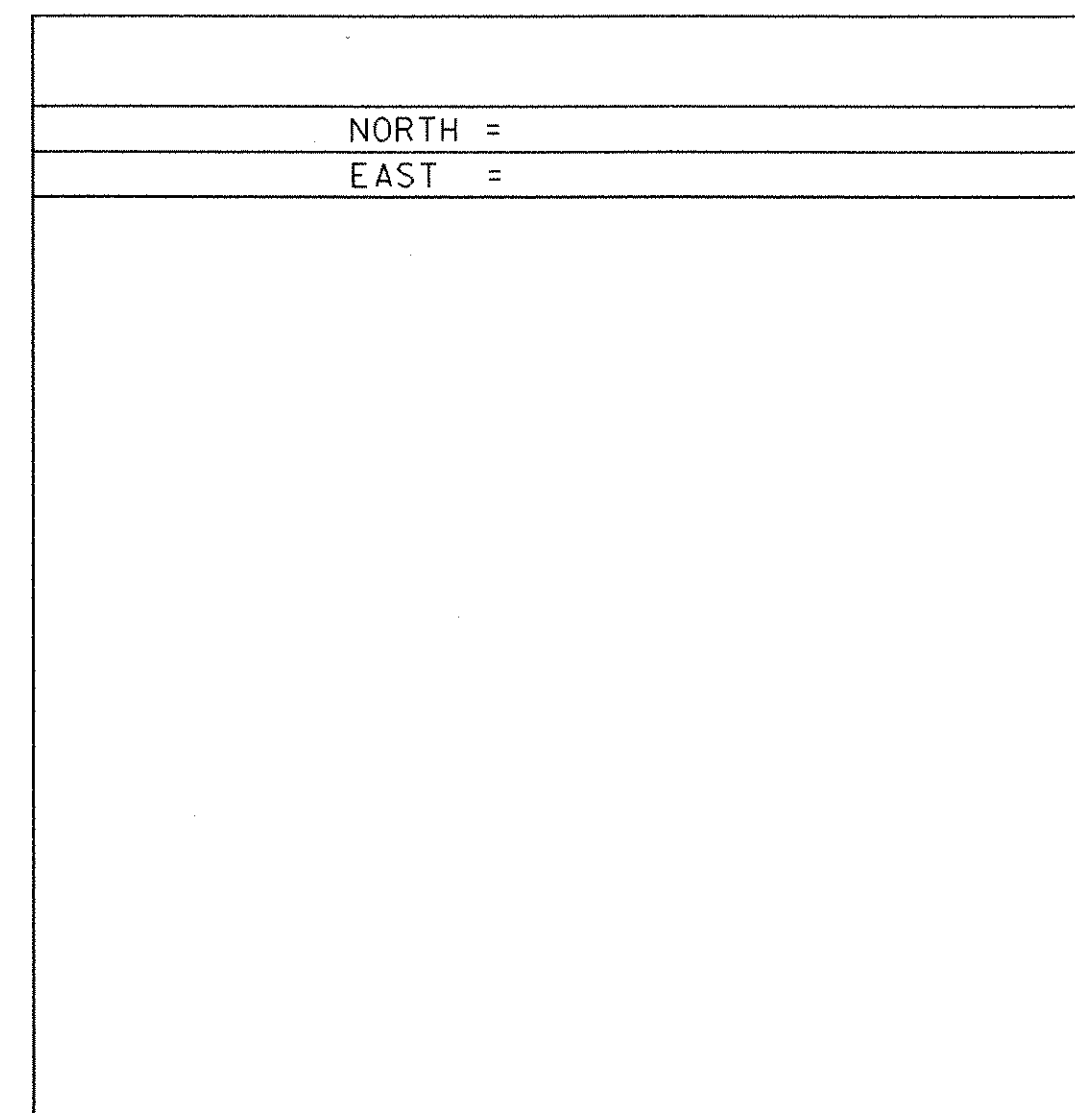
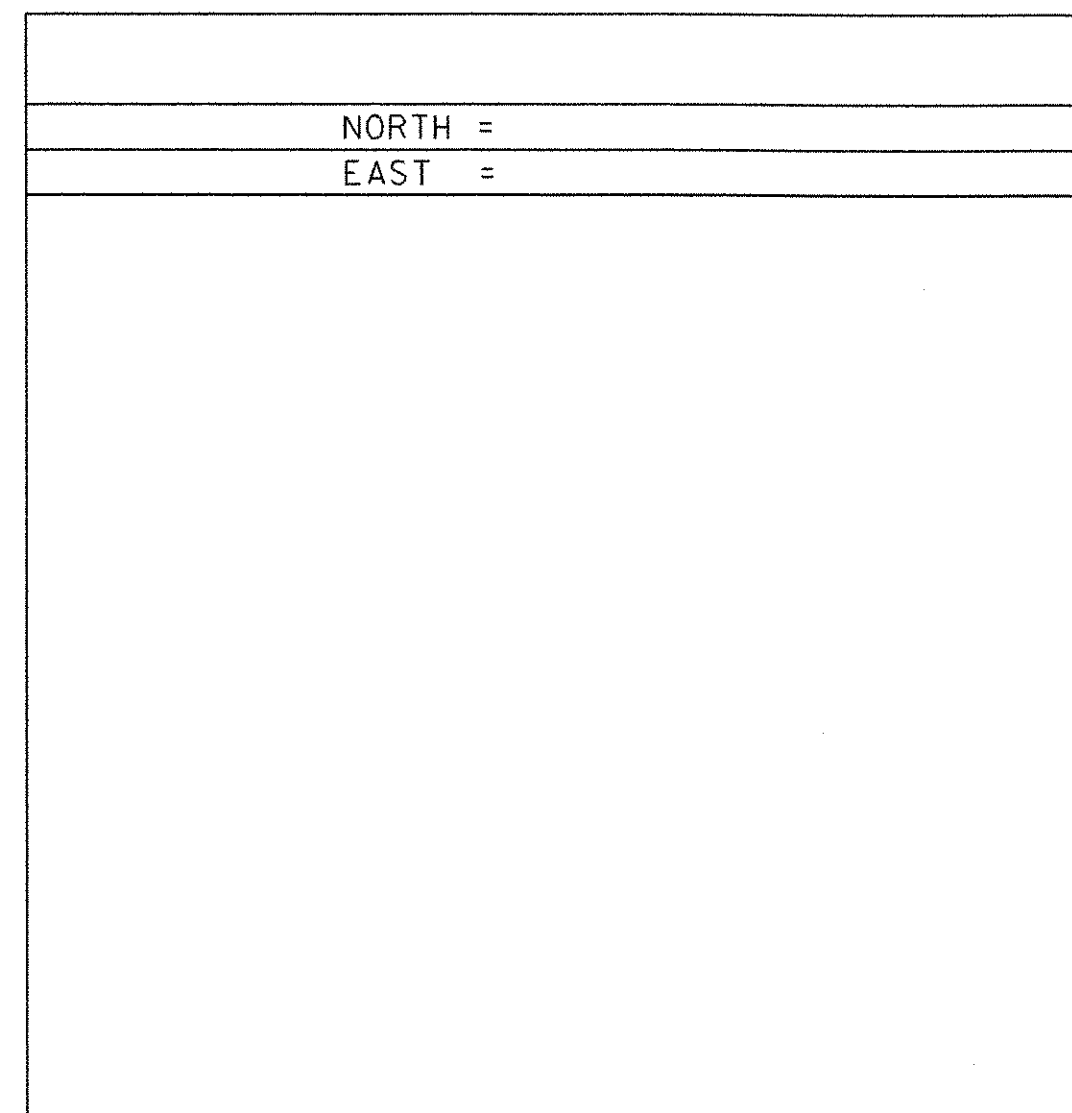
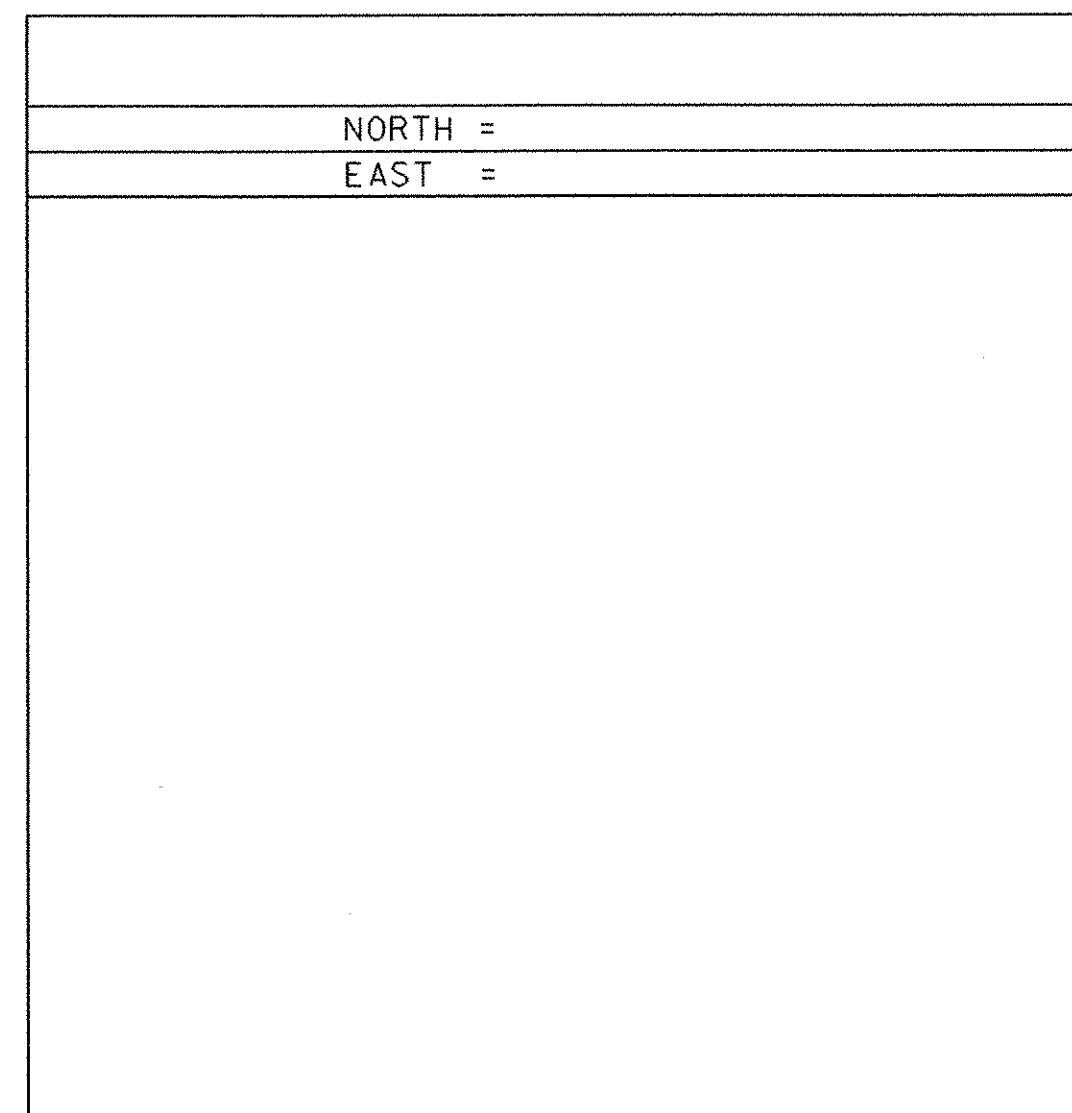
REFER TO WHITINGHAM ST CULV(3) 04CI42.RW5 FOR CONTROL INFO

TRAVERSE TIES



Traverse completed 06-03-2005 by L.ORVIS PC & J.HULETT

ALIGNMENT TIES



DATUM
 VERTICAL ASSUMED
 HORIZONTAL ASSUMED
 ADJUSTMENT NONE

PROJECT NAME: Whitingham
 PROJECT NUMBER: ST CULV (6)
 FILE NAME: 05ci28/str/s05ci28tie.dgn PLOT DATE: 08-MAR-2006
 PROJECT LEADER: C.P.WILLIAMS DRAWN BY: R.Bullock
 DESIGNED BY: E.L.RUSTAY CHECKED BY: M.GAGULIC
 TRAVERSE TIE INFORMATION SHEET 7 OF 34