

SEE SHEET 2 FOR INDEX OF SHEETS
AND LIST OF STANDARDS

STATE OF VERMONT
AGENCY OF TRANSPORTATION

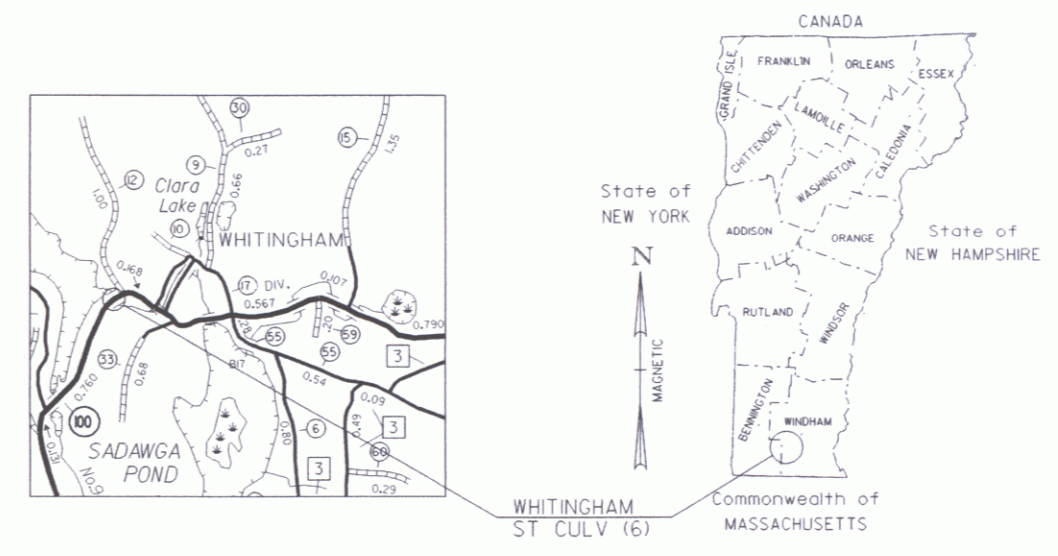


George R. Cairns and Sons Inc.
Contractor

[Signature]
Signature
Vice President
Title

David C. Dine
Secretary of Transportation
or Duly Authorized Agent
4/28/06
Date

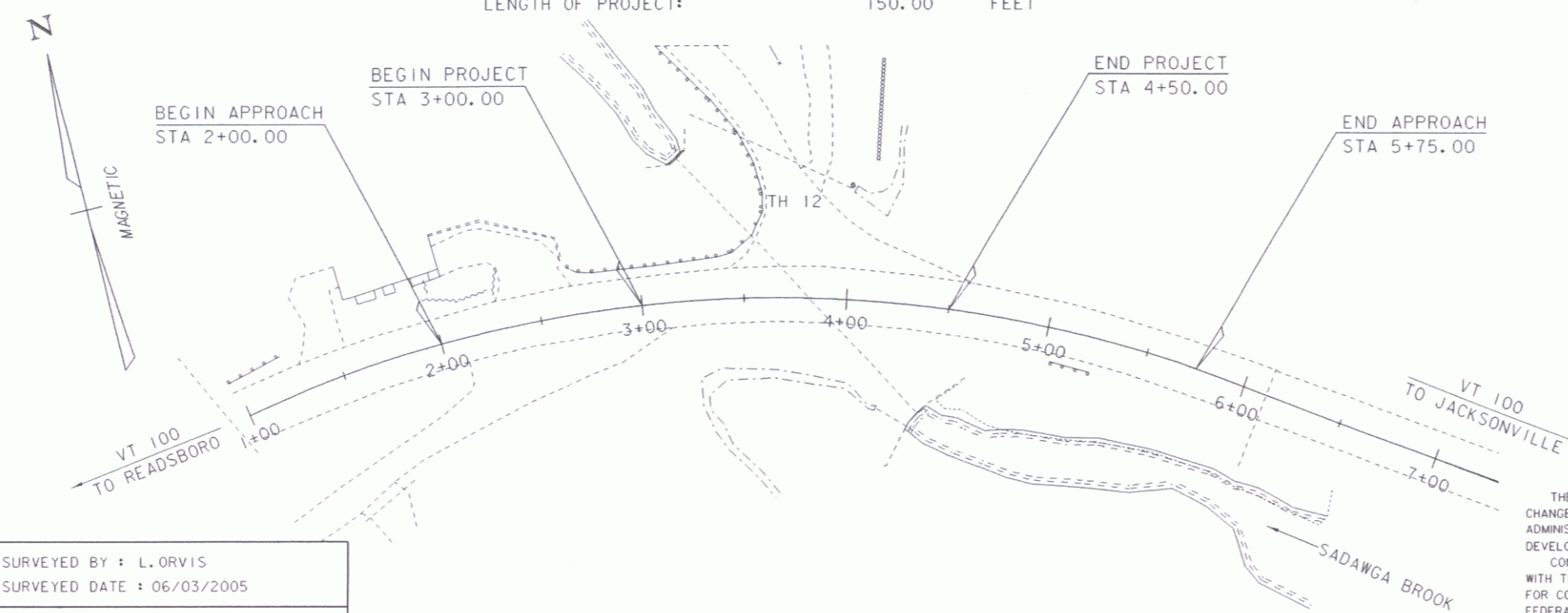
PROPOSED IMPROVEMENT
BRIDGE PROJECT
TOWN OF WHITINGHAM
COUNTY OF WINDHAM



ROUTE NO. : VT RTE 100, RURAL MAJOR COLLECTOR BRIDGE NO. : 29
PROJECT LOCATION : BEGINNING AT A POINT ON VT 100 75 FEET SOUTHWESTERLY FROM ITS INTERSECTION WITH TH 12
AND PROCEEDING EASTERLY ALONG VT RTE 100 FOR APPROXIMATELY 150 FEET.

PROJECT DESCRIPTION : CONSTRUCTION OF A NEW PRECAST CONCRETE BOX CULVERT IN THE EXISTING
LOCATION WITH RELATED CHANNEL AND APPROACH WORK.

LENGTH OF STRUCTURE: N/A FEET
LENGTH OF ROADWAY: 150.00 FEET
LENGTH OF PROJECT: 150.00 FEET



CONVENTIONAL SYMBOLS

COUNTY LINE	
TOWN LINE	
LIMITS OF ACCESS	
POINT OF ACCESS	X
FENCE LINE	
STONE WALL	
TRAVELED WAY	
GUARD RAIL	
RAILROAD	
SURVEY LINE	
CULVERT	
POWER POLE	
TELEPHONE POLE	
TREES	
CONTROL OF ACCESS	
PROPERTY LINE	
R.O.W. TAKING LINE	
SLOPE RIGHTS	
TOP OF CUT	
TOE OF SLOPE	

SURVEYED BY : L. ORVIS
SURVEYED DATE : 06/03/2005

DATUM
VERTICAL ASSUMED
HORIZONTAL ASSUMED

SCALE 1" = 40'-0"
40 0 40

THESE PLANS ARE SUBJECT TO SUCH ENGINEERING
CHANGES AS MAY BE REQUIRED BY THE FEDERAL HIGHWAY
ADMINISTRATION OR THE DIRECTOR OF PROGRAM
DEVELOPMENT.
CONSTRUCTION IS TO BE CARRIED ON IN ACCORDANCE
WITH THESE PLANS AND THE STANDARD SPECIFICATIONS
FOR CONSTRUCTION DATED 2006 AS APPROVED BY THE
FEDERAL HIGHWAY ADMINISTRATION ON JANUARY 4, 2001
FOR USE ON THIS PROJECT, INCLUDING ALL SUBSEQUENT
REVISIONS AND SUCH REVISED SPECIFICATIONS AND
SPECIAL PROVISIONS AS ARE INCORPORATED IN THESE
PLANS.

DIRECTOR OF PROGRAM DEVELOPMENT
APPROVED [Signature] DATE 2/27/06
PROJECT MANAGER : C. P. WILLIAMS

PROJECT NAME : WHITINGHAM
PROJECT NUMBER : STP ST CULV (6)

PLOTTED 27-FEB-2006 SHEET 1 OF 34 SHEETS