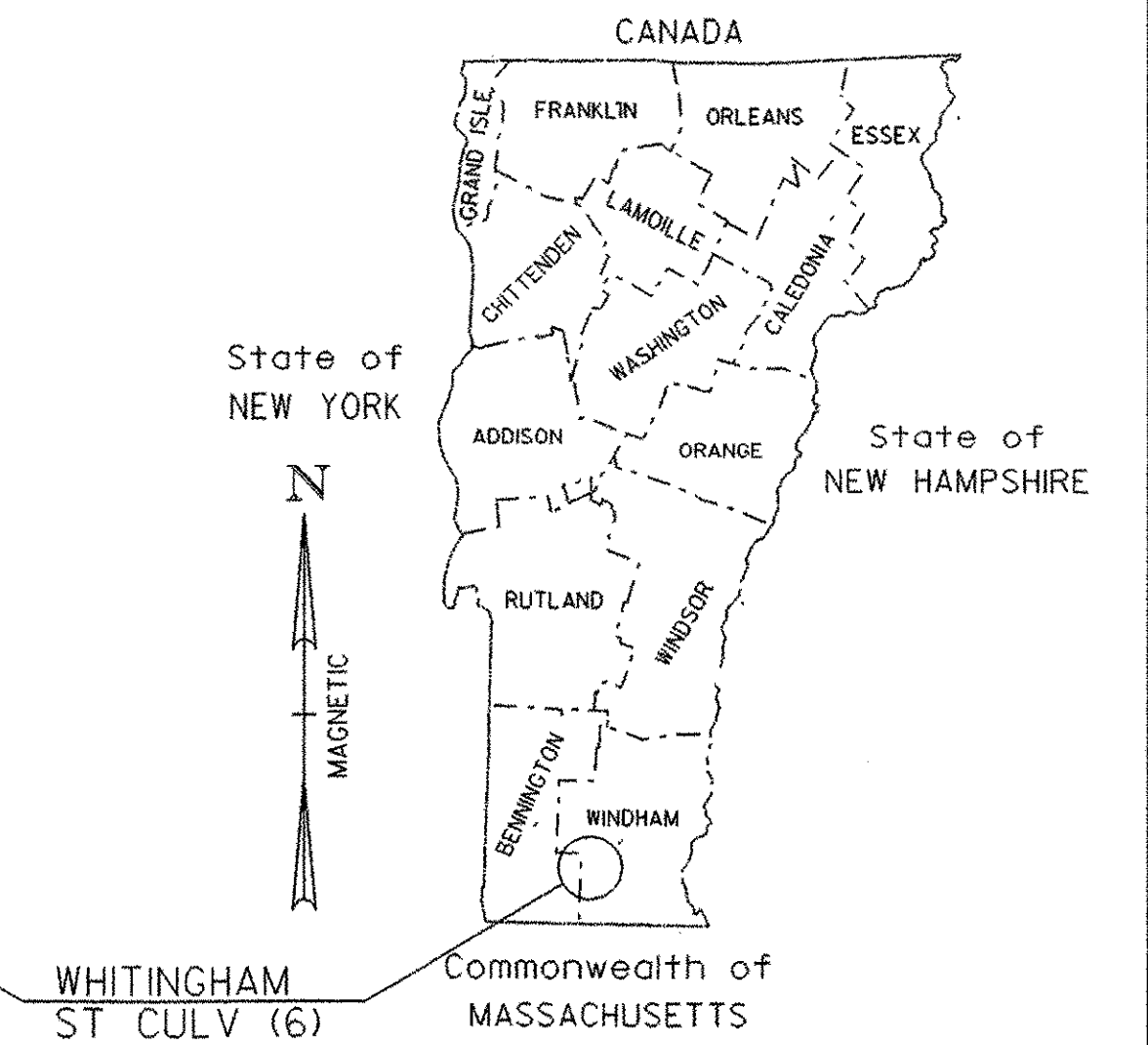
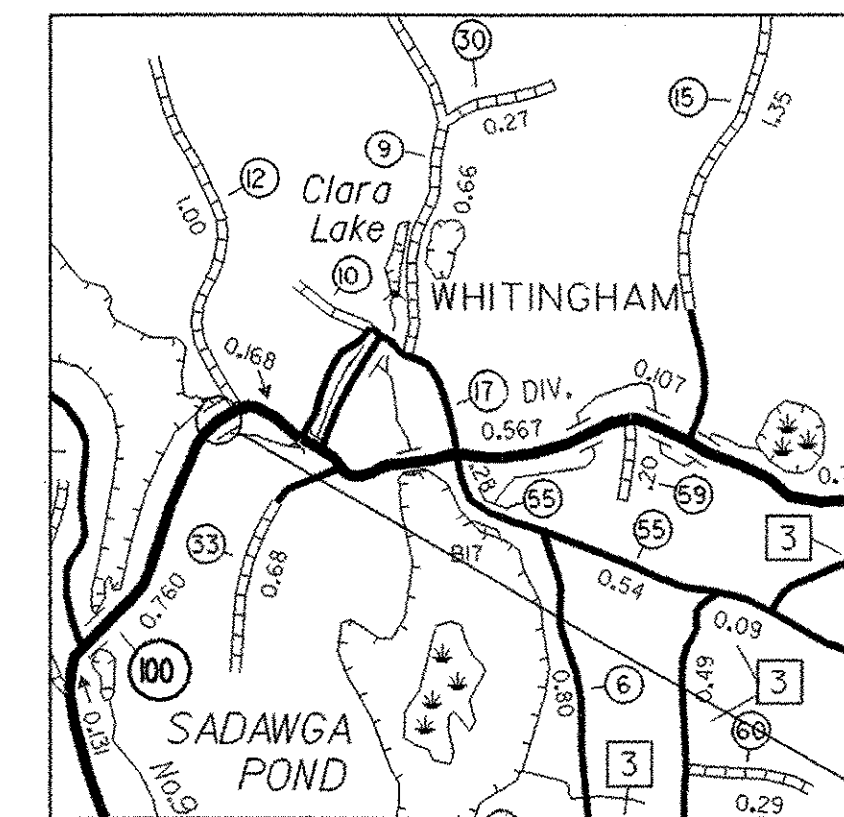


SEE SHEET 2 FOR INDEX OF SHEETS  
AND LIST OF STANDARDS

# STATE OF VERMONT AGENCY OF TRANSPORTATION



## PROPOSED IMPROVEMENT BRIDGE PROJECT TOWN OF WHITINGHAM COUNTY OF WINDHAM



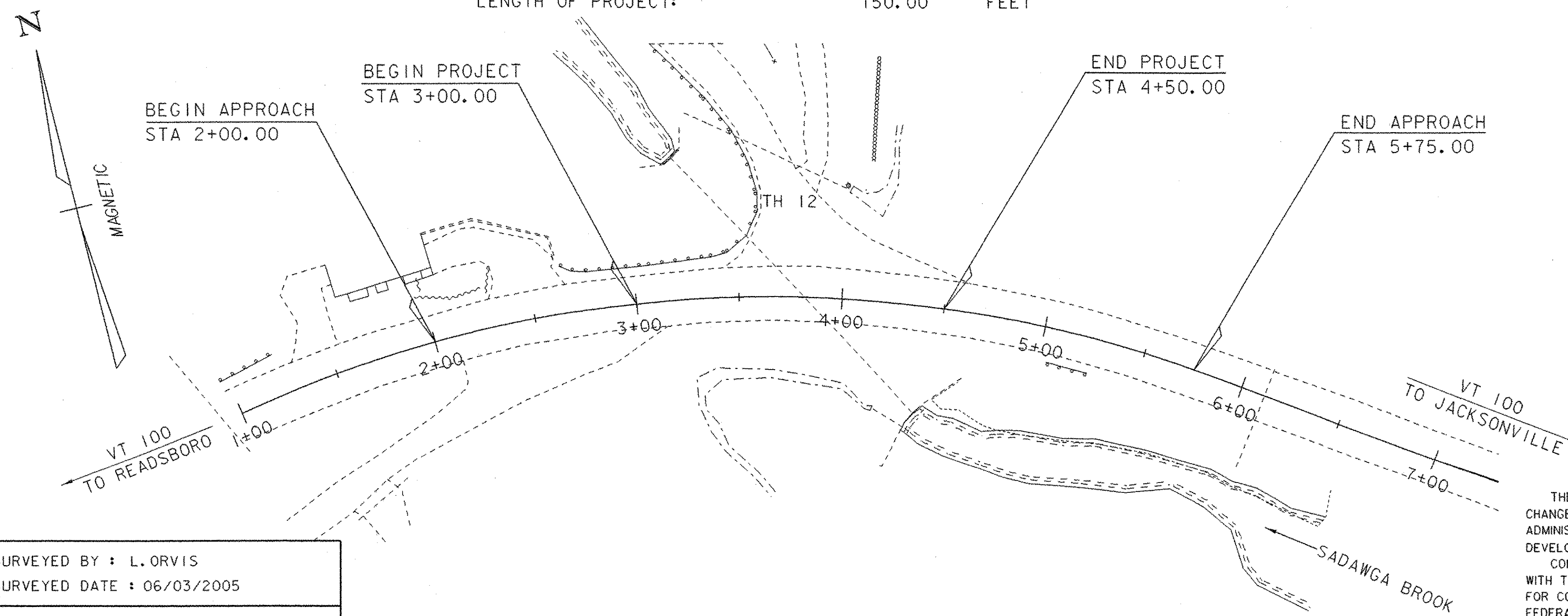
ROUTE NO. : VT RTE 100, RURAL MAJOR COLLECTOR      BRIDGE NO. : 29

PROJECT LOCATION : BEGINNING AT A POINT ON VT 100 75 FEET SOUTHWESTERLY FROM ITS INTERSECTION WITH TH 12  
AND PROCEEDING EASTERLY ALONG VT RTE 100 FOR APPROXIMATELY 150 FEET.

PROJECT DESCRIPTION : CONSTRUCTION OF A NEW PRECAST CONCRETE BOX CULVERT IN THE EXISTING  
LOCATION WITH RELATED CHANNEL AND APPROACH WORK.

LENGTH OF STRUCTURE:	N/A	FEET
LENGTH OF ROADWAY:	150.00	FEET
LENGTH OF PROJECT:	150.00	FEET

RECORD PLANS	
CONTRACTOR:	GEORGE R. CAIRNS & SON, INC. - WINDHAM, VT
RESIDENT ENGINEER:	MARK HAUGHWOUT
CONSTRUCTION BEGAN:	JUNE 12, 2006
CONSTRUCTION COMPLETE:	JULY 17, 2007
RECORD PLANS BY:	M. HAUGHWOUT & J. GILMORE
I HEREBY CERTIFY THAT ALL THE CONSTRUCTION REQUIRED BY THIS SET OF DRAWINGS HAS BEEN ACCOMPLISHED AS INDICATED HEREIN.	
BY <i>Mark W. Haughwout</i>	RESIDENT ENGINEER
DATE <i>5/22/08</i>	
NOTE: Any further information concerning final quantities, amounts or other details relative to this project may be found at Central Files in the electronic archives.	



CONVENTIONAL SYMBOLS	
COUNTY LINE	
TOWN LINE	
LIMITS OF ACCESS	
POINT OF ACCESS	
FENCE LINE	
STONE WALL	
TRAVELED WAY	
GUARD RAIL	
RAILROAD	
SURVEY LINE	
CULVERT	
POWER POLE	
TELEPHONE POLE	
TREES	
CONTROL OF ACCESS	
PROPERTY LINE	
R.O.W. TAKING LINE	
SLOPE RIGHTS	
TOP OF CUT	
TOE OF SLOPE	

SURVEYED BY : L. ORVIS  
SURVEYED DATE : 06/03/2005

DATUM  
VERTICAL      ASSUMED  
HORIZONTAL    ASSUMED

SCALE 1" = 40' - 0  
40      0      40

THESE PLANS ARE SUBJECT TO SUCH ENGINEERING CHANGES AS MAY BE REQUIRED BY THE FEDERAL HIGHWAY ADMINISTRATION OR THE DIRECTOR OF PROGRAM DEVELOPMENT.  
CONSTRUCTION IS TO BE CARRIED ON IN ACCORDANCE WITH THESE PLANS AND THE STANDARD SPECIFICATIONS FOR CONSTRUCTION DATED 2001, AS APPROVED BY THE FEDERAL HIGHWAY ADMINISTRATION ON JANUARY 4, 2001 FOR USE ON THIS PROJECT, INCLUDING ALL SUBSEQUENT REVISIONS AND SUCH REVISED SPECIFICATIONS AND SPECIAL PROVISIONS AS ARE INCORPORATED IN THESE PLANS.

DIRECTOR OF PROGRAM DEVELOPMENT	
APPROVED <i>Robert Johnson</i>	DATE <i>2/22/06</i>
PROJECT MANAGER : C.P. WILLIAMS	
PROJECT NAME :	WHITINGHAM
PROJECT NUMBER :	STP ST CULV (6)
SHEET 1 OF 34 SHEETS	

PLOTTED 27-FEB-2006