

GPS CONTROL POINTS

HVCTRL #1

STANDARD DISK STAMPED

189 Exit 10

N = 671937.318
E = 1574199.762
ELEV. = 498.851

To reach from the intersection of Vt route 100 no. and US 2, at the northwest end of Waterbury Village, go northeast along Vt. 100 for 0.4 miles, to the southeast end of the Vt 100 bridge over I-89 and the site of the mark in the top of a concrete island just south of the bridge. It is 9.8 ft northwest of and about 0.7 ft higher than the centerline of the northbound side of Vt 100. 32.5 ft northwest of the point where the island switches from pavement to concrete. 2.0 ft northwest of the southeast edge of the concrete island. 2.0 ft southeast of the northwest edge of the island, and 26.2 ft northwest of a fiberglass witness post.

HVCTRL #2

STANDARD DISK STAMPED

189 Exit 10 Az Mk

N = 671369.002
E = 1572577.137
ELEV. = 420.209

In the northeast quadrant of the intersection of Vt route 100 north and US route 2, at the northwest end of Waterbury Village. The mark is set in the top of the northeast corner of a 4 ft square concrete base for a drain. It is 28.5 ft north of and about 4 ft lower than the north edge of pavement of Vt 100. 50 ft east of and about 2.3 ft lower than the east edge of US 2. 40.0 ft south of a chain link fence, 1.0 ft southwest of a fiberglass witness post.

- DESCRIPTION PROVIDED BY VERMONT AGENCY OF TRANSPORTATION GEODETIC SURVEY UNIT
- TO ALLOW THE STATE PLANE COORDINATES TO FIT THE AGENCY DESIGN PLANE, SUBTRACT 600,000 FROM THE NORTHING AND SUBTRACT 1,500,000 FROM THE EASTING

TRAVERSE TIES

NORTH =
EAST =
ELEV. =

No Traverse

NORTH =
EAST =
ELEV. =

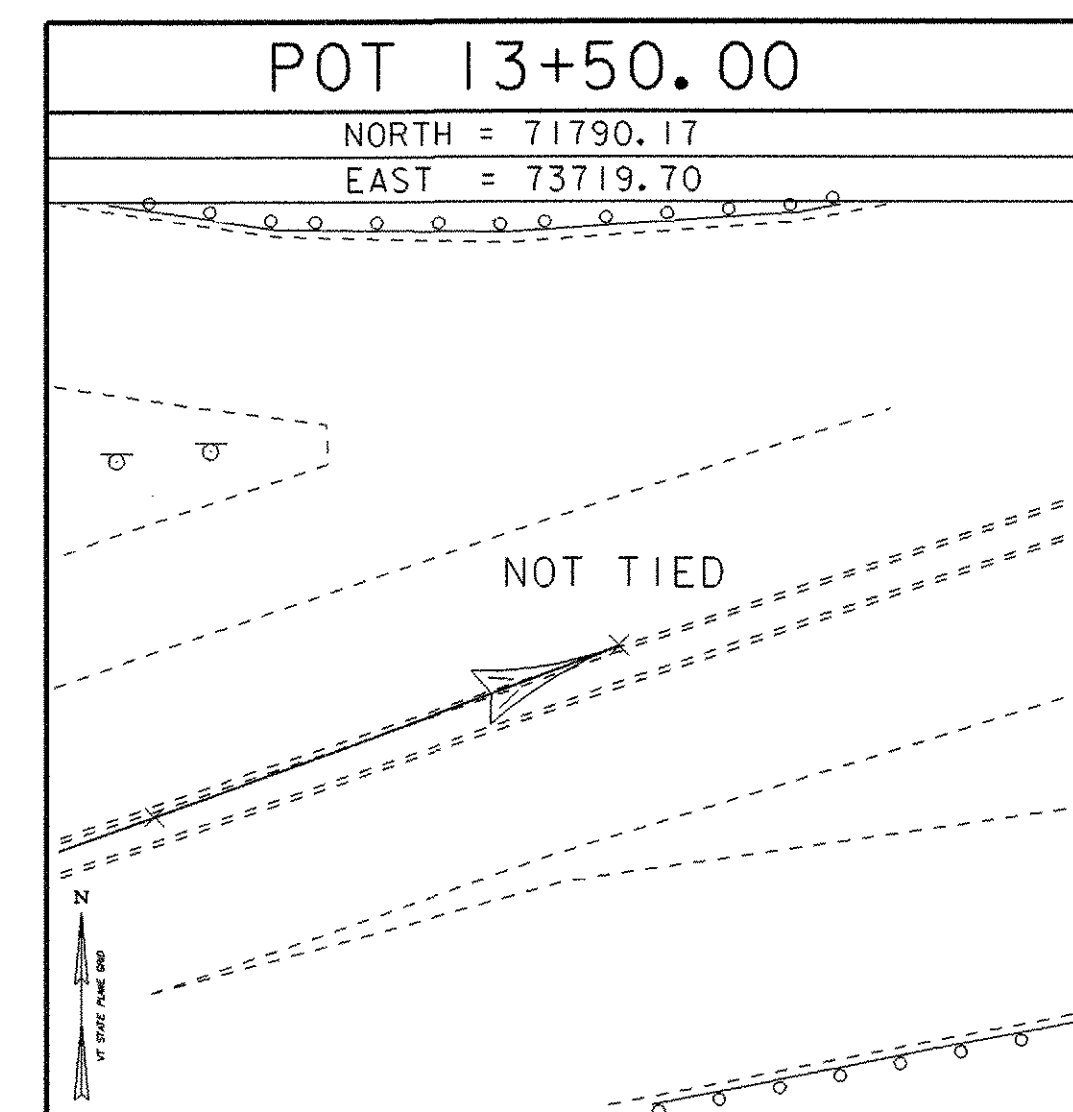
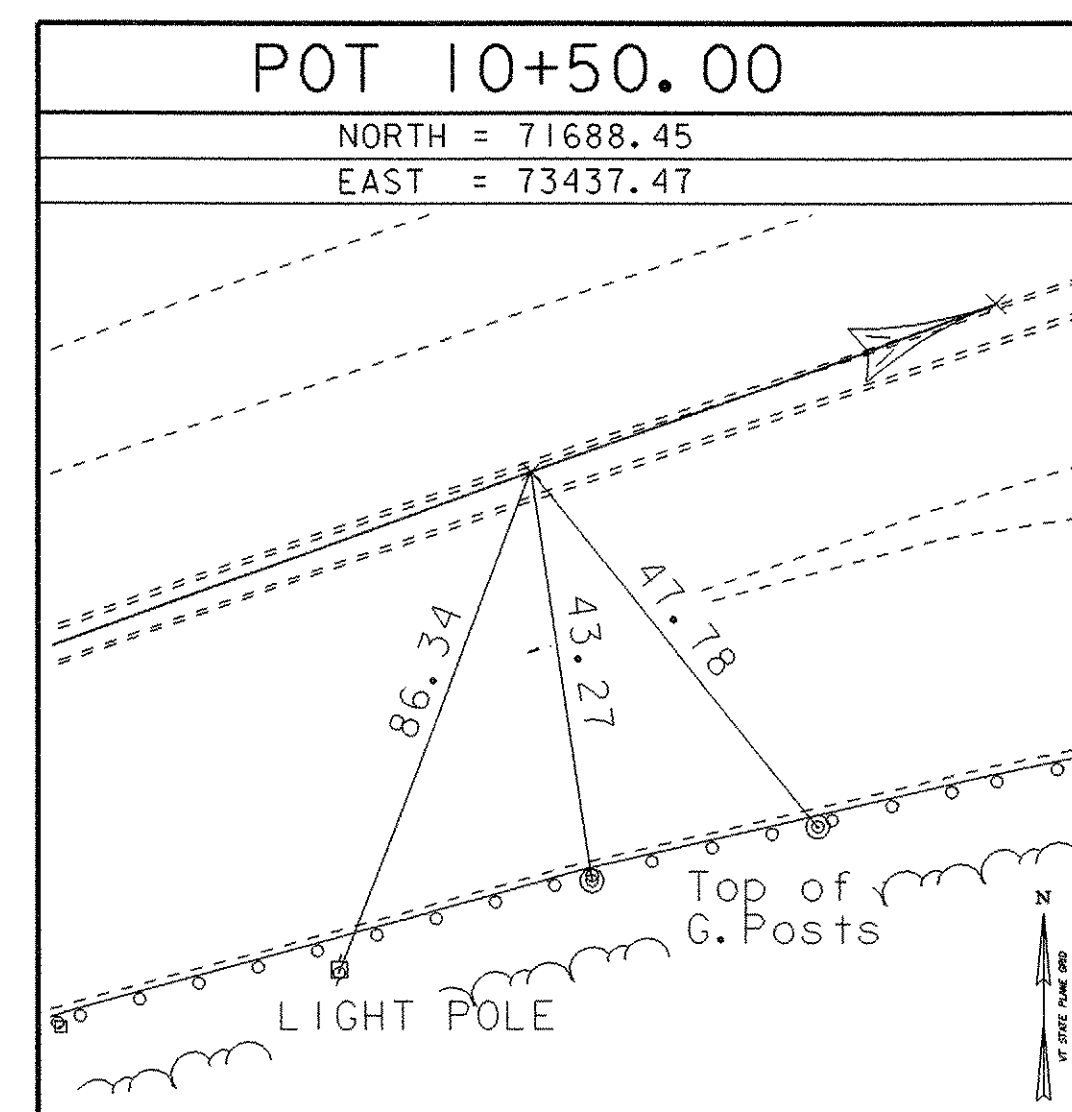
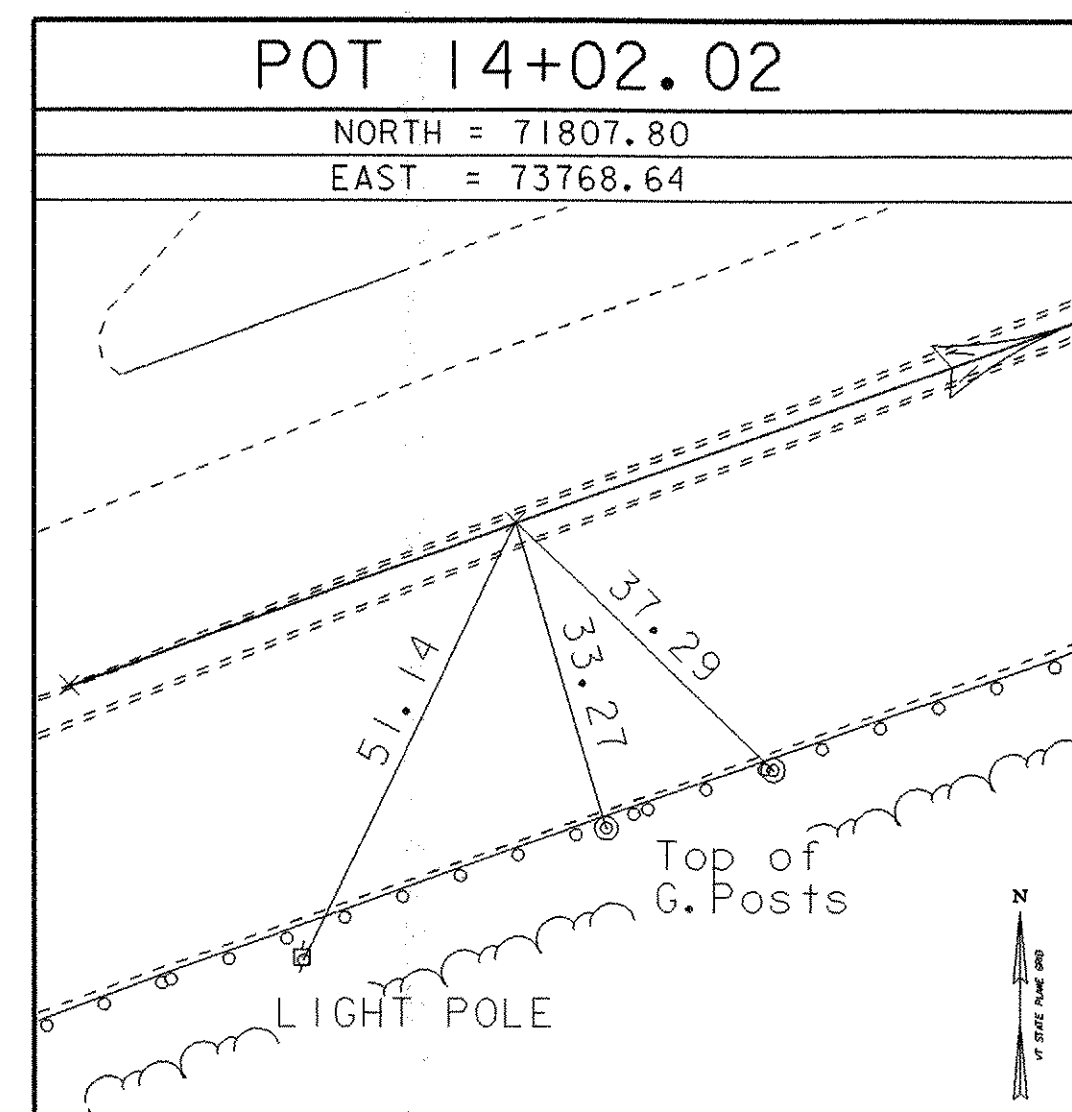
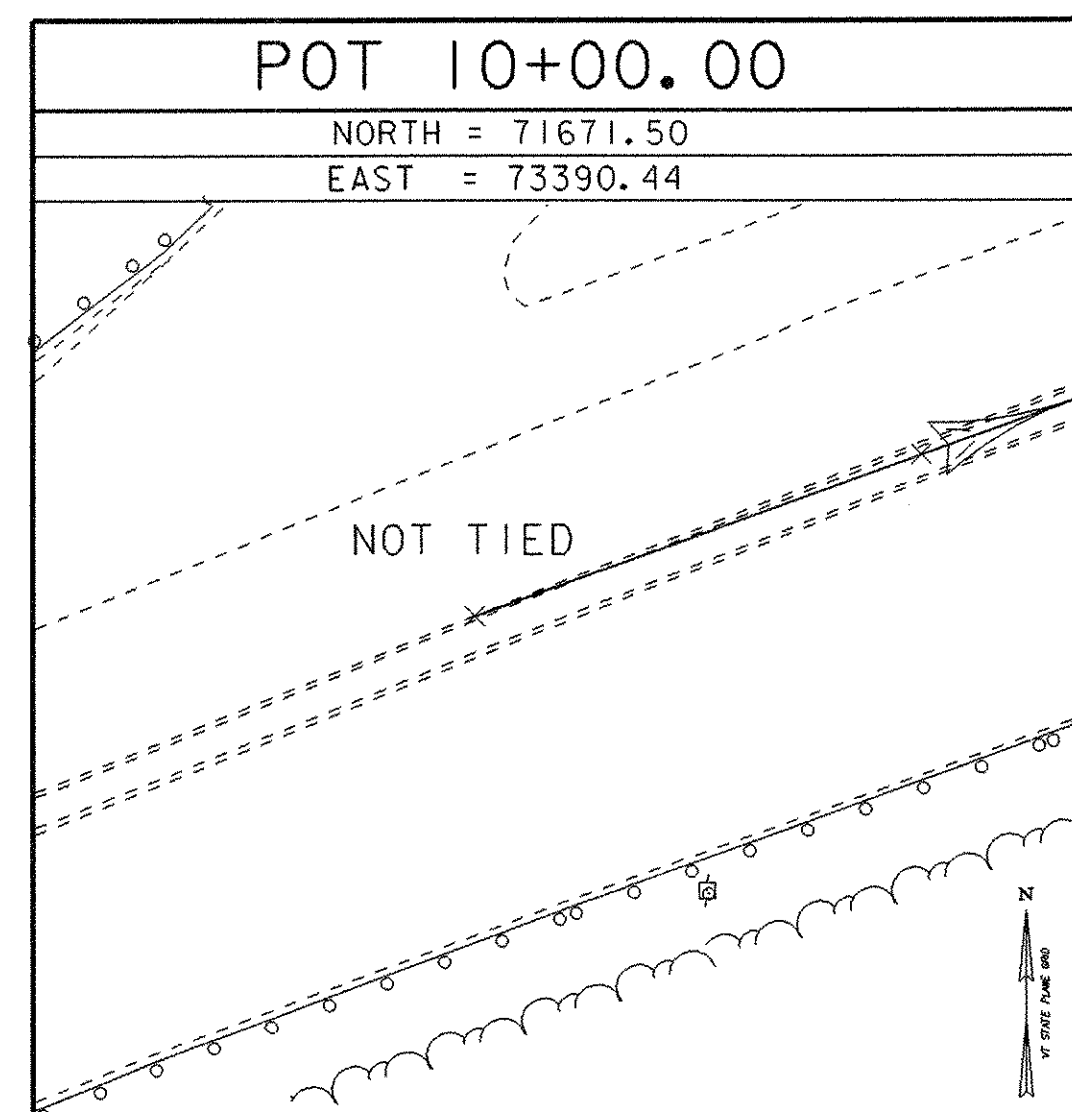
NORTH =
EAST =
ELEV. =

NORTH =
EAST =
ELEV. =

NORTH =
EAST =
ELEV. =

• MAIN TRAVERSE COMPLETED Both GPS control points are in project area no traverse was required

ALIGNMENT TIES



NORTH =
EAST =

• ALIGNMENT STAKED 03/29/07 by R. Gilman P.C. & P. Winters & R. Bullock

DATUM	
VERTICAL	NAVD 88
HORIZONTAL	NAD 83 (92)
ADJUSTMENT	none

PROJECT NAME: Waterbury	
PROJECT NUMBER: NHG SGNL (27)	
FILE NAME: 05b140/survey/x05b140+1.dg	PLOT DATE: 13-NOV-2007
PROJECT LEADER: J. SCHULTZ	DRAWN BY: R. Bullock
DESIGNED BY: B. MCAVOY	CHECKED BY: J. SCHULTZ
+b140+1e.l	SHEET 3 OF 13