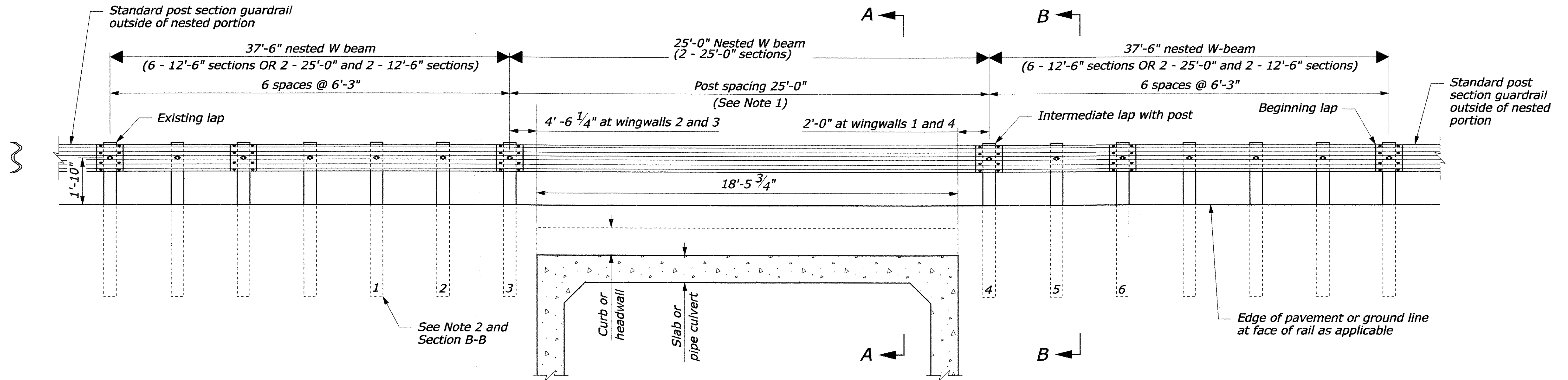
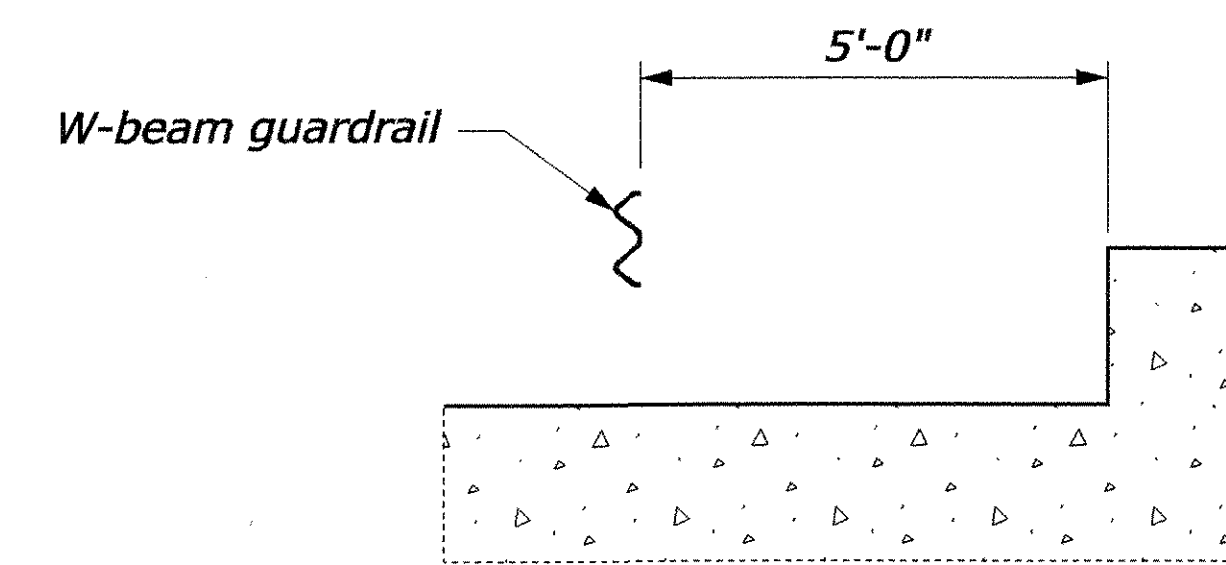
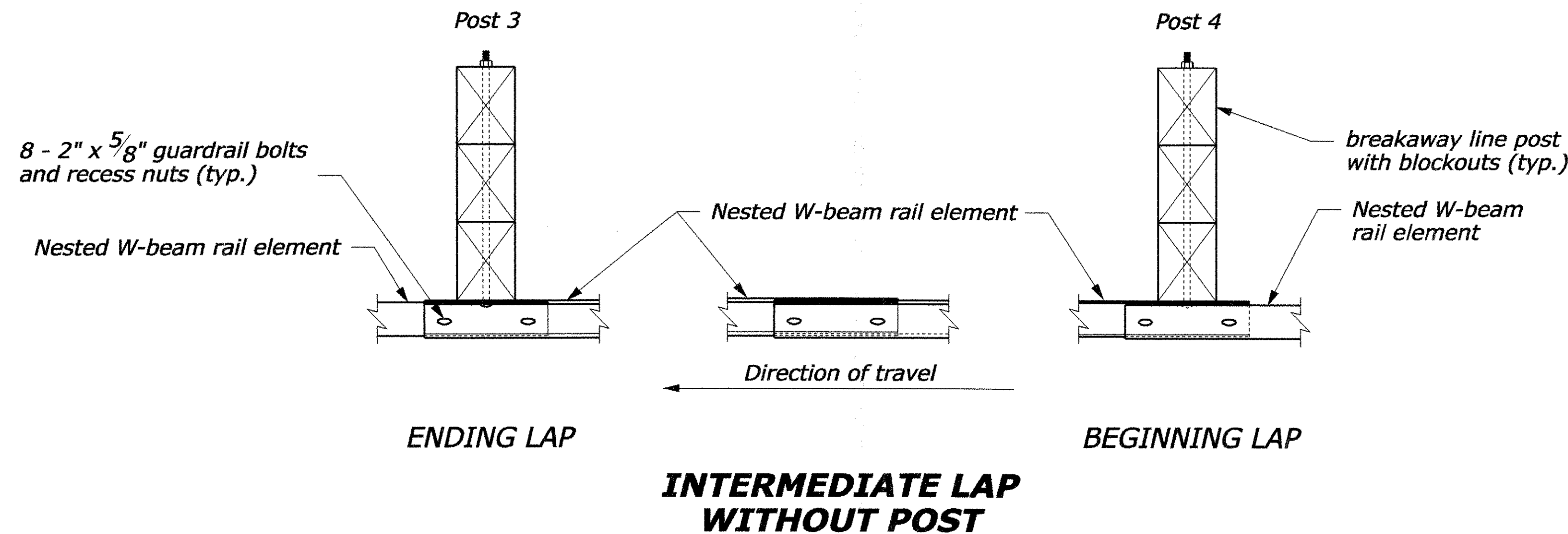


NOTE:

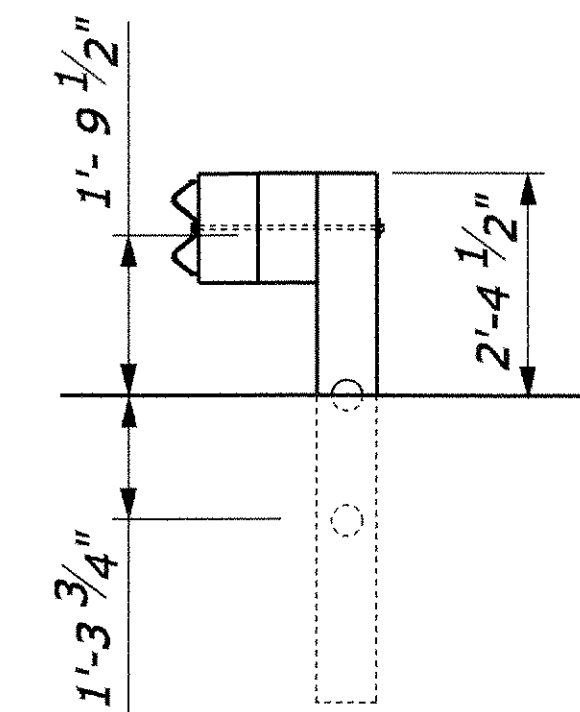
1. 25'-0" rail length will be used to eliminate the intermediate lap without a post.
2. Posts 1 thru 6 are breakaway line posts, see STD G17a. Also see Section B-B for details.
3. Posts 1 thru 6 have two, 6" x 8" blockouts. See Section B-B for details.
4. Install the back face of the nested guardrail a minimum of 5'-0" feet from the face of the curb-like headwall.
5. On Posts 1 thru 6, Guardrail bolt "D", as shown on STD G1, shall be 26" long.
6. On all posts where the rail is double-nested Guardrail bolt "A", as shown on STD G1, shall be 2" long.
7. See STD. G1 and G 17a for additional guardrail details.



ELEVATION



SECTION A-A
(See Note 3)



SECTION B-B
(See Note 2)

**HD STEEL BEAM GUARDRAIL,
GALVANIZED \ NESTED
DETAIL SHEET**

PROJECT NAME:	BRISTOL
PROJECT NUMBER:	ER ST 021-1(22)
FILE NAME:	05bl26\str\05bl26nestrail.dgn
PROJECT LEADER:	M. Evans-Mongeon
DESIGNED BY:	M. EVANS-MONGEON
PLOT DATE:	27-MAR-2007
DRAWN BY:	M. E-MONGEON
CHECKED BY:	
SHEET	39 OF 66