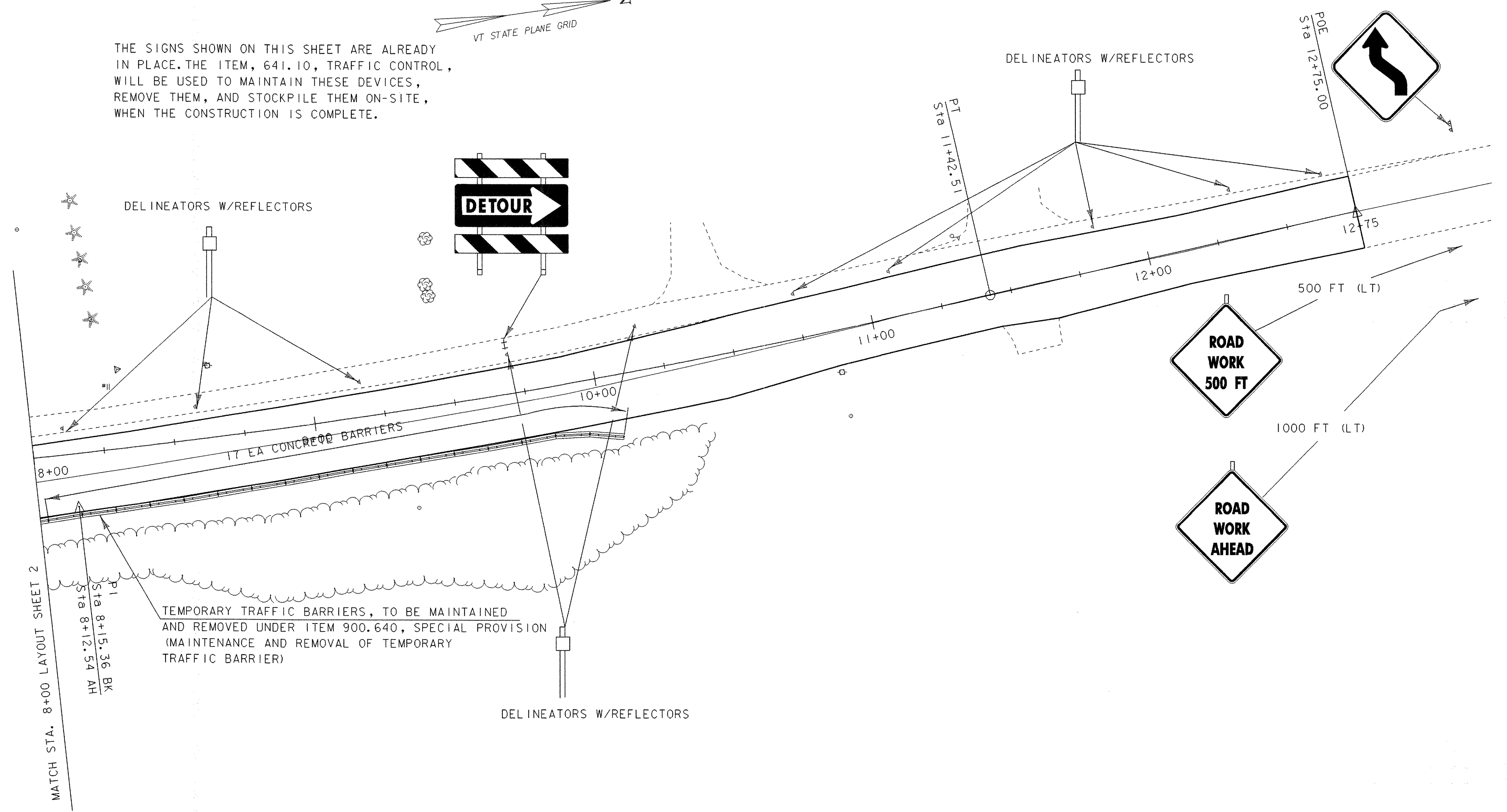


THE SIGNS SHOWN ON THIS SHEET ARE ALREADY IN PLACE. THE ITEM, 641.10, TRAFFIC CONTROL, WILL BE USED TO MAINTAIN THESE DEVICES, REMOVE THEM, AND STOCKPILE THEM ON-SITE, WHEN THE CONSTRUCTION IS COMPLETE.



MATCH STA. 8+00 LAYOUT SHEET 2

PI
Sta 8+15.36 BK
Sta 8+12.54 AH

TEMPORARY TRAFFIC BARRIERS, TO BE MAINTAINED AND REMOVED UNDER ITEM 900.640, SPECIAL PROVISION (MAINTENANCE AND REMOVAL OF TEMPORARY TRAFFIC BARRIER)

DATUM
VERTICAL NAVD 88
HORIZONTAL NAD 83 (96)

SCALE 1" = 20'-0"
20 0 20

EXISTING DETOUR LAYOUT 3

PROJECT: BRISTOL	PROJECT NO.: ER ST 021-1 (22)
DESIGN FILE NAME: 05b126\str\s05b126bdr.dgn	PLOT DATE: 27-MAR-2007
IPARM FILE NAME: s05b126trb3.i	CHECKED BY: M. EVANS-MONG
DESIGNED BY: DISTRICT 5	DRAWN BY: G. ROKES
SQUAD LEADER: M. EVANS-MONGEON	SHEET: 34 OF 66