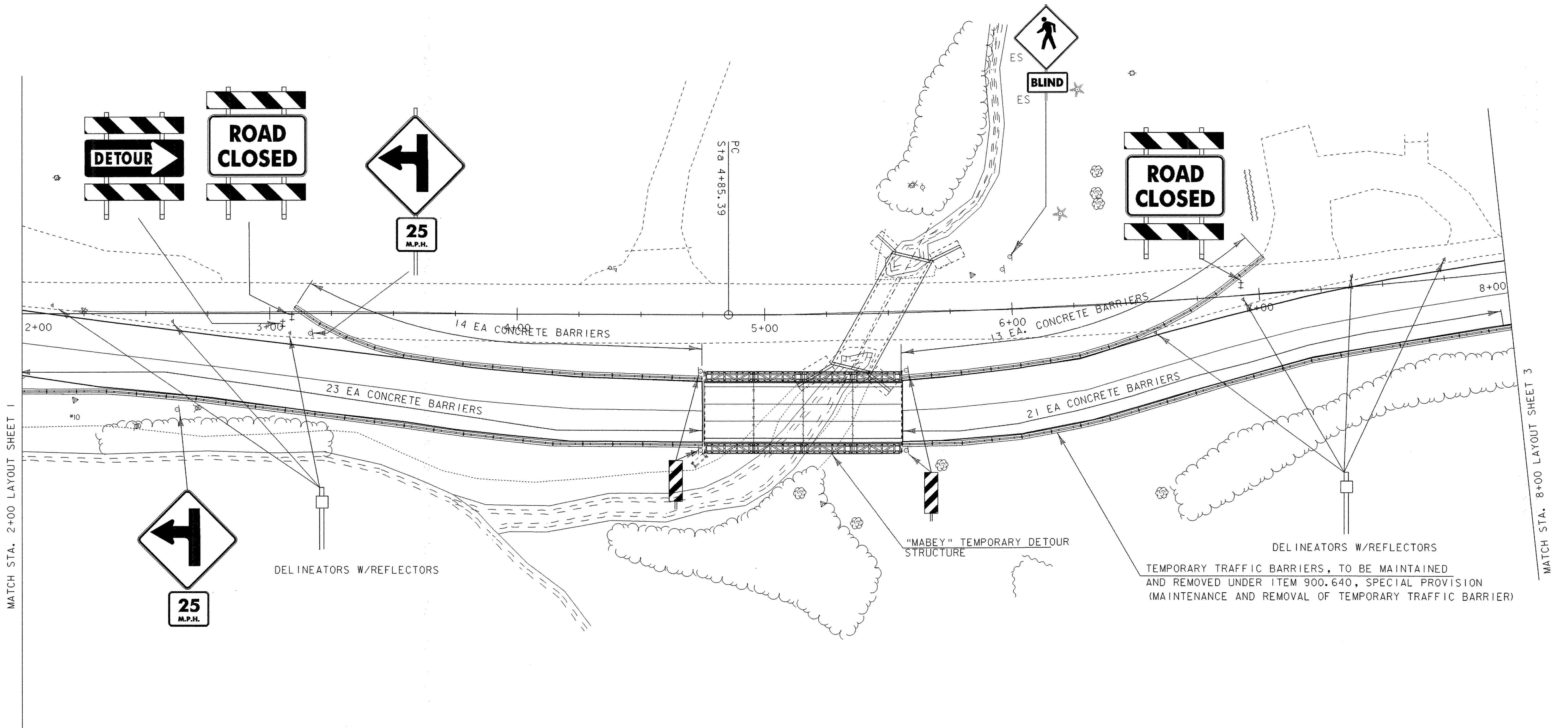
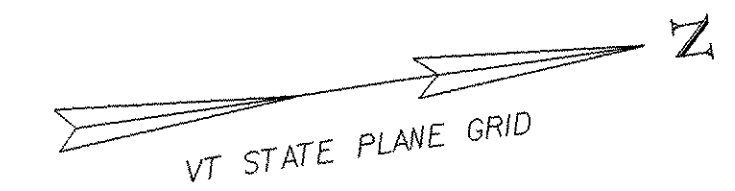


THE SIGNS SHOWN ON THIS SHEET ARE ALREADY IN PLACE. THE ITEM, 641.10, TRAFFIC CONTROL, WILL BE USED TO MAINTAIN THESE DEVICES, REMOVE THEM, AND STOCKPILE THEM ON-SITE, WHEN THE CONSTRUCTION IS COMPLETE.



DELINEATORS W/REFLECTORS  
 TEMPORARY TRAFFIC BARRIERS, TO BE MAINTAINED AND REMOVED UNDER ITEM 900.640, SPECIAL PROVISION (MAINTENANCE AND REMOVAL OF TEMPORARY TRAFFIC BARRIER)

DATUM  
 VERTICAL NAVD 88  
 HORIZONTAL NAD 83 (96)

SCALE 1" = 20'-0"

<b>EXISTING DETOUR LAYOUT 2</b>	
PROJECT: BRISTOL	PROJECT NO.: ER ST 021-1 (22)
DESIGN FILE NAME: 05b126\str\s05b126bdr.dgn	PLOT DATE: 27-MAR-2007
IPARM FILE NAME: s05b126trb2.i	CHECKED BY: M. EVANS-MONG
DESIGNED BY: DISTRICT 5	DRAWN BY: G. ROKES
SQUAD LEADER: M. EVANS-MONGEON	SHEET: 33 OF 66