

ANCHOR FOR STEEL BEAM RAIL
 STA. 4+70 RT
 STA. 5+01 LT
 STA. 6+05 RT
 STA. 6+12 LT

CONSTRUCT PAVED DRIVE
 STA. 4+55.00 LT
 STA. 7+25.00 RT @ 43.5°

DURABLE 4 INCH WHITE LINE
 STA. 2+00 LT - STA. 8+00 LT
 STA. 2+00 RT - STA. 8+00 RT

HD STEEL BEAM GUARDRAIL, GALVANIZED
 STA. 4+64.46 RT - STA. 5+25.55 RT
 STA. 5+50.43 RT - STA. 6+11.28 RT
 STA. 4+95.74 LT - STA. 5+44.35 LT
 STA. 5+69.47 LT - STA. 6+18.03 LT

DURABLE 4 INCH YELLOW LINE
 STA. 2+00 - STA. 8+00 LT and RT

RELOCATE MAIL BOX, SINGLE SUPPORT
 STA. 4+37.52 LT 18.75 FT

~~ELIMINATED
 ERECTING SALVAGED SIGNS
 STA. 6+00.00 LT 21.01 FT
 STA. 6+00.00 LT 21.01 FT~~

HD STEEL BEAM GUARDRAIL
 GALVANIZED/ NESTED
 STA. 5+25.55 RT - STA. 5+50.43 RT
 STA. 5+44.35 LT - STA. 5+69.47 LT

COLD PLANING BITUMINOUS PAYMENT
 STA. 2+00 - STA. 3+30 **2+74**
 STA. **6+20** - STA. 8+00
6+82

CURVE DATA:
 Delta = 12°58'58.17"
 D = 1°58'32.58"
 R = 2900.00'
 T = 329.97'
 L = 657.12'
 E = 18.71'

CONSTRUCT DRIVE (PAVED COMMERCIAL)
 STA. 7+75.00 LT (20' PAVED APRON)

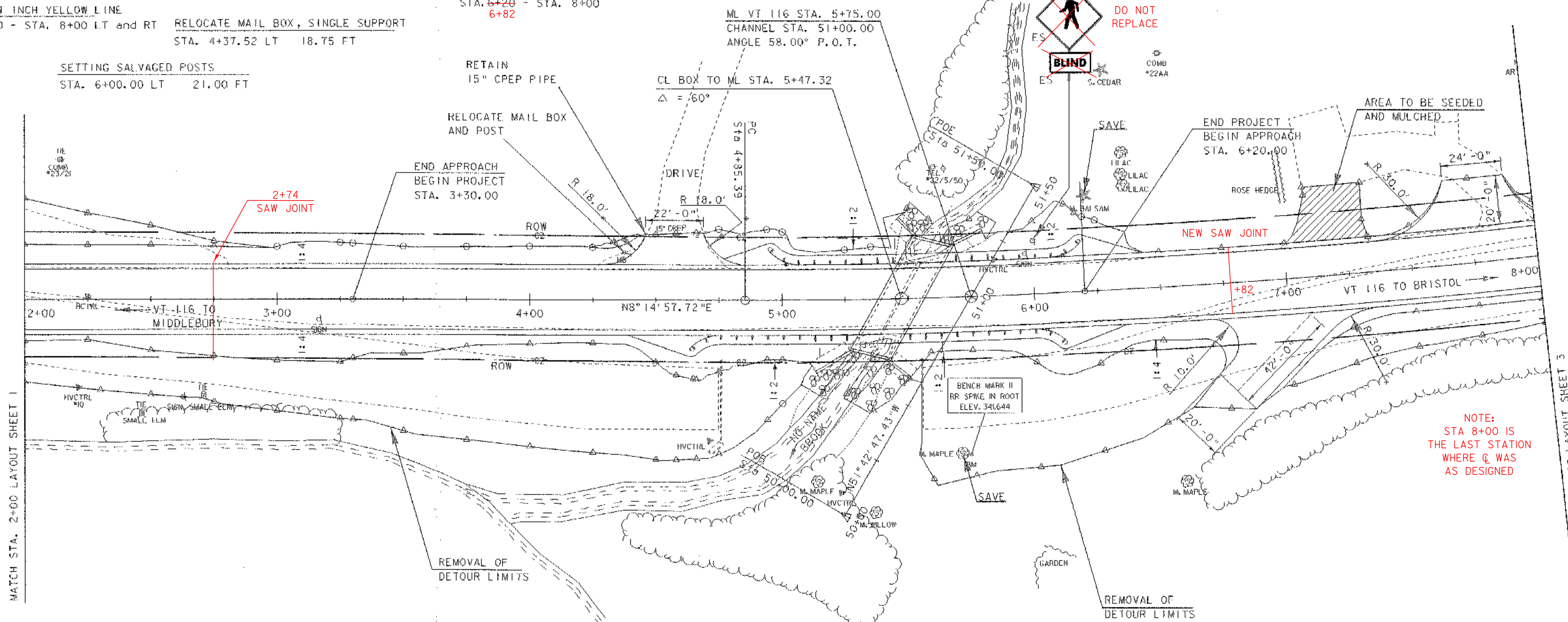
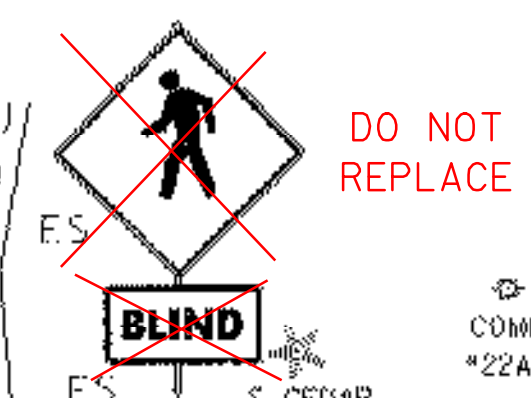
EXISTING BRIDGE INFORMATION
 14 FOOT CORRUGATED STEEL ARCH
 ON CAST-IN-PLACE CONCRETE FOOTING



SETTING SALVAGED POSTS
 STA. 6+00.00 LT 21.00 FT

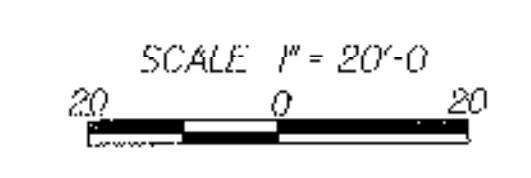
RETAIN
 15" CPEP PIPE

CL BOX TO ML STA. 5+47.32
 $\Delta = 60^\circ$



NOTE:
 STA 8+00 IS
 THE LAST STATION
 WHERE Q WAS
 AS DESIGNED

DATUM	
VERTICAL	NAVD 88
HORIZONTAL	NAD 83 (96)



LAYOUT SHEET 2

PROJECT: BRISTOL	PROJECT NO.: ER ST 021-1 (22)
DESIGN FILE NAME: s05b126\str\s05b126bdr.dgn	PLT DATE: 27-MAR-2007
IPARM FILE NAME: s05b1261y2.i	CHECKED BY: G. ROKES
DESIGNED BY: M. EVANS-MONGEON	DRAWN BY: G. ROKES
SQUAD LEADER: M. EVANS-MONGEON	SHEET: 14 OF 66

MATCH STA. 2+00 LAYOUT SHEET 1

MATCH STA. 8+00 LAYOUT SHEET 3