

TOWN OF BRISTOL

① **DURABLE 4 INCH WHITE LINE PAINT**
 STA. 8+00 LT - STA. 12+75 LT
 STA. 8+00 RT - STA. 12+75 RT

DURABLE 4 INCH YELLOW LINE PAINT
 STA. 8+00 - STA. 12+75 LT and RT
 13+80

COLD PLANING, BITUMINOUS PAVEMENT
 STA. 8+00 - STA. 12+75 13+79

CONSTRUCT DRIVE (PAVED)
 STA. 10+43.00 LT (24' PAVED APRON)
 STA. 11+56.00 LT (24' PAVED APRON)

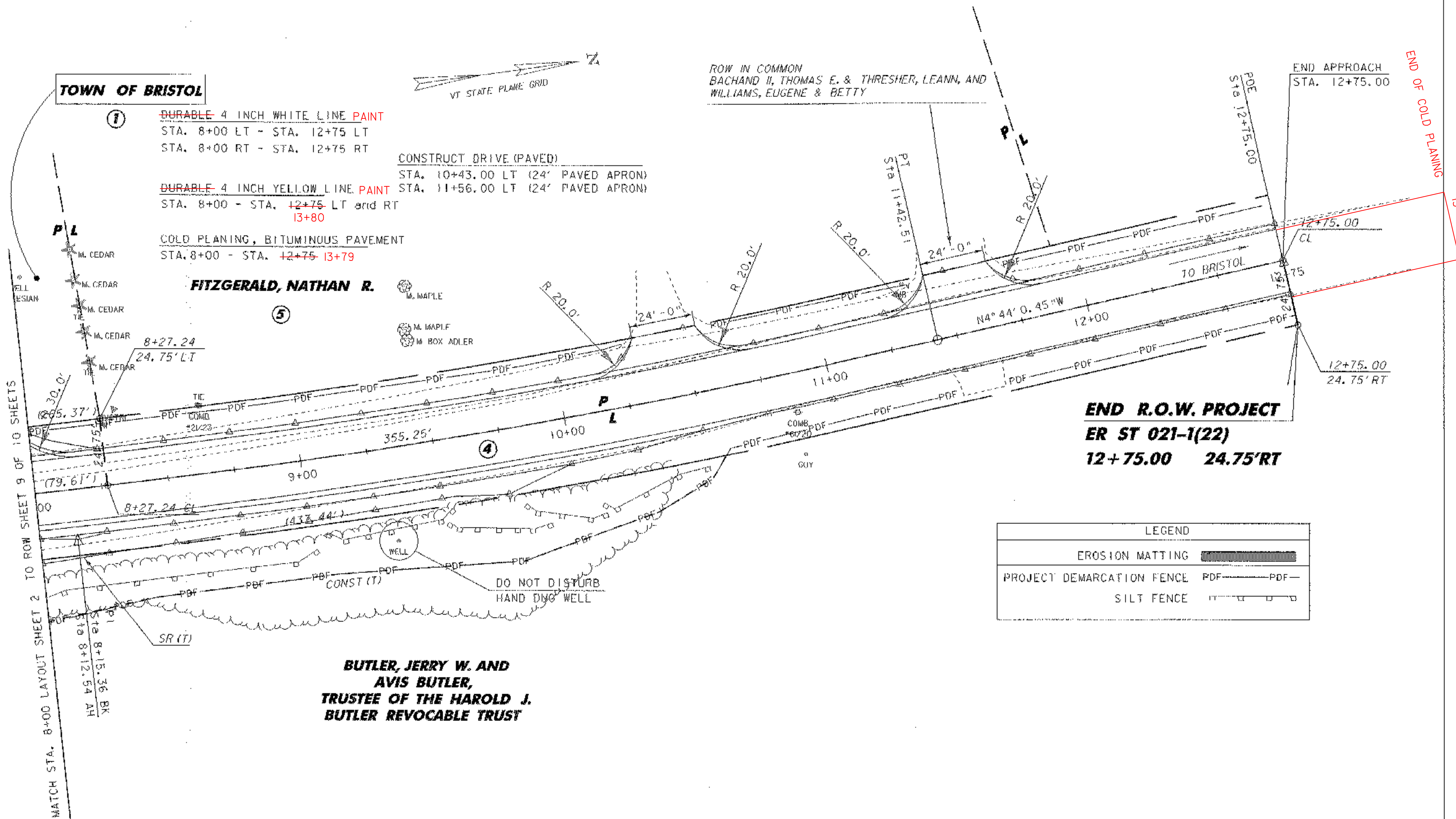
FITZGERALD, NATHAN R.

- ⑤ M. CEDAR
- M. MAPLE
- M. MAPLE
- M. BOX ADLER

**BUTLER, JERRY W. AND AVIS BUTLER,
 TRUSTEE OF THE HAROLD J. BUTLER REVOCABLE TRUST**

ROW IN COMMON
 BACHAND II, THOMAS E. & THRESHER, LEANN, AND
 WILLIAMS, EUGENE & BETTY

END APPROACH
 STA. 12+75.00



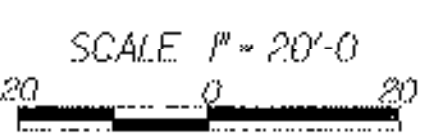
**END R.O.W. PROJECT
 ER ST 021-1(22)
 12+75.00 24.75' RT**

LEGEND	
EROSION MATTING	
PROJECT DEMARCATION FENCE	PDF — PDF —
SILT FENCE	

DATUM	
VERTICAL	NAVD 88
HORIZONTAL	NAD 83 (96)

LINES SHOWN ON THIS PLAN AS EXISTING PROPERTY LINES P/L ARE BELIEVED TO BE ACCURATE BUT SHOULD NOT BE RELIED UPON FOR PURPOSES UNRELATED TO THE STATE OF VERMONT'S ACQUISITION OF LAND AND RIGHTS FOR THIS PROJECT.

ALL DRIVES AS INDICATED ON PLANS ARE SUBJECT TO PERMITS PURSUANT TO TITLE 19 SECTION III, V.S.A



LAYOUT SHEET 3

FOR R.O.W. USE ONLY

PROJECT: BRISTOL	PROJECT NO. # ER ST 021-1 (22)
DESIGN FILE NAME: 05b126\5fr\05b126bdr.dgn	PLOT DATE: 20-MAR-2007
IPARM FILE NAME: s05b1261y3.i	CHECKED BY: G. ROKES
DESIGNED BY: M. EVANS-MONGEON	DRAWN BY: G. ROKES
SQUAD LEADER: M. EVANS-MONGEON	
ROW SHEET: 10 OF 10 SHEETS	SHEET 10 OF 66