

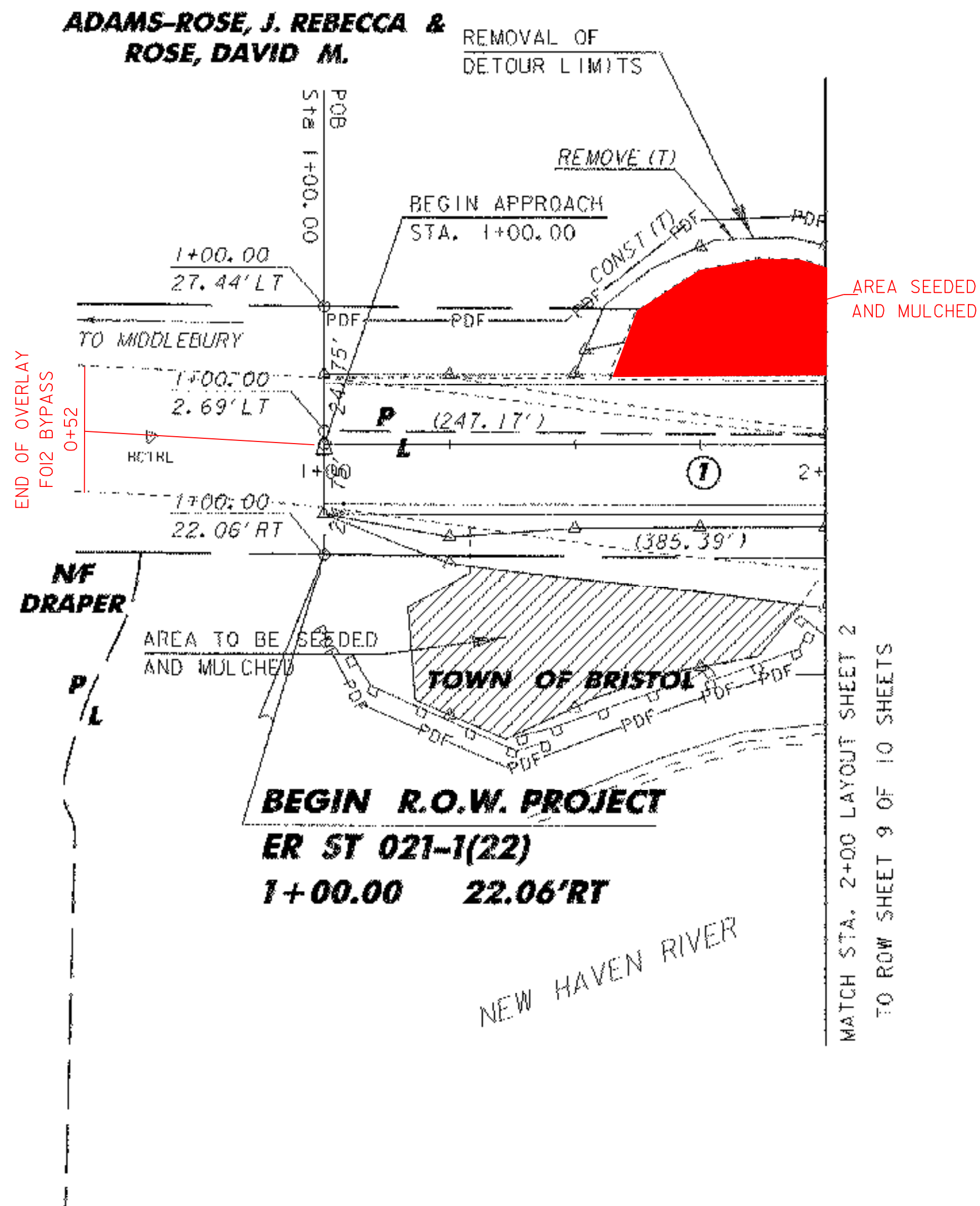
DURABLE 4 INCH WHITE LINE
 STA. 1+00 LT - STA. 2+00 LT
 STA. 1+00 RT - STA. 2+00 RT

DURABLE 4 INCH YELLOW LINE
 STA. 1+00 - STA. 2+00 LT and RT



COLD PLANING, BITUMINOUS PAVEMENT
 STA. 1+00 - STA. 2+00

**ADAMS-ROSE, J. REBECCA &
 ROSE, DAVID M.**



LINES SHOWN ON THIS PLAN AS EXISTING PROPERTY LINES P/L ARE BELIEVED TO BE ACCURATE BUT SHOULD NOT BE RELIED UPON FOR PURPOSES UNRELATED TO THE STATE OF VERMONT'S ACQUISITION OF LAND AND RIGHTS FOR THIS PROJECT.

ALL DRIVES AS INDICATED ON PLANS ARE SUBJECT TO PERMITS PURSUANT TO TITLE 19 SECTION III, V.S.A

**FOR R.O.W.
 USE ONLY**

LAYOUT SHEET 1

| | |
|---|---------------------------------|
| PROJECT: BRISTOL | PROJECT NO.: ER ST 021-1(22) |
| DESIGN FILE NAME: 05b126\5fr\505b126bdr.dgn | PLOT DATE: 20-MAR-2007 |
| IPARM FILE NAME: s05b1261y1.i | DESIGNED BY: M. EVANS-MONGEON |
| | CHECKED BY: G. ROKES |
| | SQUAD LEADER: M. EVANS-MONGEON |
| | DRAWN BY: G. ROKES |
| ROW SHEET: 8 OF 10 SHEETS | SHEET 8 OF 66 |

| | |
|------------|-------------|
| DATUM | |
| VERTICAL | NAVD 88 |
| HORIZONTAL | NAD 83 (96) |

