

TEMPORARY 4in YELLOW LINE (PAINT)
4in YELLOW LINE
STA 141+00 TO 152+00
STA 147+10
(WITH CENTERLINE BREAKS FOR TOWN HIGHWAYS)
SOLID LT&RT
DOUBLE SOLID RT

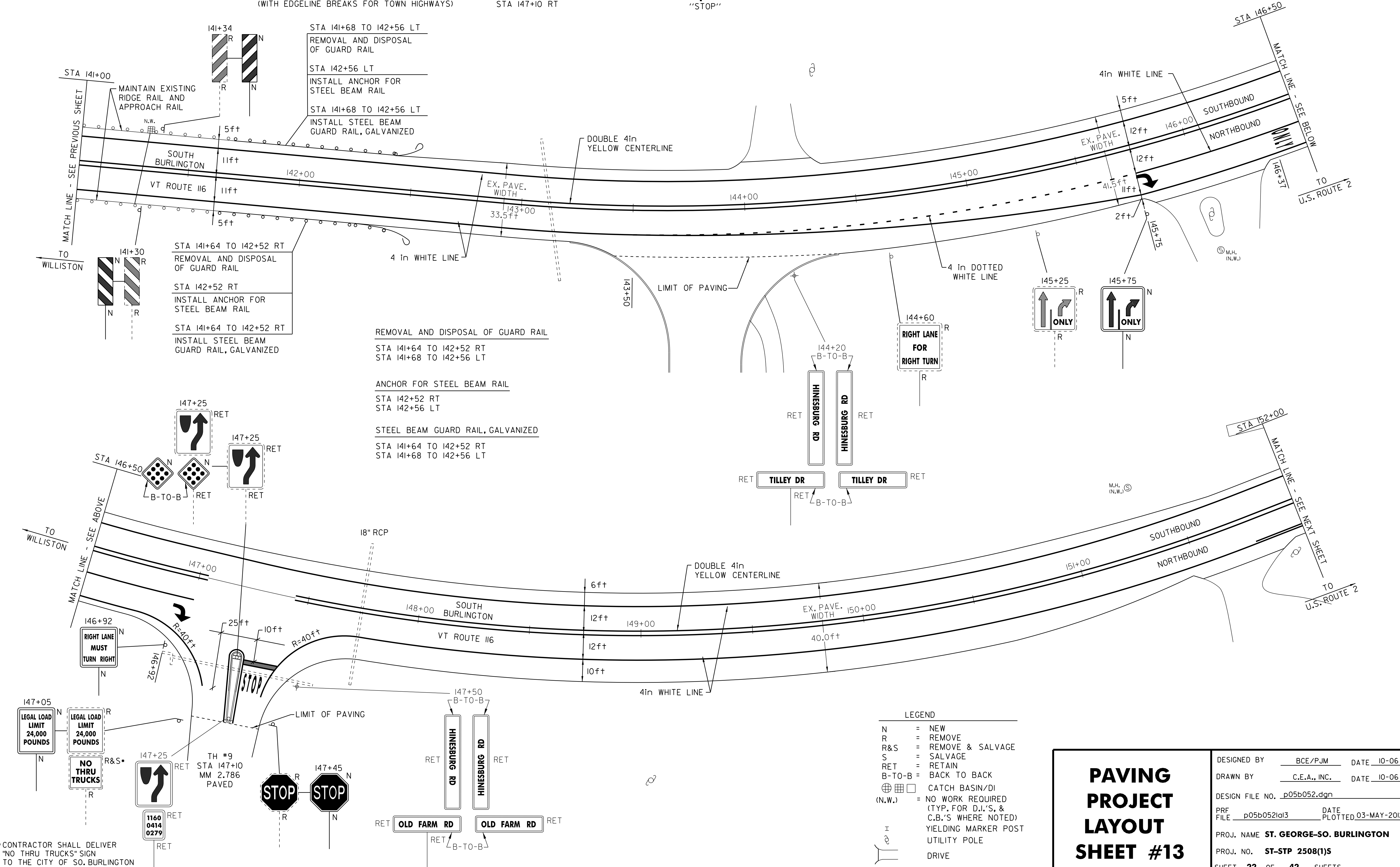
TEMPORARY 4in WHITE LINE (PAINT)
4in WHITE LINE
STA 141+00 TO 152+00
STA 143+50 TO 145+75
STA 145+75 TO 147+00
(WITH EDGE LINE BREAKS FOR TOWN HIGHWAYS)
SOLID LT&RT
DOTTED RT
SOLID RT

LETTER OR SYMBOL
STA 145+75 RT
STA 146+37 RT
STA 146+92 RT
STA 147+10 RT
"ONLY"
"STOP"

TEMPORARY LETTER OR SYMBOL (PAINT)
STA 145+75 RT
STA 146+92 RT
STA 147+10 RT
"STOP"

TEMPORARY 24in STOP BAR (PAINT)
24in STOP BAR
STA 147+10 RT
TH #9

REMOVING SIGNS
7



REMOVAL AND DISPOSAL OF GUARD RAIL
STA 141+64 TO 142+52 RT
STA 141+68 TO 142+56 LT

ANCHOR FOR STEEL BEAM RAIL
STA 142+52 RT
STA 142+56 LT

STEEL BEAM GUARD RAIL, GALVANIZED
STA 141+64 TO 142+52 RT
STA 141+68 TO 142+56 LT

- LEGEND**
- N = NEW
 - R = REMOVE
 - R&S = REMOVE & SALVAGE
 - S = SALVAGE
 - RET = RETAIN
 - B-T-O-B = BACK TO BACK
 - ☐ = CATCH BASIN/DI (N.W.)
 - ⊕ = NO WORK REQUIRED (TYP. FOR D.I.'S, & C.B.'S WHERE NOTED)
 - ⊕ = YIELDING MARKER POST
 - ⊕ = UTILITY POLE
 - ⊕ = DRIVE

PAVING PROJECT LAYOUT SHEET #13

DESIGNED BY	BCE/PJM	DATE	10-06
DRAWN BY	C.E.A., INC.	DATE	10-06
DESIGN FILE NO.	p05b052.dgn		
PRF FILE	p05b052la13	DATE PLOTTED	03-MAY-2012 17
PROJ. NAME	ST. GEORGE-SO. BURLINGTON		
PROJ. NO.	ST-STP 2508(1)S		
SHEET	22	OF	42 SHEETS

CONTRACTOR SHALL DELIVER "NO THRU TRUCKS" SIGN TO THE CITY OF SO. BURLINGTON