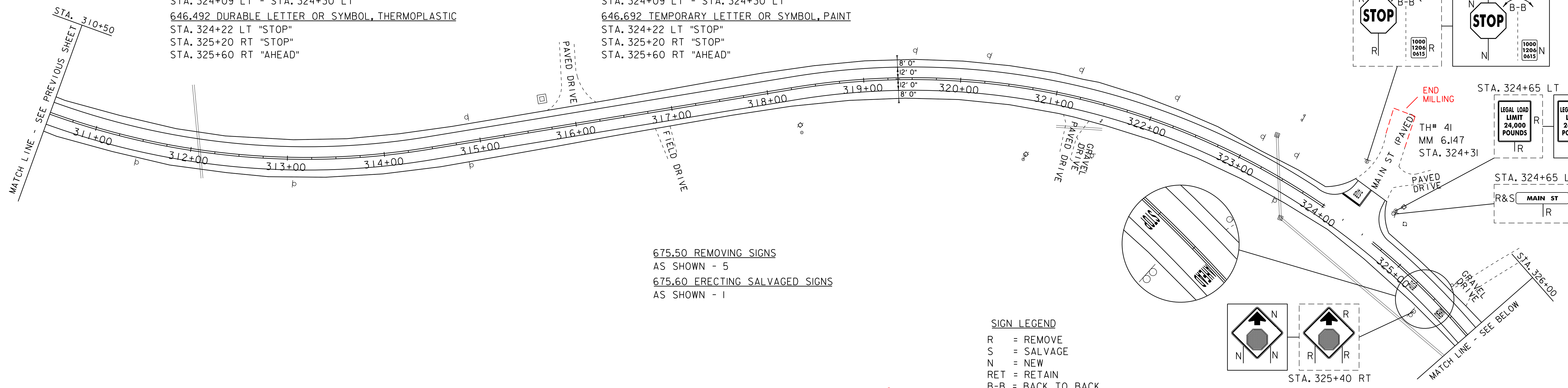


646.402 DURABLE 4" WHITE LINE, THERMOPLASTIC
 STA. 310+50 - STA. 326+00 (SOLID LT & RT)
 (WITH EDGELINE BREAKS AT TOWN ROADS)
 646.412 DURABLE 4" YELLOW LINE, THERMOPLASTIC
 STA. 310+50 - STA. 326+00 (SOLID LT & RT)
 (WITH CENTERLINE BREAKS AT TOWN ROADS)
 646.482 DURABLE 24 INCH STOP BAR, THERMOPLASTIC
 STA. 324+09 LT - STA. 324+30 LT
 646.492 DURABLE LETTER OR SYMBOL, THERMOPLASTIC
 STA. 324+22 LT "STOP"
 STA. 325+20 RT "STOP"
 STA. 325+60 RT "AHEAD"

646.602 TEMPORARY 4" WHITE LINE, PAINT
 STA. 310+50 - STA. 326+00 (SOLID LT & RT)
 (WITH EDGELINE BREAKS AT TOWN ROADS)
 646.612 TEMPORARY 4" YELLOW LINE, PAINT
 STA. 310+50 - STA. 326+00 (SOLID LT & RT)
 (WITH CENTERLINE BREAKS AT TOWN ROADS)
 646.682 TEMPORARY 24 INCH STOP BAR, PAINT
 STA. 324+09 LT - STA. 324+30 LT
 646.692 TEMPORARY LETTER OR SYMBOL, PAINT
 STA. 324+22 LT "STOP"
 STA. 325+20 RT "STOP"
 STA. 325+60 RT "AHEAD"

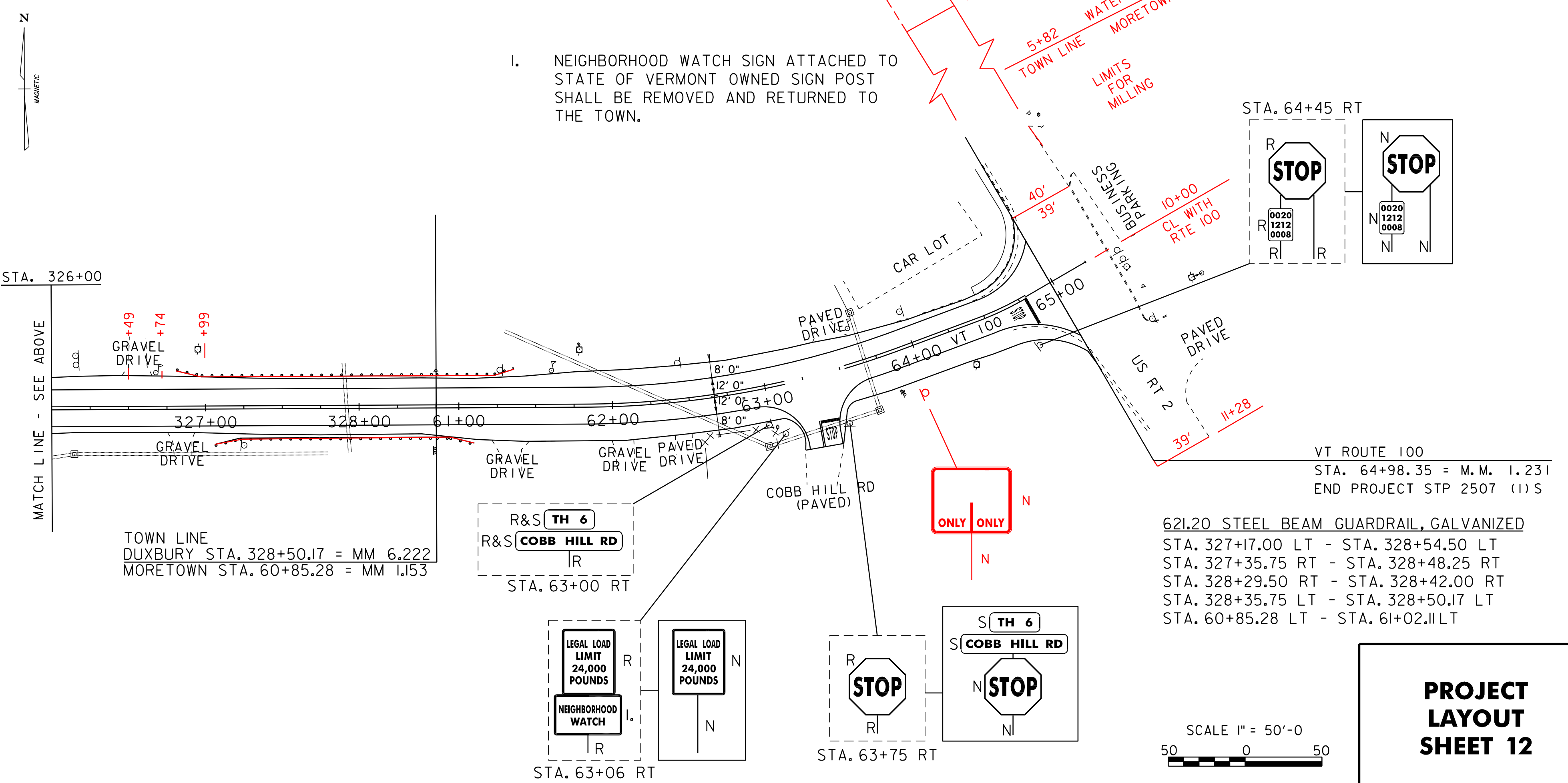
MATCH LINE - SEE PREVIOUS SHEET
 STA. 310+50



675.50 REMOVING SIGNS
 AS SHOWN - 5
 675.60 ERECTING SALVAGED SIGNS
 AS SHOWN - 1

SIGN LEGEND
 R = REMOVE
 S = SALVAGE
 N = NEW
 RET = RETAIN
 B-B = BACK TO BACK

646.402 DURABLE 4" WHITE LINE, THERMOPLASTIC
 STA. 326+00 - STA. 328+50 (SOLID LT & RT)
 STA. 60+85 - STA. 64+98 (SOLID LT & RT)
 (WITH EDGELINE BREAKS AT TOWN ROADS)
 646.412 DURABLE 4" YELLOW LINE, THERMOPLASTIC
 STA. 326+00 - STA. 328+50 (SOLID LT & RT)
 STA. 60+85 - STA. 64+79 (SOLID LT & RT)
 (WITH CENTERLINE BREAKS AT TOWN ROADS)
 646.482 DURABLE 24 INCH STOP BAR, THERMOPLASTIC
 STA. 63+30 RT - STA. 63+41RT
 STA. 64+75 RT
 646.492 DURABLE LETTER OR SYMBOL, THERMOPLASTIC
 STA. 63+35 RT "STOP"
 STA. 64+41RT "STOP"
 646.602 TEMPORARY 4" WHITE LINE, PAINT
 STA. 326+00 - STA. 328+50 (SOLID LT & RT)
 STA. 60+85 - STA. 64+98 (SOLID LT & RT)
 (WITH EDGELINE BREAKS AT TOWN ROADS)
 646.612 TEMPORARY 4" YELLOW LINE, PAINT
 STA. 326+00 - STA. 328+50 (SOLID LT & RT)
 STA. 60+85 - STA. 64+79 (SOLID LT & RT)
 (WITH CENTERLINE BREAKS AT TOWN ROADS)
 646.692 TEMPORARY LETTER OR SYMBOL, PAINT
 STA. 63+35 RT "STOP"
 STA. 64+41RT "STOP"
 646.682 TEMPORARY 24 INCH STOP BAR, PAINT
 STA. 63+30 RT - STA. 63+41RT
 STA. 64+75 RT



621.21HD STEEL BEAM GUARDRAIL, GALVANIZED
 STA. 327+48.25 RT - STA. 327+79.50 RT (SCHEDULE II)
 STA. 327+54.50 LT - STA. 327+79.50 LT (SCHEDULE I)
 STA. 328+04.50 LT - STA. 328+35.75 LT (SCHEDULE II)
 STA. 328+04.50 RT - STA. 328+29.50 RT (SCHEDULE I)
 621.50 MANUFACTURED TERMINAL SECTION, FLARED
 STA. 326+79.50 LT - STA. 327+17.00 LT
 STA. 326+98.25 RT - STA. 327+35.75 RT
 STA. 328+42.00 RT - STA. 61+14.61RT
 STA. 61+02.11LT - STA. 61+39.61LT
 621.80 REMOVAL AND DISPOSAL OF GUARDRAIL
 STA. 326+81LT - STA. 328+50 LT
 STA. 327+06 RT - STA. 328+50 RT
 STA. 60+85 LT - STA. 61+06 LT
 STA. 60+85 RT - STA. 61+10 RT
 675.50 REMOVING SIGNS
 AS SHOWN - 7
 675.60 ERECTING SALVAGED SIGNS
 AS SHOWN - 2
 676.10 DELINEATOR WITH STEEL POST, WHITE
 STA. 326+81.00 LT
 STA. 327+06.00 RT
 STA. 61+10.00 RT
 STA. 61+41.12 LT
 900.640 SPECIAL PROVISION (BRIDGE RAILING REPAIR, TYPE I)
 STA. 327+79.50 LT - STA. 328+04.50 LT
 STA. 327+79.50 RT - STA. 328+04.50 RT

621.20 STEEL BEAM GUARDRAIL, GALVANIZED
 STA. 327+17.00 LT - STA. 328+54.50 LT
 STA. 327+35.75 RT - STA. 328+48.25 RT
 STA. 328+29.50 RT - STA. 328+42.00 RT
 STA. 328+35.75 LT - STA. 328+50.17 LT
 STA. 60+85.28 LT - STA. 61+02.11LT

SIGN LEGEND
 R = REMOVE
 S = SALVAGE
 N = NEW
 RET = RETAIN
 B-B = BACK TO BACK

DATUM
 VERTICAL N/A
 HORIZONTAL N/A

SCALE 1" = 50'-0"
 50 0 50

PROJECT LAYOUT SHEET 12

PROJECT NAME: MORETOWN-DUXBURY-MORETOWN
 PROJECT NUMBER: STP 2507 (I)S
 FILE NAME: p05b050.dgn
 PROJECT LEADER: EPD
 DESIGNED BY: CDL
 PLOT FILE: p05b050pl12.i
 PLOT DATE: 31-OCT-2012 16:09
 DRAWN BY: SJB/RHB
 CHECKED BY: EPD
 SHEET 24 OF 33