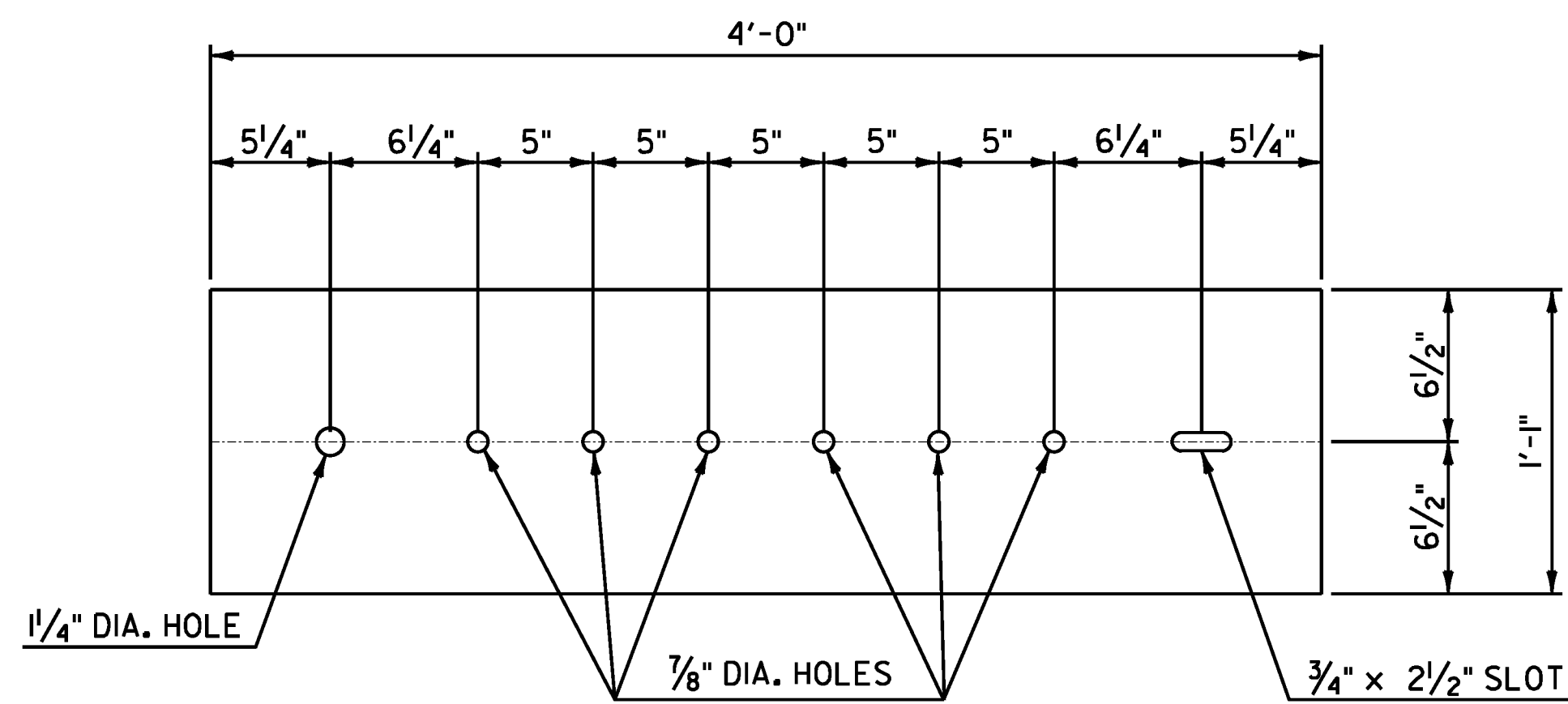
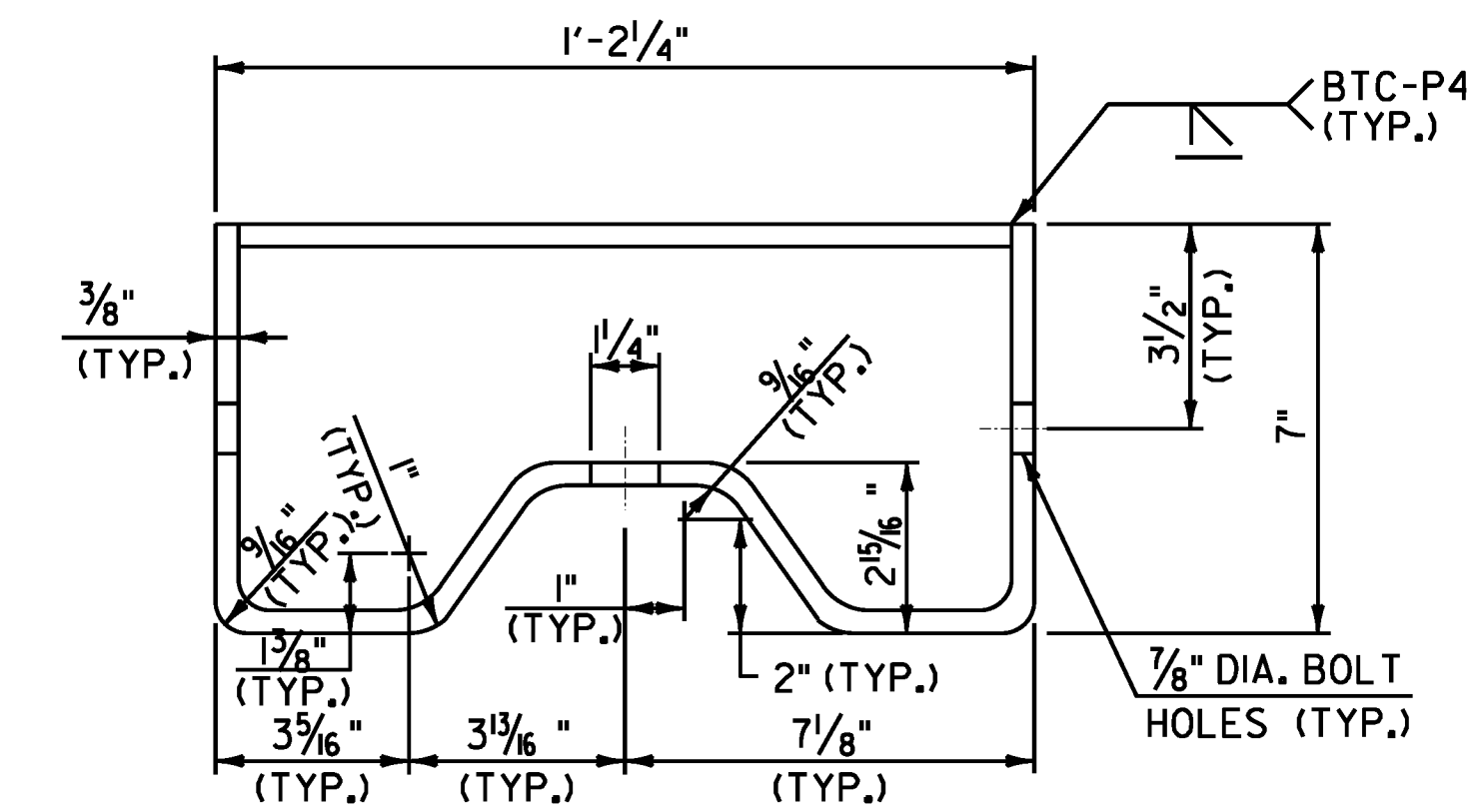


CONNECTION DETAILS AT POST #1

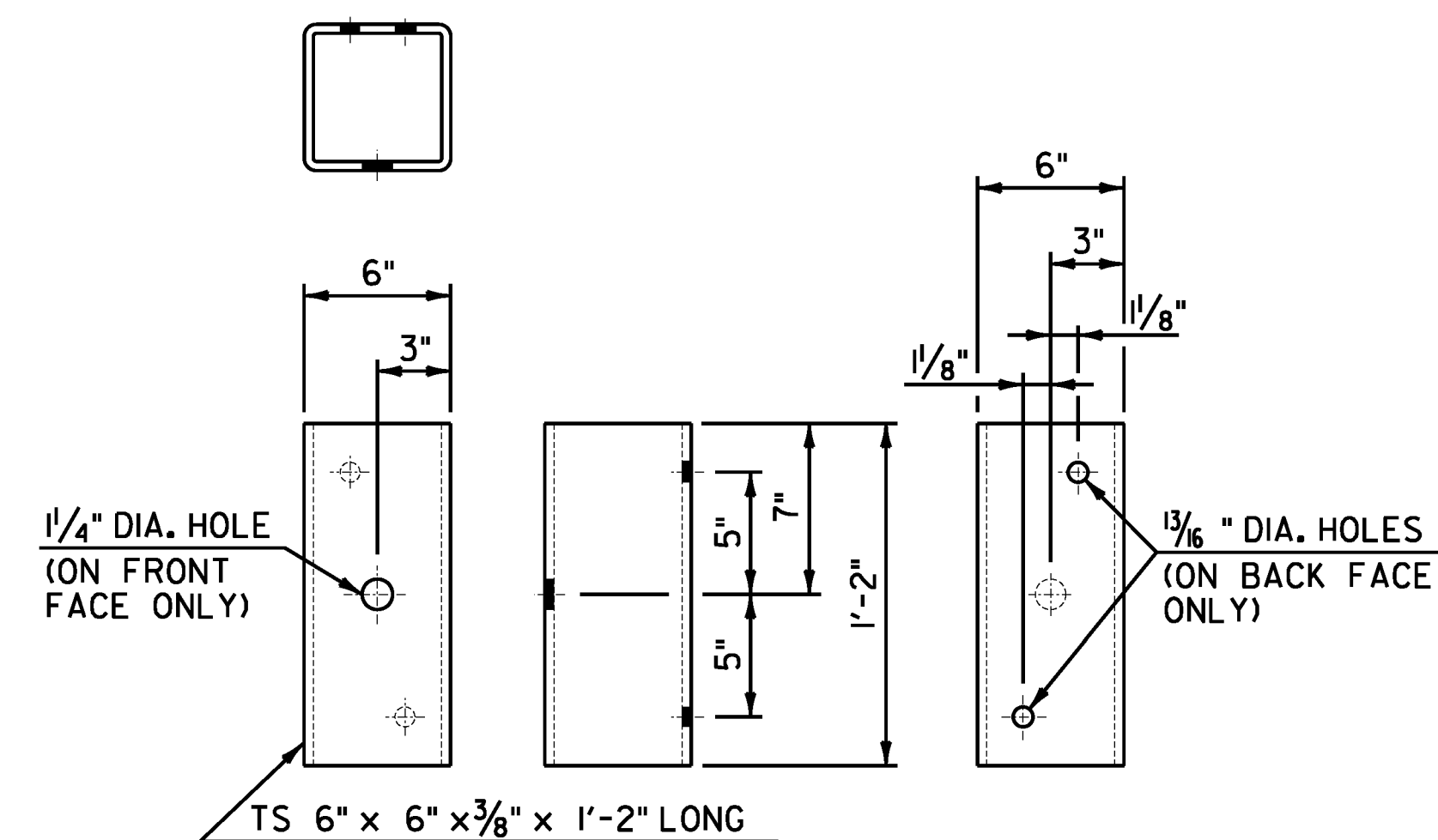


ANCHORAGE PLATE DETAIL

- NOTES**
- REFER TO VTRANS STANDARD G-1 FOR ADDITIONAL RAIL DETAILS.
 - ALL POSTS FOR HEAVY DUTY STEEL BEAM GUARDRAIL SHALL BE STEEL IN ACCORDANCE WITH SUBSECTION 728.01(c) UNLESS OTHERWISE SPECIFIED IN THE CONTRACT.
 - APPROACH RAIL SPLICES SHALL LAP IN DIRECTION OF TRAFFIC FLOW.
 - ANCHORAGE CONNECTOR AND ANCHORAGE PLATE SHALL CONFORM TO SUBSECTION 728.01(c).
 - ALL BOLTS, NUTS AND WASHERS SHALL CONFORM TO SUBSECTION 728.03(c).
 - STRUCTURAL TUBING OFFSET BLOCK SHALL CONFORM TO SUBSECTION 728.01(c).
 - APPROACH RAILING SHALL BE HEAVY DUTY STEEL BEAM FOR 50'-0" FROM THE Q OF POST #1 FOR TYPE I AND 12'-6" FROM THE Q OF POST #1 FOR TYPE II.
 - ALLOWABLE DIMENSIONAL TOLERANCE FOR BENT SECTIONS IS $\pm 1/16$ "
 - THE UNIT PRICES BID FOR EITHER TYPE OF GUARDRAIL APPROACH SECTION SHALL INCLUDE ANCHORAGE CONNECTOR, ANCHORAGE PLATE, HEAVY DUTY STEEL BEAM GUARDRAIL, POSTS, OFFSET BLOCKS, BLOCKING, BOLTS, AND ALL NECESSARY HARDWARE.



ANCHORAGE CONNECTOR DETAIL
(SEE NOTE 8)



STRUCTURAL TUBING OFFSET BLOCK DETAILS
(OCCURS AT POST #1 WHEN USING APPROACH RAIL UTILIZING STEEL POSTS)

NOT TO SCALE

GUARDRAIL APPROACH SECTION DETAIL SHEET #2

PROJECT NAME: WARREN - WAITSFIELD
 PROJECT NUMBER: STP 2506(1)
 FILE NAME: p05b048.dgn
 PROJECT LEADER: D.E.G.
 DESIGNED BY: M.J.M.
 IPARM FILE: p05b048gas2.i

PLOT DATE: 12/20/2012
 DRAWN BY: W.G.P.
 CHECKED BY: D.E.G.
 SHEET 303 OF 310

NOTE:

- REFERENCE THIS SHEET WITH SHEET 302 ALONG WITH SHEET 308 FOR BR 172 DETAILS.