

646.402 DURABLE 4 INCH WHITE LINE, THERMOPLASTIC OR
 646.403 DURABLE 4 INCH WHITE LINE, EPOXY PAINT OR
 646.404 DURABLE 4 INCH WHITE LINE, POLYUREA
 (ALL LINES WILL INCLUDE EDGE LINE BREAKS AND
 RADII FOR TOWN HIGHWAYS)
 WARREN:
 STA 214+50.00 - STA 220+50.00 LT & RT
 STA M 1+15.00 - STA M 2+60.00 LT & RT

646.412 DURABLE 4 INCH YELLOW LINE, THERMOPLASTIC OR
 646.413 DURABLE 4 INCH YELLOW LINE, EPOXY PAINT OR
 646.414 DURABLE 4 INCH YELLOW LINE, POLYUREA
 (ALL LINES WILL INCLUDE C/L BREAKS FOR
 TOWN HIGHWAYS) S=SOLID, D=DASHED
 WARREN:
 STA 214+50.00 - STA 220+50.00 LT C RT S - S
 STA M 1+19.00 - STA M 2+60.00 DOUBLE SOLID S - S
 STA 217+58.88 DOUBLE SOLID LT, TH-20

646.442 DURABLE 8 INCH WHITE LINE, THERMOPLASTIC
 646.443 DURABLE 8 INCH WHITE LINE, EPOXY PAINT
 646.444 DURABLE 8 INCH WHITE LINE, POLYUREA
 WARREN:
 STA 217+09.00 - STA 217+21.00 FIRE HYDRANT, NO PARKING ZONE, LT

646.602 TEMPORARY 4 INCH WHITE LINE, PAINT
 (ALL LINES WILL INCLUDE EDGE LINE BREAKS AND
 RADII FOR TOWN HIGHWAYS)
 WARREN:
 STA 214+50.00 - STA 220+50.00 LT & RT
 STA M 1+15.00 - STA M 2+60.00 LT & RT

646.612 TEMPORARY 4 INCH YELLOW LINE, PAINT
 (ALL LINES WILL INCLUDE C/L BREAKS FOR
 TOWN HIGHWAYS) S=SOLID, D=DASHED
 WARREN:
 STA 214+50.00 - STA 220+50.00 LT C RT S - S
 STA M 1+19.00 - STA M 2+60.00 DOUBLE SOLID S - S
 STA 217+58.88 DOUBLE SOLID LT, TH-20

646.482 DURABLE 24 INCH STOP BAR, THERMOPLASTIC OR
 646.483 DURABLE 24 INCH STOP BAR, EPOXY PAINT OR
 646.484 DURABLE 24 INCH STOP BAR, POLYUREA
 WARREN:
 STA 217+58.88 LT, TH-20
 STA M 1+20.01, LT

646.492 DURABLE LETTER OR SYMBOL, THERMOPLASTIC OR
 646.493 DURABLE LETTER OR SYMBOL, EPOXY PAINT OR
 646.494 DURABLE LETTER OR SYMBOL, POLYUREA
 WARREN:
 STA 217+58.88 LT, TH-20, "S,T,O,P" (4 EA)
 STA M 1+24.01, LT, "S,T,O,P" (4 EA)

646.682 TEMPORARY 24 INCH STOP BAR, PAINT
 WARREN:
 STA 217+58.88 LT, TH-20
 STA M 1+20.01, LT

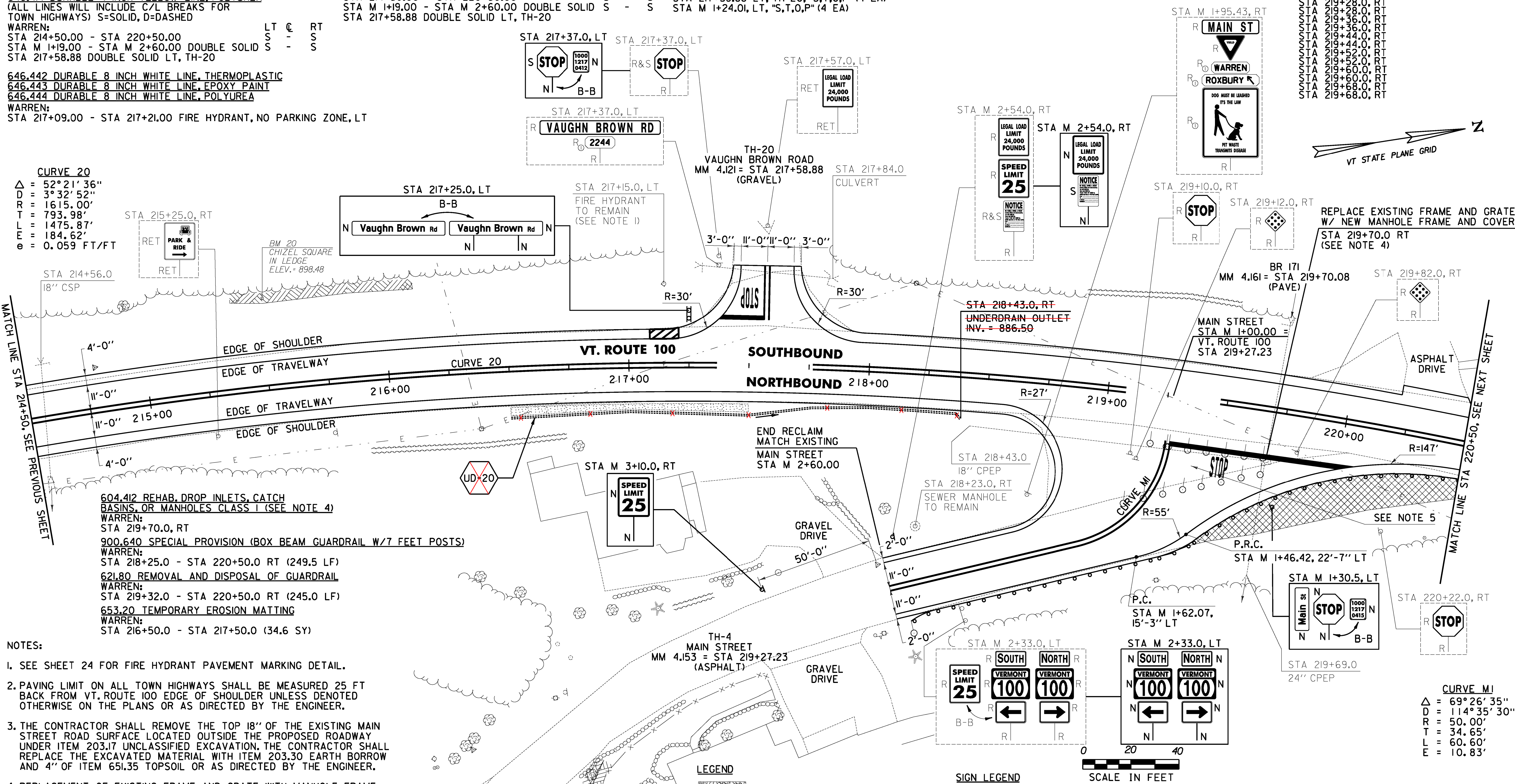
646.692 TEMPORARY LETTER OR SYMBOL, PAINT
 WARREN:
 STA 217+58.88 LT, TH-20, "S,T,O,P" (8 EA)
 STA M 1+24.01, LT, "S,T,O,P" (8 EA)

675.50 REMOVING SIGNS
 AS SHOWN - 22

675.60 ERECTING SALVAGED SIGNS
 AS SHOWN - 2

675.12 REMOVAL OF EXISTING DELINEATOR
 WARREN:
 STA 219+12.0, RT
 STA 219+20.0, RT
 STA 219+20.0, RT
 STA 219+27.0, RT
 STA 219+28.0, RT
 STA 219+36.0, RT
 STA 219+36.0, RT
 STA 219+44.0, RT
 STA 219+44.0, RT
 STA 219+52.0, RT
 STA 219+52.0, RT
 STA 219+60.0, RT
 STA 219+60.0, RT
 STA 219+68.0, RT
 STA 219+68.0, RT

CURVE 20
 $\Delta = 52^\circ 21' 36''$
 $D = 3^\circ 32' 52''$
 $R = 1615.00'$
 $T = 793.98'$
 $L = 1475.87'$
 $E = 184.62'$
 $e = 0.059 \text{ FT/FT}$



604.412 REHAB. DROP INLETS, CATCH BASINS, OR MANHOLES CLASS I (SEE NOTE 4)
 WARREN:
 STA 219+70.0, RT
 900.640 SPECIAL PROVISION (BOX BEAM GUARDRAIL W/7 FEET POSTS)
 WARREN:
 STA 218+25.0 - STA 220+50.0 RT (249.5 LF)
 621.80 REMOVAL AND DISPOSAL OF GUARDRAIL
 WARREN:
 STA 219+32.0 - STA 220+50.0 RT (245.0 LF)
 653.20 TEMPORARY EROSION MATTING
 WARREN:
 STA 216+50.0 - STA 217+50.0 (34.6 SY)

NOTES:

- SEE SHEET 24 FOR FIRE HYDRANT PAVEMENT MARKING DETAIL.
- PAVING LIMIT ON ALL TOWN HIGHWAYS SHALL BE MEASURED 25 FT BACK FROM VT. ROUTE 100 EDGE OF SHOULDER UNLESS DENOTED OTHERWISE ON THE PLANS OR AS DIRECTED BY THE ENGINEER.
- THE CONTRACTOR SHALL REMOVE THE TOP 18" OF THE EXISTING MAIN STREET ROAD SURFACE LOCATED OUTSIDE THE PROPOSED ROADWAY UNDER ITEM 203.17 UNCLASSIFIED EXCAVATION. THE CONTRACTOR SHALL REPLACE THE EXCAVATED MATERIAL WITH ITEM 203.30 EARTH BORROW AND 4" OF ITEM 651.35 TOPSOIL OR AS DIRECTED BY THE ENGINEER.
- REPLACEMENT OF EXISTING FRAME AND GRATE WITH MANHOLE FRAME AND COVER SHALL BE PAID FOR UNDER THE REHABILITATION ITEM AS DIRECTED BY THE ENGINEER.
- THE CONTRACTOR SHALL FIELD VERIFY THAT THE DEPTH OF ROAD BED BENEATH THE EXISTING ISLAND IS ADEQUATE FOR RECLAIMING PRIOR TO ANY WORK BEING PERFORMED ON MAIN STREET. IF THE MATERIAL IS INADEQUATE THE CONTRACTOR SHALL EXCAVATE 18" UNDER ITEM 203.17 UNCLASSIFIED EXCAVATION AND PLACE 18" OF ITEM 301.28 SUBBASE OF CRUSHED GRAVEL, FINE GRADED OR AS DIRECTED BY THE ENGINEER.

LEGEND

- ITEM 613.10 STONE FILL, TYPE I
- ITEM 653.20 TEMPORARY EROSION MATTING
- EXISTING PAVEMENT TO BE REMOVED (SEE NOTE 3)

SIGN LEGEND

- R = REMOVE
- S = SALVAGE
- N = NEW
- RET = RETAIN
- B-B = BACK TO BACK
- EXISTING = _____
- NEW = _____
- ⊙ = RETURN TO THE TOWN OF WARREN

SCALE IN FEET

PROJECT LAYOUT SHEET #32

PROJECT NAME: WARREN - WAITSFIELD

PROJECT NUMBER: STP 2506(1)

FILE NAME: p05b048.dgn

PROJECT LEADER: D.E.G.

DESIGNED BY: M.J.M.

IPARM FILE: p05b048i32.1

PLOT DATE: 12/20/2012

DRAWN BY: W.G.P.

CHECKED BY: D.E.G.

SHEET 58 OF 310