

TRAVERSE TIES

HVCTRL #49

IRASVILLE AZ  
NORTH = 608604.820  
EAST = 1553434.080  
ELEV. = 740.940

DESCRIBED BY VERMONT AGENCY OF TRANSPORTATION 1996 (DJM) GENERAL LOCATION, WAITSFIELD, ABOUT 1 MI (1.6 KM) SOUTH OF IRASVILLE VILLAGE. TO REACH FROM THE JCT OF RTE 100 AND 17 IN IRASVILLE VILLAGE GO SOUTH ALONG RTE 100 FOR 1.0 MI (1.6 KM) TO THE SITE OF THE ROAD, NORTH OF A GRAVEL DRIVE. OWNERSHIP, STATE OF VERMONT. STATION MARK IS A STATE OF VERMONT SURVEY MARK DISK SET IN THE TOP OF A 30-CM DIAMETER CONCRETE MONUMENT FLUSH WITH GROUND SURFACE. IT IS 18.5 FT (5.6 M) EAST OF THE CENTERLINE OF RTE 100, 41 FT (12.5 M) EAST OF POLE NO.23, 62 FT (18.9 M) NORTH OF THE NORTHWEST CORNER OF A 1.5 STORY WOOD FRAME HOUSE.

HVCTRL #50

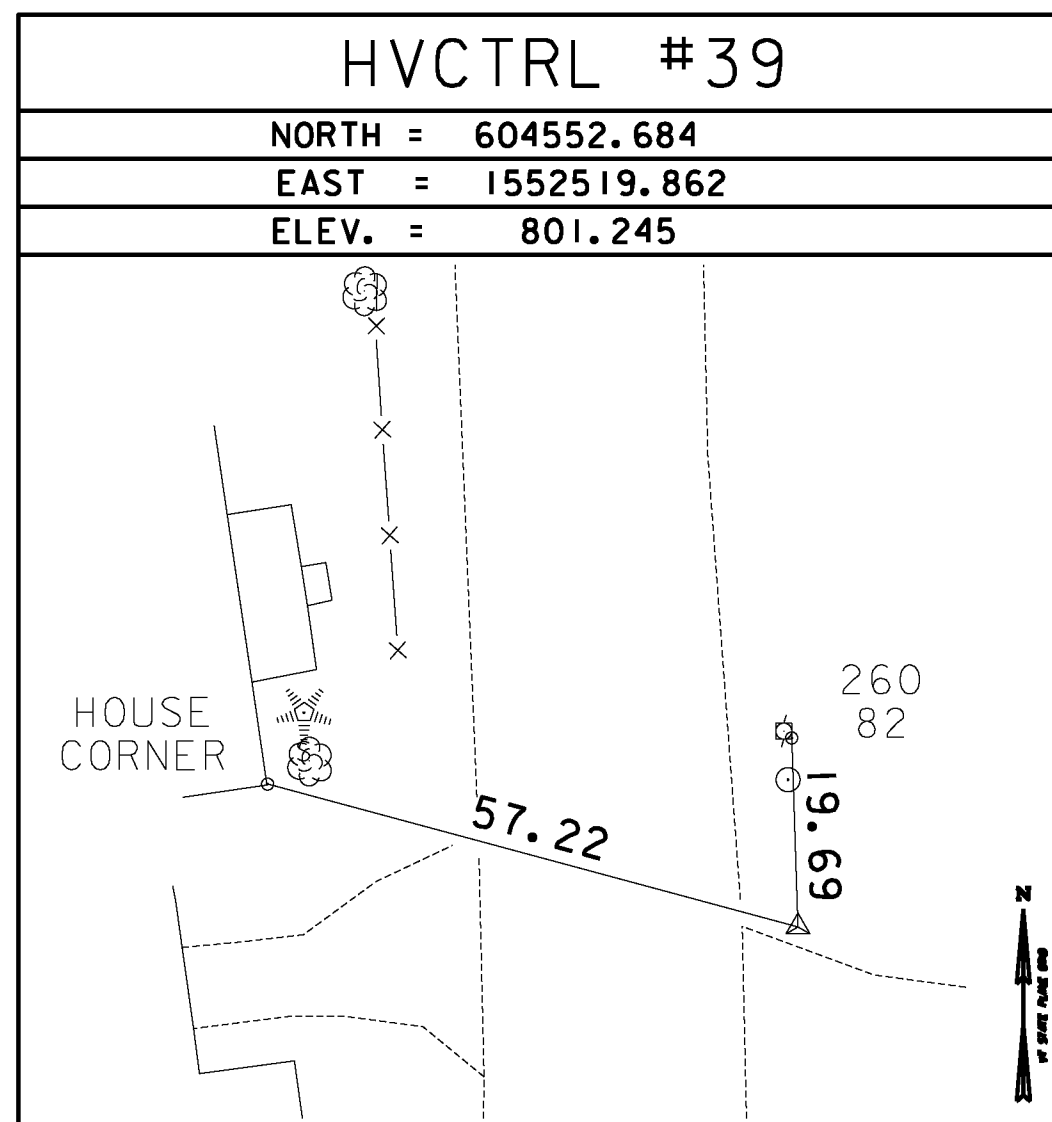
IRASVILLE  
NORTH = 610915.770  
EAST = 1552896.780  
ELEV. = 724.740

DESCRIBED BY VERMONT AGENCY OF TRANSPORTATION 1996 (DJM) GENERAL LOCATION, WAITSFIELD, ABOUT 0.6 MI (1.0 KM) SOUTH OF THE VILLAGE OF IRASVILLE. TO REACH FROM THE JCT OF RTE 100 AND RTE 17 IN THE VILLAGE OF IRASVILLE GO SOUTH ALONG RTE 100 FOR ABOUT 0.6 MI (1.0 KM) TO THE SITE OF MARK ON THE EAST SIDE OF THE ROAD. OWNERSHIP, STATE OF VERMONT STATION MARK, A STATE OF VERMONT SURVEY MARK DISK SET IN THE TOP OF A 30-CM DIAMETER CONCRETE MONUMENT FLUSH WITH GROUND SURFACE. IT IS 21.5 FT (6.6 M) EAST OF THE CENTERLINE OF RTE 100, 30 FT (9.1 M) NORTH OF A REDUCED SPEED AHEAD SIGN, 75 FT (22.9 M) SOUTH OF THE CENTERLINE OF A GRAVEL DRIVE, 96 FT (29.3 M) SOUTH OF GUY POLE NO.223.

TRAVERSE TIES

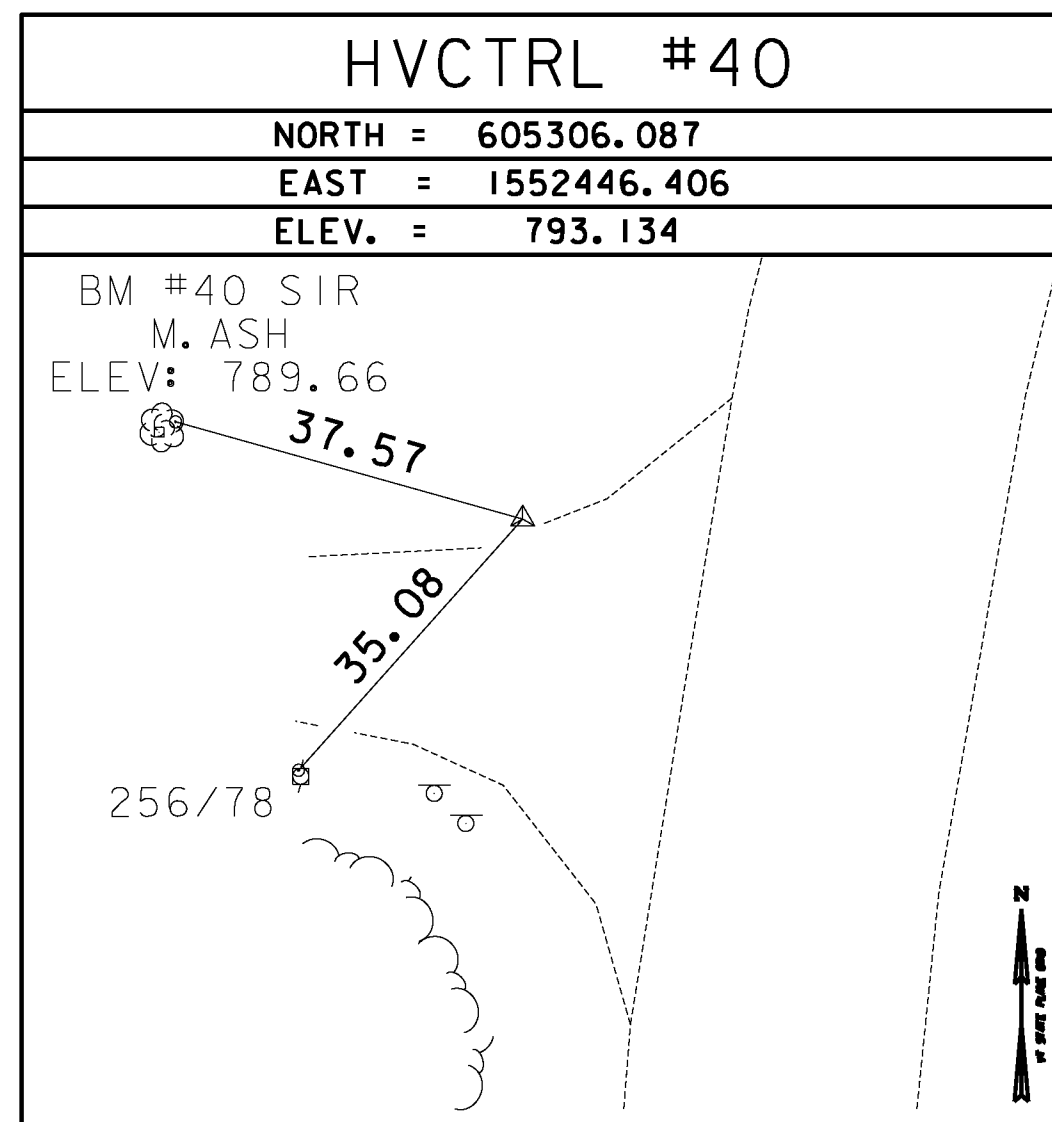
HVCTRL #39

NORTH = 604552.684  
EAST = 1552519.862  
ELEV. = 801.245



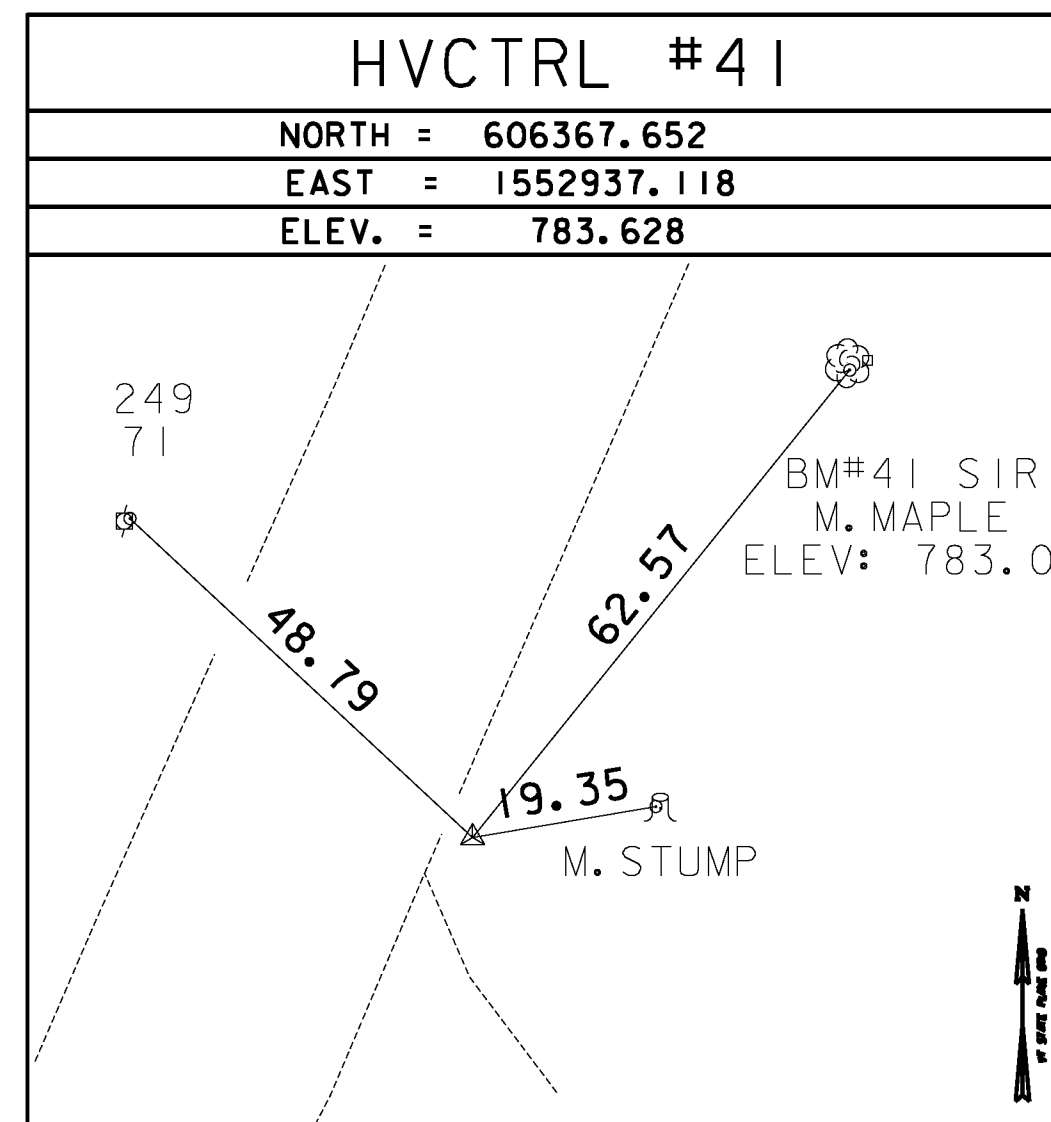
HVCTRL #40

NORTH = 605306.087  
EAST = 1552446.406  
ELEV. = 793.134



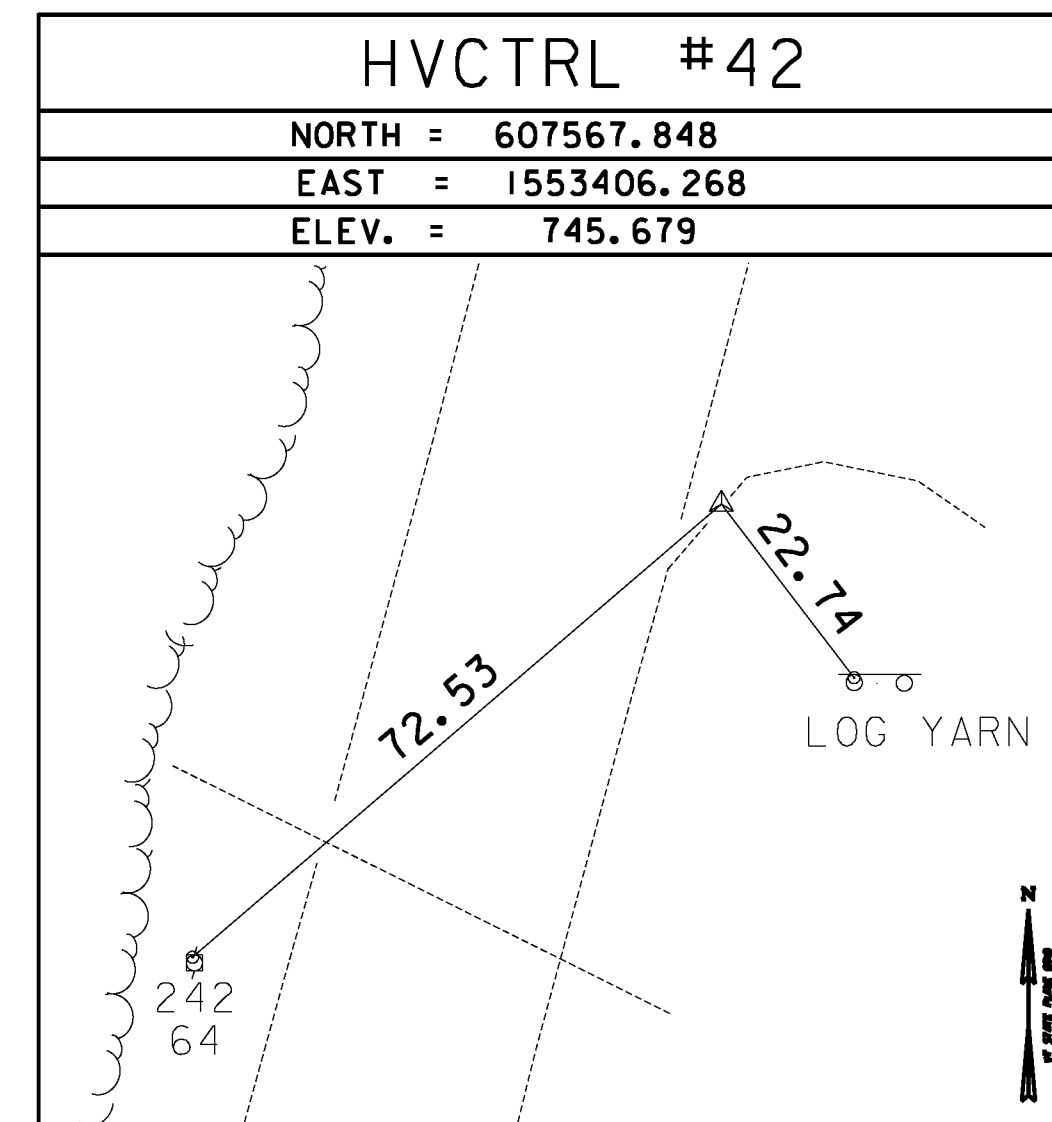
HVCTRL #41

NORTH = 606367.652  
EAST = 1552937.118  
ELEV. = 783.628



HVCTRL #42

NORTH = 607567.848  
EAST = 1553406.268  
ELEV. = 745.679



NORTH =  
EAST =  
ELEV. =

TRAVERSE TIES

NORTH =  
EAST =  
ELEV. =

NORTH =  
EAST =  
ELEV. =

NORTH =  
EAST =  
ELEV. =

NORTH =  
EAST =  
ELEV. =

NORTH =  
EAST =  
ELEV. =

FILE NAME = U:\1762\CADD\N\STN\STP\_2506\p05b048\_Conv-eat\_Plenadgn  
DATE/TIME = 12/20/2012  
USER = 4866

DATUM	
VERTICAL	NAVD 88
HORIZONTAL	NAD (96)
ADJUSTMENT	COMPASS

NOT TO SCALE

TIE SHEET #4

PROJECT NAME: WARREN - WAITSFIELD  
PROJECT NUMBER: STP 2506(1)

FILE NAME: p05b048.dgn  
PROJECT LEADER: D.E.G.  
DESIGNED BY: M.J.M.  
IPARM FILE: p05b048b1t4.1

PLOT DATE: 12/20/2012  
DRAWN BY: W.G.P.  
CHECKED BY: D.E.G.  
SHEET 6 OF 310