

GPS CONTROL POINTS

HVCTRL #1

TWIN RIVERS
 NORTH = 575426.066
 EAST = 1546006.782
 ELEV. = 1084.389

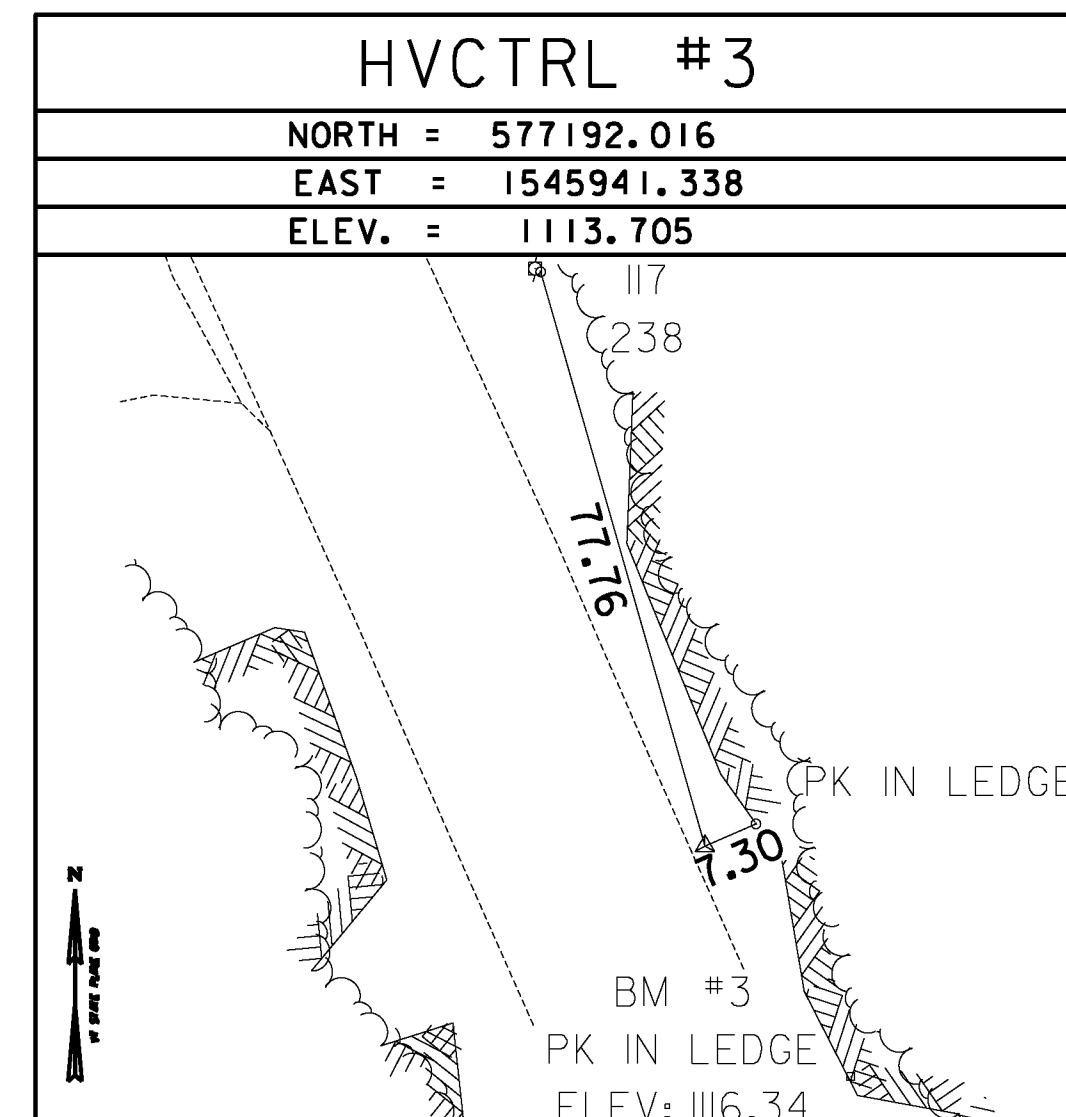
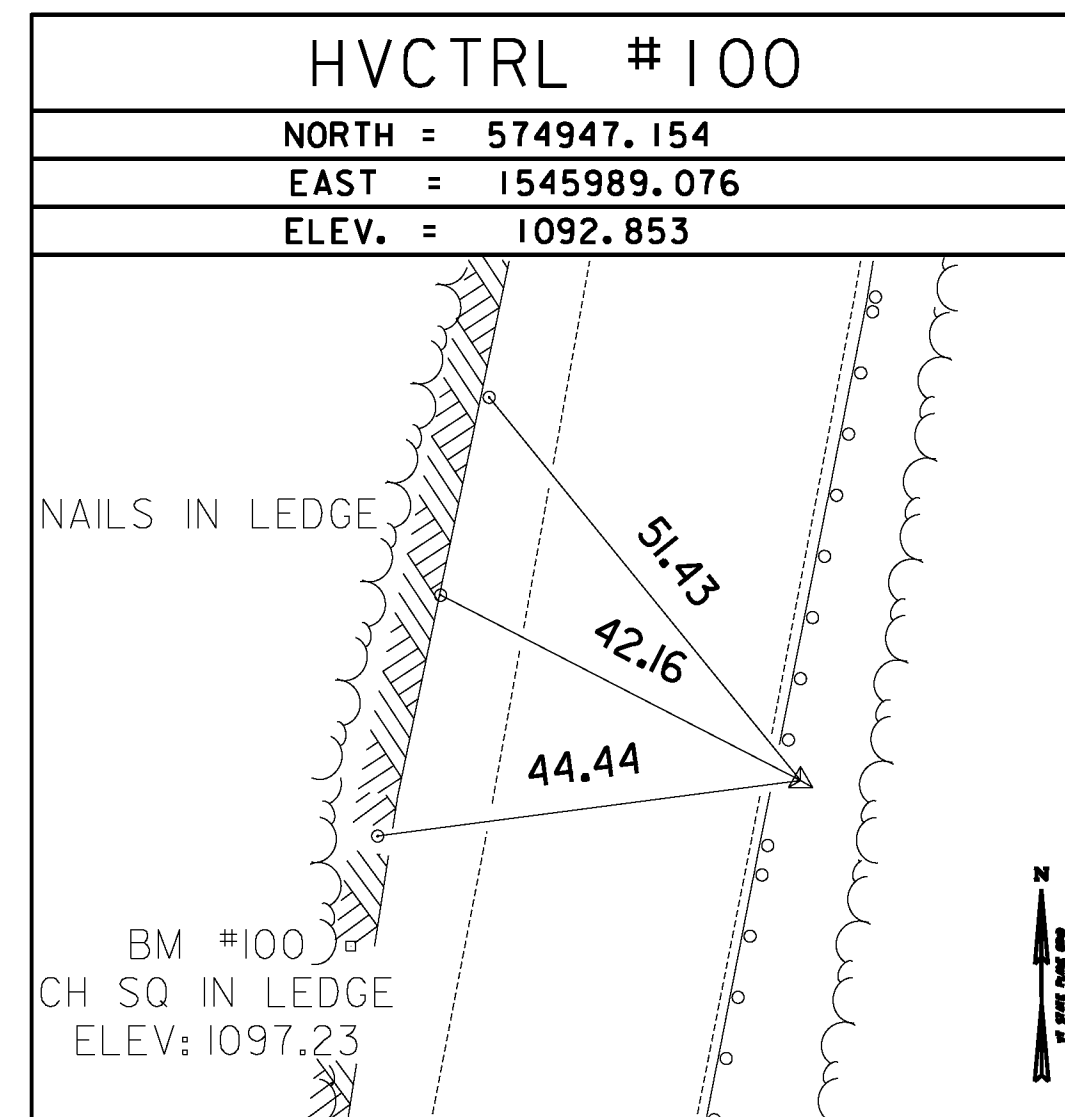
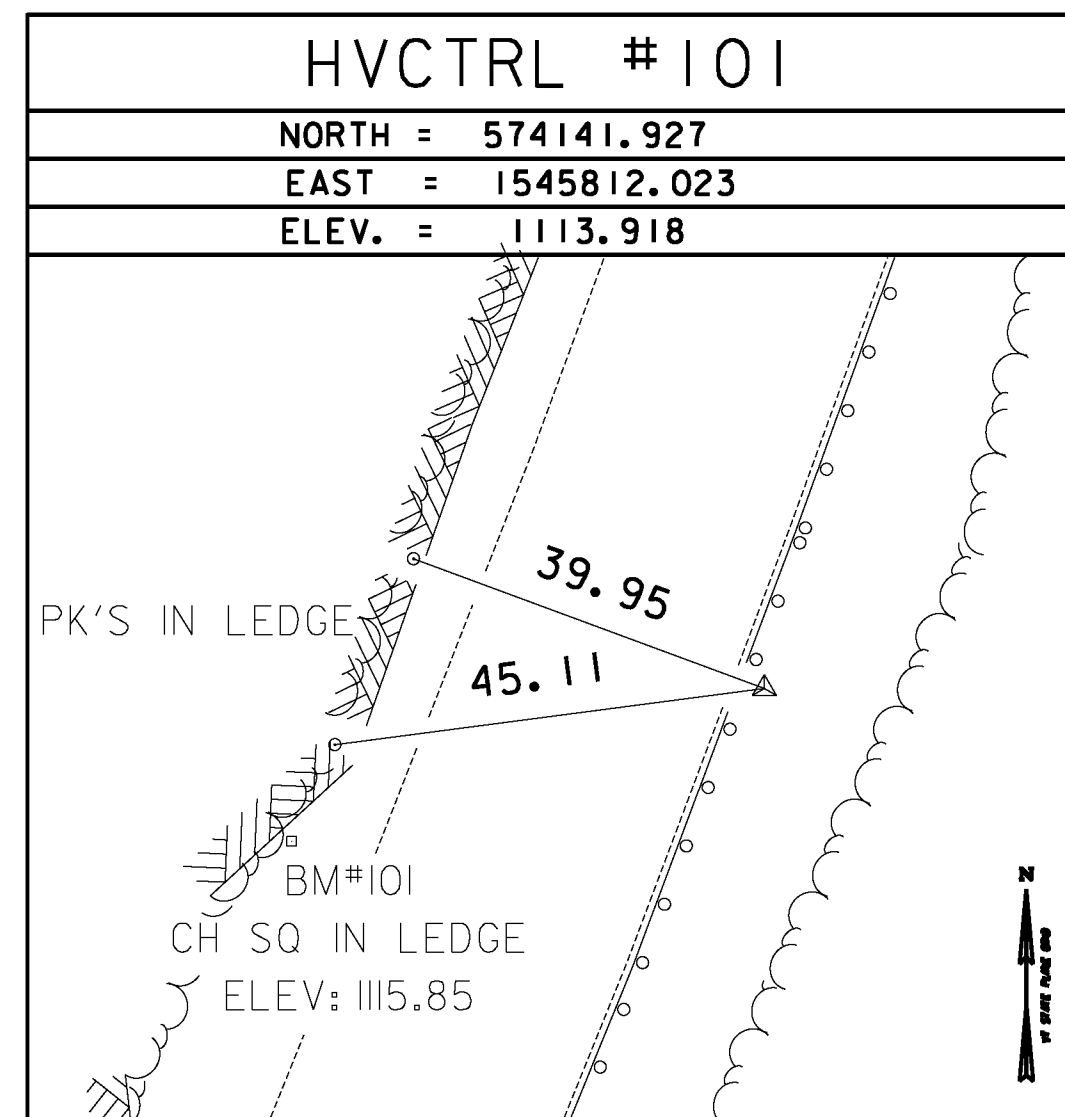
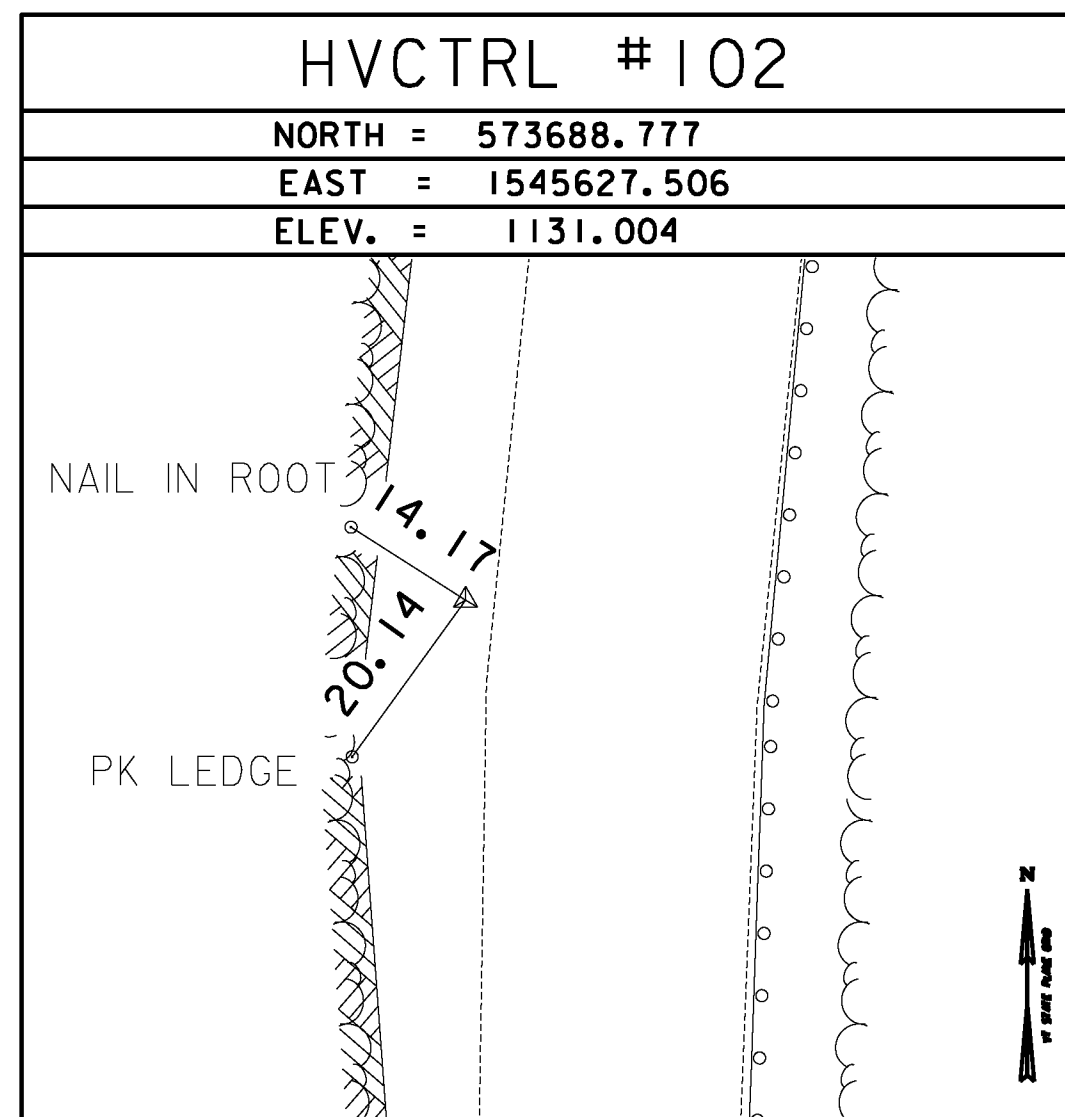
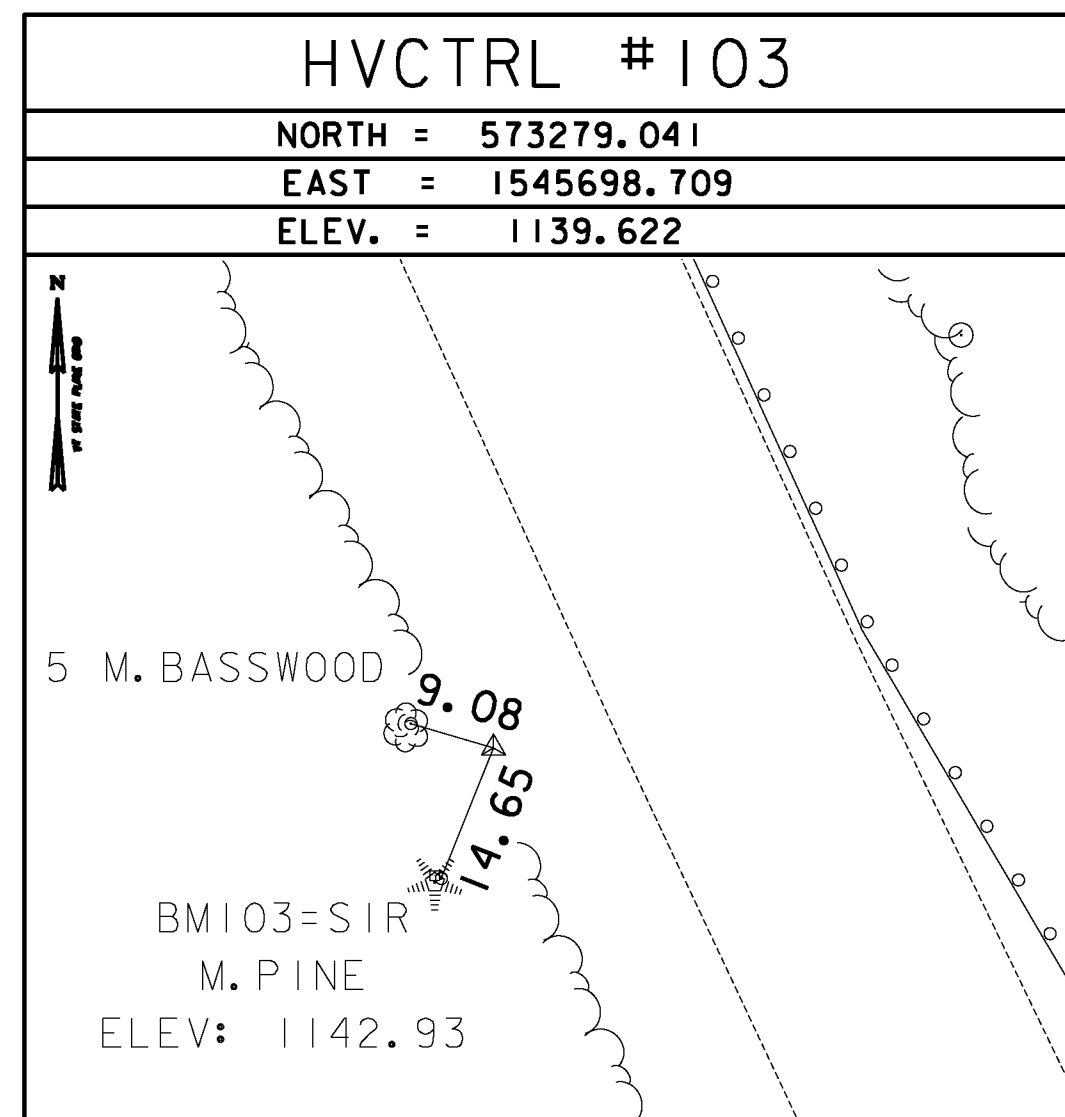
GENERAL LOCATION, WARREN, VERMONT. TO REACH FROM THE INTERSECTION OF VERMONT ROUTES 100 AND 17 IN WAITSFIELD GO SOUTH ALONG ROUTE 100 FOR 7.6 MI (12.2 KM) TO THE MARK ON THE RIGHT. THE MARK IS SET FLUSH WITH THE GROUND SURFACE IN THE TOP OF A 30 CM DIAMETER CONCRETE MONUMENT SET 1.4 M (4.6 FT) DEEP. IT IS 3.1 M (10.2 FT) WEST OF AND ABOUT 0.5 M (1.6 FT) LOWER THAN THE WEST EDGE OF PAVEMENT OF ROUTE 100, 17.0 M (55.8 FT) OF POLE NO.123, 13.7 M (44.9 FT) WEST OF MILE MARKER 1000/1217/0131, 29.0 M (95.1 FT) NORTH OF THE THE CENTERLINE OF A PAVED DRIVE, AND 3.1 M (10.2 FT) EAST OF A FIBERGLASS WITNESS POST.

HVCTRL #2

TWIN RIVERS AZ MK
 NORTH = 576661.636
 EAST = 1546135.985
 ELEV. = 1089.480

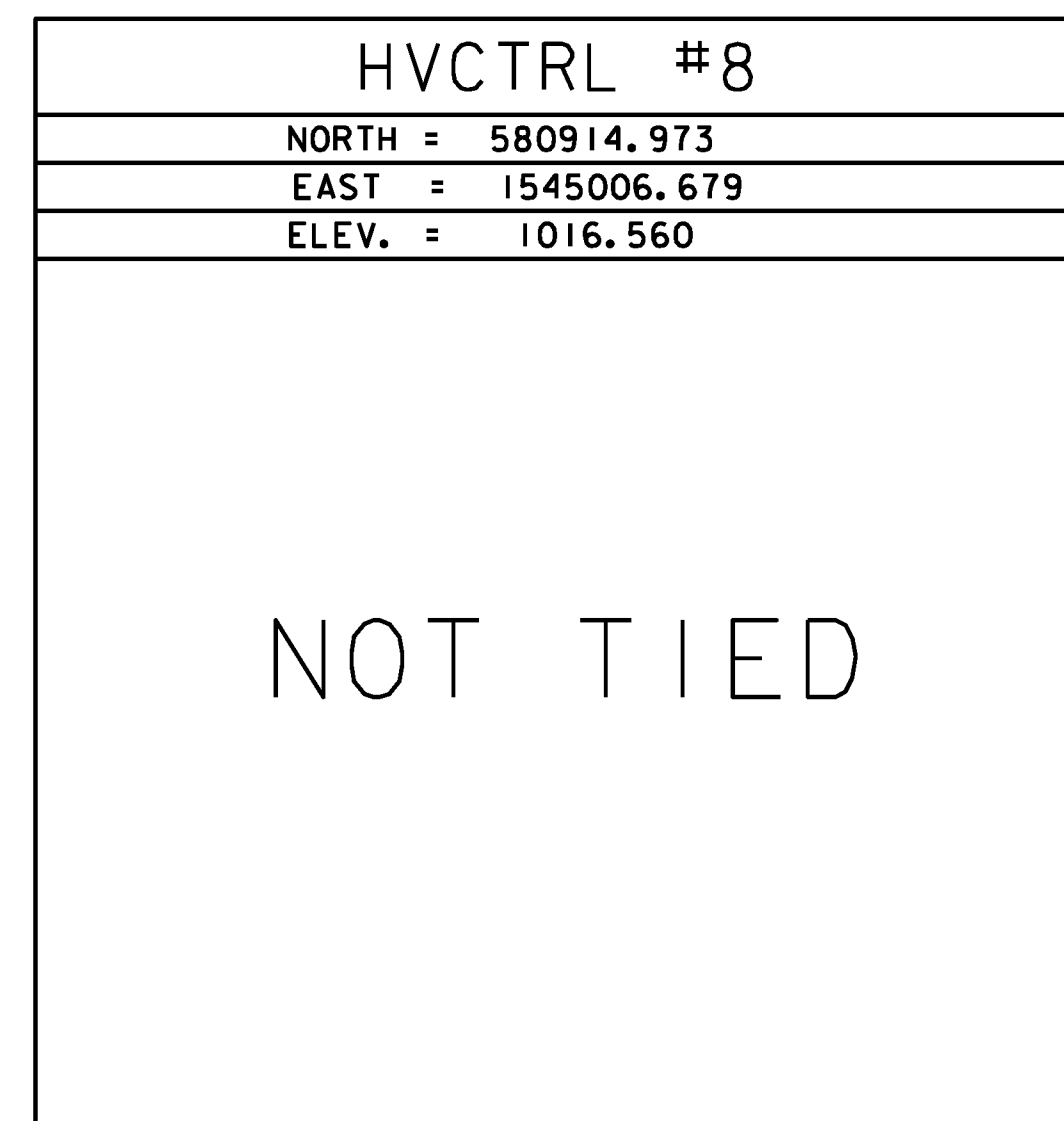
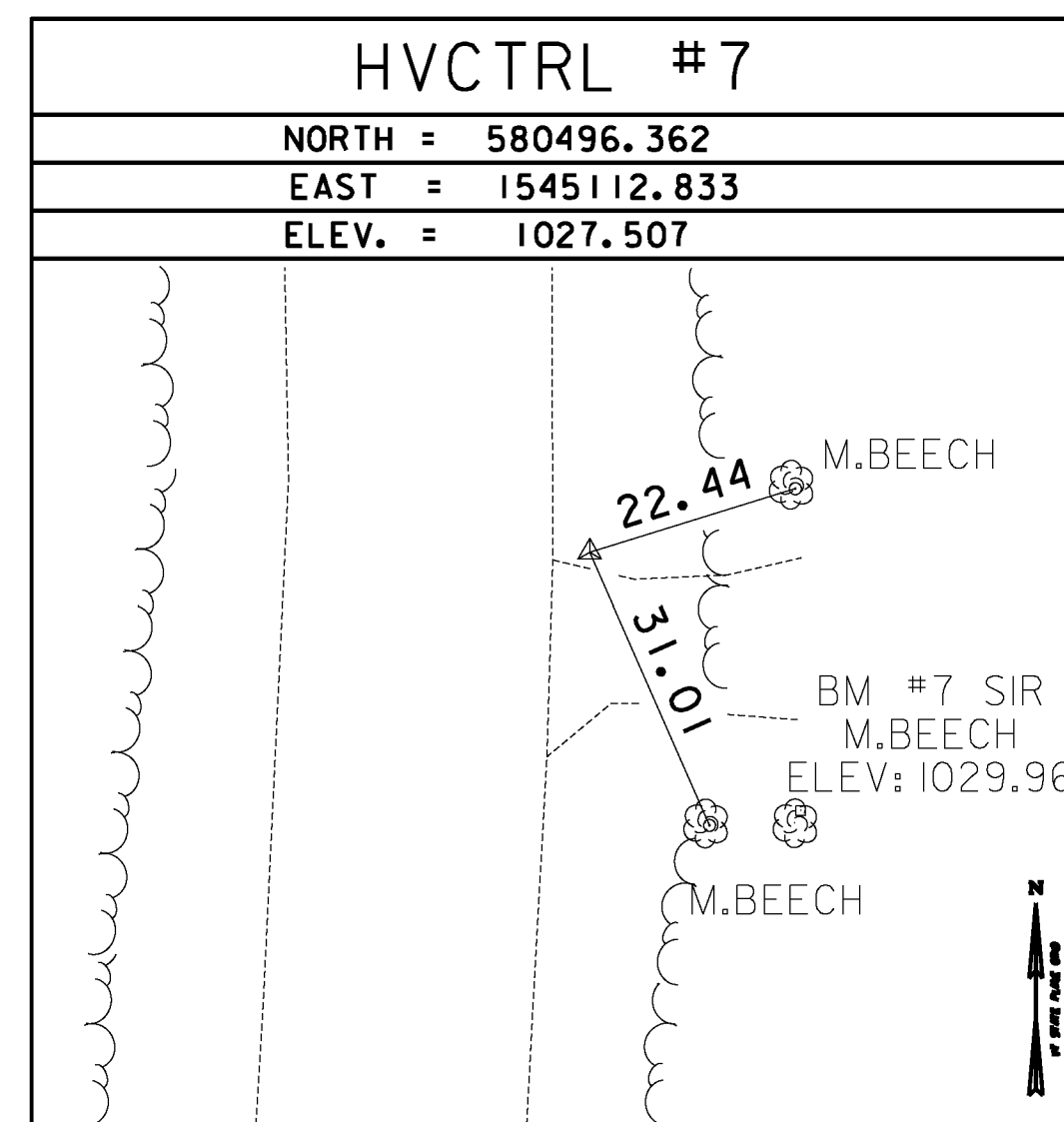
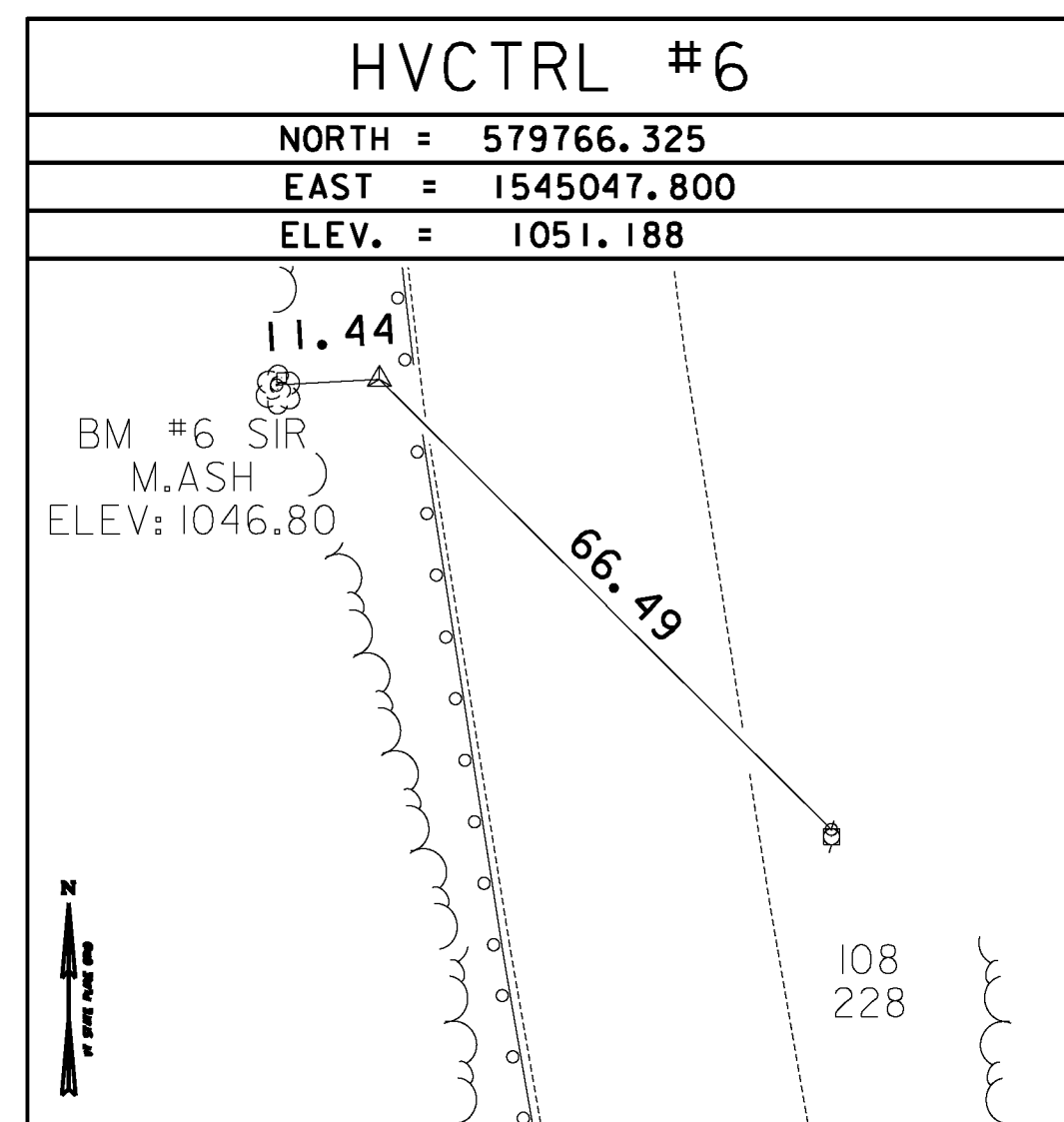
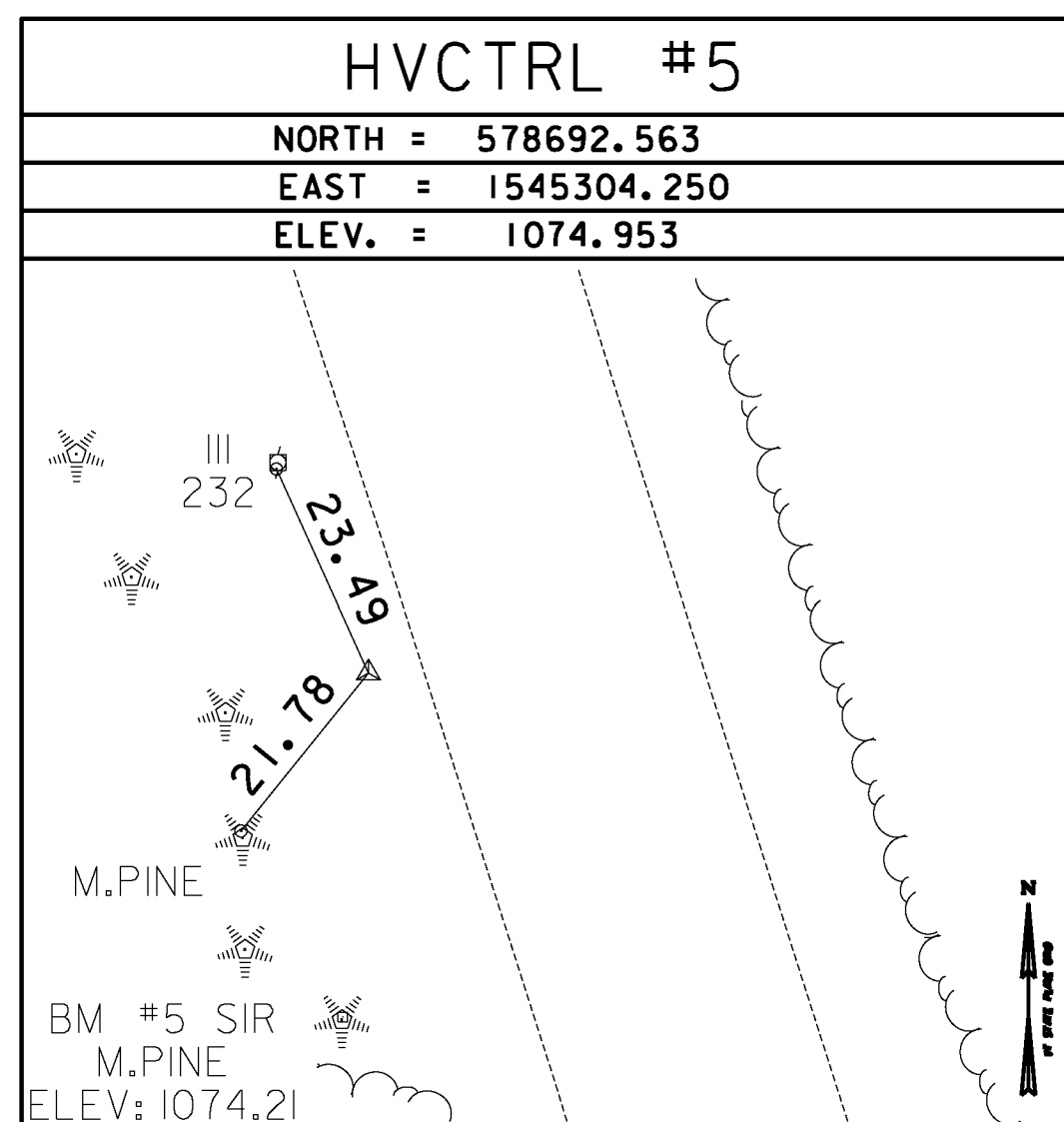
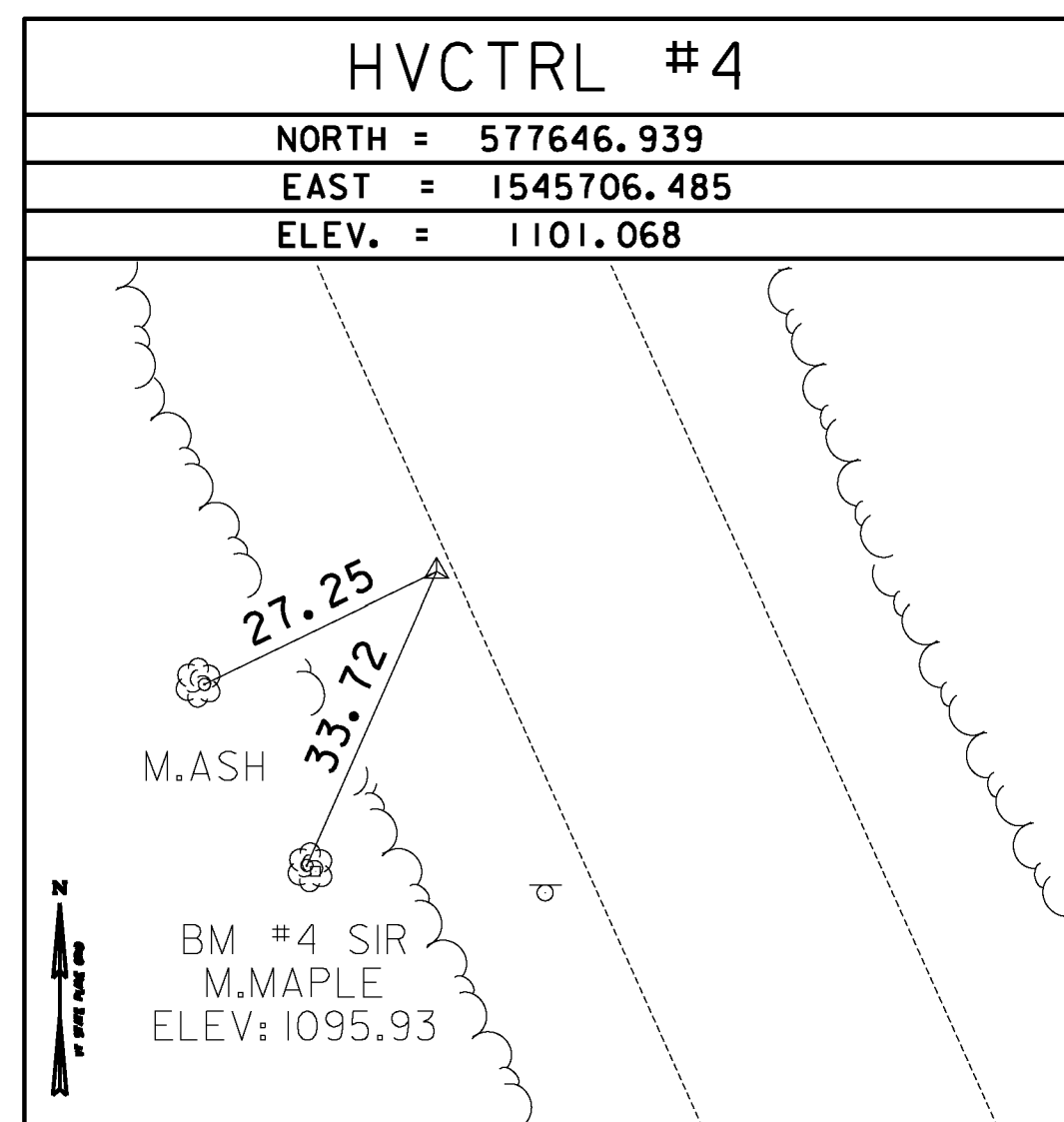
GENERAL LOCATION, WARREN, VERMONT. TO REACH FROM THE INTERSECTION OF VERMONT ROUTES 100 AND 17 IN WAITSFIELD GO SOUTH ALONG ROUTE 100 FOR 7.35 MI (11.83 KM) TO THE MARK ON THE LEFT. THE MARK IS SET FLUSH WITH THE GROUND SURFACE IN THE TOP OF A 30 CM DIAMETER CONCRETE MONUMENT SET 1.3 M (4.3 FT) DEEP. IT IS 4.7 M (15.4 FT) EAST OF AND ABOUT 0.5 M (1.6 FT) HIGHER THAN THE EAST EDGE OF PAVEMENT OF ROUTE 100, 7.2 M (23.6 FT) WEST THE CENTERLINE OF A GRAVEL ROAD, 9.2 M (30.2 FT) NORTH OF POLE NO.119, AND 5.2 M (17.1 FT) NORTH OF A 15 CM WHITE BIRCH AND A FIBERGLASS WITNESS POST.

TRAVERSE TIES



*MAIN TRAVERSE COMPLETED 7/20/2010 BY R.GILMAN P.C. & P.WINTERS & R. BOCKUS & R. CAULK

TRAVERSE TIES



NOT TO SCALE

FILE NAME = U:\1762\CA00\N\STN\STP_2506\p05b048_Conv.eas_Plan.dgn
 DATE/TIME = 12/20/2012 10:46:56
 USER = dgg

DATUM	
VERTICAL	NAVD 88
HORIZONTAL	NAD (96)
ADJUSTMENT	COMPASS

TIE SHEET #1	PROJECT NAME:	WARREN - WAITSFIELD
	PROJECT NUMBER:	STP 2506(1)
	FILE NAME:	p05b048.dgn
	IPARM FILE:	p05b048b1.tl
	PROJECT LEADER:	D.E.G.
	DESIGNED BY:	M.J.M.
	PLOT DATE:	12/20/2012
	DRAWN BY:	W.G.P.
	CHECKED BY:	D.E.G.
	SHEET	3 OF 310