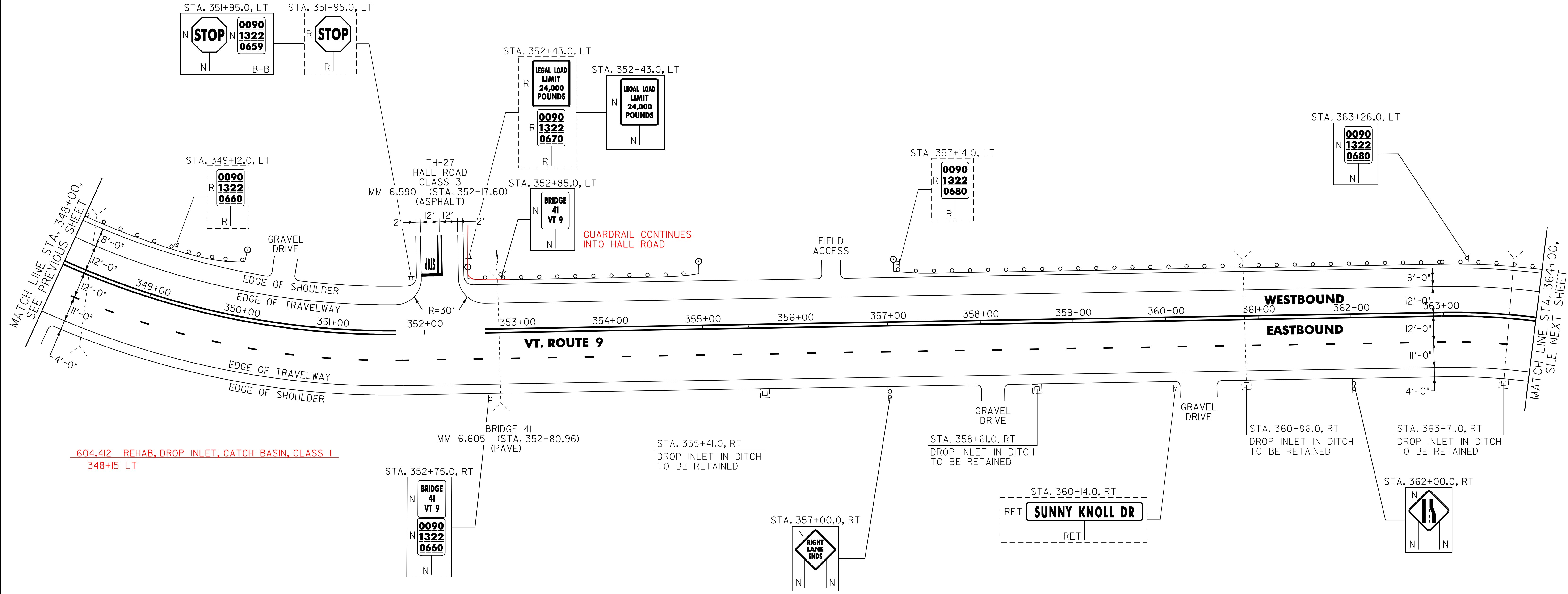


646.402 DURABLE 4 INCH WHITE LINE, THERMOPLASTIC  
(ALL LINES WILL INCLUDE EDGE LINE BREAKS AND RADIUS FOR TOWN HIGHWAYS)  
WILMINGTON:  
STA. 348+00.00 - STA. 364+00.00 EDGE LINE LT & RT  
STA. 348+00.00 - STA. 364+00.00 DASHED LINE RT  
646.412 DURABLE 4 INCH YELLOW LINE, THERMOPLASTIC  
(ALL LINES WILL INCLUDE C/L BREAKS FOR TOWN HIGHWAYS) S=SOLID, D=DASHED  
WILMINGTON:  
STA. 348+00.00 - STA. 364+00.00 LT S C RT S  
STA. 352+17.60 DOUBLE SOLID LT, TH-27

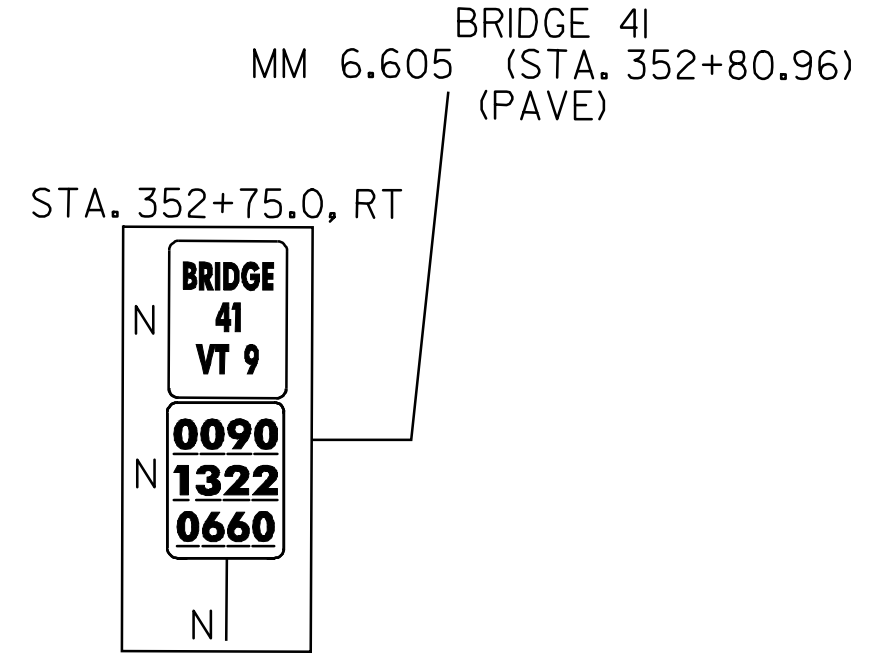
646.602 TEMPORARY 4 INCH WHITE LINE, PAINT  
(ALL LINES WILL INCLUDE EDGE LINE BREAKS AND RADIUS FOR TOWN HIGHWAYS)  
WILMINGTON:  
STA. 348+00.00 - STA. 364+00.00 EDGE LINE LT & RT  
STA. 348+00.00 - STA. 364+00.00 DASHED LINE RT  
646.612 TEMPORARY 4 INCH YELLOW LINE, PAINT  
(ALL LINES WILL INCLUDE C/L BREAKS FOR TOWN HIGHWAYS) S=SOLID, D=DASHED  
WILMINGTON:  
STA. 348+00.00 - STA. 364+00.00 LT S C RT S  
STA. 352+17.60 DOUBLE SOLID LT, TH-27

646.482 DURABLE 24 INCH STOP BAR, THERMOPLASTIC  
WILMINGTON:  
STA. 352+17.60 LT, TH-27  
646.682 TEMPORARY 24 INCH STOP BAR, PAINT  
WILMINGTON:  
STA. 352+17.60 LT, TH-27  
646.492 DURABLE LETTER OR SYMBOL, THERMOPLASTIC  
WILMINGTON:  
STA. 352+17.60, LT, TH-27 \*S,T,O,P\* (4 EA)  
646.692 TEMPORARY LETTER OR SYMBOL, PAINT  
WILMINGTON:  
STA. 352+17.60, LT, TH-27 \*S,T,O,P\* (4 EA)

675.50 REMOVING SIGNS  
AS SHOWN - 5



604.412 REHAB, DROP INLET, CATCH BASIN, CLASS 1  
348+15 LT

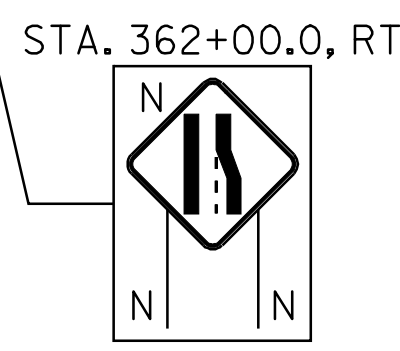
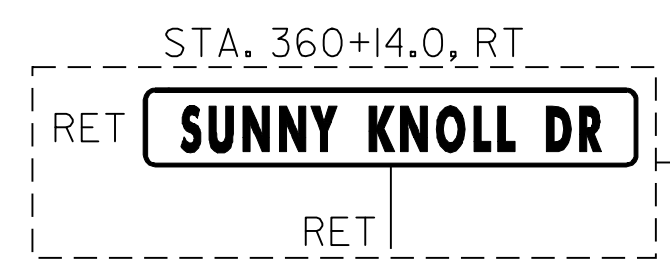
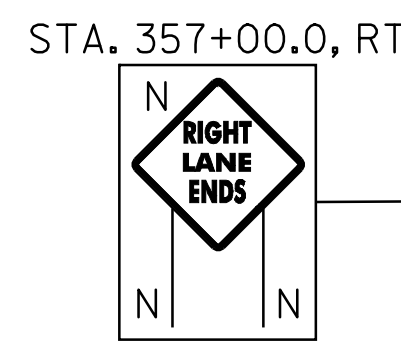


STA. 355+41.0, RT  
DROP INLET IN DITCH TO BE RETAINED

STA. 358+61.0, RT  
DROP INLET IN DITCH TO BE RETAINED

STA. 360+86.0, RT  
DROP INLET IN DITCH TO BE RETAINED

STA. 363+71.0, RT  
DROP INLET IN DITCH TO BE RETAINED



616.35 TREATED TIMBER CURB  
WILMINGTON: 348+96 144  
STA. 348+00.0 - STA. 349+61.0 LT (161.0 LF)  
621.20 STEEL BEAM GUARDRAIL, GALVANIZED  
WILMINGTON: 355+13 20.5 120.5  
STA. 348+00.0 - STA. 349+40.0 LT (140.0 LF)  
353+38 STA. 352+84.5 - STA. 354+59.5 LT (175.0 LF) 277  
358+10.5 STA. 357+49.5 - STA. 364+00.0 LT (650.5 LF) 589.5  
621.50 MANUFACTURED TERMINAL SECTION, FLARED  
WILMINGTON: 20.5 58  
STA. 349+40.0 - STA. 349+77.5 LT  
355+13 STA. 352+47.0 - STA. 352+84.5 LT  
STA. 354+59.5 - STA. 354+97.0 LT 355+50.5 LT  
STA. 357+42.0 - STA. 357+49.5 LT  
70 358+10.5 LT

621.80 REMOVAL AND DISPOSAL OF GUARDRAIL  
WILMINGTON:  
STA. 348+00.0 - STA. 349+76.0 LT (176.0 LF)  
STA. 352+49.0 - STA. 354+95.0 LT (246.0 LF)  
STA. 357+14.0 - STA. 364+00.0 LT (686.0 LF)  
676.10 DELINEATOR WITH STEEL POST  
♀ TYPE I WHITE  
WILMINGTON:  
STA. 349+77.5 LT  
STA. 352+47.0 LT  
STA. 354+97.0 LT  
STA. 357+12.0 LT

621.60 ANCHOR FOR STEEL BEAM GUARDRAIL  
353+38 LT (1EA.)  
HALL ROAD (1EA.)

NOTE:  
I. PAVING LIMIT ON ALL TOWN HIGHWAYS SHALL BE MEASURED 25 FT BACK FROM VT. ROUTE 9 EDGE OF SHOULDER UNLESS DENOTED OTHERWISE ON THE PLANS OR AS DIRECTED BY THE RESIDENT ENGINEER.

SIGN LEGEND  
R = REMOVE  
S = SALVAGE  
N = NEW  
RET = RETAIN  
B-B = BACK TO BACK  
EXISTING = - - - - -  
NEW = \_\_\_\_\_

<b>PROJECT LAYOUT SHEET #19</b>	NOT TO SCALE	
	PROJECT NAME: WILMINGTON	PLOT DATE: 23-AUG-2010 14
	PROJECT NUMBER: AC_NH_2504(1)S	DRAWN BY: C.A.K.
	FILE NAME: p05b044.dgn_	CHECKED BY: D.W.E.
	PROJECT LEADER: D.E.G.	SHEET 38 OF 125
	DESIGNED BY: M.J.M.	
	IPARM FILE: p05b04419.i	