

646.402 DURABLE 4 INCH WHITE LINE, THERMOPLASTIC
(ALL LINES WILL INCLUDE EDGE LINE BREAKS AND RADIUS FOR TOWN HIGHWAYS)

WILMINGTON:
STA. 268+00.00 - STA. 284+00.00 EDGE LINE LT & RT
STA. 282+40.00 - STA. 284+00.00 DASHED LANE LINE RT

646.412 DURABLE 4 INCH YELLOW LINE, THERMOPLASTIC
(ALL LINES WILL INCLUDE C/L BREAKS FOR TOWN HIGHWAYS) S=SOLID, D=DASHED

WILMINGTON:
STA. 268+00.00 - STA. 271+92.00 LT C RT
STA. 271+92.00 - STA. 284+00.00 D S S
STA. 272+44.80 DOUBLE SOLID RT, TH-40

646.482 DURABLE 24 INCH STOP BAR, THERMOPLASTIC

WILMINGTON:
STA. 272+44.80 RT, TH-40

646.682 TEMPORARY 24 INCH STOP BAR, PAINT

WILMINGTON:
STA. 272+44.80 RT, TH-40

646.602 TEMPORARY 4 INCH WHITE LINE, PAINT
(ALL LINES WILL INCLUDE EDGE LINE BREAKS AND RADIUS FOR TOWN HIGHWAYS)

WILMINGTON:
STA. 268+00.00 - STA. 284+00.00 EDGE LINE LT & RT
STA. 282+40.00 - STA. 284+00.00 DASHED LANE LINE RT

646.612 TEMPORARY 4 INCH YELLOW LINE, PAINT
(ALL LINES WILL INCLUDE C/L BREAKS FOR TOWN HIGHWAYS) S=SOLID, D=DASHED

WILMINGTON:
STA. 268+00.00 - STA. 271+92.00 LT C RT
STA. 271+92.00 - STA. 284+00.00 D S S
STA. 272+44.80 DOUBLE SOLID RT, TH-40

646.492 DURABLE LETTER OR SYMBOL, THERMOPLASTIC

WILMINGTON:
STA. 272+44.80 RT, TH-40 *S,T,O,P* (4 EA)

646.692 TEMPORARY LETTER OR SYMBOL, PAINT

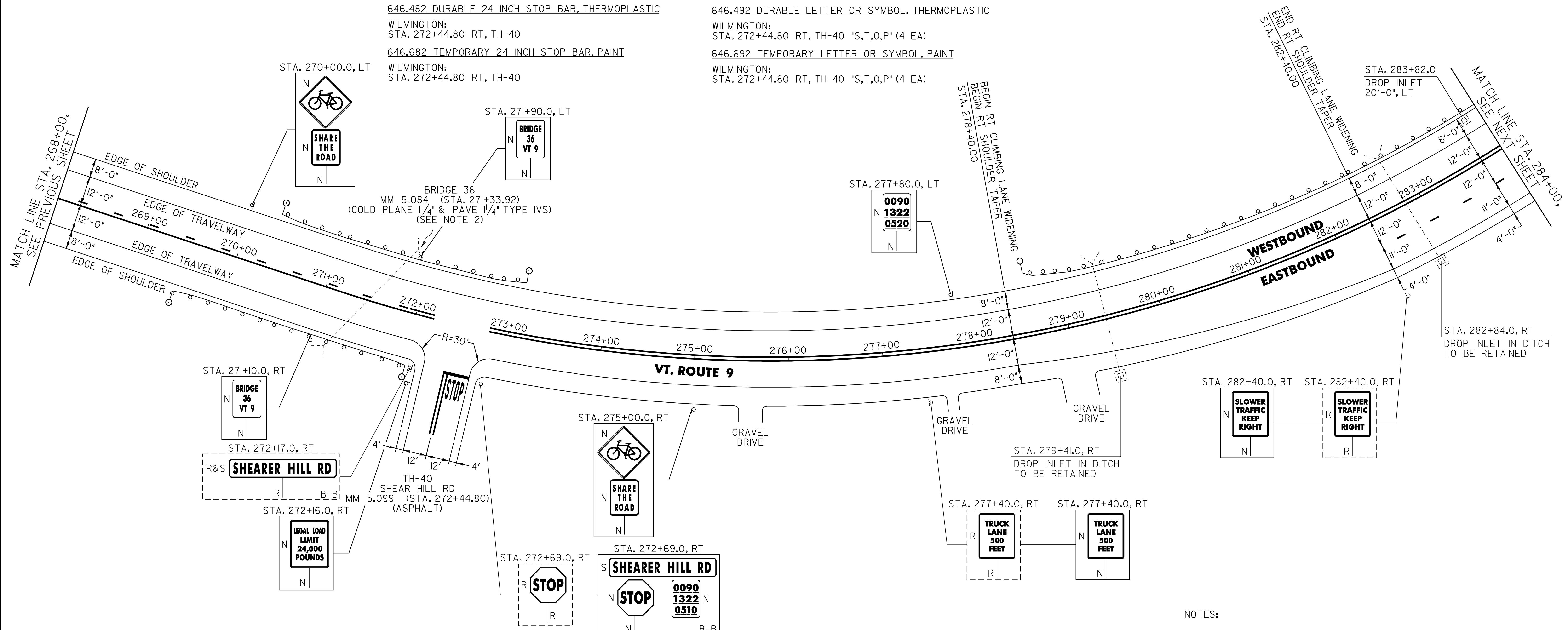
WILMINGTON:
STA. 272+44.80 RT, TH-40 *S,T,O,P* (4 EA)

675.50 REMOVING SIGNS

AS SHOWN - 4

675.60 ERECTING SALVAGED SIGNS

AS SHOWN - 1



604.412 REHAB. DROP INLETS, CATCH BASINS, OR MANHOLE, CLASS I

WILMINGTON:
STA. 278+39.0 LT
STA. 283+82.0 LT
STA. 279+41.0 RT
STA. 282+84.0 RT

616.35 TREATED TIMBER CURB

WILMINGTON:
STA. 279+37.0 - STA. 284+00.0 LT (463.0 LF)
STA. 279+57.0 - STA. 284+00.0 RT (463.0 LF)

621.20 STEEL BEAM GUARDRAIL, GALVANIZED

WILMINGTON:
54 STA. 269+88.0 - STA. 270+63.0 RT (75.0 LF)
22 STA. 271+44.5 - STA. 271+69.5 RT (25.0 LF)
67 STA. 271+92.0 - STA. 272+67.0 LT (75.0 LF)
95 STA. 278+82.0 - STA. 284+00.0 LT (518.0 LF)

621.50 MANUFACTURED TERMINAL SECTION, FLARED

WILMINGTON:
18 STA. 269+50.5 - STA. 269+88.0 RT (54)
14 STA. 270+35.5 - STA. 270+73.0 LT (52)
47 STA. 271+69.5 - STA. 272+07.0 RT (271+85)
42 STA. 272+67.0 - STA. 273+04.5 LT (272+80)
58 STA. 278+44.5 - STA. 278+82.0 LT (95)

621.70 GUARDRAIL APPROACH SECTION, GALVANIZED TYPE I

WILMINGTON:
32 STA. 270+63.0 - STA. 271+13.0 RT (270+82)
52 STA. 270+73.0 - STA. 271+23.0 LT (271+30)
17 STA. 271+42.0 - STA. 271+92.0 LT (67)

621.71 GUARDRAIL APPROACH SECTION, GALVANIZED TYPE II

WILMINGTON:
STA. 271+32.0 - STA. 271+44.5 RT (22)

621.80 REMOVAL AND DISPOSAL OF GUARDRAIL

WILMINGTON:
STA. 269+59.0 - STA. 271+09.0 RT (150.0 LF)
STA. 270+44.0 - STA. 271+06.5 LT (62.5 LF)
STA. 271+34.0 - STA. 272+06.0 RT (72.0 LF)
STA. 271+46.0 - STA. 272+98.0 LT (152.0 LF)
STA. 278+49.0 - STA. 284+00.0 LT (551.0 LF)

676.10 DELINEATOR WITH STEEL POST

♀ TYPE I WHITE
WILMINGTON:
STA. 269+50.5 RT
STA. 270+35.5 LT
STA. 272+07.0 RT
STA. 273+04.5 LT
STA. 278+44.5 LT

SIGN LEGEND
R = REMOVE
S = SALVAGE
N = NEW
RET = RETAIN
B-B = BACK TO BACK
EXISTING = - - - - -
NEW = _____

NOTES:

- PAVING LIMIT ON ALL TOWN HIGHWAYS SHALL BE MEASURED 25 FT BACK FROM VT. ROUTE 9 EDGE OF SHOULDER UNLESS DENOTED OTHERWISE ON THE PLANS OR AS DIRECTED BY THE RESIDENT ENGINEER.
- SEE SHEET 75 FOR BR 36 DETAILS.

PROJECT LAYOUT SHEET #14	PROJECT NAME: WILMINGTON	PLOT DATE: 23-AUG-2010 14
	PROJECT NUMBER: AC_NH_2504(1)S	DRAWN BY: C.A.K.
	FILE NAME: p05b044.dgn	CHECKED BY: D.W.E.
	DESIGNED BY: M.J.M.	SHEET 33 OF 125
	IPARM FILE: p05b044L14.i	