

646.602 DURABLE 4 INCH WHITE LINE, THERMOPLASTIC  
 (ALL LINES WILL INCLUDE EDGE LINE BREAKS AND RADIUS FOR TOWN HIGHWAYS)

WILMINGTON:  
 STA. 124+00.00 - STA. 140+00.00 EDGE LINE LT & RT

646.412 DURABLE 4 INCH YELLOW LINE, THERMOPLASTIC  
 (ALL LINES WILL INCLUDE C/L BREAKS FOR TOWN HIGHWAYS) S=SOLID, D=DASHED

WILMINGTON:  
 STA. 124+00.00 - STA. 140+00.00 LT C RT  
 S - S

646.602 TEMPORARY 4 INCH WHITE LINE, PAINT  
 (ALL LINES WILL INCLUDE EDGE LINE BREAKS AND RADIUS FOR TOWN HIGHWAYS)

WILMINGTON:  
 STA. 124+00.00 - STA. 140+00.00 EDGE LINE LT & RT

646.612 TEMPORARY 4 INCH YELLOW LINE, PAINT  
 (ALL LINES WILL INCLUDE C/L BREAKS FOR TOWN HIGHWAYS) S=SOLID, D=DASHED

WILMINGTON:  
 STA. 124+00.00 - STA. 140+00.00 LT C RT  
 S - S

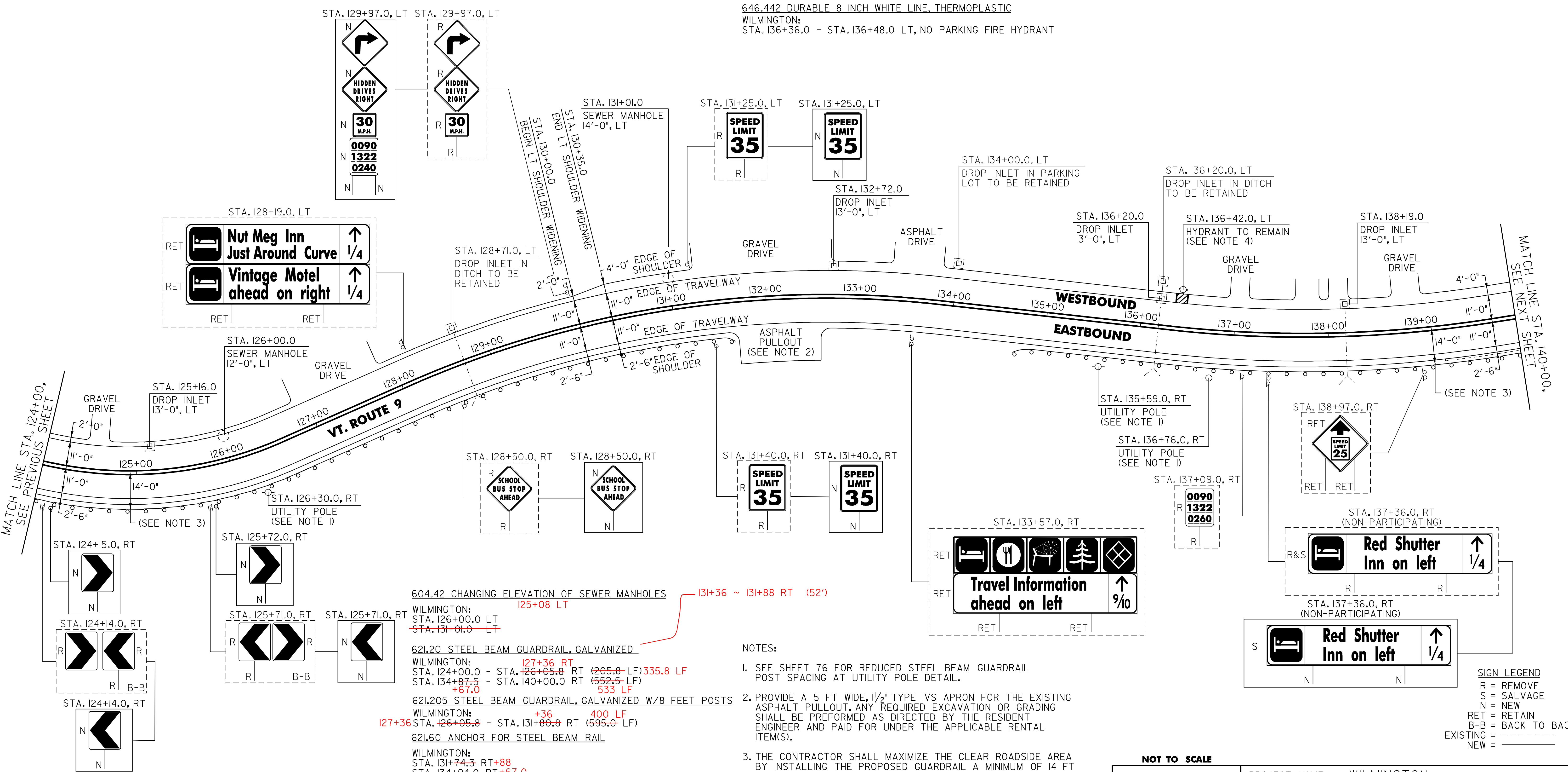
646.442 DURABLE 8 INCH WHITE LINE, THERMOPLASTIC

WILMINGTON:  
 STA. 136+36.0 - STA. 136+48.0 LT, NO PARKING FIRE HYDRANT

675.50 REMOVING SIGNS  
 AS SHOWN - II

675.50 REMOVING SIGNS (NON-PARTICIPATING)  
 AS SHOWN - I

675.60 ERECTING SALVAGED SIGNS (NON-PARTICIPATING)  
 AS SHOWN - I



MATCH LINE STA. 124+00.00, SEE PREVIOUS SHEET

MATCH LINE STA. 140+00.00, SEE NEXT SHEET

604.42 CHANGING ELEVATION OF SEWER MANHOLES  
 WILMINGTON:  
 STA. 126+00.0 LT  
 STA. 131+01.0 LT

621.20 STEEL BEAM GUARDRAIL, GALVANIZED  
 WILMINGTON:  
 STA. 124+00.0 - STA. 126+05.8 RT (205.8 LF)  
 STA. 134+87.5 - STA. 140+00.0 RT (552.5 LF)  
 +67.0 533 LF

621.205 STEEL BEAM GUARDRAIL, GALVANIZED W/8 FEET POSTS  
 WILMINGTON:  
 STA. 126+05.8 - STA. 131+80.8 RT (595.0 LF)  
 +36 400 LF

621.60 ANCHOR FOR STEEL BEAM RAIL  
 WILMINGTON:  
 STA. 131+74.3 RT+88  
 STA. 134+94.0 RT+67.0

621.80 REMOVAL AND DISPOSAL OF GUARDRAIL  
 WILMINGTON:  
 STA. 124+00.0 - STA. 131+51.0 RT (751.0 LF)  
 STA. 135+71.0 - STA. 136+70.0 RT (99.0 LF)  
 STA. 137+65.0 - STA. 140+00.0 RT (235.0 LF)

NOTES:

- SEE SHEET 76 FOR REDUCED STEEL BEAM GUARDRAIL POST SPACING AT UTILITY POLE DETAIL.
- PROVIDE A 5 FT WIDE, 1/2" TYPE IVS APRON FOR THE EXISTING ASPHALT PULLOUT. ANY REQUIRED EXCAVATION OR GRADING SHALL BE PERFORMED AS DIRECTED BY THE RESIDENT ENGINEER AND PAID FOR UNDER THE APPLICABLE RENTAL ITEM(S).
- THE CONTRACTOR SHALL MAXIMIZE THE CLEAR ROADSIDE AREA BY INSTALLING THE PROPOSED GUARDRAIL A MINIMUM OF 14 FT FROM THE CENTER LINE OF VT. ROUTE 9 OR AS DIRECTED BY THE RESIDENT ENGINEER. ANY REQUIRED EXCAVATION OR THE PLACEMENT OF AGGREGATE SHOULDER MATERIAL FOR ADDITIONAL ITEM(S) AS DIRECTED BY THE RESIDENT ENGINEER.
- SEE SHEET 77 FOR FIRE HYDRANT PAVEMENT MARKINGS DETAIL.

604.412 REHAB. DROP INLETS, CATCH BASINS, OR MANHOLE, CLASS I

WILMINGTON:  
 STA. 125+16.0 LT  
 STA. 132+72.0 LT  
 STA. 136+20.0 LT  
 STA. 138+19.0 LT

SIGN LEGEND  
 R = REMOVE  
 S = SALVAGE  
 N = NEW  
 RET = RETAIN  
 B-B = BACK TO BACK  
 EXISTING = - - - - -  
 NEW = \_\_\_\_\_

**NOT TO SCALE**

**PROJECT LAYOUT SHEET #3**

PROJECT NAME: WILMINGTON  
 PROJECT NUMBER: AC\_NH\_2504(I)S

FILE NAME: p05b044.dgn\_\_ PLOT DATE: 23-AUG-2010 14  
 PROJECT LEADER: D.E.G. DRAWN BY: C.A.K.  
 DESIGNED BY: M.J.M. CHECKED BY: D.W.E.  
 IPARM FILE: p05b044L03.i SHEET 22 OF 125