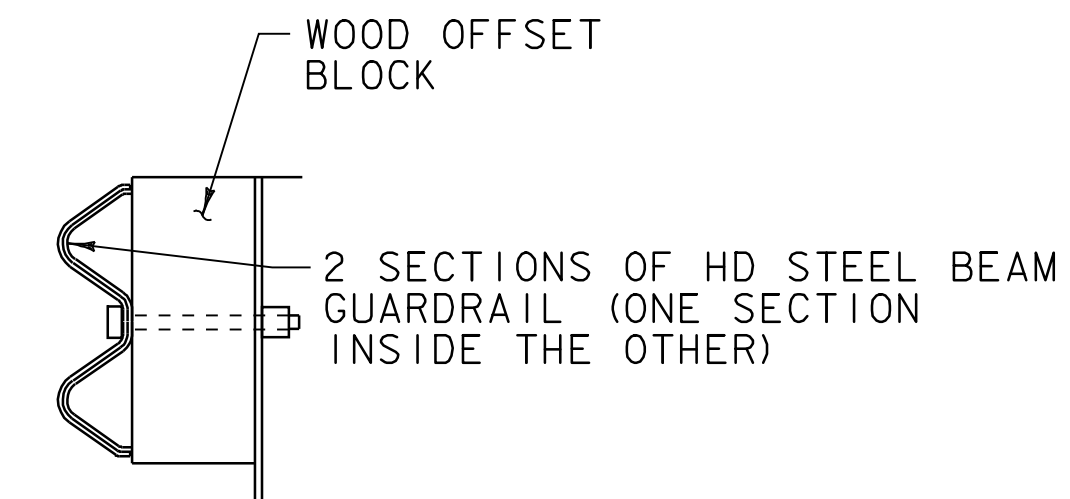


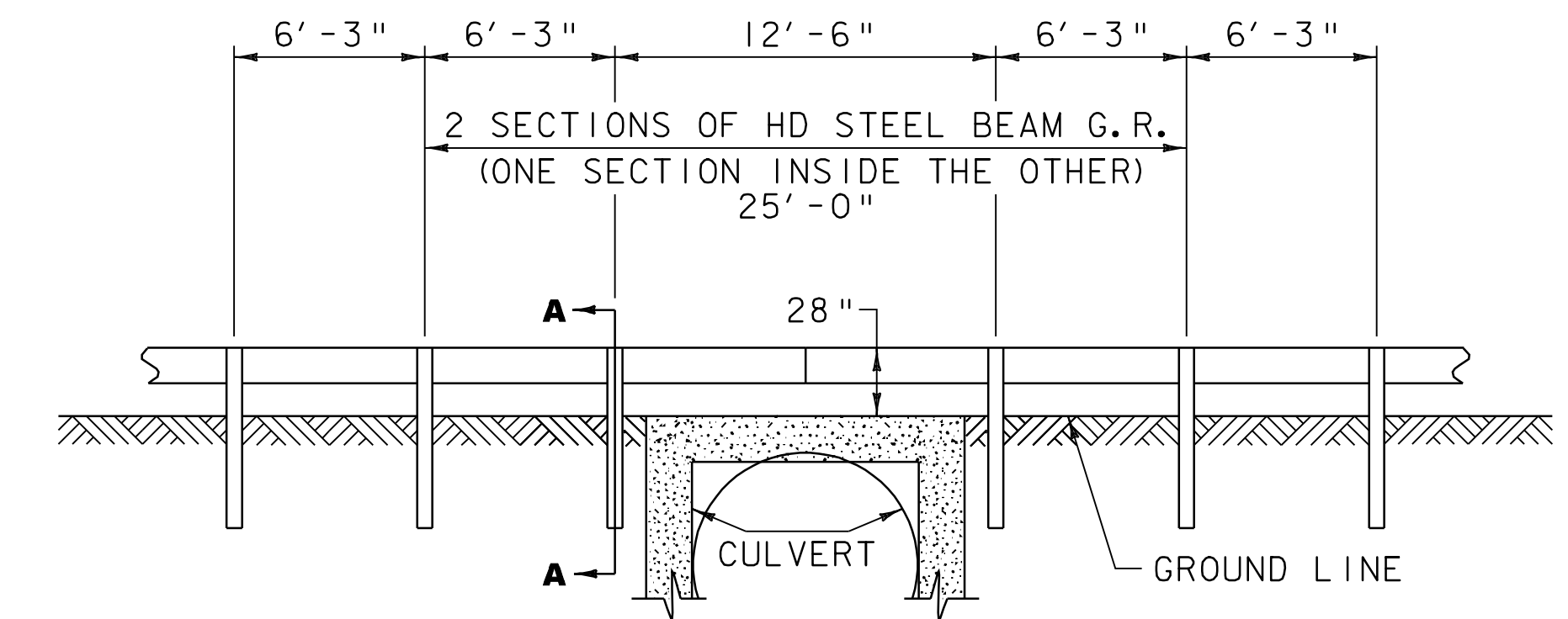
NOTES

1. SEE STANDARD G-1 FOR STEEL BEAM GUARDRAIL DETAILS.
2. THIS WORK SHALL BE PAID UNDER ITEM 900.640 SPECIAL PROVISION (HD STEEL BEAM GUARDRAIL, GALVANIZED/NESTED) AT A PAY FACTOR OF 1.0.
3. THIS DETAIL TO BE USED AS INDICATED ON THE ITEM DETAIL SUMMARY SHEET OR AS DIRECTED BY THE RESIDENT ENGINEER.



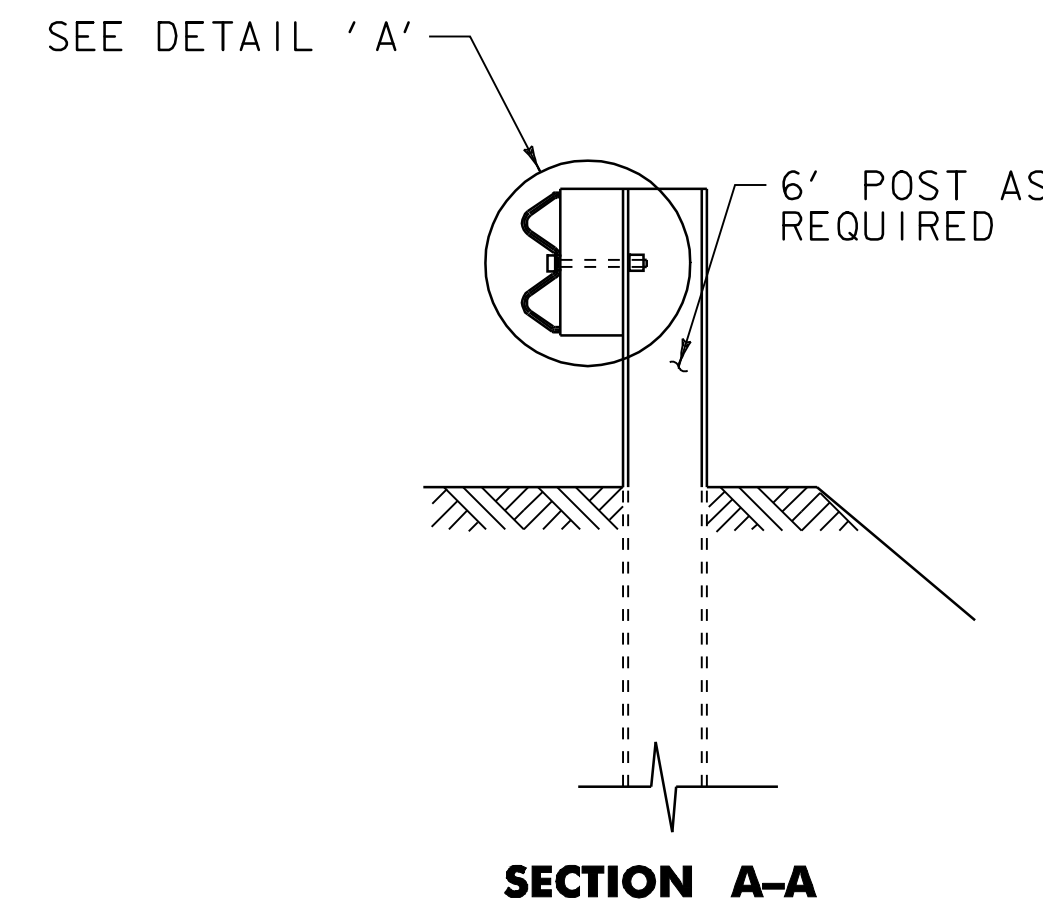
DETAIL A

DIRECTION OF TRAFFIC

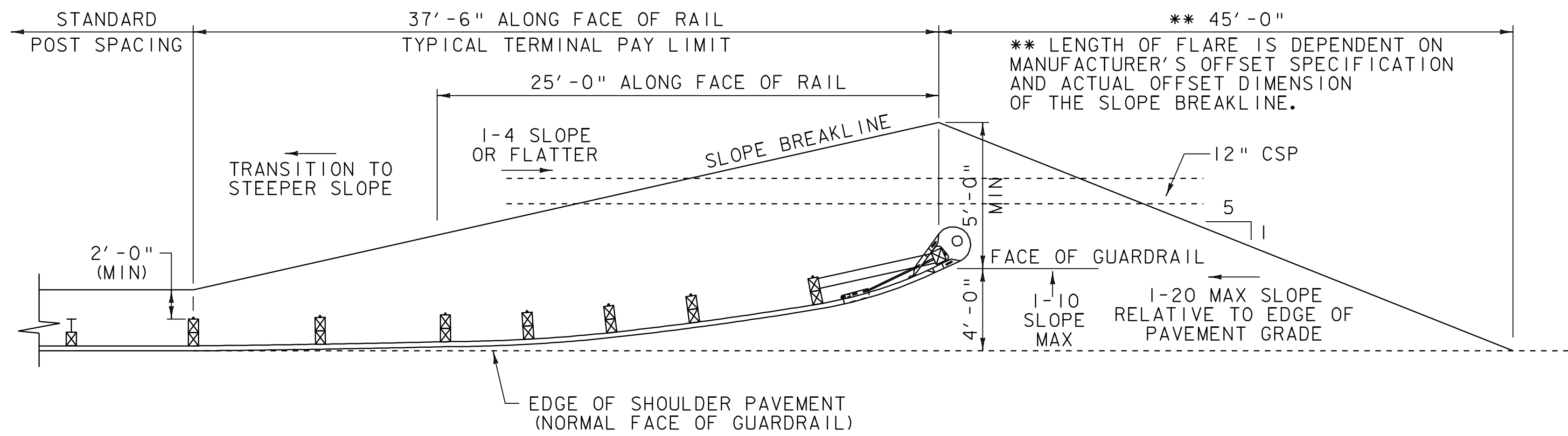


STEEL BEAM GUARDRAIL AT SMALL CULVERT DETAIL

FERRISBURGH U.S. ROUTE 7
STA 89+13.0 LT
STA 89+13.0 RT



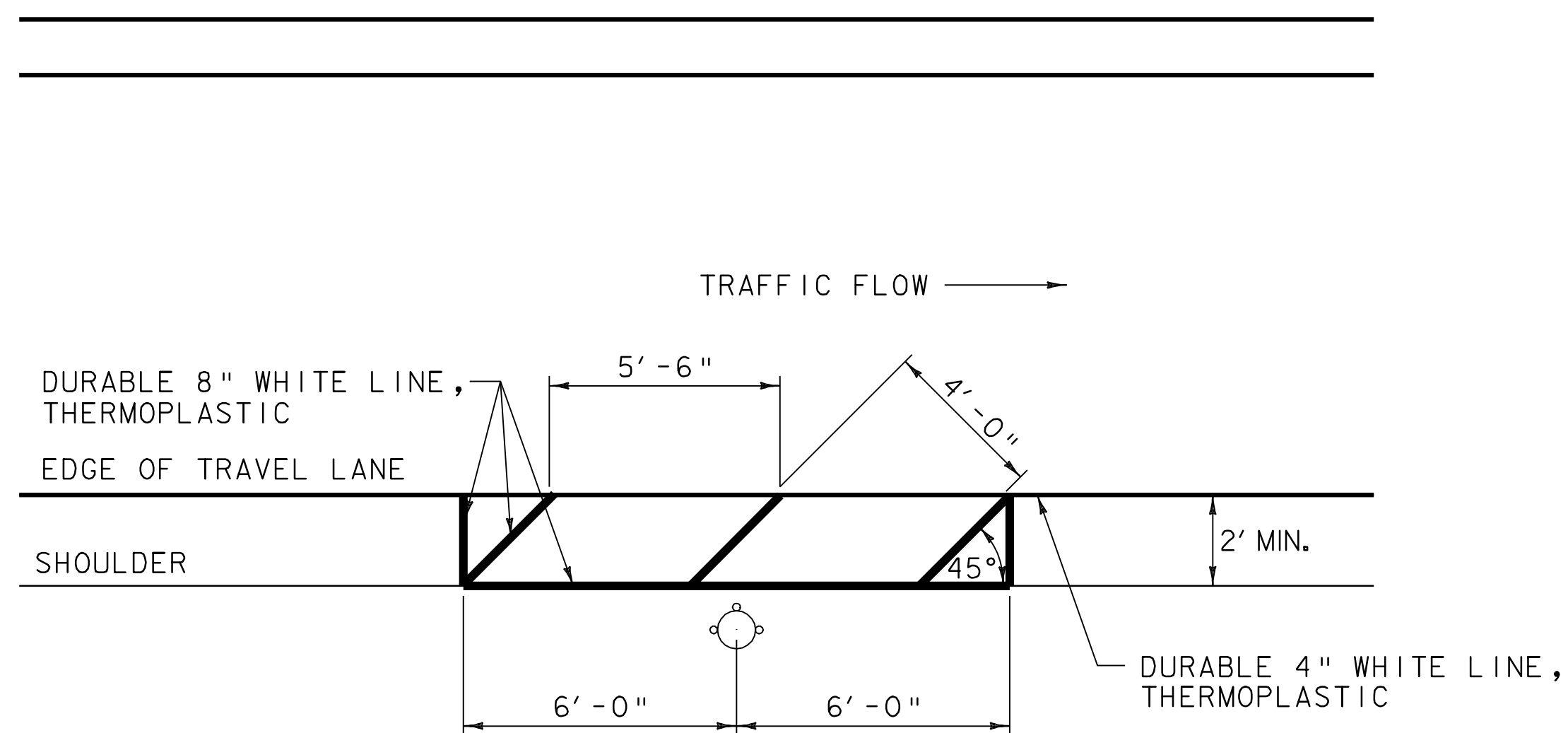
SECTION A-A



FLARED END SECTION WITH CULVERT PIPE DETAIL

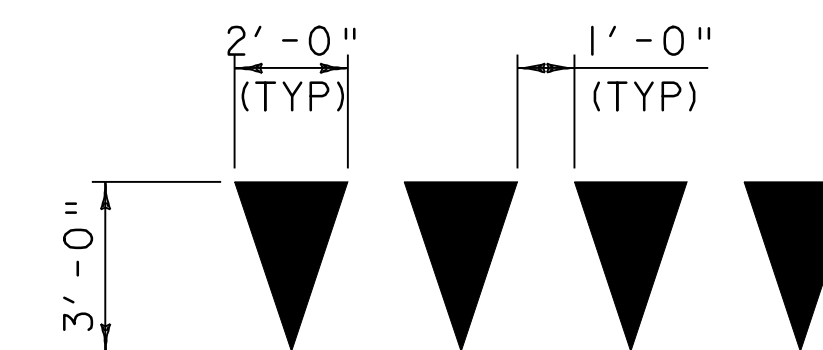
NEW HAVEN U.S. ROUTE 7
STA 339+20.5 LT

WALTHAM U.S. ROUTE 7
STA 23+06.5 LT
STA 26+94.0 LT
STA 45+07.5 LT
STA 49+70.0 LT



FIRE HYDRANT PAVEMENT MARKING DETAIL

FERRISBURGH U.S. ROUTE 7
STA 182+70.0 RT



YIELD LINE DETAILS

FERRISBURGH U.S. ROUTE 7
STA 80+04.48 LT

NOTE:

1. EACH TRIANGLE SHALL BE PAID AS ONE EACH ITEM 646.492 DURABLE LETTER OR SYMBOL, THERMOPLASTIC AND 646.692 TEMPORARY LETTER OR SYMBOL, PAINT.

NOT TO SCALE

**MISCELLANEOUS
DETAILS
SHEET**

PROJECT NAME: NEW_HAVEN_-_FERRISBURGH
PROJECT NUMBER: NH_2503(I)S

FILE NAME: Q5bQ38.dgn
PROJECT LEADER: D.E.G.
DESIGNED BY: M.J.M.
IPARM FILE: pQ5bQ38md.i

PLOT DATE: 31-JUL-2009 15
DRAWN BY: C.A.K.
CHECKED BY: D.W.E.
SHEET 86 OF 87