

646.402 DURABLE 4 INCH WHITE LINE, THERMOPLASTIC
(ALL LINES WILL INCLUDE EDGE LINE BREAKS AND RADIUS FOR TOWN HIGHWAYS)

FERRISBURGH:
STA 83+00.00 - STA 99+00.00 EDGE LINE LT & RT
STA 83+00.00 - STA 85+65.00 SOLID LANE LINE LT
STA 85+65.00 - STA 89+50.00 DOTTED LANE LINE LT

646.602 TEMPORARY 4 INCH WHITE LINE, PAINT
(ALL LINES WILL INCLUDE EDGE LINE BREAKS AND RADIUS FOR TOWN HIGHWAYS)

FERRISBURGH:
STA 83+00.00 - STA 99+00.00 EDGE LINE LT & RT
STA 83+00.00 - STA 85+65.00 SOLID LANE LINE LT
STA 85+65.00 - STA 89+50.00 DOTTED LANE LINE LT

646.412 DURABLE 4 INCH YELLOW LINE, THERMOPLASTIC
(ALL LINES WILL INCLUDE C/L BREAKS FOR TOWN HIGHWAYS) S=SOLID, D=DASHED

FERRISBURGH:
STA 85+65.00 - STA 89+76.00 S - S
STA 89+76.00 - STA 96+62.00 S - D
STA 96+62.00 - STA 99+00.00 S - S
STA 83+00.00 - STA 85+65.00 DOUBLE SOLID MEDIAN CL & RT

646.612 TEMPORARY 4 INCH YELLOW LINE, PAINT
(ALL LINES WILL INCLUDE C/L BREAKS FOR TOWN HIGHWAYS) S=SOLID, D=DASHED

FERRISBURGH:
STA 85+65.00 - STA 89+76.00 S - S
STA 89+76.00 - STA 96+62.00 S - D
STA 96+62.00 - STA 99+00.00 S - S
STA 83+00.00 - STA 85+65.00 DOUBLE SOLID MEDIAN CL & RT

646.492 DURABLE LETTER OR SYMBOL, THERMOPLASTIC

FERRISBURGH:
STA 83+82.80 LT, ARROW (1EA)
STA 84+70.30 LT, "O,N,L,Y" (4 EA)
STA 85+57.80 LT, ARROW (1EA)
STA 89+49.00 LT, "A,H,E,A,D" (5 EA)
STA 89+81.00 LT, "S,I,G,N,A,L" (6 EA)

646.452 DURABLE 8 INCH YELLOW LINE, THERMOPLASTIC

FERRISBURGH:
STA 83+00.00 LT- STA 85+65.00 HATCHED MEDIAN RT

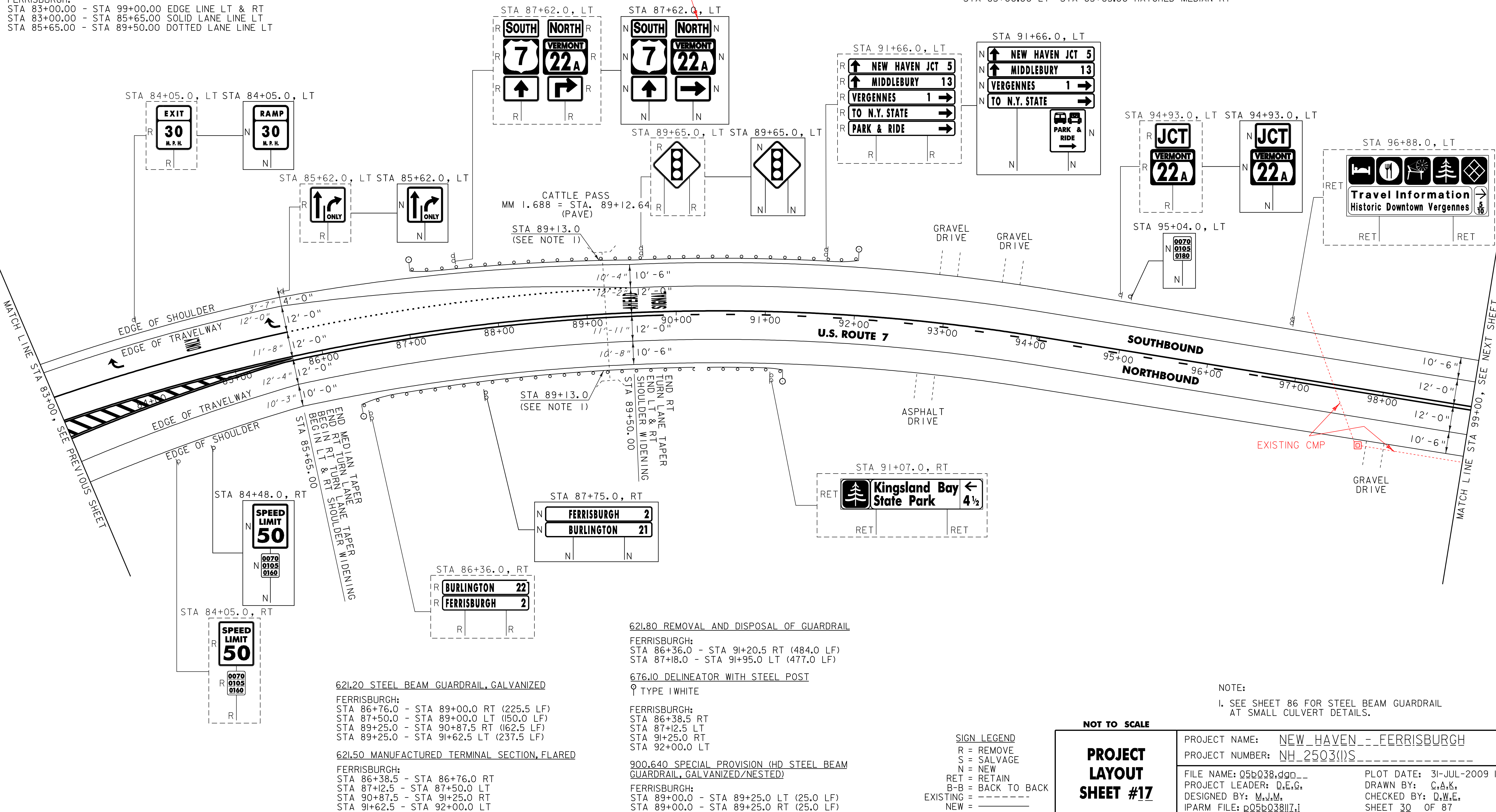
646.692 TEMPORARY LETTER OR SYMBOL, PAINT

FERRISBURGH:
STA 83+82.80 LT, ARROW (1EA)
STA 85+57.80 LT, ARROW (1EA)
STA 89+49.00 LT, "A,H,E,A,D" (5 EA)
STA 89+81.00 LT, "S,I,G,N,A,L" (6 EA)

675.50 REMOVING SIGNS

AS SHOWN - 20

SHOULD BE SOUTH
INSTALLED SOUTH



621.20 STEEL BEAM GUARDRAIL, GALVANIZED
FERRISBURGH:
STA 86+76.0 - STA 89+00.0 RT (225.5 LF)
STA 87+50.0 - STA 89+00.0 LT (150.0 LF)
STA 89+25.0 - STA 90+87.5 RT (162.5 LF)
STA 89+25.0 - STA 91+62.5 LT (237.5 LF)

621.50 MANUFACTURED TERMINAL SECTION, FLARED
FERRISBURGH:
STA 86+38.5 - STA 86+76.0 RT
STA 87+12.5 - STA 87+50.0 LT
STA 90+87.5 - STA 91+25.0 RT
STA 91+62.5 - STA 92+00.0 LT

621.80 REMOVAL AND DISPOSAL OF GUARDRAIL
FERRISBURGH:
STA 86+36.0 - STA 91+20.5 RT (484.0 LF)
STA 87+18.0 - STA 91+95.0 LT (477.0 LF)

676.10 DELINEATOR WITH STEEL POST
☉ TYPE I WHITE
FERRISBURGH:
STA 86+38.5 RT
STA 87+12.5 LT
STA 91+25.0 RT
STA 92+00.0 LT

900.640 SPECIAL PROVISION (HD STEEL BEAM GUARDRAIL, GALVANIZED/NESTED)
FERRISBURGH:
STA 89+00.0 - STA 89+25.0 LT (25.0 LF)
STA 89+00.0 - STA 89+25.0 RT (25.0 LF)

SIGN LEGEND
R = REMOVE
S = SALVAGE
N = NEW
RET = RETAIN
B-B = BACK TO BACK
EXISTING = -----
NEW = _____

NOT TO SCALE

PROJECT LAYOUT SHEET #17

NOTE:

1. SEE SHEET 86 FOR STEEL BEAM GUARDRAIL AT SMALL CULVERT DETAILS.

PROJECT NAME: <u>NEW_HAVEN_-_FERRISBURGH</u>	PLOT DATE: 31-JUL-2009 15
PROJECT NUMBER: <u>NH_2503(1)S</u>	DRAWN BY: <u>C.A.K.</u>
FILE NAME: <u>Q5b038.dgn</u>	CHECKED BY: <u>D.W.E.</u>
DESIGNED BY: <u>M.J.M.</u>	SHEET 30 OF 87
IPARM FILE: <u>p05b038117.i</u>	