

646.402 DURABLE 4 INCH WHITE LINE, THERMOPLASTIC
(ALL LINES WILL INCLUDE C/L BREAKS FOR TOWN HIGHWAYS) S=SOLID, D=DASHED

FERRISBURGH:
STA 35+00.00 - STA 51+00.00 EDGE LINE LT & RT
STA 35+02.00 - STA 36+75.00 SOLID LANE LINE LT
STA 35+02.00 - STA 36+75.00 SOLID LANE LINE RT
STA 36+75.00 - STA 38+55.00 DOTTED LANE LINE LT
STA 36+75.00 - STA 38+55.00 DOTTED LANE LINE RT

646.602 TEMPORARY 4 INCH WHITE LINE, PAINT
(ALL LINES WILL INCLUDE EDGE LINE BREAKS AND RADIUS FOR TOWN HIGHWAYS)

FERRISBURGH:
STA 35+00.00 - STA 51+00.00 EDGE LINE LT & RT
STA 35+02.00 - STA 36+75.00 SOLID LANE LINE LT
STA 35+02.00 - STA 36+75.00 SOLID LANE LINE RT
STA 36+75.00 - STA 38+55.00 DOTTED LANE LINE LT
STA 36+75.00 - STA 38+55.00 DOTTED LANE LINE RT

646.412 DURABLE 4 INCH YELLOW LINE, THERMOPLASTIC
(ALL LINES WILL INCLUDE C/L BREAKS FOR TOWN HIGHWAYS) S=SOLID, D=DASHED

FERRISBURGH: LT C RT
STA 41+80.00 - STA 43+50.00 S - S
STA 43+50.00 - STA 51+00.00 S - D
STA 35+00.00 - STA 36+75.00 DOUBLE SOLID RT
STA 36+75.00 - STA 41+80.00 DOUBLE SOLID MEDIAN LT&RT

646.612 TEMPORARY 4 INCH YELLOW LINE, PAINT
(ALL LINES WILL INCLUDE EDGE LINE BREAKS AND RADIUS FOR TOWN HIGHWAYS)

FERRISBURGH: LT C RT
STA 41+80.00 - STA 43+50.00 S - S
STA 43+50.00 - STA 51+00.00 S - D
STA 35+00.00 - STA 36+75.00 DOUBLE SOLID RT
STA 36+75.00 - STA 41+80.00 DOUBLE SOLID MEDIAN LT&RT
STA 38+75.0, LT

646.452 DURABLE 8 INCH YELLOW LINE, THERMOPLASTIC

FERRISBURGH:
STA 36+75.0 - STA 41+80.0 HATCHED MEDIAN LT&RT

646.482 DURABLE 24 INCH STOP BAR, THERMOPLASTIC

FERRISBURGH:
STA 35+01.0 LT/RT

646.682 TEMPORARY 24 INCH STOP BAR, PAINT

FERRISBURGH:
STA 35+01.0 LT/RT

646.492 DURABLE LETTER OR SYMBOL, THERMOPLASTIC

FERRISBURGH:
STA 35+10.3 LT, ARROW (IEA)
STA 35+10.3 RT, ARROW (IEA)
STA 35+90.0 LT, "O,N,L,Y" (4 EA)
STA 35+90.0 RT, "O,N,L,Y" (4 EA)
STA 36+70.8 LT, ARROW (IEA)
STA 36+70.8 RT, ARROW (IEA)
STA 39+89.0 LT, "A,H,E,A,D" (5 EA)
STA 40+21.0 LT, "S,I,G,N,A,L" (6 EA)

646.692 TEMPORARY LETTER OR SYMBOL, PAINT

FERRISBURGH:
STA 35+10.3 LT, ARROW (IEA)
STA 35+10.3 RT, ARROW (IEA)
STA 36+70.8 LT, ARROW (IEA)
STA 36+70.8 RT, ARROW (IEA)
STA 39+89.0 LT, "A,H,E,A,D" (5 EA)
STA 40+21.0 LT, "S,I,G,N,A,L" (6 EA)

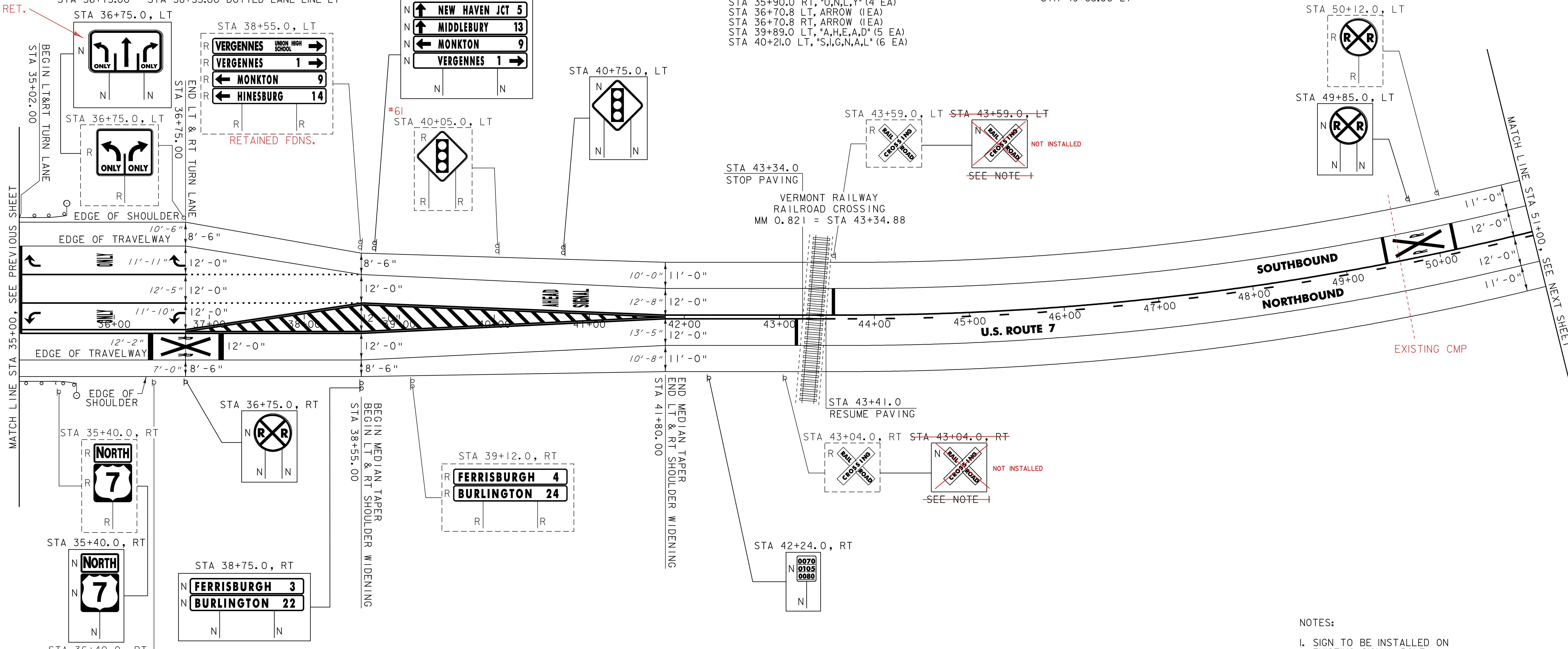
675.50 REMOVING SIGNS AS SHOWN - 14

646.512 DURABLE RAILROAD CROSSING SYMBOL, THERMOPLASTIC

FERRISBURGH:
STA 36+75.00 RT
STA 49+85.00 LT

646.712 TEMPORARY RAILROAD CROSSING SYMBOL, PAINT

FERRISBURGH:
STA 36+75.00 RT
STA 49+85.00 LT



621.20 STEEL BEAM GUARDRAIL, GALVANIZED

FERRISBURGH:
STA 35+00.0 - STA 35+12.5 LT (12.5 LF)
STA 35+00.0 - STA 35+23.5 RT (23.5 LF)

621.50 MANUFACTURED TERMINAL SECTION, FLARED

FERRISBURGH:
STA 35+12.5 - STA 35+50.0 LT
STA 35+23.5 - STA 35+61.0 RT

621.80 REMOVAL AND DISPOSAL OF GUARDRAIL

FERRISBURGH:
STA 35+00.0 - STA 35+44.0 LT (44.0 LF)
STA 35+00.0 - STA 35+50.0 RT (50.0 LF)

676.10 DELINEATOR WITH STEEL POST

⊙ TYPE 1 WHITE

FERRISBURGH:
STA 35+50.0 LT
STA 35+61.0 RT

SIGN LEGEND

- R = REMOVE
- S = SALVAGE
- N = NEW
- RET = RETAIN
- B-B = BACK TO BACK
- EXISTING = - - - - -
- NEW = _____

NOT TO SCALE

PROJECT LAYOUT SHEET #14

PROJECT NAME: NEW_HAVEN_-_FERRISBURGH
PROJECT NUMBER: NH_2503(1)S

FILE NAME: Q5bQ38.dgn PLOT DATE: 31-JUL-2009 15
PROJECT LEADER: D.E.G. DRAWN BY: C.A.K.
DESIGNED BY: M.J.M. CHECKED BY: D.W.E.
IPARM FILE: p05b03814.1 SHEET 21 OF 87

NOTES:

1. SIGN TO BE INSTALLED ON EXISTING SIGNAL POLE.
2. SEE SHEET 50 FOR VEHICLE DETECTOR LOOP DETAIL.