

646.402 DURABLE 4 INCH WHITE LINE, THERMOPLASTIC
(ALL LINES WILL INCLUDE EDGE LINE BREAKS AND RADIUS FOR TOWN HIGHWAYS)

WALTHAM:
STA 74+00.00 - STA 86+22.24 EDGE LINE LT & RT
STA 74+00.00 - STA 86+22.24 DASHED LANE LINE LT

FERRISBURGH:
STA 0+00.00 - STA 3+00.00 EDGE LINE LT & RT
STA 0+00.00 - STA 3+00.00 DASHED LANE LINE LT
STA 2+60.00 - STA 3+00.00 DOTTED LANE LINE RT

646.602 TEMPORARY 4 INCH WHITE LINE, PAINT

(ALL LINES WILL INCLUDE EDGE LINE BREAKS AND RADIUS FOR TOWN HIGHWAYS)

WALTHAM:
STA 74+00.00 - STA 86+22.24 EDGE LINE LT & RT
STA 74+00.00 - STA 86+22.24 DASHED LANE LINE LT

FERRISBURGH:
STA 0+00.00 - STA 3+00.00 EDGE LINE LT & RT
STA 0+00.00 - STA 3+00.00 DASHED LANE LINE LT
STA 2+60.00 - STA 3+00.00 DOTTED LANE LINE RT

646.412 DURABLE 4 INCH YELLOW LINE, THERMOPLASTIC
(ALL LINES WILL INCLUDE C/L BREAKS FOR TOWN HIGHWAYS) S=SOLID, D=DASHED

WALTHAM:
STA 74+00.0 - STA. 80+75.0 LT S RT S
STA 83+95.20 DOUBLE SOLID RT, TH-3
STA 80+75.00 - STA 83+55.00 DOUBLE SOLID MEDIAN LT & RT
STA 84+40.00 - STA 86+00.00 DOUBLE SOLID MEDIAN LT & RT
STA 86+00.00 - STA 86+22.24 SOLID MEDIAN EDGE LINE LT & RT

FERRISBURGH:
STA 0+00.00 - STA 3+00.00 SOLID MEDIAN EDGE LINE LT & RT

646.612 TEMPORARY 4 INCH YELLOW LINE, PAINT

(ALL LINES WILL INCLUDE C/L BREAKS FOR TOWN HIGHWAYS) S=SOLID, D=DASHED

WALTHAM:
STA 74+00.0 - STA. 80+75.0 LT S RT S
STA 83+95.20 DOUBLE SOLID RT, TH-3
STA 80+75.00 - STA 83+55.00 DOUBLE SOLID MEDIAN LT & RT
STA 84+40.00 - STA 86+00.00 DOUBLE SOLID MEDIAN LT & RT
STA 86+00.00 - STA 86+22.24 SOLID MEDIAN EDGE LINE LT & RT

FERRISBURGH:
STA 0+00.00 - STA 3+00.00 SOLID MEDIAN EDGE LINE LT & RT

646.452 DURABLE 8 INCH YELLOW LINE, THERMOPLASTIC

WALTHAM:
STA 80+75.00 - STA 83+55.00 HATCHED MEDIAN LT & RT
STA 84+40.00 - STA 86+00.00 HATCHED MEDIAN LT & RT

646.482 DURABLE 24 INCH STOP BAR, THERMOPLASTIC

WALTHAM:
STA 83+95.20 RT, TH-3

646.492 DURABLE LETTER OR SYMBOL, THERMOPLASTIC

WALTHAM:
STA 83+95.20 RT, TH-3 "S,T,O,P" (4 EA)

646.682 TEMPORARY 24 INCH STOP BAR, PAINT

WALTHAM:
STA 83+95.20 RT, TH-3

646.692 TEMPORARY LETTER OR SYMBOL, PAINT

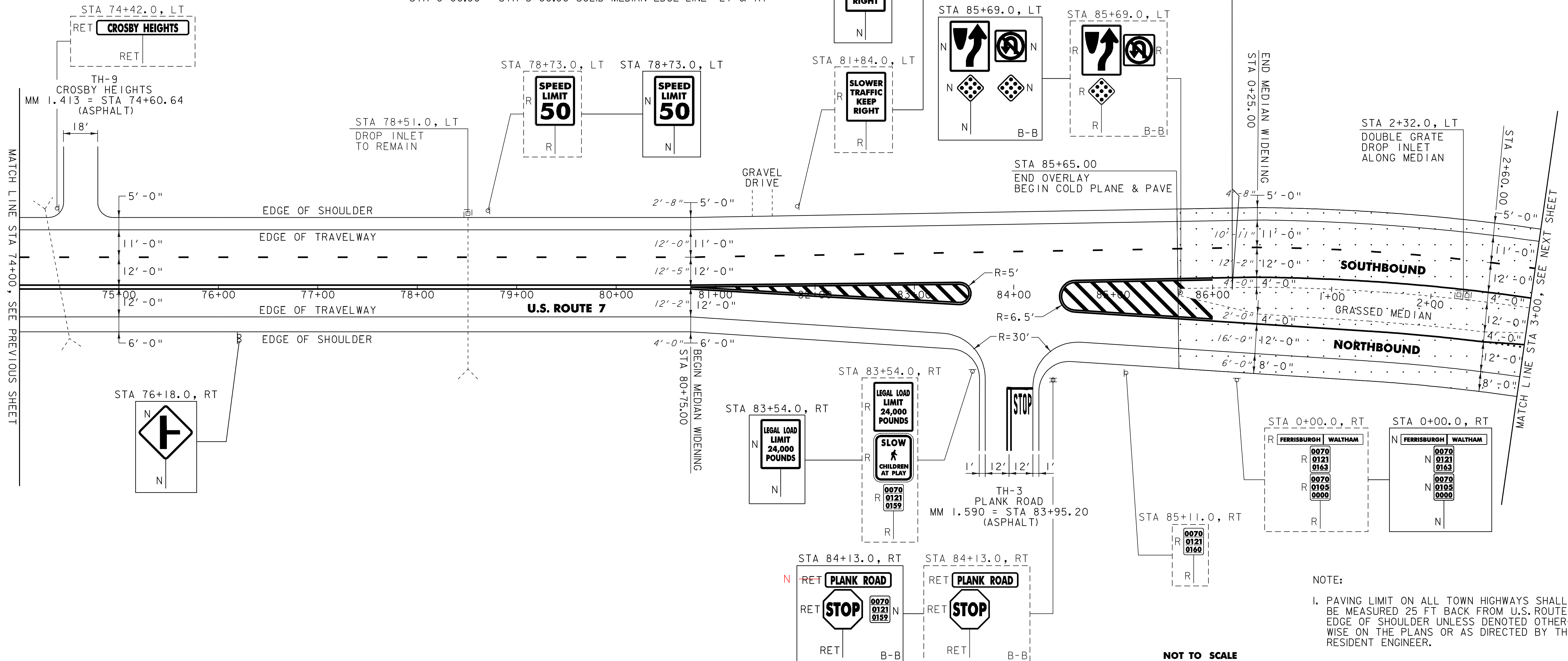
WALTHAM:
STA 83+95.20 RT, TH-3 "S,T,O,P" (4 EA)

646.81 PAINTED CURB

WALTHAM:
STA 85+65.00 - STA 85+95.00 LT & RT (72.0 LF)

675.50 REMOVING SIGNS

AS SHOWN - 12



END WALTHAM
MM 1.633 = STA 86+22.24
BEGIN FERRISBURGH
MM 0.000 = STA 0+00.00

MATCH LINE STA 74+00, SEE PREVIOUS SHEET

MATCH LINE STA 3+00, SEE NEXT SHEET

NOTE:
1. PAVING LIMIT ON ALL TOWN HIGHWAYS SHALL BE MEASURED 25 FT BACK FROM U.S. ROUTE 7 EDGE OF SHOULDER UNLESS DENOTED OTHERWISE ON THE PLANS OR AS DIRECTED BY THE RESIDENT ENGINEER.

NOT TO SCALE

PROJECT LAYOUT SHEET #11

PROJECT NAME: NEW HAVEN - FERRISBURGH
PROJECT NUMBER: NH_2503(1)S
FILE NAME: Q5b038.dgn PLOT DATE: 31-JUL-2009 15
PROJECT LEADER: D.E.G. DRAWN BY: C.A.K.
DESIGNED BY: M.J.M. CHECKED BY: D.W.E.
IPARM FILE: Q5b038(1)S SHEET 24 OF 87

604.412 REHAB. DROP INLETS, CATCH BASINS OR MANHOLES, CLASS 1

FERRISBURGH:
STA 2+32.0 LT

AREA TO BE COLD PLANED AND PAVED

SIGN LEGEND
R = REMOVE
S = SALVAGE
N = NEW
RET = RETAIN
B-B = BACK TO BACK
EXISTING = - - - - -
NEW = _____