

646.402 DURABLE 4 INCH WHITE LINE, THERMOPLASTIC
 (ALL LINES WILL INCLUDE EDGE LINE BREAKS AND
 RADIUS FOR TOWN HIGHWAYS)
 BRIDGEWATER:
 STA. 288+50.00 - STA. 304+00.00 LT & RT

646.412 DURABLE 4 INCH YELLOW LINE, THERMOPLASTIC
 (ALL LINES WILL INCLUDE C/L BREAKS FOR
 TOWN HIGHWAYS) S=SOLID, D=DASHED
 BRIDGEWATER:
 STA. 288+50.00 - STA. 304+00.00 LT & RT
 STA. 299+00.64 DOUBLE SOLID RT, VT. ROUTE 100A

646.482 DURABLE 24 INCH STOP BAR, THERMOPLASTIC
 BRIDGEWATER:
 STA. 299+00.64 RT, VT. ROUTE 100A

646.492 DURABLE LETTER OR SYMBOL, THERMOPLASTIC
 BRIDGEWATER:
 STA. 299+00.64 RT, VT. ROUTE 100A, 'S,T,O,P' (4 EA)

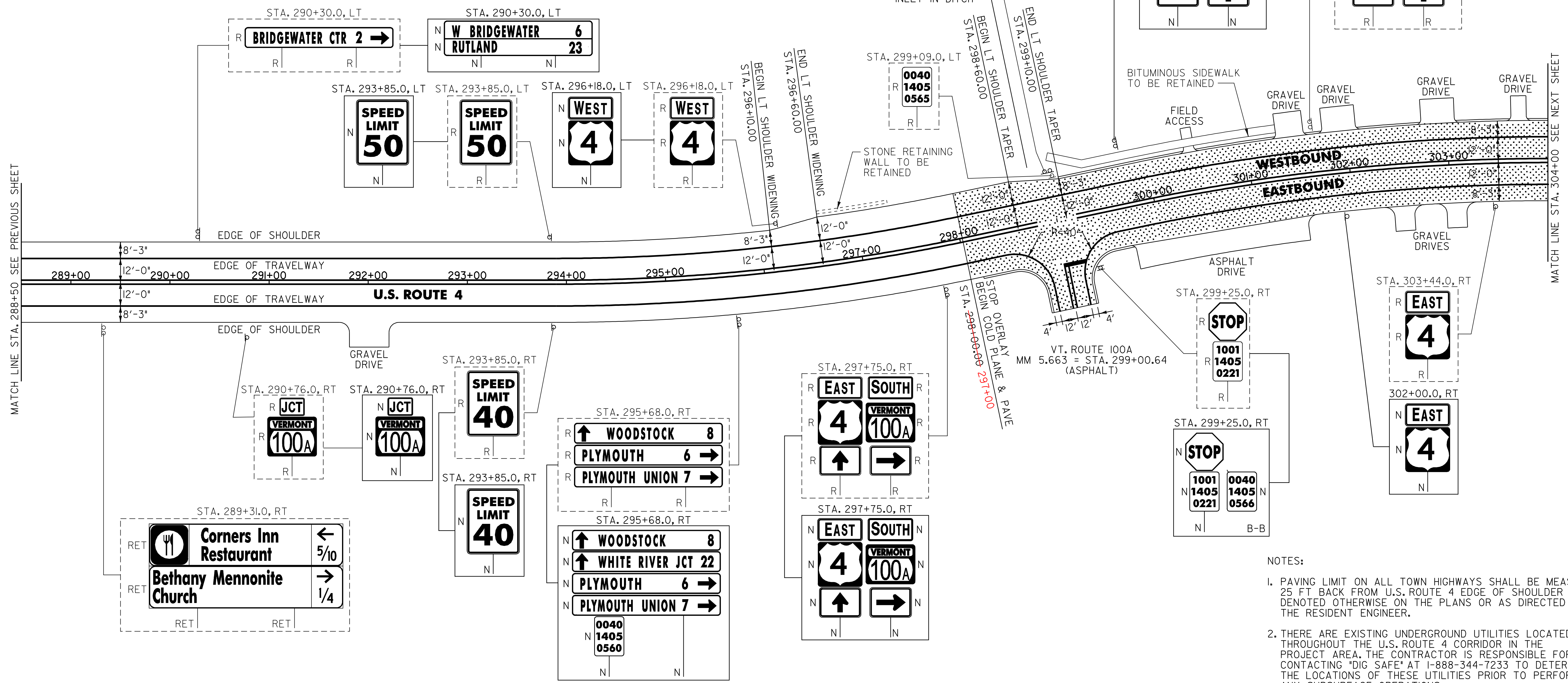
646.602 TEMPORARY 4 INCH WHITE LINE, PAINT
 (ALL LINES WILL INCLUDE EDGE LINE BREAKS AND
 RADIUS FOR TOWN HIGHWAYS)
 BRIDGEWATER:
 STA. 288+50.00 - STA. 304+00.00 LT & RT

646.612 TEMPORARY 4 INCH YELLOW LINE, PAINT
 (ALL LINES WILL INCLUDE C/L BREAKS FOR
 TOWN HIGHWAYS) S=SOLID, D=DASHED
 BRIDGEWATER:
 STA. 288+50.00 - STA. 304+00.00 LT & RT
 STA. 299+00.64 DOUBLE SOLID RT, VT. ROUTE 100A

646.682 TEMPORARY 24 INCH STOP BAR, PAINT
 BRIDGEWATER:
 STA. 299+00.64 RT, VT. ROUTE 100A

646.692 TEMPORARY LETTER OR SYMBOL, PAINT
 BRIDGEWATER:
 STA. 299+00.64 RT, VT. ROUTE 100A, 'S,T,O,P' (8 EA)

675.50 REMOVING SIGNS
 AS SHOWN - 33



MATCH LINE STA. 288+50 SEE PREVIOUS SHEET

MATCH LINE STA. 304+00 SEE NEXT SHEET

AREA TO BE COLD PLANNED & PAVED

604.412 REHAB. DROP INLETS, CATCH BASINS OR MANHOLES, CLASS I
 BRIDGEWATER:
 STA. 298+81.0 LT

SIGN LEGEND
 R = REMOVE
 S = SALVAGE
 N = NEW
 RET = RETAIN
 B-B = BACK TO BACK
 EXISTING = - - - - -
 NEW = _____

NOT TO SCALE

PROJECT LAYOUT SHEET #23

- NOTES:**
- PAVING LIMIT ON ALL TOWN HIGHWAYS SHALL BE MEASURED 25 FT BACK FROM U.S. ROUTE 4 EDGE OF SHOULDER UNLESS DENOTED OTHERWISE ON THE PLANS OR AS DIRECTED BY THE RESIDENT ENGINEER.
 - THERE ARE EXISTING UNDERGROUND UTILITIES LOCATED THROUGHOUT THE U.S. ROUTE 4 CORRIDOR IN THE PROJECT AREA. THE CONTRACTOR IS RESPONSIBLE FOR CONTACTING 'DIG SAFE' AT 1-888-344-7233 TO DETERMINE THE LOCATIONS OF THESE UTILITIES PRIOR TO PERFORMING ANY SUBSURFACE OPERATIONS.

PROJECT NAME: KILLINGTON - BRIDGEWATER
 PROJECT NUMBER: NH 2502(I)S
 FILE NAME: p05b036.dgn
 PROJECT LEADER: D.E.G.
 DESIGNED BY: J.S.P.
 IPARM FILE: p05b036j23.i
 PLOT DATE: 15-MAY-2008 14
 DRAWN BY: C.A.K.
 CHECKED BY: D.E.G.
 SHEET 35 OF 74