

TEMPORARY 4" WHITE LINE, PAINT
 DURABLE 4" WHITE LINE, THERMOPLASTIC
 STA 148+00 TO 151+12 SOLID LT
 STA 148+00 TO 151+12 SOLID RT

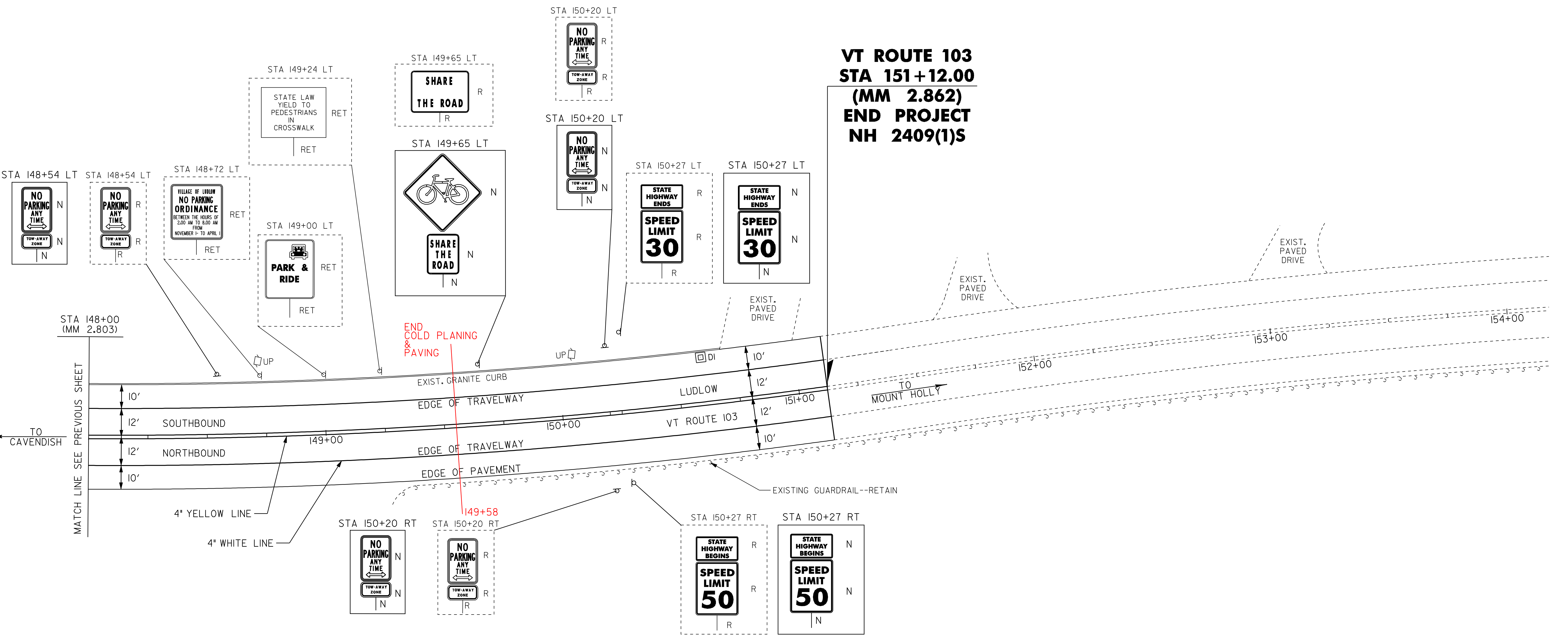
TEMPORARY 4" YELLOW LINE, PAINT
 DURABLE 4" YELLOW LINE, THERMOPLASTIC
 STA 148+00 TO 151+12 SOLID LT & RT

CHANGING ELEVATION OF DROP INLETS,
 CATCH BASINS OR MANHOLES
 STA 150+60 LT (DI)

REMOVING SIGNS
 AS SHOWN - 11

NO WORK DONE

**VT ROUTE 103
 STA 151+12.00
 (MM 2.862)
 END PROJECT
 NH 2409(1)S**



MATCH LINE SEE PREVIOUS SHEET

TO
CAVENDISH

TO
MOUNT HOLLY

NOT TO SCALE

LEGEND

- R = REMOVE EXISTING
- S = SALVAGE
- R&S = REMOVE AND SALVAGE
- N = NEW
- RET = RETAIN
- B-B = BACK TO BACK
- = NEW RAIL
- - - = EXISTING RAIL

**PAVING
 PROJECT
 LAYOUT #17**

PROJECT:	LUDLOW	PROJECT NO.:	NH_2409(1)S
DESIGN FILE NAME:	/pave/05B008/pb008.dgn	PLOT DATE:	20-MAY-2010 14:3
IPARM FILE NAME:	pb0081d17.i	SURVEY DATE:	11/205
SURVEYED BY:	CLD_ENGINEERS, INC	DRAWN BY:	MRS
SQUAD LEADER:	PIS	SHEET:	29 OF 51
CLD_REF_NO.:	05-0389		