

TEMPORARY 4" WHITE LINE, PAINT
 STA 137+00 TO 138+27 SOLID LT
 STA 137+00 TO 138+69 SOLID RT LANE LINE
 STA 137+00 TO 141+30 SOLID RT
 STA 139+20 TO 142+50 SOLID LT
 STA 141+77 TO 142+50 SOLID LT

DURABLE 4" WHITE LINE, THERMOPLASTIC
 STA 137+00 TO 138+27 SOLID LT
 STA 137+00 TO 141+30 SOLID RT
 STA 139+20 TO 142+50 SOLID LT
 STA 141+77 TO 142+50 SOLID LT

DURABLE 4" WHITE LINE, TYPE 1 TAPE
 STA 137+00 TO 138+69 SOLID RT LANE LINE

TEMPORARY 4" YELLOW LINE, PAINT
 DURABLE 4" YELLOW LINE, THERMOPLASTIC
 STA 137+00 TO 138+45 SOLID LT
 STA 138+81 TO 139+08 DOUBLE SOLID LT (SA 3)
 STA 139+14 TO 141+43 DOUBLE SOLID LT & RT
 STA 141+83 TO 142+50 SOLID LT & RT

TEMPORARY 8" YELLOW LINE, PAINT
 DURABLE 8" YELLOW LINE, THERMOPLASTIC
 STA 139+16 TO 140+82 SOLID LT & RT (GORE)

TEMPORARY 24" STOP BAR, PAINT
 DURABLE 24" STOP BAR, TYPE 1 TAPE
 STA 138+80 LT (SA 3)

TEMPORARY LETTER OR SYMBOL, PAINT
 STA 137+41 LT - LEFT TURN ARROW
 STA 138+78 LT - "STOP" (SA 3)

DURABLE LETTER OR SYMBOL, TYPE 1 TAPE
 STA 137+33 LT - LEFT TURN ARROW
 STA 137+87 LT - "ONLY"
 STA 138+41 LT - LEFT TURN ARROW
 STA 138+78 LT - "STOP" (SA 3)

TEMPORARY CROSSWALK MARKING, PAINT
 STA 138+28 TO 139+19 LT
 STA 141+24 LT & RT

SPECIAL PROVISION
 (DURABLE CROSSWALK MARKING, IMPRINTED/COLORIZED)
 STA 138+28 TO 139+19 LT
 STA 141+24 LT & RT

CONSTRUCT SIDEWALK RAMP W/DETECTABLE WARNING SURFACE (CAST IRON)
 STA 138+28 LT (TYPE 1) **ADJUST ELEVATION OF VALVE BOX 141+20 LT**
 STA 139+19 LT (TYPE 1)

CHANGING ELEVATION OF DROP INLETS, CATCH BASINS OR MANHOLES
~~STA 138+07 RT (CB)~~
~~STA 139+95 RT (CB)~~ **138+35 LT**
 STA 142+34 LT (CB)
 STA 140+09 LT

REHAB. DROP INLETS, CATCH BASINS, OR MANHOLES, CLASS 1
 STA 141+06 LT (OTDI)
138+07 RT

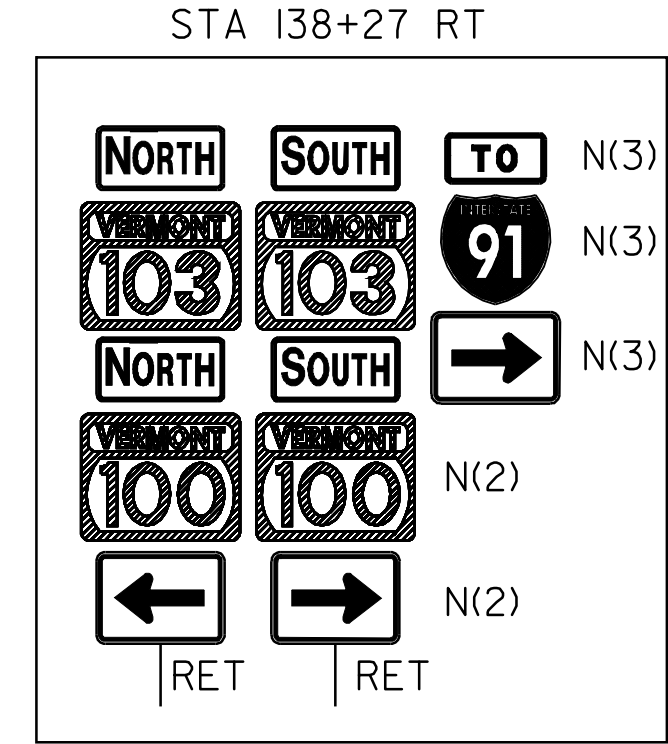
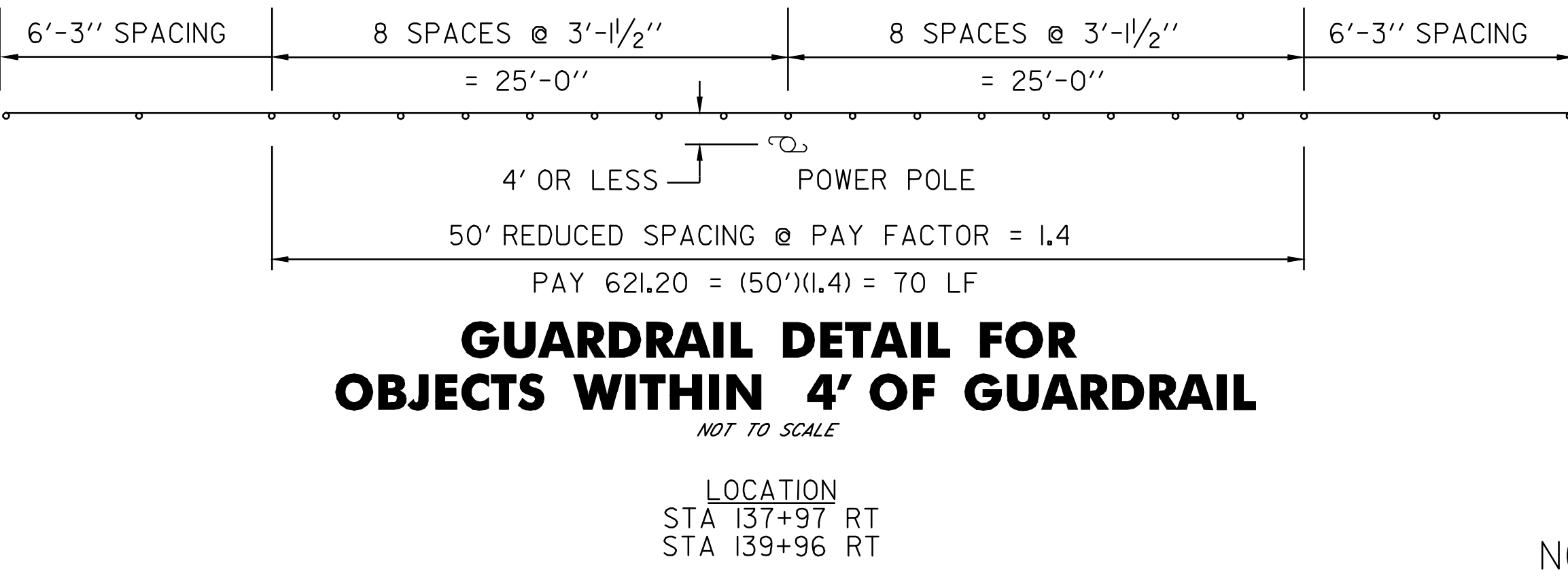
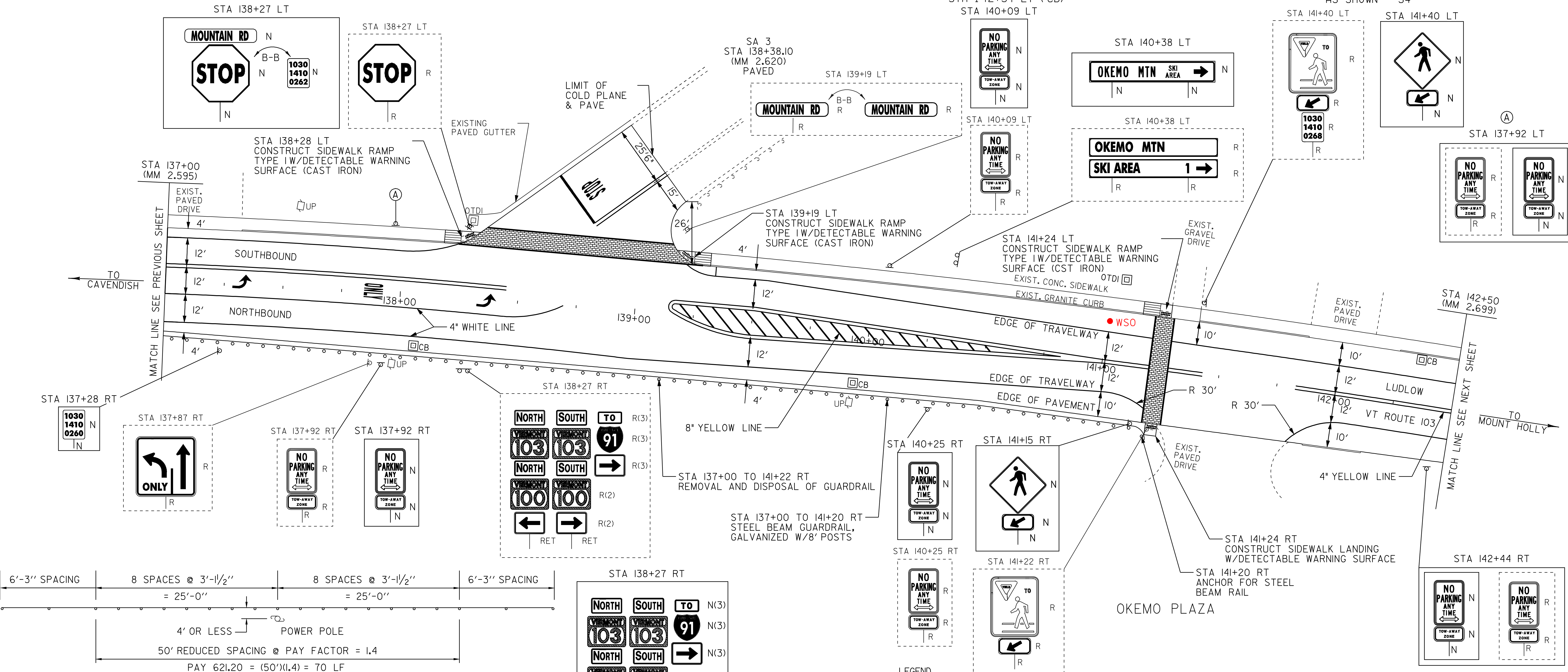
STEEL BEAM GUARDRAIL, GALVANIZED W/8 FEET POSTS
 STA 137+00 TO 141+20 RT

REMOVAL AND DISPOSAL OF GUARDRAIL
 STA 137+00 TO 141+22 RT

ANCHOR FOR STEEL BEAM RAIL
 STA 141+20 RT

BITUMINOUS CONCRETE CURB, TYPE B
 STA 137+00 TO 140+00 RT

REMOVING SIGNS
 AS SHOWN - 34



- LEGEND
- R = REMOVE EXISTING
 - S = SALVAGE
 - R&S = REMOVE AND SALVAGE
 - N = NEW
 - RET = RETAIN
 - B-B = BACK TO BACK
 - = NEW RAIL
 - - - = EXISTING RAIL

PAVING PROJECT LAYOUT #15

| | | | |
|-------------------|------------------------|---------------|------------------|
| PROJECT: | LUDLOW | PROJECT NO.: | NH 2409(I)S |
| DESIGN FILE NAME: | /pave/05B008/pb008.dgn | PLOT DATE: | 20-MAY-2010 14:3 |
| IPARM FILE NAME: | pb008la15.i | SURVEY DATE: | 11/05 |
| SURVEYED BY: | CLD_ENGINEERS, INC | SQUAD LEADER: | PIS |
| SQUAD LEADER: | PIS | DRAWN BY: | MRS |
| CLD_REF_NO.: | 05-0389 | SHEET: | 27 OF 51 |