

TEMPORARY 4" WHITE LINE, PAINT
 STA 116+50 TO 116+58 SOLID LT NO PARKING
 STA 116+50 TO 116+58 SOLID RT NO PARKING
 STA 116+66 TO 117+55 SOLID LT
 STA 116+66 TO 119+20 SOLID RT
 STA 118+19 TO 119+20 SOLID LT
 STA 119+28 TO 119+57 SOLID LT
 STA 119+99 TO 121+50 SOLID LT
 STA 119+99 TO 121+50 SOLID RT
 STA 119+99 TO 121+14 SOLID LT LANE LINE
 STA 121+14 TO 121+50 DOTTED LT LANE LINE

DURABLE 4" WHITE LINE, TYPE I TAPE
 STA 119+99 TO 121+14 SOLID LT LANE LINE
 STA 121+14 TO 121+50 DOTTED LT LANE LINE

TEMPORARY 24" STOP BAR, PAINT
 DURABLE 24" STOP BAR, TYPE I TAPE
 STA 117+81 LT (VT 100)
 STA 119+77 LT (TH 354)

TEMPORARY LETTER OR SYMBOL, PAINT
 STA 117+83 LT - "STOP" (VT 100)
 STA 119+73 LT - "STOP" (TH 354)
 STA 120+07 LT - LEFT TURN ARROW
 STA 121+10 LT - LEFT TURN ARROW

CONSTRUCT SIDEWALK RAMP W/DETECTABLE WARNING SURFACE (CAST IRON)
 STA 116+62 LT (TYPE 6)
 STA 116+62 RT (TYPE 6)
 STA 117+57 LT (TYPE 6)
 STA 118+17 LT (TYPE 6)
 STA 119+24 LT (TYPE 6)
 STA 119+24 RT (TYPE 6)
 STA 119+59 LT (TYPE 1)
 STA 119+95 LT (TYPE 1)
 STA 119+95 RT (TYPE 6)

DURABLE 4" WHITE LINE, THERMOPLASTIC
 STA 116+50 TO 116+58 SOLID LT NO PARKING
 STA 116+50 TO 116+58 SOLID RT NO PARKING
 STA 116+66 TO 117+55 SOLID LT
 STA 116+66 TO 119+20 SOLID RT
 STA 118+19 TO 119+20 SOLID LT
 STA 119+28 TO 119+57 SOLID LT
 STA 119+99 TO 121+50 SOLID LT
 STA 119+99 TO 121+50 SOLID RT

TEMPORARY 4" YELLOW LINE, PAINT
 DURABLE 4" YELLOW LINE, THERMOPLASTIC
 STA 116+50 TO 116+58 SOLID LT & RT
 STA 116+66 TO 117+43 SOLID LT & RT
 STA 117+82 DOUBLE SOLID LT (VT 100)
 STA 117+83 TO 119+20 SOLID LT & RT
 STA 119+99 TO 121+50 SOLID LT & RT

TEMPORARY CROSSWALK MARKING, PAINT
 STA 116+62 LT TO RT
 STA 117+57 TO 118+17 LT
 STA 119+24 LT TO RT
 STA 119+59 TO 119+95 LT

DURABLE LETTER OR SYMBOL, TYPE I TAPE
 STA 117+83 LT - "STOP" (VT 100)
 STA 119+73 LT - "STOP" (TH 354)
 STA 120+07 LT - LEFT TURN ARROW
 STA 120+58 LT - "ONLY"
 STA 121+10 LT - LEFT TURN ARROW

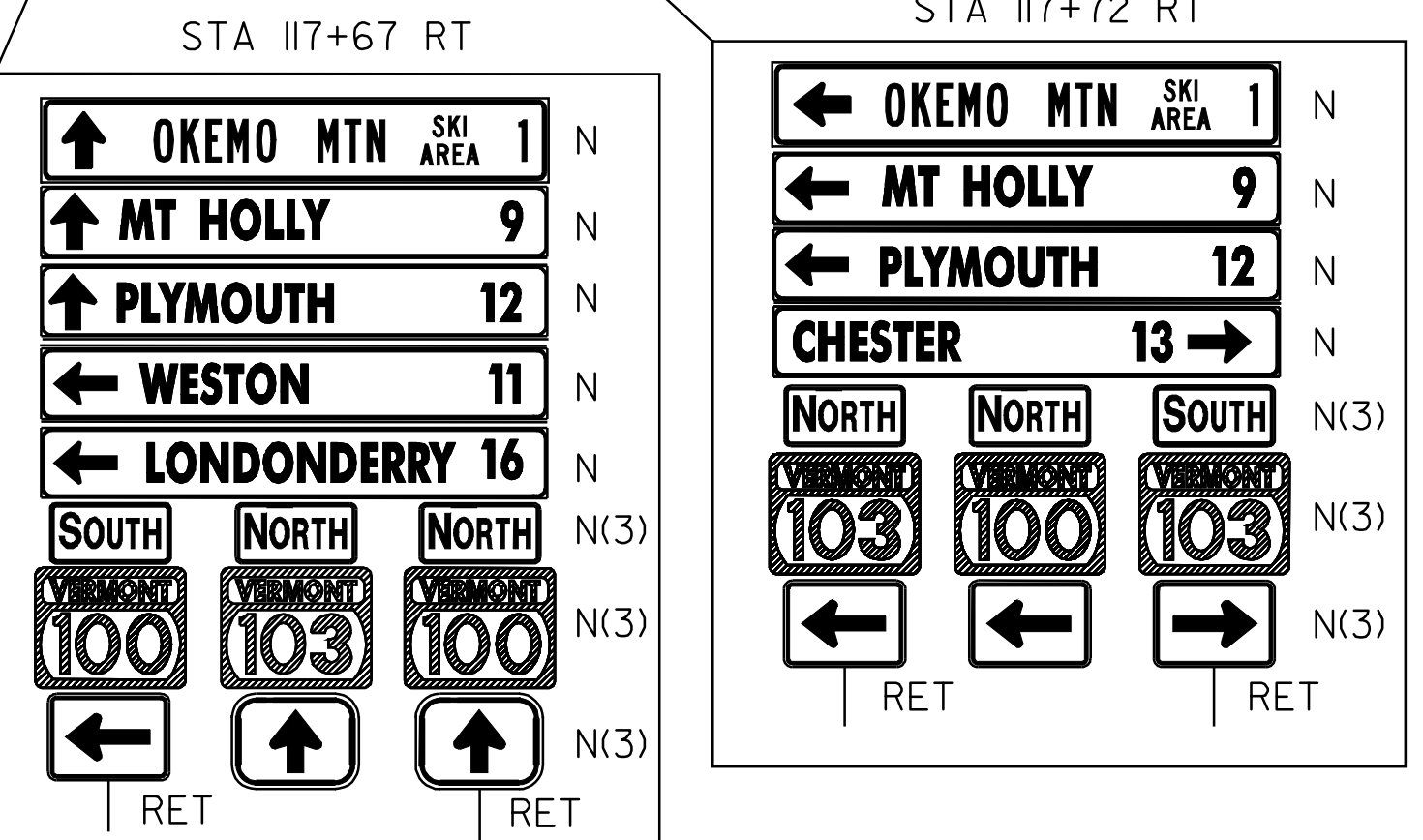
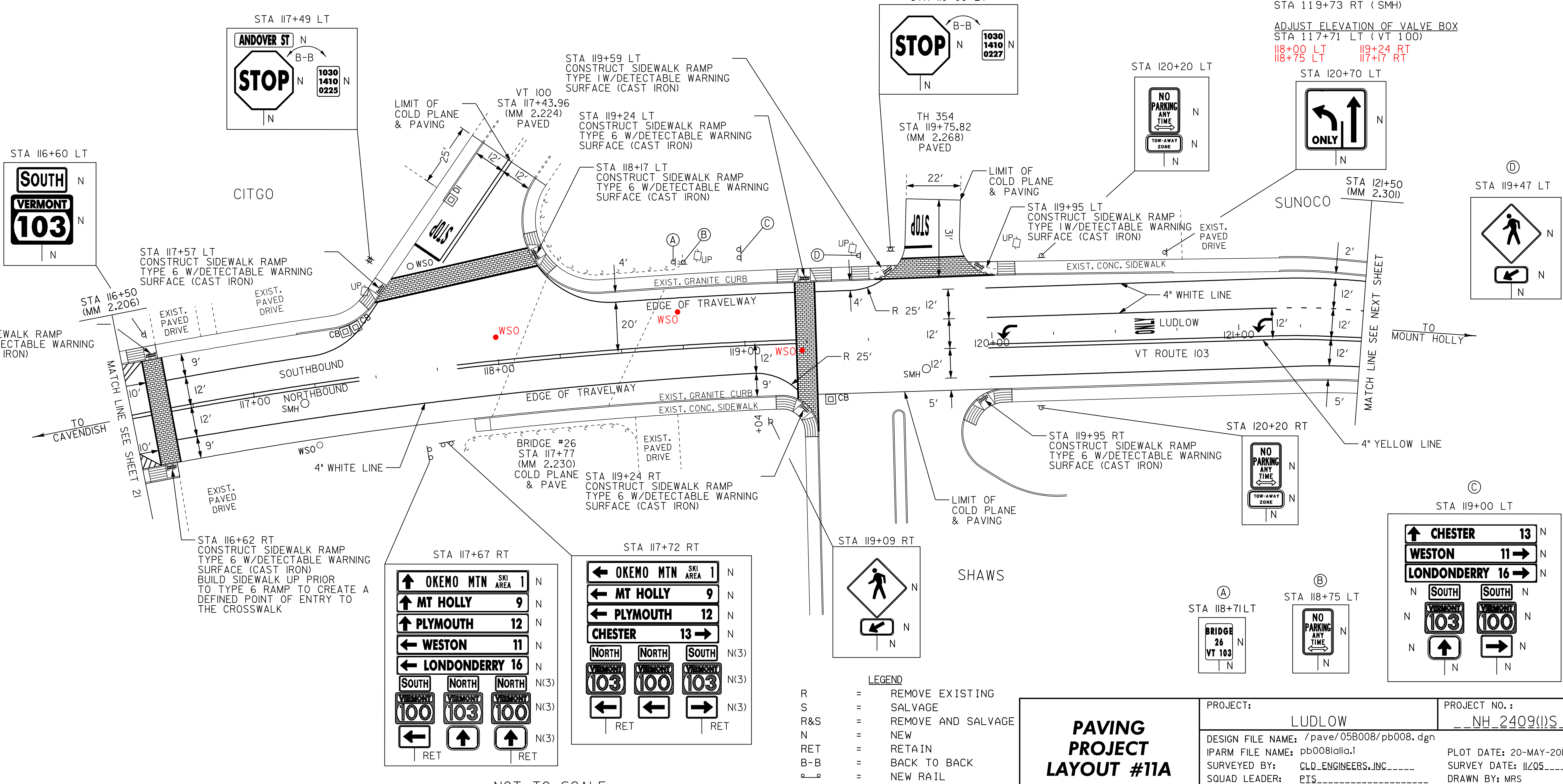
CHANGING ELEVATION OF DROP INLETS, CATCH BASINS OR MANHOLES
 STA 117+40 LT (CB) DOUBLE GRATE
 STA 117+44 LT (CB)
 STA 117+88 LT (DI) (VT 100)
 STA 119+34 RT (CB)

CHANGING ELEVATION OF SEWER MANHOLES
 STA 117+20 RT (SMH)
 STA 119+73 RT (SMH)

ADJUST ELEVATION OF VALVE BOX
 STA 117+71 LT (VT 100)
 I18+00 LT I19+24 RT
 I18+75 LT I17+17 RT

SPECIAL PROVISION
 (DURABLE CROSSWALK MARKING, IMPRINTED/COLORIZED)
 STA 116+62 LT TO RT
 STA 117+57 TO 118+17 LT
 STA 119+24 LT TO RT
 STA 119+59 TO 119+95 LT

REHAB CB, DI
 I17+88 LT



PAVING PROJECT LAYOUT #11A

PROJECT: LUDLOW PROJECT NO.: NH 2409(I)S

DESIGN FILE NAME: /paver/05B008/pb008.dgn
 IPARM FILE NAME: pb008i1a1.g
 SURVEYED BY: CLD_ENGINEERS, INC
 SQUAD LEADER: PIS
 CLD_REF_NO.: 05-0389

PLOT DATE: 20-MAY-2010 14:
 SURVEY DATE: 11/05
 DRAWN BY: MRS
 SHEET: 23 OF 51

NOT TO SCALE