

TEMPORARY 4" WHITE LINE, PAINT  
 STA 91+50 TO 95+50 SOLID LT  
 STA 91+50 TO 94+74 SOLID RT  
 STA 95+12 TO 95+50 SOLID RT

DURABLE 4" WHITE LINE, THERMOPLASTIC  
 STA 91+50 TO 95+50 SOLID LT  
 STA 91+50 TO 94+74 SOLID LT & RT  
 STA 95+12 TO 95+50 SOLID RT

TEMPORARY 4" YELLOW LINE, PAINT  
 DURABLE 4" YELLOW LINE, THERMOPLASTIC  
 STA 91+50 TO 94+74 SOLID LT & RT  
 STA 94+94 DOUBLE SOLID RT (TH 316)  
 STA 95+14 TO 95+50 SOLID LT & RT

TEMPORARY 24" STOP BAR, PAINT  
 DURABLE 24" STOP BAR, TYPE I TAPE  
 STA 94+94 RT (TH 316)

TEMPORARY LETTER OR SYMBOL, PAINT  
 DURABLE LETTER OR SYMBOL, TYPE I TAPE  
 STA 95+01 RT - " STOP (TH 316)

TEMPORARY CROSSWALK MARKING, PAINT  
 STA 94+79 TO 95+09 RT

SPECIAL PROVISION  
 (DURABLE CROSSWALK MARKING, IMPRINTED/COLORIZED)  
 STA 94+79 TO 95+09 RT

DURABLE 8" WHITE LINE, THERMOPLASTIC  
 STA 94+59 TO 94+71 SOLID LT SHOULDER HATCHING

TEMPORARY 8" WHITE LINE, PAINT  
 STA 94+59 TO 94+71 SOLID LT SHOULDER HATCHING

CONSTRUCT SIDEWALK RAMP W/DETECTABLE WARNING  
 SURFACE (CAST IRON)  
 STA 94+79 RT (TYPE 1)  
 STA 95+09 RT (TYPE 1)

CHANGING ELEVATION OF DROP INLETS, CATCH BASINS OR MANHOLES  
 STA ~~94+73 RT (DI)~~  
 94+64 LT

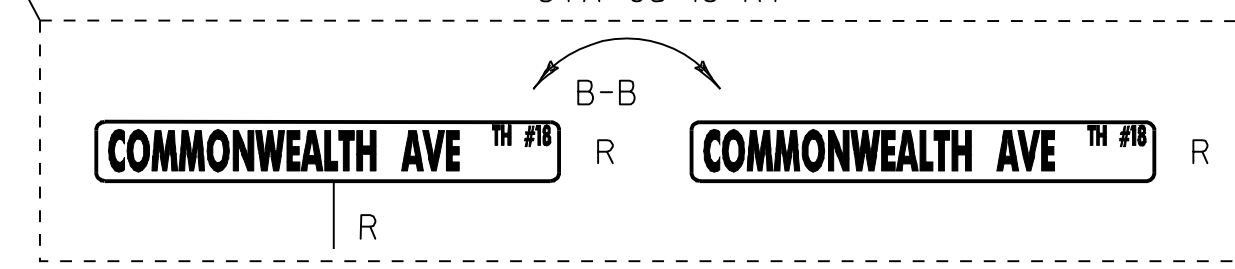
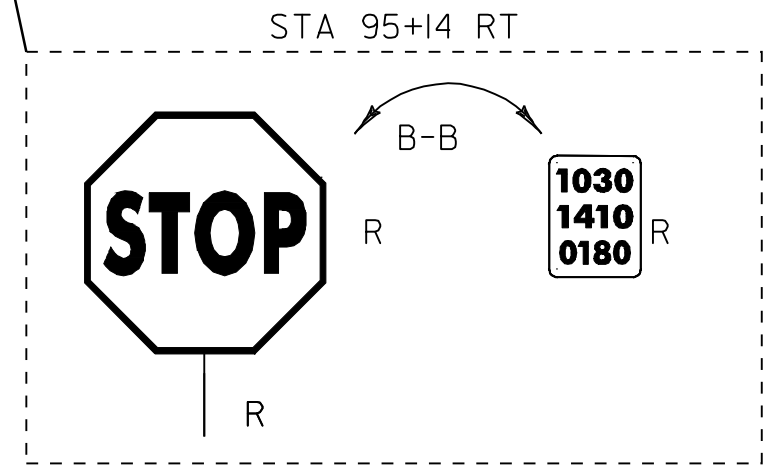
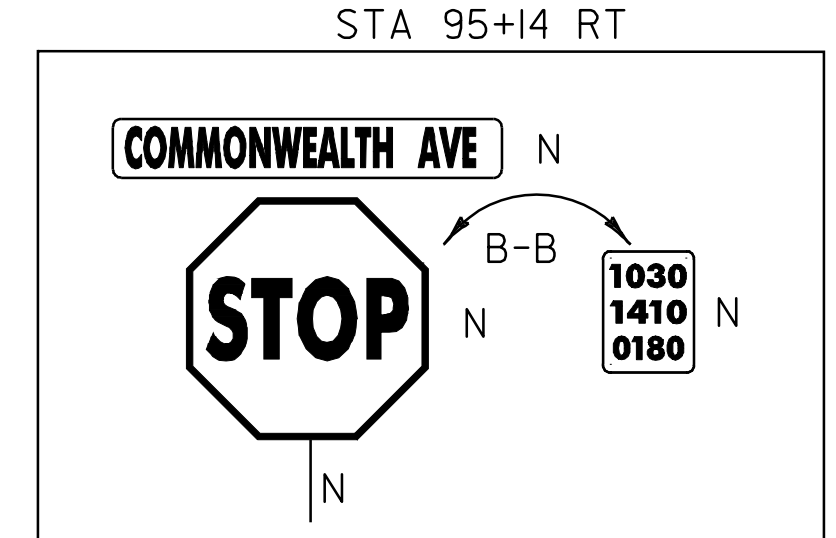
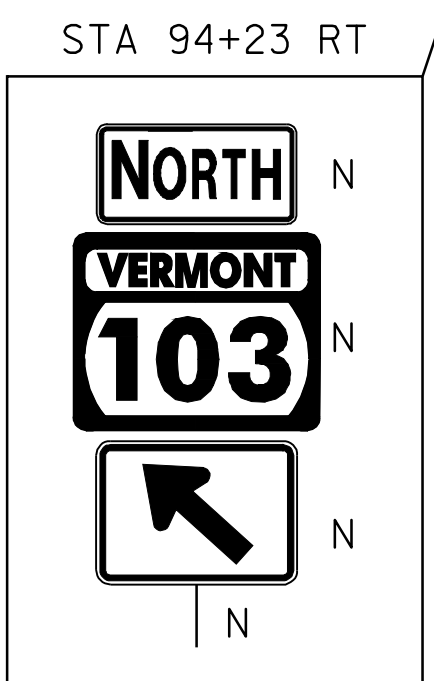
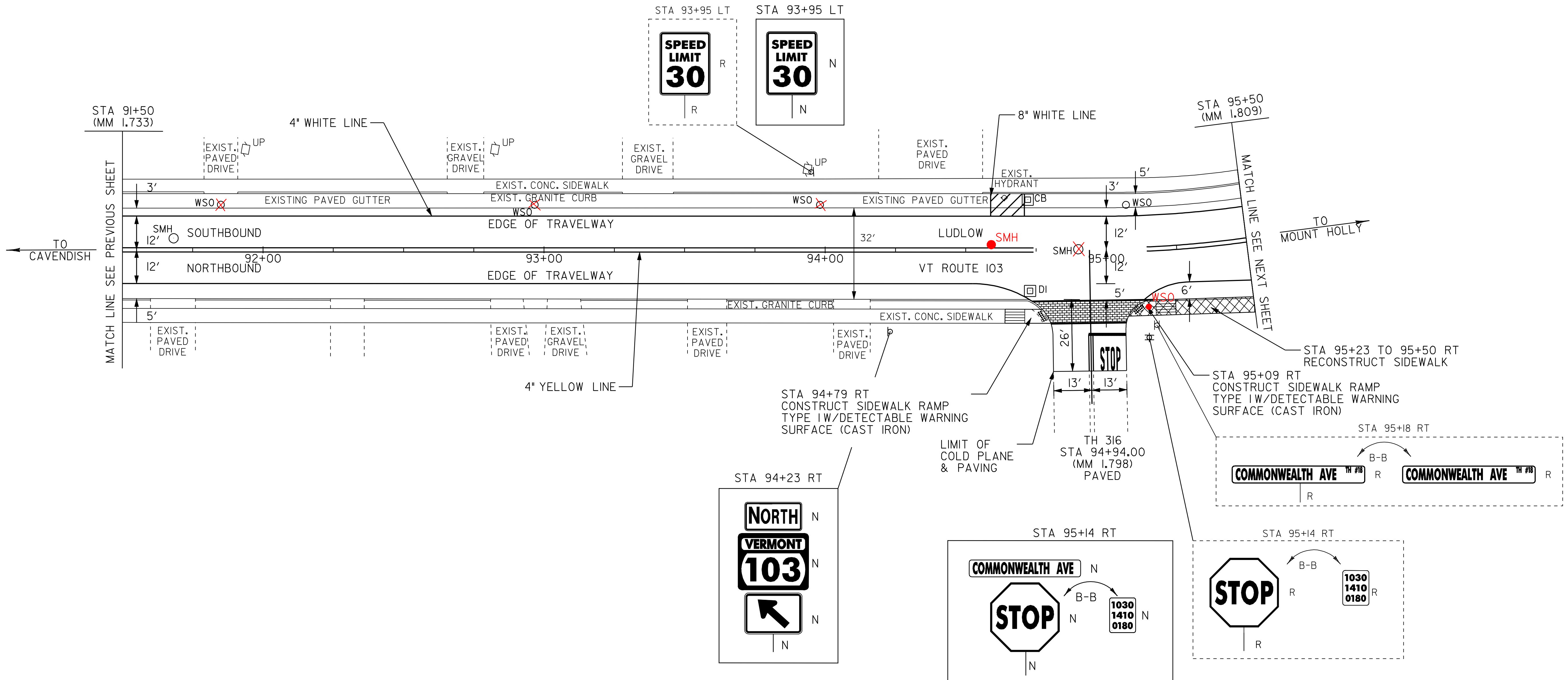
REHAB DROP INLETS, CATCH BASINS, OR MANHOLES, CLASS I  
 STA ~~94+64 LT (CB)~~  
 94+73 RT (DI)

CHANGING ELEVATION OF SEWER MANHOLES  
 STA 91+68 LT (SMH)  
 STA ~~94+90 CL (SMH)~~  
 94+64

ADJUST ELEVATION OF VALVE BOX  
 STA ~~91+85 LT (WSO)~~  
 STA ~~92+97 LT (WSO)~~  
 STA ~~93+98 LT (WSO)~~  
 STA 95+07 LT (WSO)  
 95+07 RT

EXCAVATION OF SURFACES AND PAVEMENTS  
 STA 95+07 TO 95+50 RT

REMOVING SIGNS  
 AS SHOWN - 5



- LEGEND
- R = REMOVE EXISTING
  - S = SALVAGE
  - R&S = REMOVE AND SALVAGE
  - N = NEW
  - RET = RETAIN
  - B-B = BACK TO BACK
  - = NEW RAIL
  - - - = EXISTING RAIL

**PAVING PROJECT LAYOUT #6**

PROJECT:	LUDLOW	PROJECT NO.:	NH_2409(I)S
DESIGN FILE NAME:	/pave/05B008/pb008.dgn	PLOT DATE:	20-MAY-2010 14:3
IPARM FILE NAME:	pb008ia06.i	SURVEY DATE:	11/205
SURVEYED BY:	CLD_ENGINEERS, INC	DRAWN BY:	MRS
SQUAD LEADER:	PIS	SHEET:	17 OF 51
CLD_REF_NO.:	05-Q389		

NOT TO SCALE