

TEMPORARY 4" WHITE LINE, PAINT
 STA 86+00 TO 88+70 SOLID LT & RT
 STA 88+73 LT (TH 324)
 STA 88+78 TO 91+50 SOLID RT
 STA 88+98 LT (TH 324)
 STA 89+08 TO 91+50 SOLID LT

DURABLE 4" WHITE LINE, THERMOPLASTIC
 STA 86+00 TO 88+70 SOLID LT & RT
 STA 88+73 LT (TH 324)
 STA 88+78 TO 91+50 SOLID RT
 STA 88+98 LT (TH 324)
 STA 89+08 TO 91+50 SOLID LT

TEMPORARY 4" YELLOW LINE, PAINT
 DURABLE 4" YELLOW LINE, THERMOPLASTIC
 STA 86+00 TO 88+70 SOLID LT & RT
 STA 88+88 DOUBLE SOLID LT (TH 324)
 STA 89+08 TO 91+50 SOLID LT & RT

TEMPORARY 24" STOP BAR, PAINT
 DURABLE 24" STOP BAR, TYPE I TAPE
 STA 88+88 LT (TH 324)

TEMPORARY LETTER OR SYMBOL, PAINT
 DURABLE LETTER OR SYMBOL, TYPE I TAPE
 STA 88+77 LT - "STOP" (TH 324)

DURABLE 8" WHITE LINE, THERMOPLASTIC
 STA 88+32 TO 88+70 SOLID LT SHOULDER HATCHING

DURABLE 8" WHITE LINE, PAINT
 STA 88+32 TO 88+70 SOLID LT SHOULDER HATCHING

TEMPORARY CROSSWALK MARKING, PAINT
 STA 88+72 LT TO RT
 STA 88+72 TO 89+02 LT

SPECIAL PROVISION
 (DURABLE CROSSWALK MARKING, IMPRINTED/COLORIZED)
 STA 88+72 LT TO RT
 STA 88+72 TO 89+02 LT

CONSTRUCT SIDEWALK RAMP W/DETECTABLE
 WARNING SURFACE (CAST IRON)
 STA 88+72 RT (TYPE 2)
 STA 88+72 LT (TYPE 6)
 STA 89+02 LT (TYPE 6)

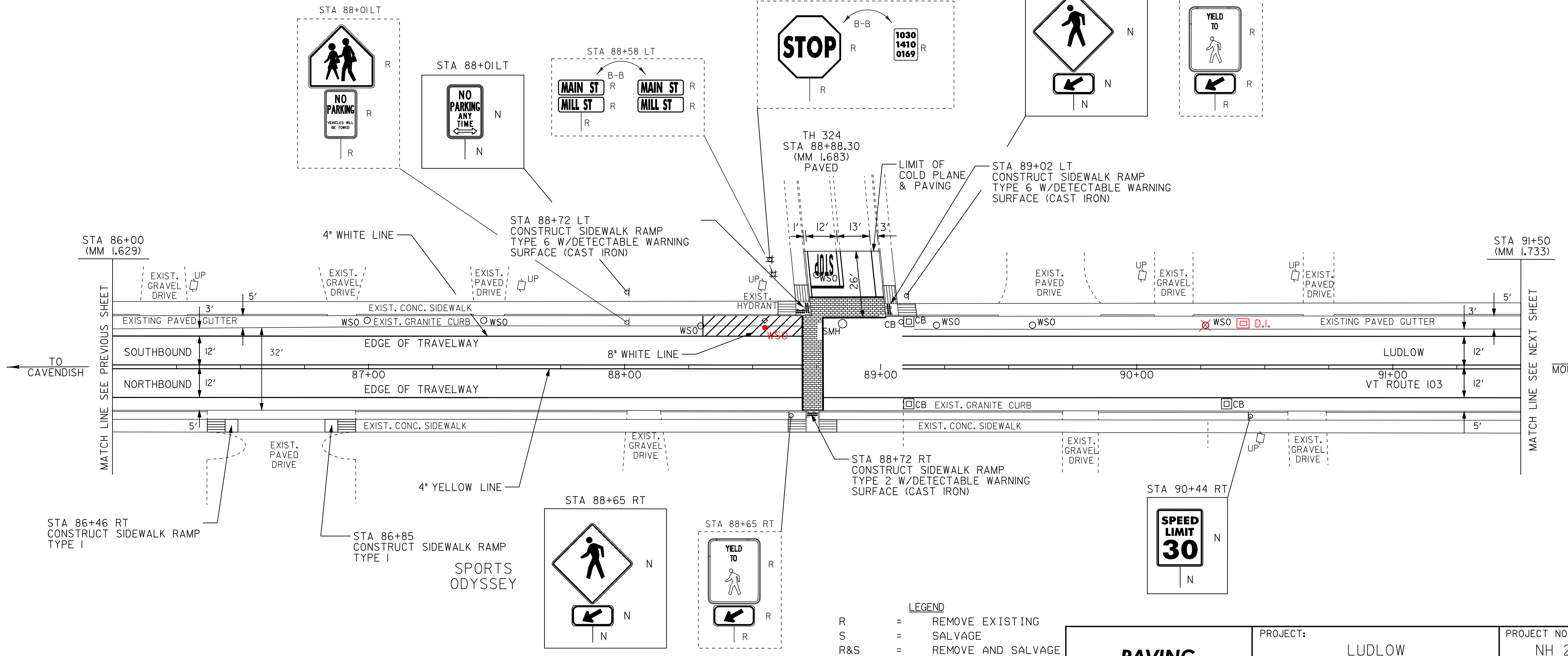
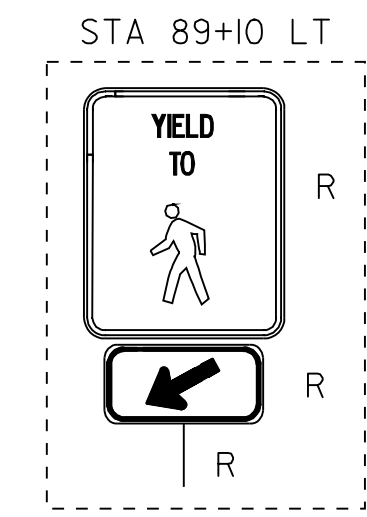
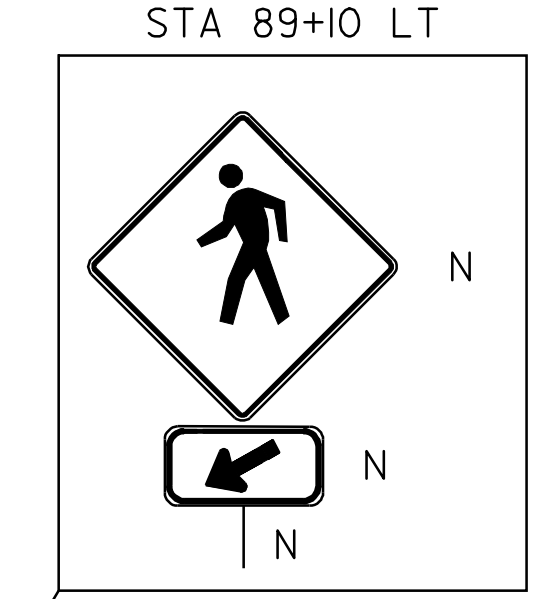
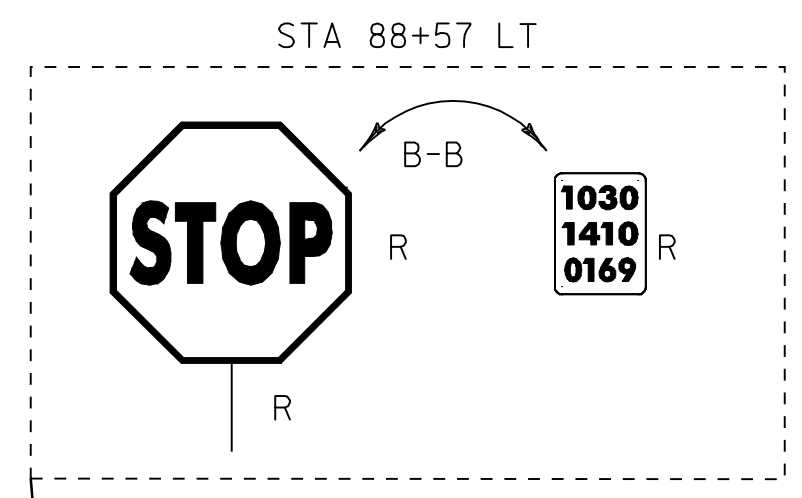
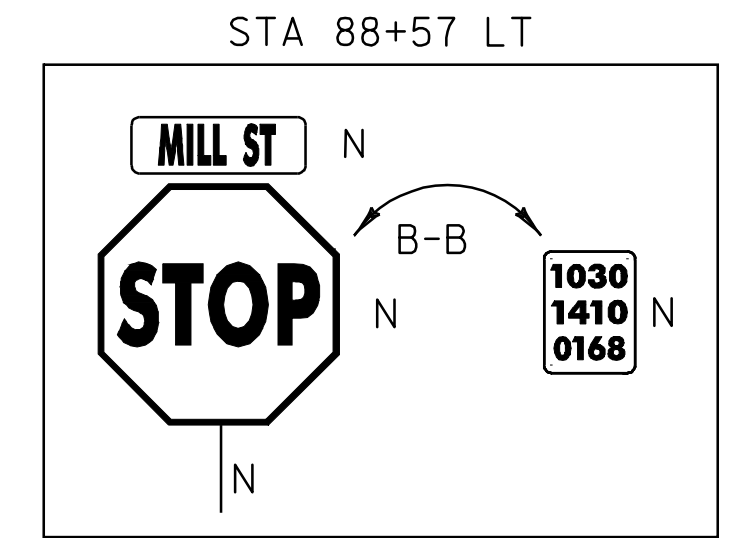
CONSTRUCT SIDEWALK RAMP
 STA 86+46 RT (TYPE 1)
 STA 86+85 RT (TYPE 1)

REPAIRED BY
 TOWN (I)
 NEW CATCH BASIN

CHANGING ELEVATION OF DROP INLETS,
 CATCH BASINS OR MANHOLES
 STA 89+08 LT (CB)
 STA 89+11 LT (CB)
 STA 89+11 RT (CB)
 STA 90+35 RT (CB)
 90+44 LT NEW D.I. BY TOWN
 CHANGING ELEVATION SEWER MANHOLES
 STA 88+85 LT (SMH)

REMOVING SIGNS
 AS SHOWN - 12

ADJUST ELEVATION OF VALVE BOX
 STA 86+99 LT (WSO)
 STA 87+45 LT (WSO)
 STA 88+30 LT (WSO)
 STA 88+75 LT (WSO) (TH 324)
 STA 89+22 LT (WSO)
 STA 89+59 LT (WSO)
 STA 90+27 LT (WSO)
 88+55 LT (WSO)



- LEGEND
- R = REMOVE EXISTING
 - S = SALVAGE
 - R&S = REMOVE AND SALVAGE
 - N = NEW
 - RET = RETAIN
 - B-B = BACK TO BACK
 - = NEW RAIL
 - - - = EXISTING RAIL

PAVING PROJECT LAYOUT #5

PROJECT:	LUDLOW	PROJECT NO.:	NH_2409(I)S
DESIGN FILE NAME:	/pave/05B008/pb008.dgn	PLOT DATE:	20-MAY-2010
IPARM FILE NAME:	pb008la05.i	SURVEY DATE:	11/05
SURVEYED BY:	CLD_ENGINEERS, INC	DRAWN BY:	MRS
SQUAD LEADER:	PIS	SHEET:	16 OF 51
CLD_REF_NO.:	05-0389		

NOT TO SCALE