

TEMPORARY 4" WHITE LINE, PAINT  
 STA 81+00 TO 81+60 SOLID LT & RT  
 STA 82+00 TO 83+10 SOLID RT  
 STA 81+68 TO 86+00 SOLID LT  
 STA 83+45 TO 86+00 SOLID RT

DURABLE 4" WHITE LINE, THERMOPLASTIC  
 STA 81+00 TO 81+60 SOLID LT & RT  
 STA 82+00 TO 83+10 SOLID RT  
 STA 81+68 TO 86+00 SOLID LT  
 STA 83+45 TO 86+00 SOLID RT

TEMPORARY 4" YELLOW LINE, PAINT  
 DURABLE 4" YELLOW LINE, THERMOPLASTIC  
 STA 81+00 TO 81+60 SOLID LT & RT  
 STA 82+00 TO 83+05 SOLID LT & RT  
 STA 83+25 DOUBLE SOLID RT (TH 320)  
 STA 83+45 TO 86+00 SOLID LT & RT

DURABLE 8" WHITE LINE, THERMOPLASTIC  
 STA 83+57 TO 83+69 SOLID LT SHOULDER HATCHING

TEMPORARY 8" WHITE LINE, PAINT  
 STA 83+57 TO 83+69 SOLID LT SHOULDER HATCHING

TEMPORARY 24" STOP BAR, PAINT  
 DURABLE 24" STOP BAR, TYPE ITAPE  
 STA 83+30 RT (TH 320)

TEMPORARY LETTER OR SYMBOL, PAINT  
 DURABLE LETTER OR SYMBOL, TYPE ITAPE  
 STA 83+30 RT - "STOP" (TH 320)  
 STA 85+22 LT - "SCHOOL"

TEMPORARY CROSSWALK MARKING, PAINT  
 STA 81+63 LT TO RT  
 STA 83+12 TO 83+41 RT

SPECIAL PROVISION  
 (DURABLE CROSSWALK MARKING, IMPRINTED/COLORIZED)  
 STA 81+63 LT TO RT  
 STA 83+12 TO 83+41 RT

CONSTRUCT SIDEWALK RAMP W/DETECTABLE  
 WARNING SURFACE (CAST IRON)

STA 81+63 LT (TYPE 6)  
 STA 81+63 RT (TYPE 6)  
 STA 83+12 RT (TYPE 1)  
 STA 83+41 RT (TYPE 1)

CHANGING ELEVATION SEWER MANHOLES

STA 81+90 LT (SMH)  
 STA 85+98 RT

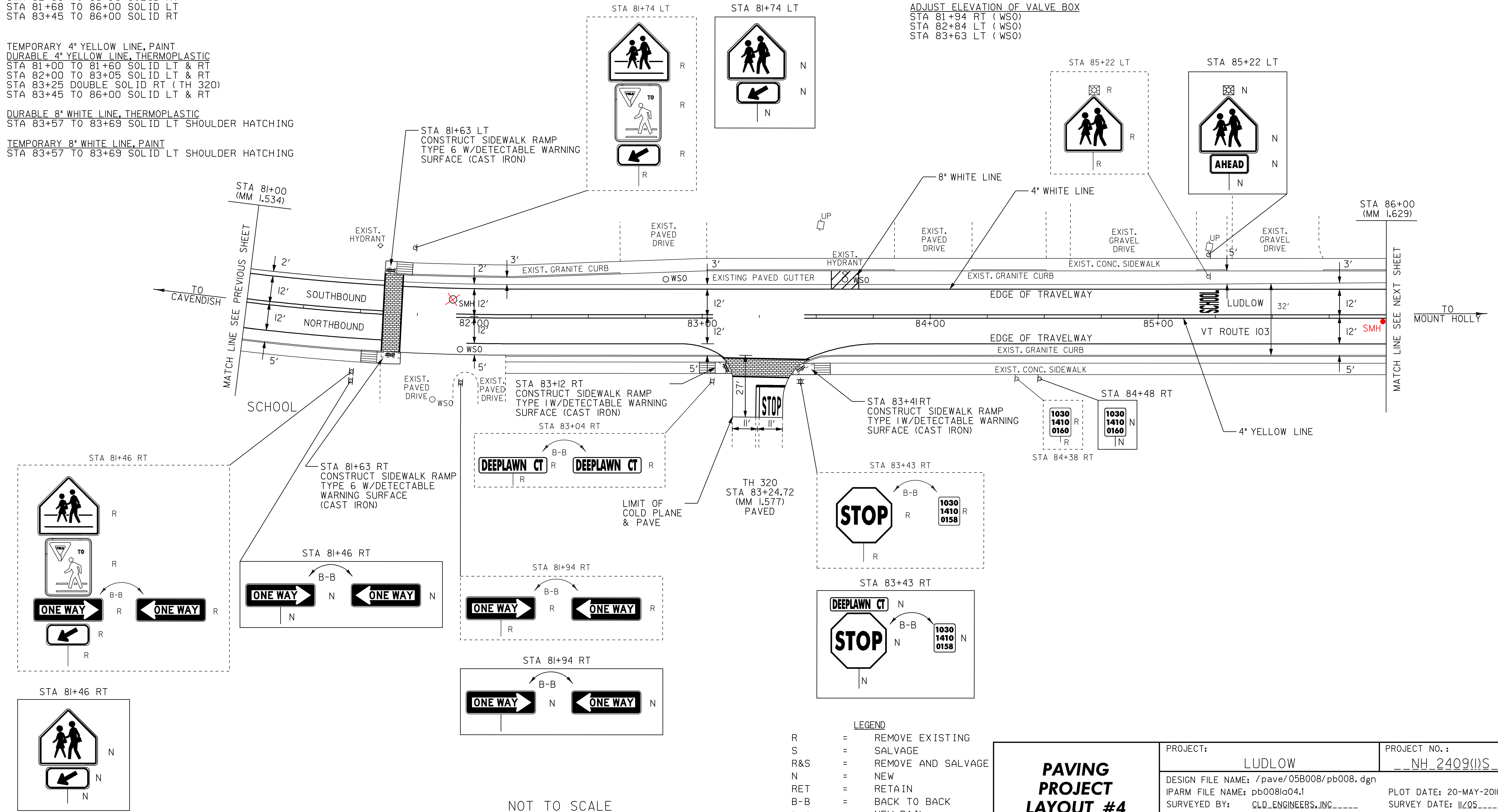
ADJUST ELEVATION OF VALVE BOX

STA 81+94 RT (WSO)  
 STA 82+84 LT (WSO)  
 STA 83+63 LT (WSO)

THINNING AND TRIMMING FOR SIGNS  
 STA 81+46 RT

FLASHING BEACON, GROUND MOUNTED  
 STA 85+22 LT

REMOVING SIGNS  
 AS SHOWN - 16



NOT TO SCALE

- LEGEND**
- R = REMOVE EXISTING
  - S = SALVAGE
  - R&S = REMOVE AND SALVAGE
  - N = NEW
  - RET = RETAIN
  - B-B = BACK TO BACK
  - = NEW RAIL
  - - - = EXISTING RAIL

<h3>PAVING PROJECT LAYOUT #4</h3>	PROJECT: LUDLOW	PROJECT NO.: NH_2409(I)S
	DESIGN FILE NAME: /pave/05B008/pb008.dgn	PLOT DATE: 20-MAY-2010 14:
	IPARM FILE NAME: pb008id04.1	SURVEY DATE: 11/205
	SURVEYED BY: CLD_ENGINEERS, INC	DRAWN BY: MRS
SQUAD LEADER: PIS	CLD_REF_NO.: 05-0389	SHEET: 15 OF 51