

DELINEATORS W/ STEEL POSTS		
199+00	LT & RT	2
200+00	LT & RT	2
201+00	LT & RT	2
202+00	LT & RT	2
203+00	LT & RT	2
204+00	LT & RT	2
205+00	LT & RT	2
14 EA		

REMOVE AND RESET LIGHT POLE (MOD. - FLAG POLE)  
200+33 - 200+49 LT (3 EA)

CONSTRUCT DRIVE  
200+60 LT 24' PAVED  
YIELDING MARKER POSTS  
10 EA

STEEL BEAM GUARDRAIL  
203+00 - 206+25 LT 325'  
80 00 214.5  
ANCHOR FOR STEEL BEAM GUARDRAIL  
1 EA  
REMOVAL AND DISPOSAL OF GUARDRAIL  
205+60 - 206+25 LT  
00

STONE FILL, TYPE I FOR SLOPE STABILIZATION  
200+60 - 203+20 RT  
STONE FILL, TYPE III FOR SLOPE STABILIZATION  
200+60 - 203+20 RT  
206+20 +/- LT 130' +/-  
PLUG EXISTING 4" STEEL PIPE

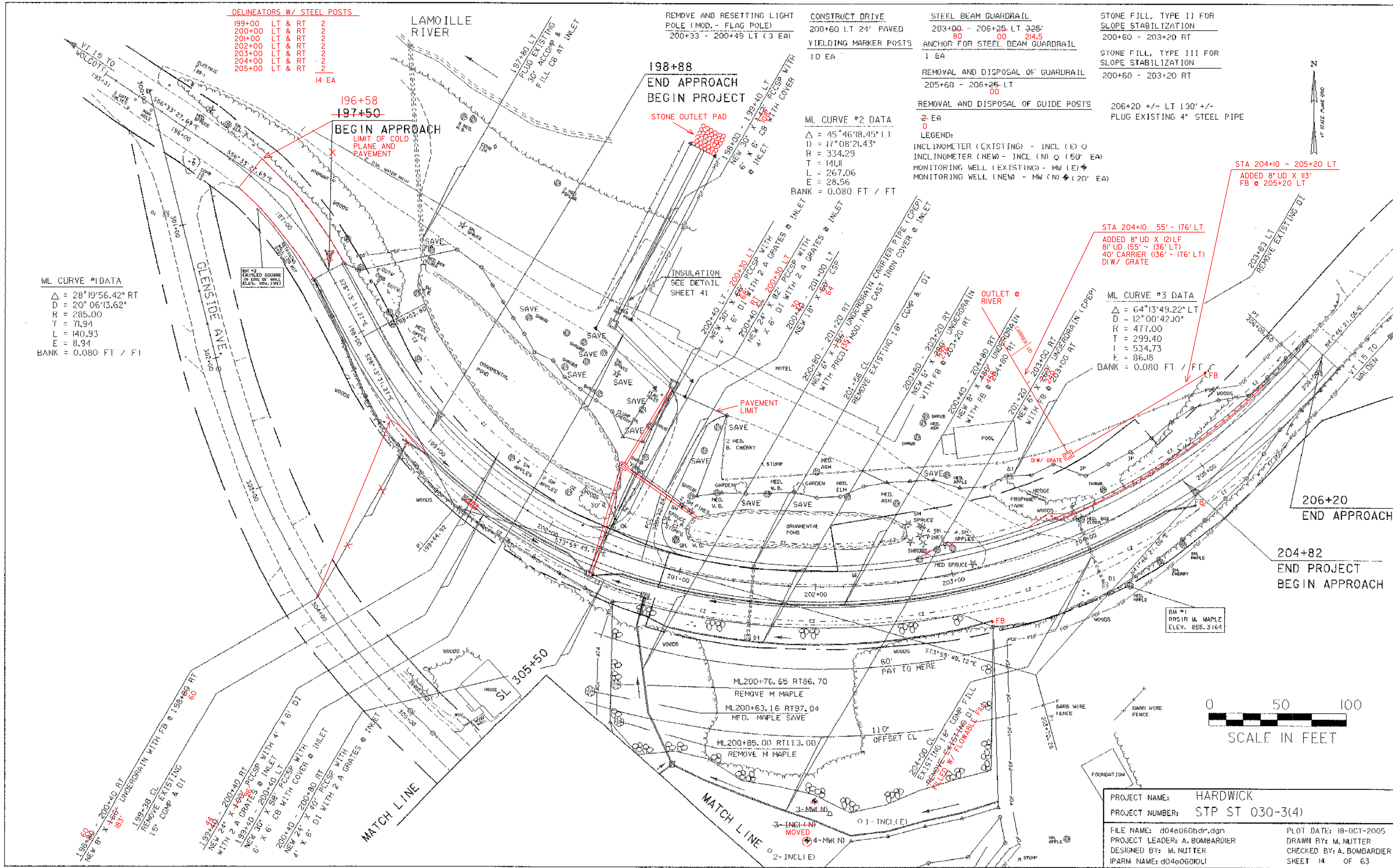
ML CURVE #2 DATA  
Δ = 45°46'18.45" LT  
D = 17°08'21.43"  
R = 334.29  
T = 141.11  
L = 267.06  
E = 28.56  
BANK = 0.080 FT / FT

REMOVAL AND DISPOSAL OF GUIDE POSTS  
0 EA  
LEGEND:  
INCLINOMETER (EXISTING) - INCL (E) ○  
INCLINOMETER (NEW) - INCL (N) ○ (50' EA)  
MONITORING WELL (EXISTING) - MW (E) ♦  
MONITORING WELL (NEW) - MW (N) ♦ (20' EA)

ML CURVE #1 DATA  
Δ = 28°19'56.42" RT  
D = 20°06'13.62"  
R = 285.00  
T = 71.94  
L = 140.93  
E = 8.94  
BANK = 0.080 FT / FT

STA 204+00 - 55' - 176' LT  
ADDED 8" UD X 12LF  
8" UD (55' - 136' LT)  
40' CARRIER (136' - 176' LT)  
DI W/ GRATE

ML CURVE #3 DATA  
Δ = 64°13'49.22" LT  
D = 12°00'42.10"  
R = 477.00  
T = 299.40  
L = 534.73  
E = 86.18  
BANK = 0.080 FT / FT



206+20  
END APPROACH

204+82  
END PROJECT  
BEGIN APPROACH



PROJECT NAME:	HARDWICK
PROJECT NUMBER:	STP ST 030-3(4)
FILE NAME:	d04e06bdr.dgn
PROJECT LEADER:	A. BOMBARDIER
DESIGNED BY:	M. NUTTER
IPARM NAME:	d04e060101
PLOT DATE:	18-OCT-2005
DRAWN BY:	M. NUTTER
CHECKED BY:	A. BOMBARDIER
SHEET 14 OF 63	

3MW ELIMINATED 3 - INCL (N) MOVED TO 202+40 208' RT