

INDEX OF SHEETS
SEE SHEET 2

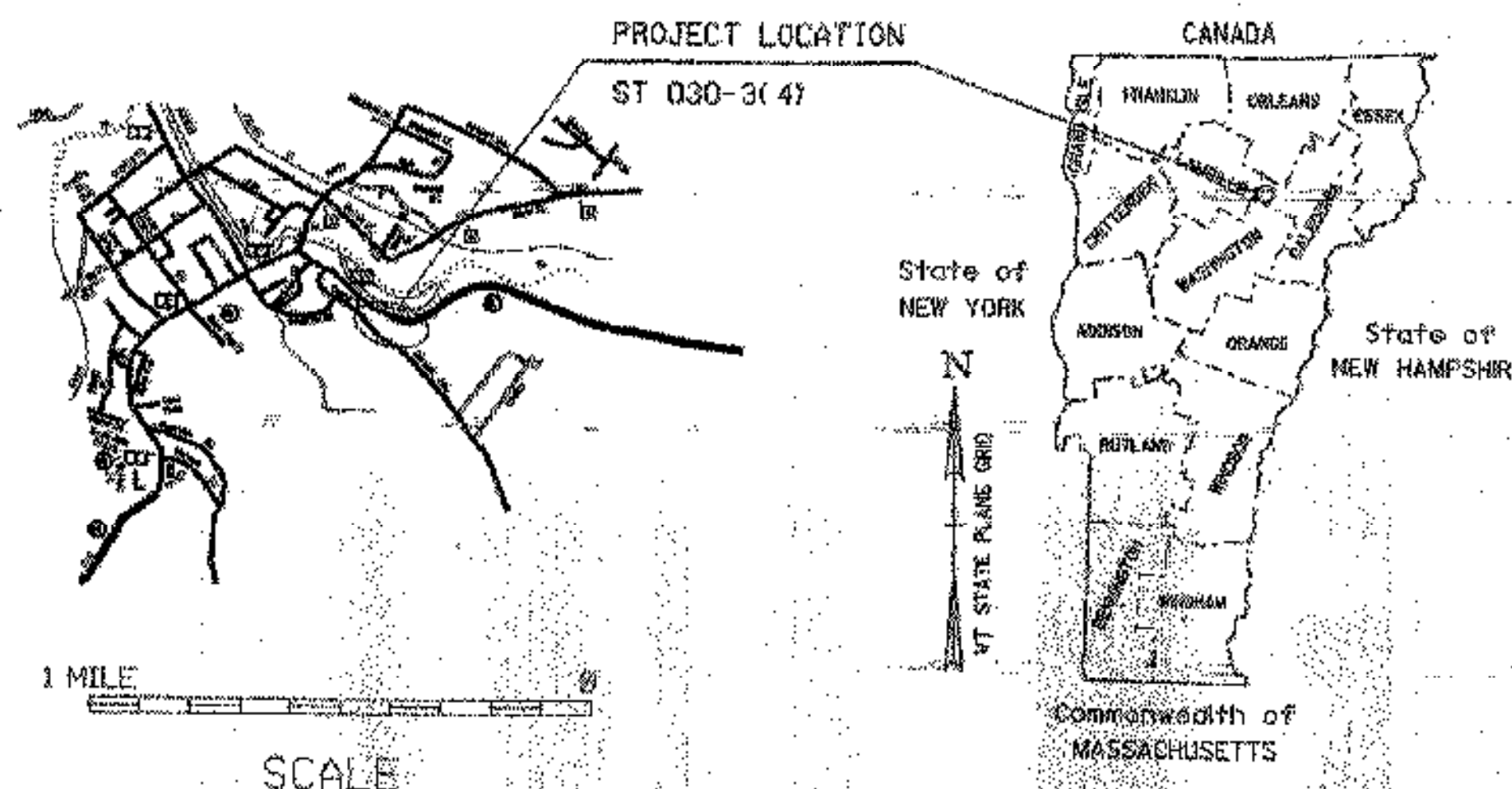
STATE OF VERMONT AGENCY OF TRANSPORTATION



PROPOSED IMPROVEMENT TOWN OF HARDWICK COUNTY OF CALEDONIA VT. ROUTE 15 (MINOR ARTERIAL)

BEGINNING AT A POINT ON VT. ROUTE 15, EAST OF THE INTERSECTION OF GLENSIDE AVE. AT MILEMARKER 3.63, IN THE TOWN OF HARDWICK, AND EXTENDING EASTERLY 0.11 MILES TO MILEMARKER 3.74

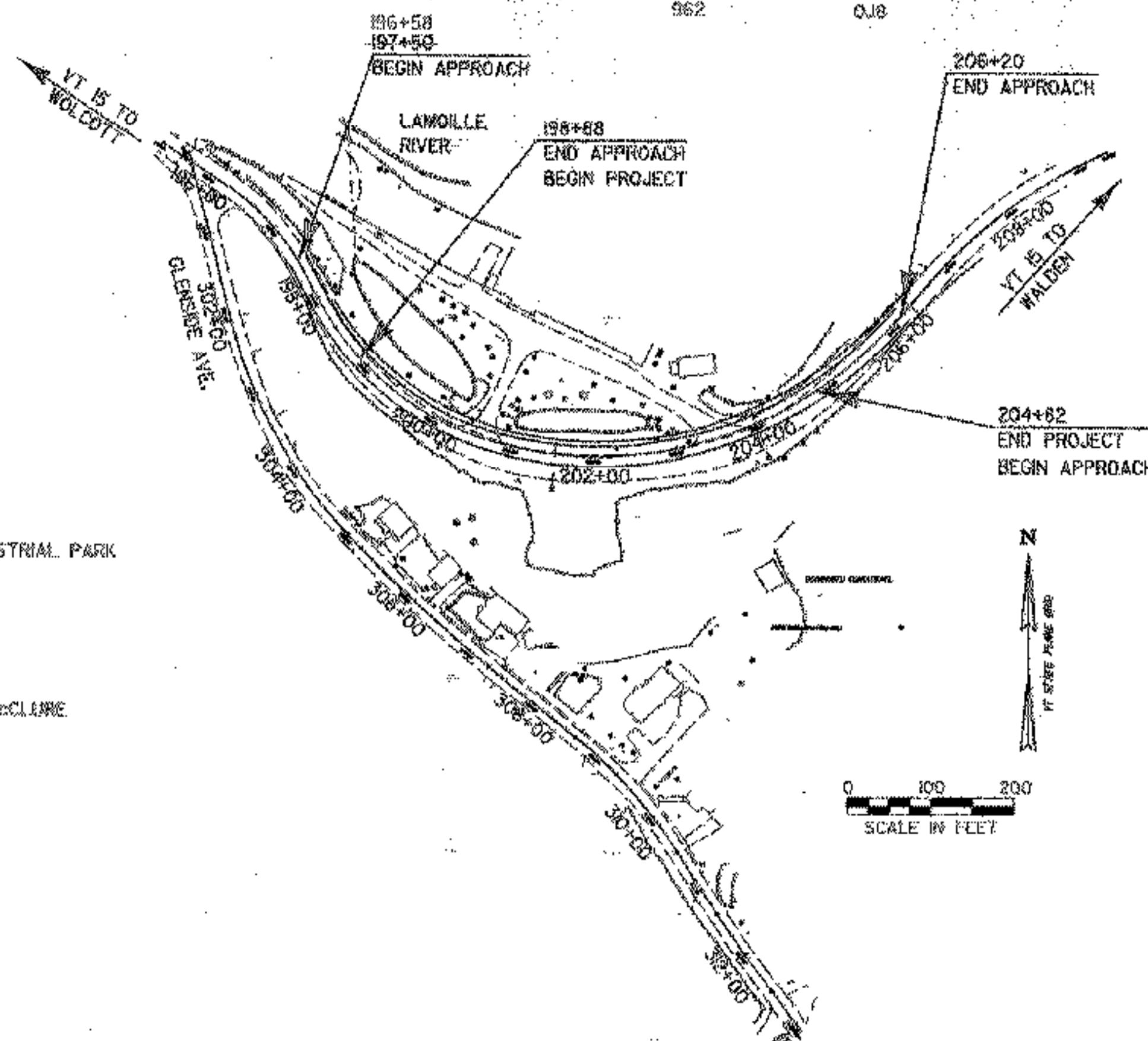
WORK TO BE PERFORMED UNDER THIS PROJECT INCLUDES MINOR RE-ALIGNMENT OF VT. 15, INSTALLING A COUNTERBERM FOR SLOPE STABILIZATION, DRAINAGE, GUARDRAIL, PAVEMENT AND OTHER RELATED ROADWAY ITEMS.



RECORD PLANS

CONTRACTOR: E.E. PACKARD ENTERPRISES, INC., EAST MONTPELIER, VT.
RESIDENT ENGINEER: KEVIN McCLURE
CONSTRUCTION BEGAN: JUNE 16, 2006
CONSTRUCTION COMPLETE:
RECORD PLANS BY: K. McCLURE, L. NOYES, & CUP PERCE
I HEREBY CERTIFY THAT ALL THE CONSTRUCTION REQUIRED BY THIS SET OF DRAWINGS HAS BEEN ACCOMPLISHED AS INDICATED HEREIN.
BY: *Kevin McClure* RESIDENT ENGINEER
DATE: 5-15-07
NOTE: Any further information concerning final quantities, amounts or other details relative to this project may be found at Central Files in the electronic archives.

LENGTH OF ROADWAY 594 FT = 0.11 MI
LENGTH OF PROJECT 962 FT = 0.18 MI



TRAFFIC DATA

2005 ADT	=	4,600
2025 ADT	=	5,900
2025 ADTT	=	820
2025 DHV	=	670
D %	=	59
2025 I %	=	13
TOTAL ESALS (2005-2025)	=	2,956,000
TOTAL ESALS (2005-2045)	=	7,537,000

CONVENTIONAL SYMBOLS

COUNTY LINE	— — — — —
TOWN LINE	— — — — —
LIMITS OF ACCESS	— — — — —
POINT OF ACCESS	X
FENCE LINE	X — — — — — X
STONE WALL	— — — — —
TRAVELED WAY	— — — — —
GUARD RAIL	— — — — —
RAILROAD	— — — — —
SURVEY LINE	— — — — —
CULVERT	— — — — —
POWER POLE	⊕
TELEPHONE POLE	⊕
TREES	⊕
CONTROL OF ACCESS	— — — — —
PROPERTY LINE	— — — — —
R.O.W. TURNING LINE	— — — — —
SLOPE RIGHTS	— — — — —
TOP OF CUT	— — — — —
TOE OF SLOPE	— — — — —

CONTRACT START: 4-10-06
SUBSTANTIAL COMPLETE: 10-05-06
CONTRACTOR: E.E. PACKARD ENTERPRISES, INC.
ROUTE 2 LOT 3 PACKARD PACKARD INDUSTRIAL PARK
P.O. BOX 70
EAST MONTPELIER, VT 05651
RESIDENT ENGINEER: KEVIN McCLURE
RECORD PLANS COMPLETED BY LYLE NOYES & KEVIN McCLURE

SURVEYED BY: R. GILMAN
SURVEYED DATE: DEC. 2004
DATUM
VERTICAL NAVD 88
HORIZONTAL NAD 83 (96)

THESE PLANS ARE SUBJECT TO SUCH ENGINEERING CHANGES AS MAY BE REQUIRED BY THE DIRECTOR OF PROGRAM DEVELOPMENT.
CONSTRUCTION IS TO BE CARRIED ON IN ACCORDANCE WITH THESE PLANS AND THE STANDARD SPECIFICATIONS FOR CONSTRUCTION DATED 2003 AS APPROVED BY THE FEDERAL HIGHWAY ADMINISTRATION ON JANUARY 4, 2004 FOR USE ON THIS PROJECT, INCLUDING ALL SUBSEQUENT REVISIONS AND SUCH REVISED SPECIFICATIONS AND SPECIAL PROVISIONS AS ARE INCORPORATED IN THESE PLANS.
FILE NAME: d040e060bdr.dgn
IPARM NAME: d040e06011.f

DEPARTMENT OF TRANSPORTATION
FEDERAL HIGHWAY ADMINISTRATOR

APPROVED: _____ DATE _____
DIRECTOR OF PROGRAM DEVELOPMENT

APPROVED: *Richard F. ...* DATE *5-2-05*
PROJECT MANAGER: A. BOMBARDIER

PROJECT NAME: HARDWICK
PROJECT NUMBER: STP ST 030-3(4)

SHEET 1 OF 63 SHEETS