

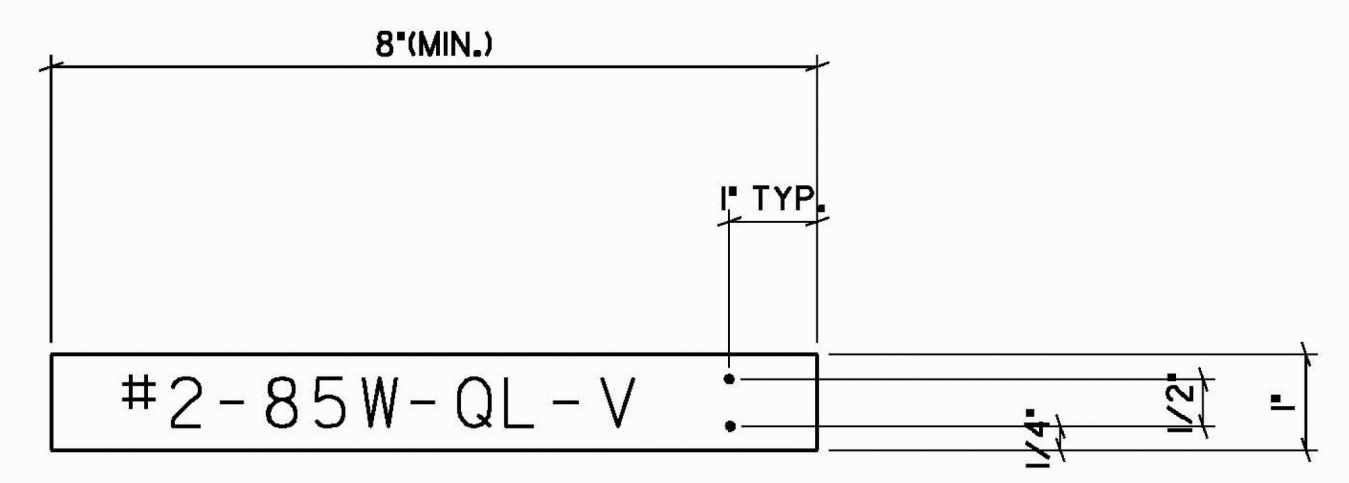
GENERAL NOTES AND SPECIFICATIONS

1. THE SCOPE OF WORK IS TO PROVIDE ALL LABOR, MATERIALS, SERVICES, SUPPLIES, TOOLS, EQUIPMENT, TRANSPORTATION, AND FACILITIES NECESSARY TO FURNISH AND INSTALL COMPLETE ELECTRICAL WORK AS CALLED FOR ON THE DRAWINGS SPECIFIED, OR AS MAY REASONABLY BE IMPLIED AS BEING INCIDENTAL TO THIS WORK.
 2. SECURE AND PAY COSTS OF PERMITS, CERTIFICATES, LICENSES, INSPECTIONS, AND APPROVALS.
 3. ALL MATERIALS AND INSTALLATION SHALL BE IN ACCORDANCE WITH THE LATEST EDITION OF THE NATIONAL ELECTRICAL CODE, AND ALL CODES, REGULATIONS AND REQUIREMENTS OF ALL MUNICIPAL, STATE, FEDERAL, UTILITY, AND OTHER PUBLIC OR PRIVATE AUTHORITIES WHICH HAVE JURISDICTION. IN EACH CASE, CODES ARE MINIMUM REQUIREMENTS.
 4. SHOP DRAWINGS: SUBMIT COMPLETE CATALOG INFORMATION FOR ALL MATERIALS AND EQUIPMENT TO BE PURCHASED AND USED ON THIS PROJECT, AS SPECIFIED ON THE DRAWINGS. DO NOT INSTALL MATERIALS OR EQUIPMENT WITHOUT APPROVAL BY THE ENGINEER. UNAPPROVED MATERIAL ALREADY INSTALLED SHALL BE SUBJECT TO REMOVAL AND REPLACEMENT WITH APPROVED MATERIALS AT THE CONTRACTOR'S EXPENSE.
 5. MATERIALS AND EQUIPMENT SHALL BE LISTED BY UNDERWRITERS' LABORATORIES AND SHALL BE INSTALLED IN ACCORDANCE WITH SUCH LISTINGS.
 6. ELECTRICAL SERVICES SHALL BE 100A, 120/240V, SINGLE PHASE, THREE WIRE SERVICE. METER SOCKET SHALL BE PER UTILITY REQUIREMENTS. SEE VAOT STANDARDS E-175 DETAIL I FOR METER/DISCONNECT STANCHION. ALL SERVICE ENTRANCE EQUIPMENT SHALL BE RATED 22 KAIC (MIN.). STANCHION SHALL INCLUDE: A 24 CIRK PANEL WITH A 100A, 240V, 2 POLE MAIN BREAKER. PROVIDE (9) 20A, 240V, 2 POLE BREAKERS FOR STREET LIGHTING AND (3) 20A, 120V, 1 POLE BREAKERS.
 7. INSTALLATION SHALL BE MADE IN ACCORDANCE WITH MANUFACTURER'S RECOMMENDATIONS.
 8. CONTRACTOR TO CONTACT DIGSAFE IN VERMONT STATE PRIOR TO COMMENCING WORK.
 9. CONTRACTOR TO CONTACT UTILITY COMPANY FOR COORDINATION OF NEW ELECTRICAL SERVICE.
 10. METER/DISCONNECT STANCHIONS SHALL INCLUDE MAIN SERVICE DISCONNECT (2 POLE, 100A, 240V), AND (6) SIX BRANCH CIRCUIT BREAKERS (2 POLE, 20A, 120V). ALL SERVICE ENTRANCE EQUIPMENT SHALL BE RATED 22 KAIC (MIN.).
 11. ORNAMENTAL STREETLIGHT SHALL BE AS IDENTIFIED ON LIGHTING DETAIL SHEET 2, OR SHALL BE AN APPROVED EQUAL.
 12. MAXIMUM OF 270 DEGREES IN TOTAL BEND SHALL BE PERMITTED IN SINGLE RUN OF CONDUIT.
 13. LIGHTS SHALL BE FUSED AT BASE WITH Y-TYPE FUSE KIT WITH WATERPROOF INSULATED SEAL "FLOOD SEAL". SIZE OF SEAL SHALL MATCH WIRE AND HAVE A 10 AMP FUSE.
 14. UTILIZE DUAL-RATED PARALLEL TAP CONNECTORS AT POLE BASES WITH INSULATED COVERS.
 15. UTILIZE APPROVED DUAL-RATED PARALLEL TAP CONNECTOR WATERTIGHT CONNECTOR, SUITABLE FOR DIRECT BURIAL IN JUNCTION BOXES, HANDHOLES AND MANHOLES.
- DEMOLITION NOTES**
16. REMOVE AND DISCONNECT ALL EXISTING ELECTRICAL EQUIPMENT WITHIN AREAS INDICATED, UNLESS OTHERWISE NOTED TO REMAIN, INCLUDING LIGHTING FIXTURES, SWITCHES, EXPOSED CONDUIT, BRANCH CIRCUIT WIRING, DEVICE BOXES, DEVICE PLATES, ETC. ALL EXPOSED ABANDONED CONDUCTORS AND CONDUITS, CUT BACK, CAP AND ABANDON ALL CONDUITS AS REQUIRED. COORDINATE REMOVAL WITH ENGINEER.
 17. EXISTING ELECTRICAL EQUIPMENT NECESSARY FOR EXISTING INSTALLATION, BUT PASSING THROUGH THE RENOVATED AREA, SHALL BE TEMPORARILY REHUNG AND PROTECTED DURING CONSTRUCTION. RESTORE, IF INTERRUPTED, ALL CONDUITS, BRANCH CIRCUITS AND FEEDERS PASSING THROUGH RENOVATED AREAS AND SERVICING UNDISTURBED AREAS.
 18. CONTRACTOR SHALL CARRY ALL COSTS RELATING TO REMOVAL AND LAWFUL DISPOSAL OF ELECTRICAL EQUIPMENT, LIGHTING FIXTURES, CONDUIT, WIRING AND ASSOCIATED DEVICES/HARDWARE. PRIOR TO ACTUAL REMOVAL OF THE EQUIPMENT, NEW STREET LIGHTING SHALL BE TESTED AND OPERATIONAL PRIOR TO REMOVAL OF EXISTING STREET LIGHTING.
 19. EQUIPMENT LAYOUT AND EXACT LAYOUT OF NEW LIGHTING FIXTURES SHALL BE DIRECTED BY THE ENGINEER/OWNER.
 20. EXISTING ELECTRICAL DEVICES AND LIGHTING FIXTURES, SHOWN ON THE LIGHTING & UTILITY PLANS, REPRESENT INFORMATION TAKEN FROM EXISTING PLANS FURNISHED BY THE OWNER AND A SITE SURVEY CONDUCTED BY LITTLE RIVER SURVEY. THE CONDITION OF THE SITE MAY HAVE CHANGED. THE CONTRACTOR IS RESPONSIBLE FOR VISITING THE SITE TO EXAMINE ALL EXISTING CONDITIONS. NO EXTRA COMPENSATION OR TIME EXTENSION WILL BE PERMITTED BECAUSE OF LACK OF COMPLIANCE WITH THIS REQUIREMENT.
 21. ALL WORK REQUIRED FOR THE DISMANTLING AND REMOVAL, OR MODIFICATION, OF EXISTING ELECTRICAL EQUIPMENT, LIGHTING CONDUIT, WIRING AND RELATED ITEMS FOR THEIR REPLACEMENT OR MODIFICATION AS HEREIN SPECIFIED OR AS MAY REASONABLY BE IMPLIED SHALL BE PAID FOR AS ITEM 900.6451 SPECIAL PROVISION (ELECTRIC DEMOLITION).

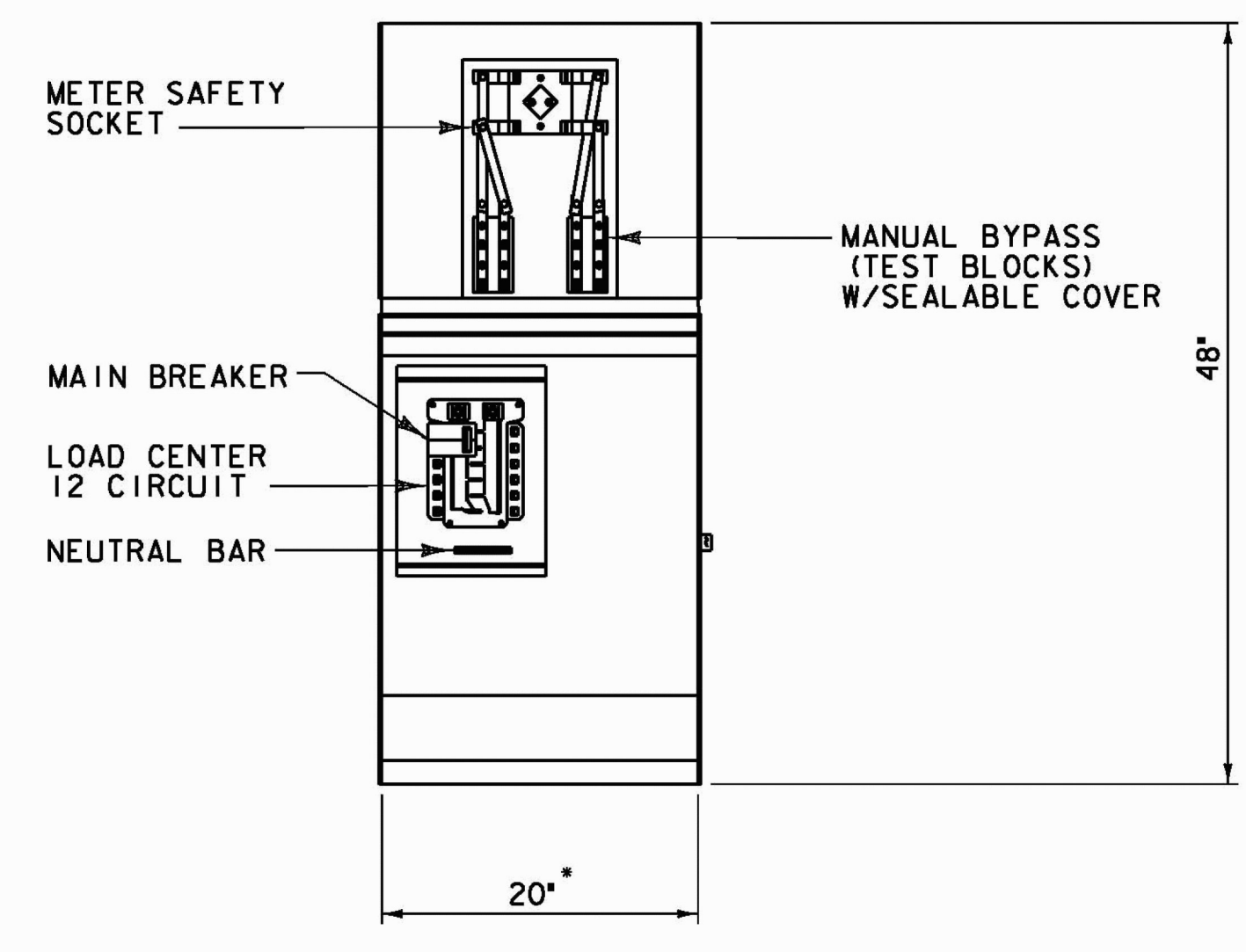
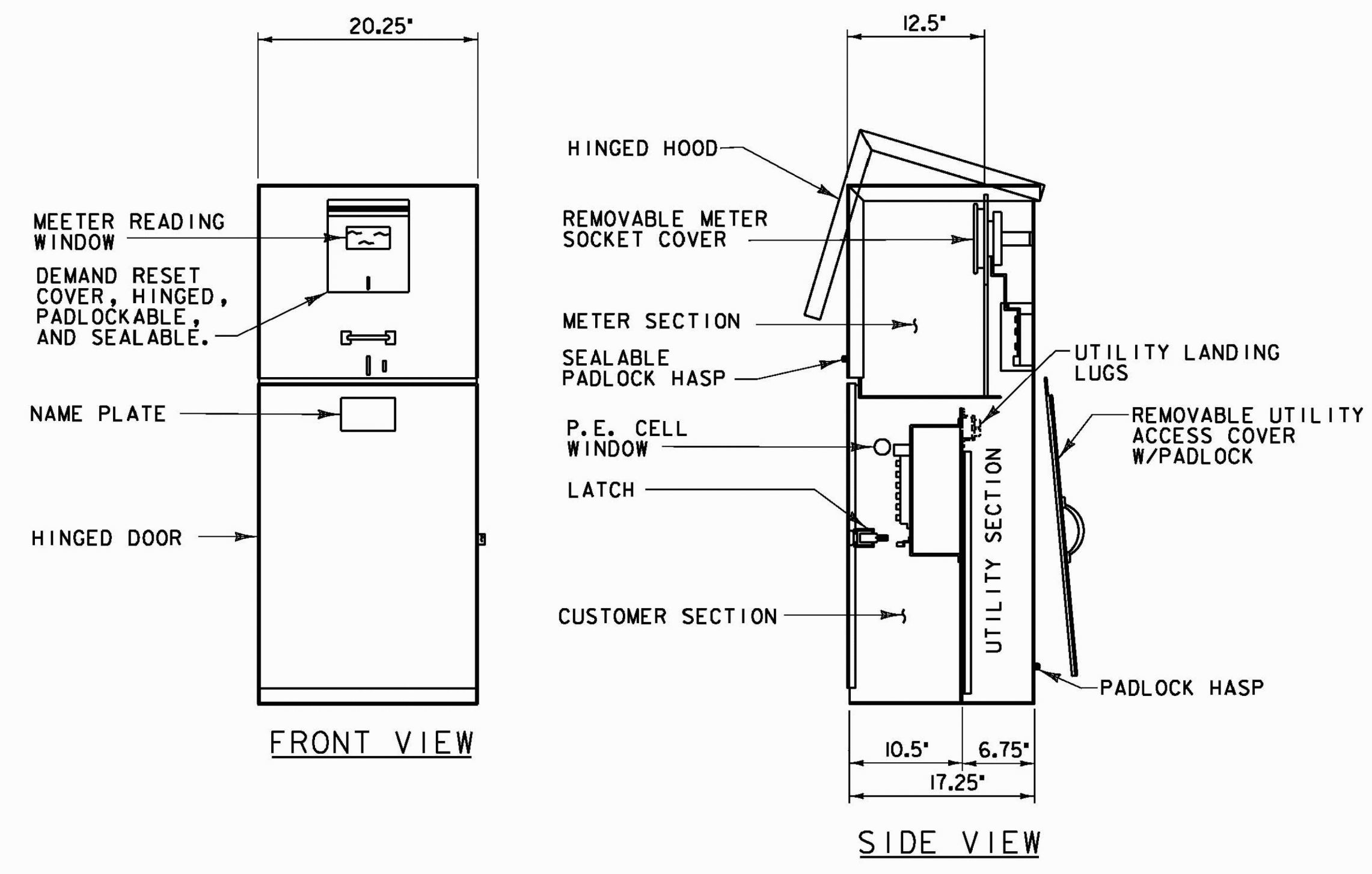
DETAILS FOR TAGS ATTACHED TO STREET LIGHT POLES

SEE ATTACHED FOR TAG DRAWING
 LEGEND: WHITE (NON-REFL.) - STAMPED PRIOR TO PRINTING/PAINTING.
 BACKGROUND: SAME AS POLE FINISH.

- NOTES:**
1. THE TAG SHALL BE MOUNTED ON ALL STREET LIGHT POLES IN SUCH A MANNER AS NOT TO BE EASILY REMOVED, SUCH AS WELDED, RIVETED, OR BOLTED WITH VANDAL PROOF STAINLESS STEEL BOLTS.
 2. THE LETTERS SHALL BE PUNCHED, STAMPED, ENGRAVED, OR PHOTO-ETCHED. PUNCHING, STAMPING OR ENGRAVING SHALL PENETRATE AT LEAST 1/2 THE BASE MATERIAL THICKNESS.
 3. THE BASE MATERIAL FOR THE TAG SHALL BE ALUMINUM WITH A MINIMUM THICKNESS OF 0.1000 INCHES.
 4. THE TAG SHALL BE ATTACHED TO THE POLE ABOVE THE HANDHOLE, 6 INCHES MAXIMUM, OR AS APPROVED BY THE ENGINEER.



STREET LIGHTING TAGS
NOT TO SCALE



* CUSTOMER EQUIPMENT AREA 20.00 X 20.00 X 8.25

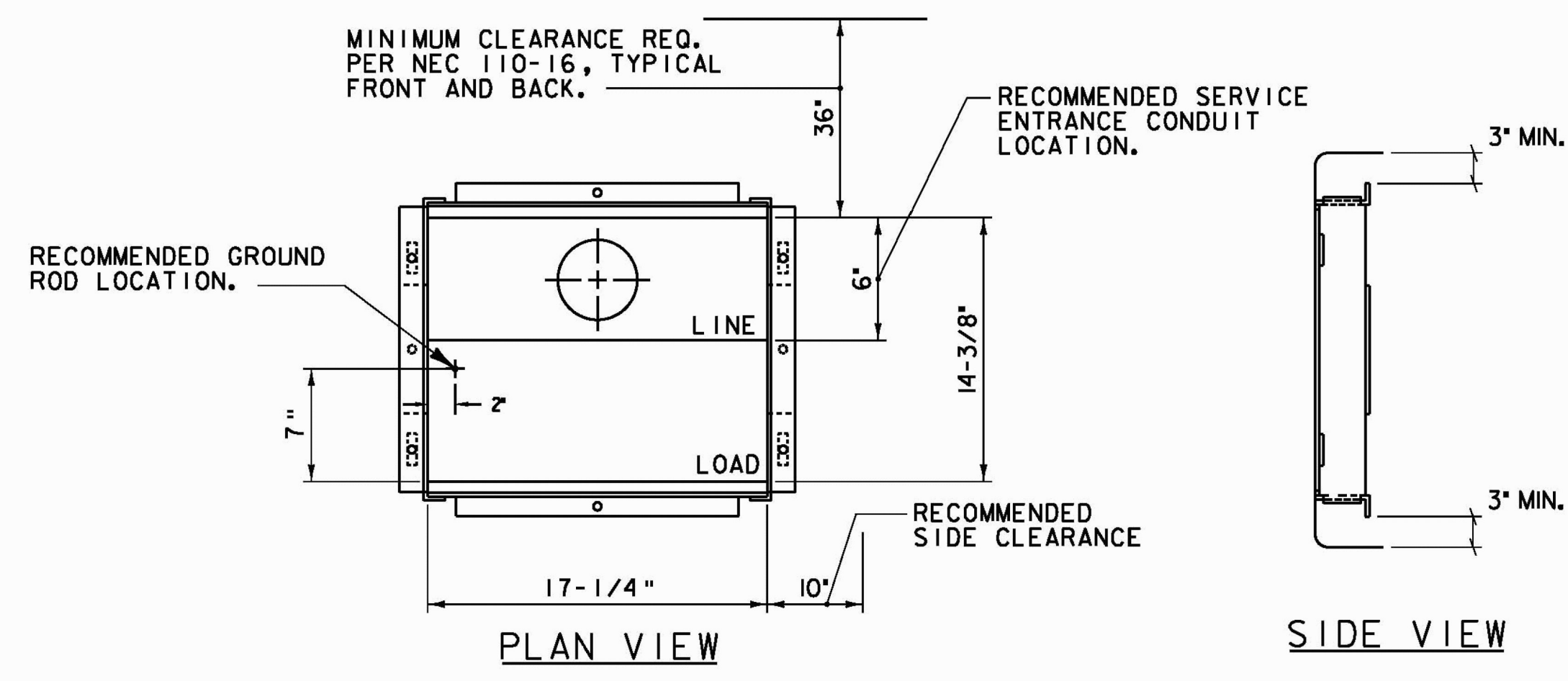
FRONT VIEW
LESS DOOR, DEADFRONT, AND COVER

METER PEDESTALS

PANEL LP: PROVIDE PEDESTAL EQUAL TO MEUC20A - 100A PANEL WITH 100A MAIN BREAKER, 22 KAIC, AND (22) CIRCUIT BREAKERS (SEE PANEL SCHEDULE FOR SIZES).

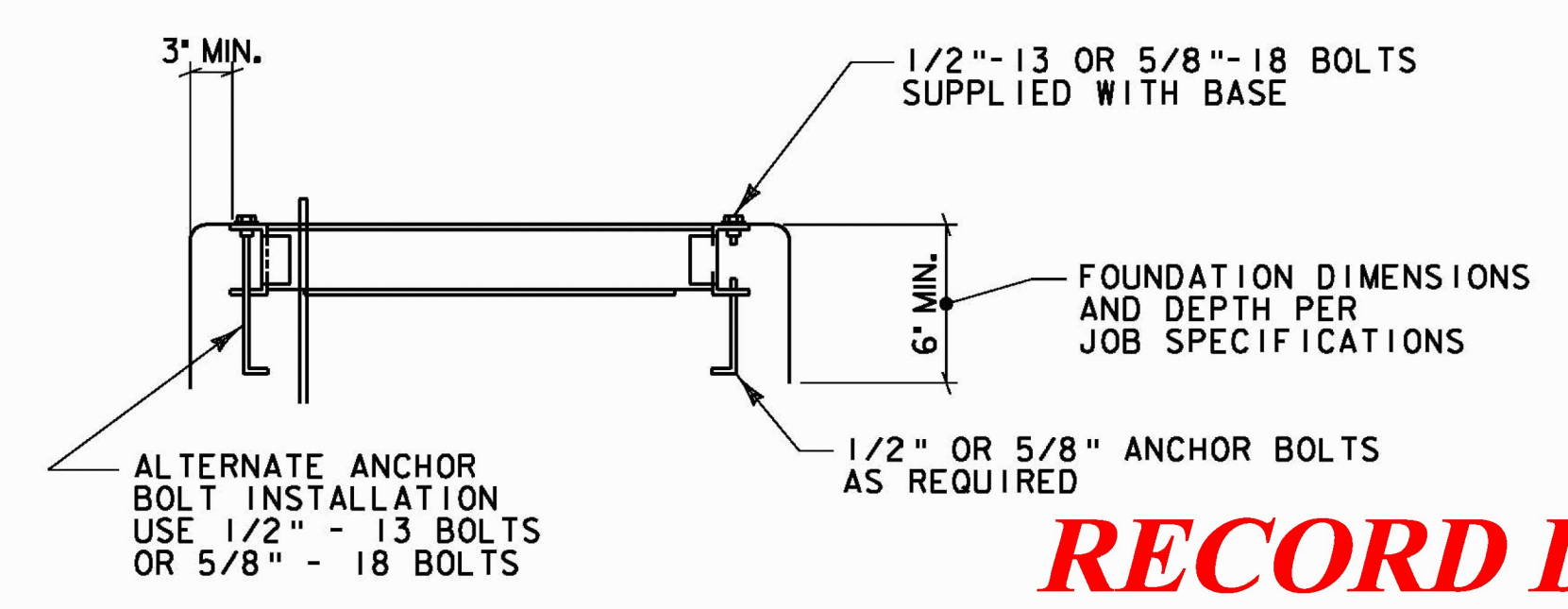
GENERAL NOTES:

1. METER SOCKET AND UTILITY SERVICE ENTRANCE SECTION SHALL BE PER UTILITY REQUIREMENTS.
2. PROVIDE PAD MOUNTING BASE FOR CONCRETE FOUNDATION - MEUC20-BASE AND ANCHOR BOLTS - 714548 (QUANTITY 4 EACH)
3. PROVIDE 20A DUPLEX GFCI RECEPTACLE IN CABINET FOR MAINTENANCE.
4. SEE ITEM 900.6452 - SPECIAL PROVISION (ELECTRICAL POWER BOARD AND CABINET), FOR MORE DETAIL.



PLAN VIEW

SIDE VIEW



FRONT VIEW

SPECIAL PROVISION (ELECTRIC POWER BOARD AND CABINET)
NOT TO SCALE

RECORD DRAWING
DATE: DECEMBER 21, 2012



PROJECT NAME:	COLCHESTER CAMPUS CONNECTOR
PROJECT NUMBER:	TCSP TCSE (007)
FILE NAME: ... \123-125-Lightdet.p1f	PLOT DATE: 12/2/2010
PROJECT LEADER: JBL	DRAWN BY: PZA
DESIGNED BY: MLC	CHECKED BY: GGG
LIGHTING DETAIL LID-3	SHEET 121 OF 153