

WIRED CONDUIT (2") (PVC)

STA. 33+00, 25' RT - STA. 33+29, 23' RT: 35'
STA. 33+00, 26' RT - STA. 34+36, 40' RT: 147'
STA. 33+29, 23' RT - STA. 33+88, 23' RT: 65'
STA. 33+88, 23' RT - STA. 34+36, 40' RT: 57'
STA. 34+36, 40' RT - STA. 34+44, 29' LT: 71'
STA. 34+36, 40' RT - STA. 34+40, 30' RT: 13'
STA. 34+36, 40' RT - STA. 110+28, 22' LT: 86'
STA. 34+44, 29' LT - STA. 34+67, 34' LT: 43'
STA. 106+75, 22' LT - STA. 107+22, 22' LT: 57'
STA. 106+75, 22' LT - STA. 110+28, 22' LT: 353'
STA. 107+22, 22' LT - STA. 108+12, 21' LT: 101'
STA. 108+12, 21' LT - STA. 109+03, 19' LT: 96'
STA. 109+03, 19' LT - STA. 110+28, 22' LT: 130'
STA. 110+17, 20' LT - STA. 110+28, 22' LT: 14'
STA. 110+28, 22' LT - STA. 110+61, 16.3' LT: 39'
STA. 110+28, 22' LT - STA. 112+75, 23' LT: 247'
STA. 110+61, 16.3' LT - STA. 111+22, 16.3' LT: 70'
STA. 111+22, 16.3' LT - STA. 111+86, 16.3' LT: 73'
STA. 111+86, 16.3' LT - STA. 112+42, 16.3' LT: 63'
STA. 112+42, 16.3' LT - STA. 112+75, 23' LT: 36'

ELECTRICAL CONDUIT SLEEVE (4") (PVC) (SCH. 80)

STA. 34+38, 24' RT - STA. 34+44, 28' LT: 53'
STA. 107+68, 22' LT - STA. 108+03, 22' LT: 35'
STA. 109+14, 22' LT - STA. 110+17, 23' LT: 106'
STA. 110+22, 51' RT - STA. 110+28, 18' LT: 70'

ELECTRICAL CONDUIT SLEEVE (6") (PVC) (SCH. 80)

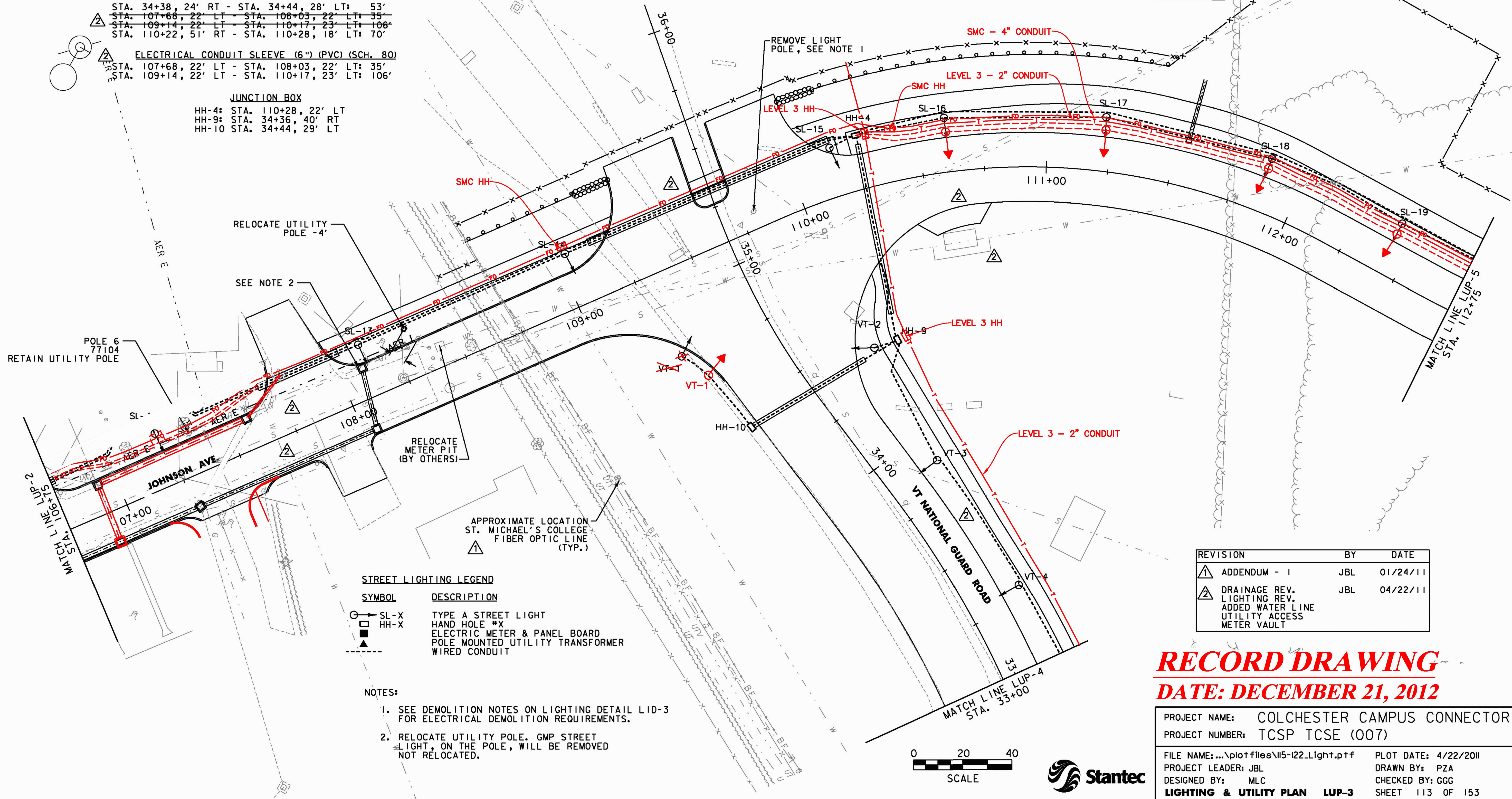
STA. 107+68, 22' LT - STA. 108+03, 22' LT: 35'
STA. 109+14, 22' LT - STA. 110+17, 23' LT: 106'

JUNCTION BOX

HH-4: STA. 110+28, 22' LT
HH-9: STA. 34+36, 40' RT
HH-10: STA. 34+44, 29' LT

SITE LIGHTING SCHEDULE - SHEET 3

SITE LIGHT NO.	LOCATION	OFFSET	TYPE	FEED OVERHEAD-OH UNDERGROUND-UG	LUMINAIRE		MOUNTING TYPE & HEIGHT	LUMINAIRE & ARM QUANTITY	ARM STYLE LENGTH OF ARM
					WATTS	TYPE			
SL-12	107+22	LT22'	A	UG	85	QL	POLE - 14'	I	NONE - POST TOP
SL-13	108+12	LT21'	A	UG	85	QL	POLE - 14'	I	NONE - POST TOP
SL-14	109+03	LT19'	A	UG	85	QL	POLE - 14'	I	NONE - POST TOP
SL-15	110+17	LT20'	A	UG	85	QL	POLE - 14'	I	NONE - POST TOP
SL-16	110+61	LT16.3'	A	UG	85	QL	POLE - 14'	I	NONE - POST TOP
SL-17	111+22	LT16.3'	A	UG	85	QL	POLE - 14'	I	NONE - POST TOP
SL-18	111+86	LT16.3'	A	UG	85	QL	POLE - 14'	I	NONE - POST TOP
SL-19	112+42	LT16.3'	A	UG	85	QL	POLE - 14'	I	NONE - POST TOP
VT-1	34+67	LT31'	A	UG	85	QL	POLE - 14'	I	NONE - POST TOP
VT-2	34+40	RT30'	A	UG	85	QL	POLE - 14'	I	NONE - POST TOP
VT-3	33+88	RT23'	A	UG	85	QL	POLE - 14'	I	NONE - POST TOP
VT-4	33+29	RT23'	A	UG	85	QL	POLE - 14'	I	NONE - POST TOP



STREET LIGHTING LEGEND

SYMBOL	DESCRIPTION
○	SL-X TYPE A STREET LIGHT
□	HH-X HAND HOLE *X
■	ELECTRIC METER & PANEL BOARD
▲	POLE MOUNTED UTILITY TRANSFORMER
---	WIRED CONDUIT

- NOTES:**
- SEE DEMOLITION NOTES ON LIGHTING DETAIL LID-3 FOR ELECTRICAL DEMOLITION REQUIREMENTS.
 - RELOCATE UTILITY POLE. GMP STREET LIGHT, ON THE POLE, WILL BE REMOVED NOT RELOCATED.

REVISION	BY	DATE
①	JBL	01/24/11
②	JBL	04/22/11

RECORD DRAWING
DATE: DECEMBER 21, 2012

PROJECT NAME: COLCHESTER CAMPUS CONNECTOR	PLOT DATE: 4/22/2011
PROJECT NUMBER: TCSP TCSE (007)	DRAWN BY: PZA
FILE NAME: ...plotfiles\115-122.Light.plt	CHECKED BY: GGG
DESIGNED BY: MLC	SHEET 113 OF 153
LIGHTING & UTILITY PLAN LUP-3	

