

**NEW SANITARY SEWER LATERAL PIPE (6")**

ITEM 900.6402 SPECIAL PROVISION  
(PVC SEWER PIPE) (6")

- LP16 STA. 17+12, LT.  
NEW 6"X 52' SDR35 PVC SEWER  
CONNECT NEW LATERAL SEWER  
PIPE TO EXISTING AT R.O.W.
- LP18 STA. 17+92, LT.  
NEW 6"X 37' SDR35 PVC SEWER  
CONNECT NEW LATERAL SEWER  
PIPE TO EXISTING AT R.O.W.
- LP20 STA. 18+27 - 18+22, LT.  
NEW 6"X 40' SDR35 PVC SEWER  
CONNECT NEW LATERAL SEWER  
PIPE TO EXISTING AT R.O.W.
- LP22 STA. 19+25-19+35, LT  
NEW 6"X 38' SDR35 PVC SEWER  
CONNECT NEW LATERAL SEWER  
PIPE TO EXISTING AT R.O.W.

**NEW SANITARY SEWER LATERAL PIPE (4")**

ITEM 900.6401 SPECIAL PROVISION  
(PVC SEWER PIPE) (4")

- LP15 STA. 16+92, RT  
NEW 4"X 13' SDR35 PVC SEWER  
CONNECT NEW LATERAL SEWER  
PIPE TO EXISTING AT R.O.W.
- LP17 STA. 17+63, RT  
NEW 4"X 17' SDR35 PVC SEWER  
CONNECT NEW LATERAL SEWER  
PIPE TO EXISTING AT R.O.W.
- LP21 STA. 17+80, RT  
INSTALLED 2' OF 4" SDR 35,  
4" X 6" REDUCER, 6" 45° BEND,  
9' OF 6" SDR 35

**NEW SANITARY SEWER STRUCTURES**

ITEM 900.6201 SPECIAL PROVISION  
(SANITARY SEWER MANHOLE) (4' I.D.)

- MH6 STA. 18+27=CONST. @ STA. 107+25  
NEW 4' ID PRECAST MANHOLE
- MH7 STA. 19+25=CONST. @ STA. 108+23  
NEW 4' ID PRECAST MANHOLE

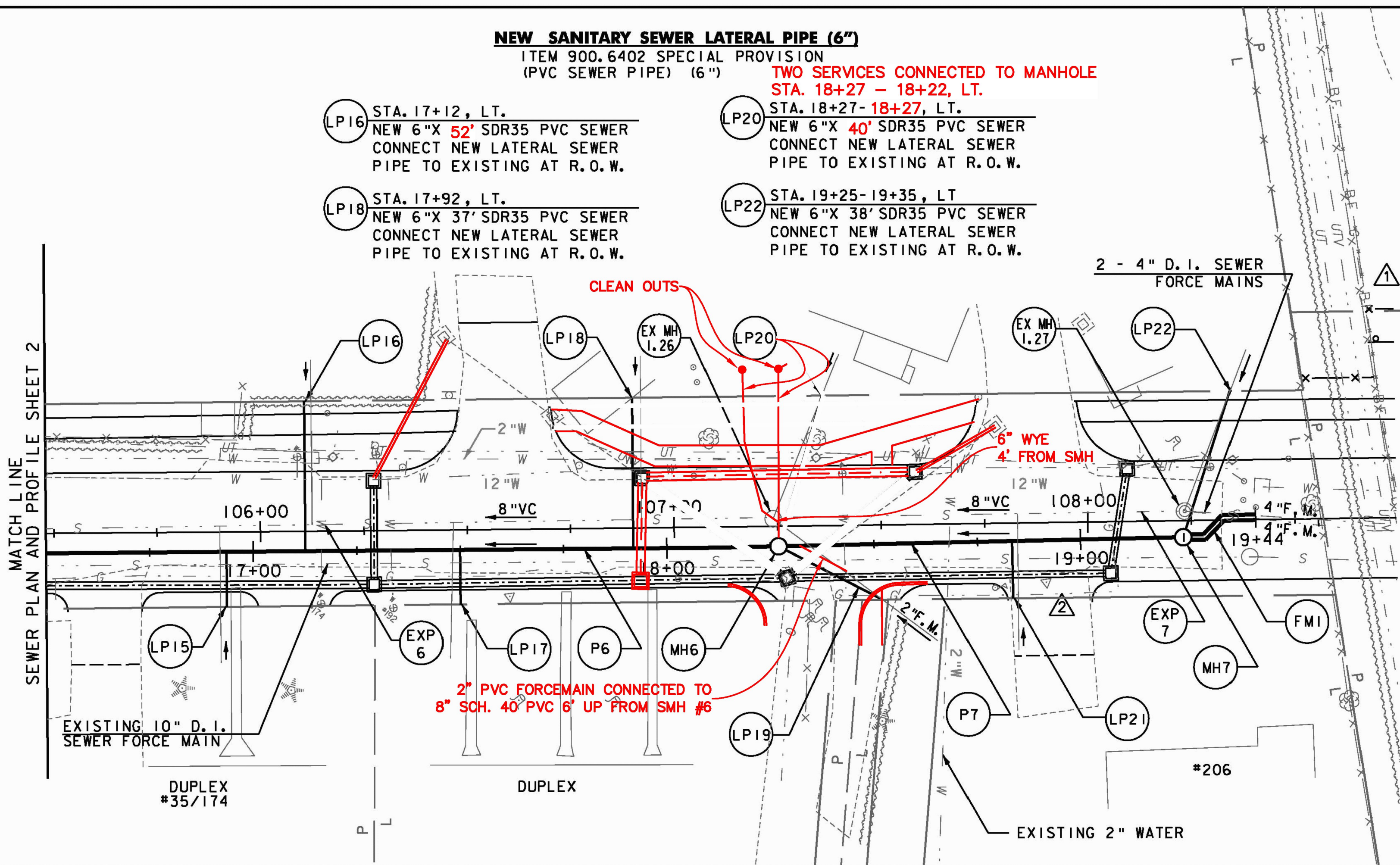
**NEW SANITARY SEWER PIPE (8")**

ITEM 900.6403 SPECIAL PROVISION  
(PVC SEWER PIPE) (8")

- P6 STA. 15+74 - STA. 18+27  
NEW 8"X 253' SDR35 PVC SEWER
- P7 STA. 18+27 - STA. 19+25  
NEW 8"X 98' SDR35 PVC SEWER

REVISION	BY	DATE
ADDENDUM - 1	JBL	01/24/11
DRAINAGE REV. ADDED WATER LINE	JBL	04/22/11

SEWER PLAN AND PROFILE SHEET 2



**NEW SANITARY SEWER FORCE MAIN (4")**

ITEM 900.6405 SPECIAL PROVISION  
(SANITARY SEWER FORCE MAIN)  
(4" CLASS 52 D.I.)

- FMI STA. 19+25-19+44  
TWO (2) NEW 4"X19' CLASS 52 D.I. SEWER  
FORCE MAINS. CONNECT NEW FORCE MAINS  
INTO EXISTING 4" D.I. SEWER FORCE MAINS  
WITH 4" D.I. LONG SLEEVE COUPLINGS.

**NEW SANITARY SEWER FORCE MAIN (2")**

ITEM 900.6404 SPECIAL PROVISION  
(SANITARY SEWER FORCE MAIN)  
(2" SDR 26 PVC)

- LP19 STA. 18+10-18+50, RT  
NEW 2"X 28' SDR26 PVC SEWER FORCE  
MAIN. CONNECT NEW SEWER FORCE  
MAIN TO EXISTING FORCE MAIN AT R.O.W.

**EXISTING SEWER MANHOLES**

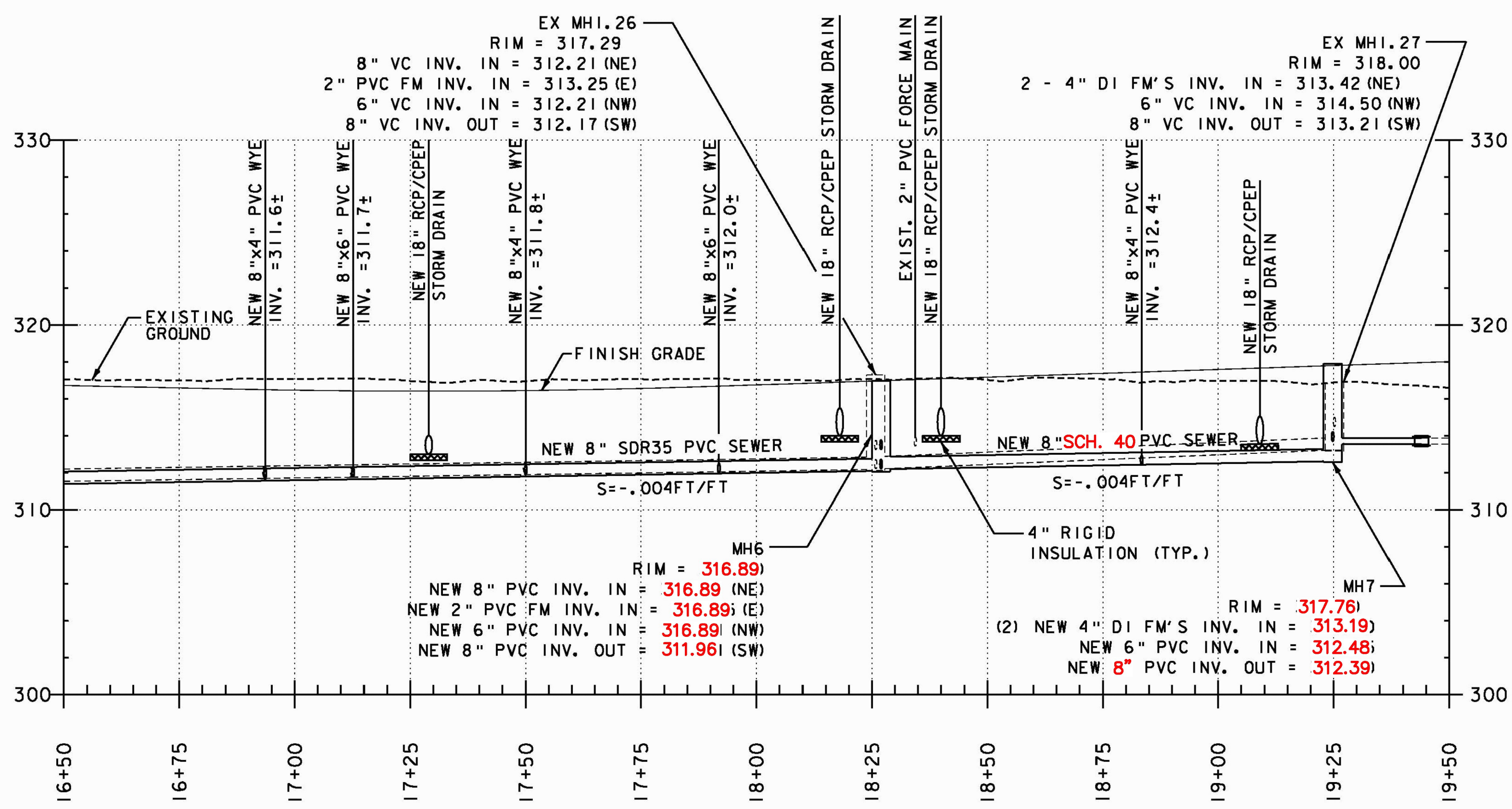
PAYMENT VARIES

- EX MH 1.26 CONST. @ STA. 107+24, LT.  
REMOVE EXISTING 4' I.D. MANHOLE UPON  
TRANSFER TO NEW SYSTEM. PAYMENT IS TO  
BE INCIDENTAL TO ITEM 900.6454 SPECIAL  
PROVISION (TRANSFER TO NEW SYSTEM,  
SANITARY SEWER).
- EX MH 1.27 CONST. @ STA. 108+23, LT.  
REMOVE EXISTING 4' I.D. MANHOLE UPON  
TRANSFER TO NEW SYSTEM. PAYMENT IS TO  
BE INCIDENTAL TO ITEM 900.6454 SPECIAL  
PROVISION (TRANSFER TO NEW SYSTEM,  
SANITARY SEWER).

**EXISTING SEWER PIPES**

PAYMENT FOR FILLING EXISTING SEWER PIPES TO  
BE ABANDONED WITH FLOWABLE FILL IS TO BE  
INCIDENTAL TO ITEM 900.6454 SPECIAL PROVISION  
(TRANSFER TO NEW SYSTEM, SANITARY SEWER).

- EXP 6 CONST. @ STA. 104+77-107+24, LT.  
EXISTING 8" V.C. SEWER PIPE TO BE  
FILLED WITH FLOWABLE FILL AND  
ABANDONED IN PLACE.
- EXP 7 CONST. @ STA. 107+24-108+23, LT.  
EXISTING 8" V.C. SEWER PIPE TO BE  
FILLED WITH FLOWABLE FILL AND  
ABANDONED IN PLACE.



**RECORD DRAWING**  
**DATE: DECEMBER 21, 2012**

PROJECT NAME: COLCHESTER CAMPUS CONNECTOR	PLOT DATE: 4/22/2011
PROJECT NUMBER: TCSP TCSE (007)	DRAWN BY: RAW
FILE NAME: ...plotfiles\12_Sewer03.prf	CHECKED BY: DMC
PROJECT LEADER: JBL	DESIGNED BY: TDM
<b>SEWER PLAN AND PROFILE SHEET 3</b>	
SHEET 108 OF 153	

