

NEW SANITARY SEWER LATERAL PIPE (6")
 ITEM 900.6402 SPECIAL PROVISION
 (PVC SEWER PIPE) (6")

LP10A STA. 15+08, RT
 NEW 4" X 12.5' SDR 35 PVC SEWER
 CONNECT TO NEW LATERAL SEWER
 PIPE TO DUNKIN DONUTS

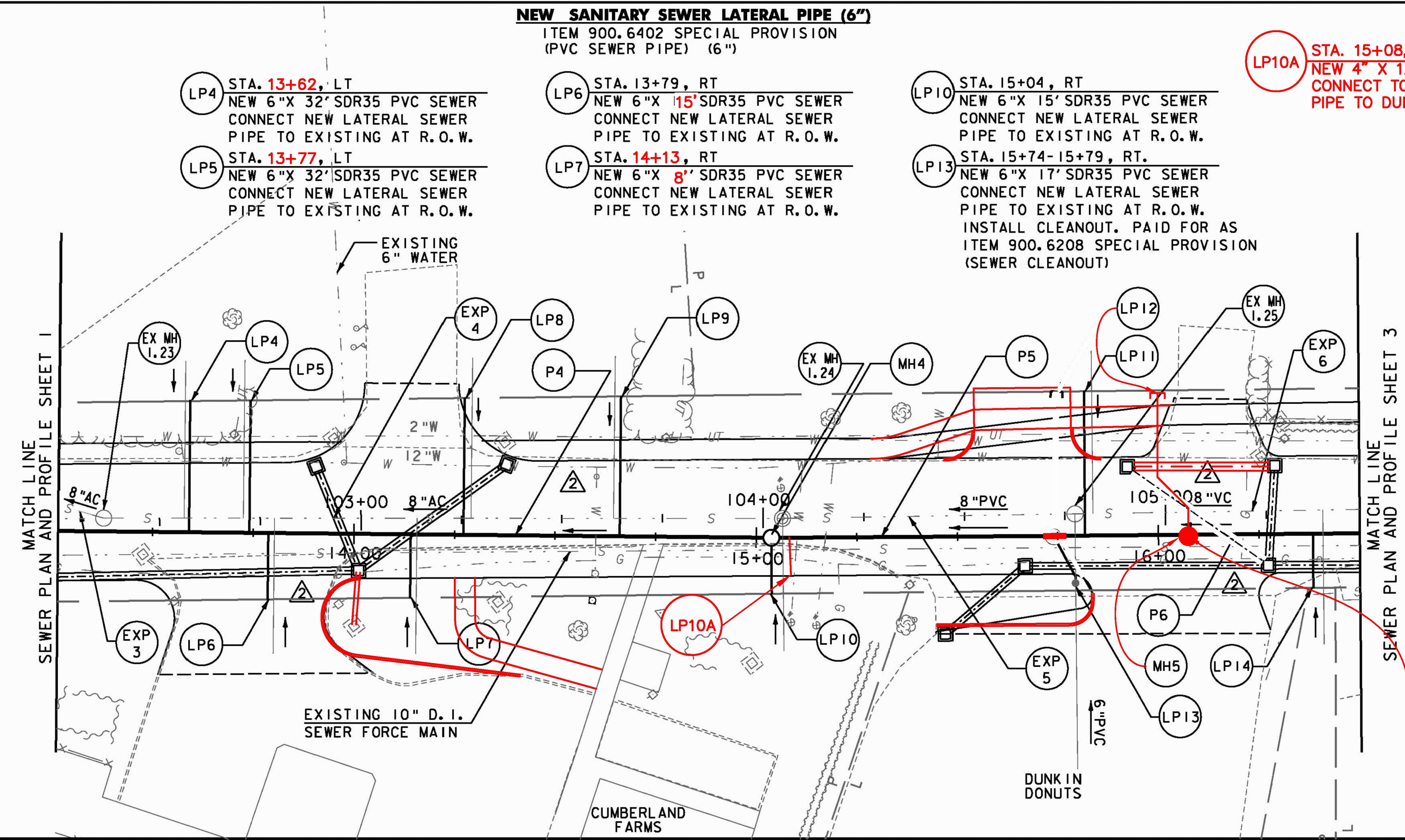
NEW SANITARY SEWER STRUCTURES
 ITEM 900.6201 SPECIAL PROVISION
 (SANITARY SEWER MANHOLE) (4' I.D.)

- MH4 STA. 15+00=CONST. & STA. 103+98, RT.
NEW 4' ID PRECAST MANHOLE
- MH5 STA. 16+07.5=CONST. & STA. 105+05.5 RT.
NEW 4' ID PRECAST MANHOLE

NEW SANITARY SEWER PIPE (8")
 ITEM 900.6403 SPECIAL PROVISION
 (PVC SEWER PIPE) (8")

- P4 STA. 13+18 - STA. 15+00
NEW 8" X 178' SDR35 PVC SEWER
- P5 STA. 15+00 - STA. 16+07.5
NEW 8" X 103.5' SDR35 PVC SEWER

REVISION	BY	DATE
	JBL	04/22/11
DRAINAGE REV. ADDED WATER LINE		



NEW SANITARY SEWER LATERAL PIPE (4")
 ITEM 900.6401 SPECIAL PROVISION
 (PVC SEWER PIPE) (4")

- LP8 STA. 14+27, LT
NEW 4" X 34' SDR35 PVC SEWER
CONNECT NEW LATERAL SEWER
PIPE TO EXISTING AT R.O.W.
- LP9 STA. 14+62 LT
NEW 4" X 33.5' SDR35 PVC SEWER
CONNECT NEW LATERAL SEWER
PIPE TO EXISTING AT R.O.W.
- LP11 STA. 15+84, LT
NEW 4" X 34' SDR35 PVC SEWER
CONNECT NEW LATERAL SEWER
PIPE TO EXISTING AT R.O.W.
- LP14 STA. 16+39, RT
NEW 4" X 2.5' SDR35 PVC SEWER
CONNECT NEW LATERAL SEWER
PIPE TO EXISTING AT R.O.W.

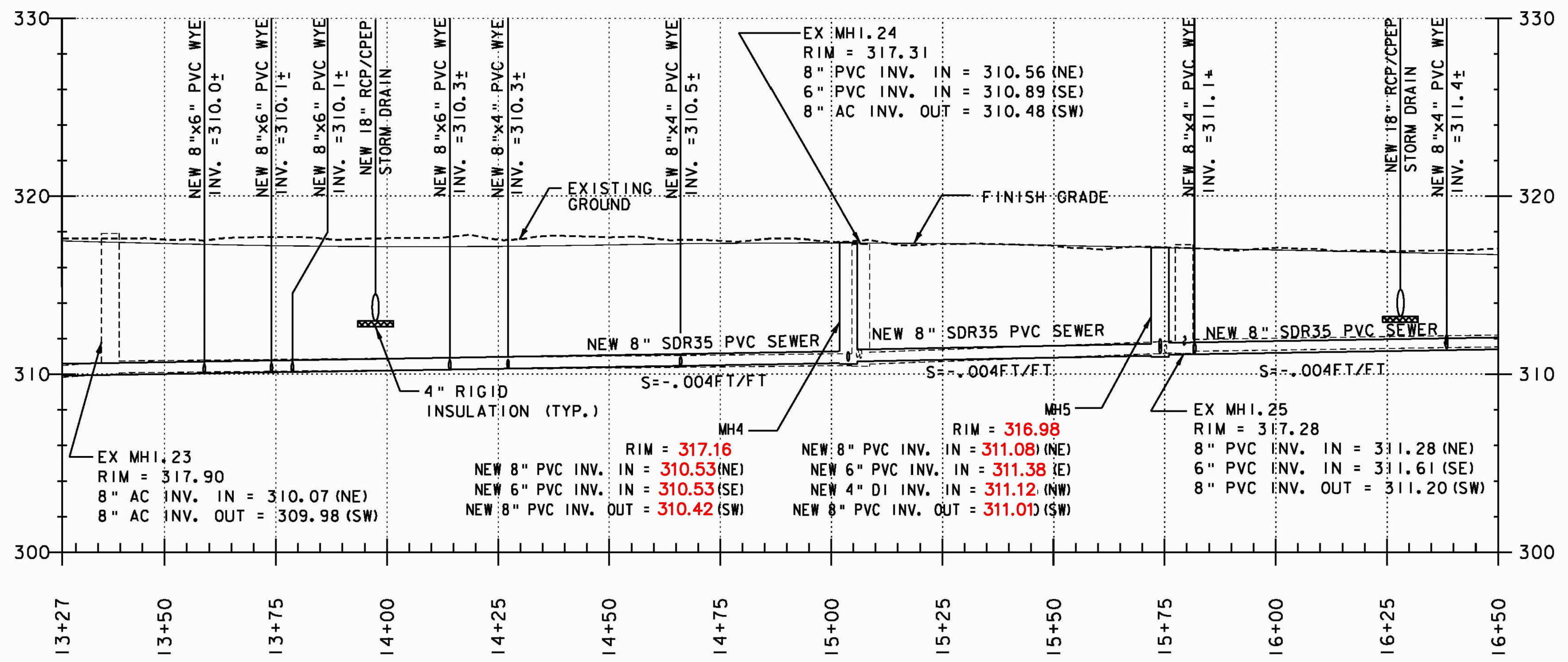
NEW SANITARY SEWER FORCE MAIN (4")
 ITEM 900.6405 SPECIAL PROVISION
 (SANITARY SEWER FORCE MAIN)
 (4" CLASS 52 D. I.)

- LP12 STA. 15+74, LT
NEW 4" X 36' CLASS 52 D. I. SEWER
FORCE MAIN FOR FUTURE CONNECTION
INSTALL WITH CAP AT R.O.W.

SMH 5 WAS MOVED DUE TO A CONFLICT WITH THE EXISTING 10" DI FORCEMAIN. THE EXISTING FORCEMAIN IS APPROXIMATELY 3" BELOW THE BOTTOM OF THE STRUCTURE AS THE PIPE PASSES UNDER THE SMH. THE PIPE CENTERLINE IS APPROXIMATELY 18" IN FROM THE EAST SIDE OF THE STRUCTURE.

EXISTING SEWER MANHOLES
 PAYMENT VARIES

- EX MH 1.23 CONST @ STA. 102+36, LT.
REMOVE EXISTING 4' I.D. MANHOLE UPON
TRANSFER TO NEW SYSTEM. PAYMENT IS TO
BE INCIDENTAL TO ITEM 900.6454 SPECIAL
PROVISION (TRANSFER TO NEW SYSTEM,
SANITARY SEWER).
- EX MH 1.24 CONST @ STA. 104+05
REMOVE EXISTING 4' I.D. MANHOLE UPON
TRANSFER TO NEW SYSTEM. PAYMENT IS TO
BE INCIDENTAL TO ITEM 900.6454 SPECIAL
PROVISION (TRANSFER TO NEW SYSTEM,
SANITARY SEWER).
- EX MH 1.25 CONST @ STA. 104+77, LT.
REMOVE EXISTING 4' I.D. MANHOLE UPON
TRANSFER TO NEW SYSTEM. PAYMENT IS TO
BE INCIDENTAL TO ITEM 900.6454 SPECIAL
PROVISION (TRANSFER TO NEW SYSTEM,
SANITARY SEWER).



EXISTING SEWER PIPES
 PAYMENT FOR FILLING EXISTING SEWER PIPES TO
 BE ABANDONED WITH FLOWABLE FILL IS TO BE
 INCIDENTAL TO ITEM 900.6454 SPECIAL PROVISION
 (TRANSFER TO NEW SYSTEM, SANITARY SEWER).

- EXP 3 CONST. @ STA. 102+17-102+36, LT.
EXISTING 8" A.C. SEWER PIPE TO BE
FILLED WITH FLOWABLE FILL AND
ABANDONED IN PLACE.
- EXP 4 CONST. @ STA. 102+36-104+05, LT.
EXISTING 8" A.C. SEWER PIPE TO BE
FILLED WITH FLOWABLE FILL AND
ABANDONED IN PLACE.
- EXP 5 CONST. @ STA. 104+05 -104+77, LT.
EXISTING 8" PVC SEWER PIPE TO BE
FILLED WITH FLOWABLE FILL AND
ABANDONED IN PLACE.

RECORD DRAWING
DATE: DECEMBER 21, 2012

PROJECT NAME: COLCHESTER CAMPUS CONNECTOR	PLOT DATE: 4/22/2011
PROJECT NUMBER: TCSP TCSE (007)	DRAWN BY: RAW
FILE NAME: ...\\plotfiles\\111_Sewer02.pxf	DESIGNED BY: TDM
PROJECT LEADER: JBL	CHECKED BY: DMC
SEWER PLAN AND PROFILE SHEET 2	SHEET 107 OF 153

PROFILE SCALE:
 1" = 20' HORIZONTAL
 1" = 5' VERTICAL

