

DURABLE 6" WHITE LINE
 STA. 112+75, RT. - STA. 113+80, RT. (BIKE LANE)
 STA. 112+75, LT. - STA. 113+80, LT. (BIKE LANE)
 STA. 113+85, RT. - STA. 118+75, RT. (BIKE LANE)
 STA. 113+85, LT. - STA. 118+75, LT. (BIKE LANE)

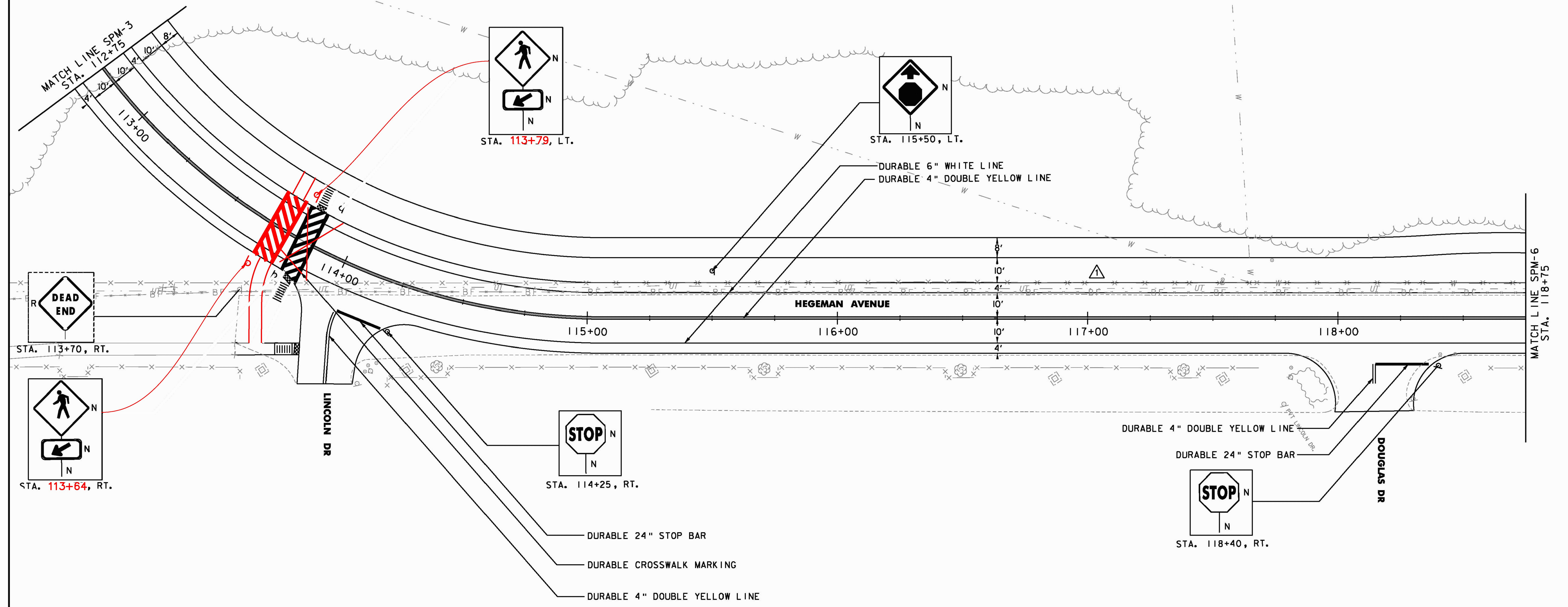
DURABLE 4" YELLOW LINE
 STA. 112+75, CL. - STA. 118+75, CL. (DOUBLE SOLID)
 STA. 114+04, RT. - STA. 114+11, RT. (DOUBLE SOLID)
 STA. 118+14, RT. (DOUBLE SOLID)

DURABLE CROSSWALK MARKING
 STA. 113+72, LT. - STA. 113+72, RT.

DURABLE 24" STOP BAR
 STA. 114+05, RT. - STA. 114+22, RT.
 STA. 118+15, RT. - STA. 118+36, RT.

DETECTABLE WARNING SURFACES
 STA. 113+72, 15.0' LT
 STA. 113+72, 15.0' RT
 STA. 113+99, 39.0' RT

REMOVING SIGNS
 AS SHOWN - 1



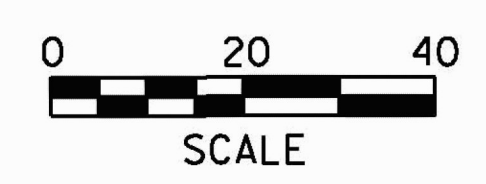
- SIGNAGE PLAN NOTES:**
1. ALL EXISTING SIGNS NOT SHOWN SHALL BE RETAINED UNLESS DIRECTED OTHERWISE BY THE RESIDENT ENGINEER.
 2. SEE VTTRANS STANDARD E-121 FOR STANDARD SIGN PLACEMENT.
 3. ALL TEMPORARY PAVEMENT MARKINGS SHALL BE TEMPORARY 4" LINE. TEMPORARY LETTER OR SYMBOL REQUIRED FOR TURN ARROWS ONLY.

SIGN & DELINEATOR LEGEND

N	= NEW
R	= REMOVE
R&S	= REMOVE & SALVAGE
S	= SALVAGE SIGN
RET	= RETAIN
B-B	= BACK TO BACK
*	= MATCH EXISTING CONDITIONS
----	= EXISTING
----	= PROPOSED

RECORD DRAWING
DATE: DECEMBER 21, 2012

REVISION	BY	DATE
ADDENDUM - 1	JBL	01/24/11



PROJECT NAME:	COLCHESTER CAMPUS CONNECTOR
PROJECT NUMBER:	TCSP TCSE (007)
FILE NAME: ...\plotfiles\087-094_sign.pxf	PLOT DATE: 4/22/2011
PROJECT LEADER: JBL	DRAWN BY: PZA
DESIGNED BY: TFD	CHECKED BY: GGG
SIGNING/PVT MARKING PLAN SPM-5 SHEET 87 OF 153	