

DURABLE LETTER OR SYMBOL

- STA. 33+18, LT. - AND
- STA. 34+41, LT. -
- STA. 34+42, RT. -
- STA. 34+52, LT. -
- STA. 34+53, RT. -
- STA. 34+73, RT. -
- STA. 35+87, LT. -
- STA. 108+83, LT. -
- STA. 108+85, RT. -
- STA. 108+95, LT. -
- STA. 108+97, RT. -
- STA. 108+97, RT. - STOP
- STA. 110+38, LT. -
- STA. 110+39, LT. - STOP
- STA. 110+50, LT. -

DURABLE 6" WHITE LINE
 STA. 33+00, RT. - STA. 34+75, RT. (BIKE LANE)
 STA. 33+00, LT. - STA. 34+66, LT. (BIKE LANE)
 STA. 106+75, RT. - STA. 109+03, RT. (BIKE LANE)
 STA. 106+75, LT. - STA. 108+88, LT. (BIKE LANE)
 STA. 110+25, RT. - STA. 112+75, RT. (BIKE LANE)
 STA. 110+29, LT. - STA. 112+75, LT. (BIKE LANE)
 FOR "DO NOT BLOCK INTERSECTION" AREA SEE SIGNING/PVT MARKING DETAIL SPD-1

DURABLE 24" STOP BAR
 STA. 107+74, LT. - STA. 107+85, LT.
 STA. 109+03, RT.
 STA. 110+29, LT.

DETECTABLE WARNING SURFACE
 STA. 107+72, LT.
 STA. 107+99, LT.
 STA. 109+24, LT.
 STA. 109+61, LT.
 STA. 109+74, LT.
 STA. 110+09, LT.
 STA. 110+21, RT.
 STA. 110+22, LT.
 STA. 107+43, RT.
 STA. 107+50, LT.

DURABLE 4" YELLOW LINE
 STA. 33+00, CL. - STA. 34+64, CL. (DOUBLE SOLID)
 STA. 106+75, CL. - STA. 109+03, CL. (DOUBLE SOLID)
 STA. 110+29, CL. - STA. 112+75, CL. (DOUBLE SOLID)

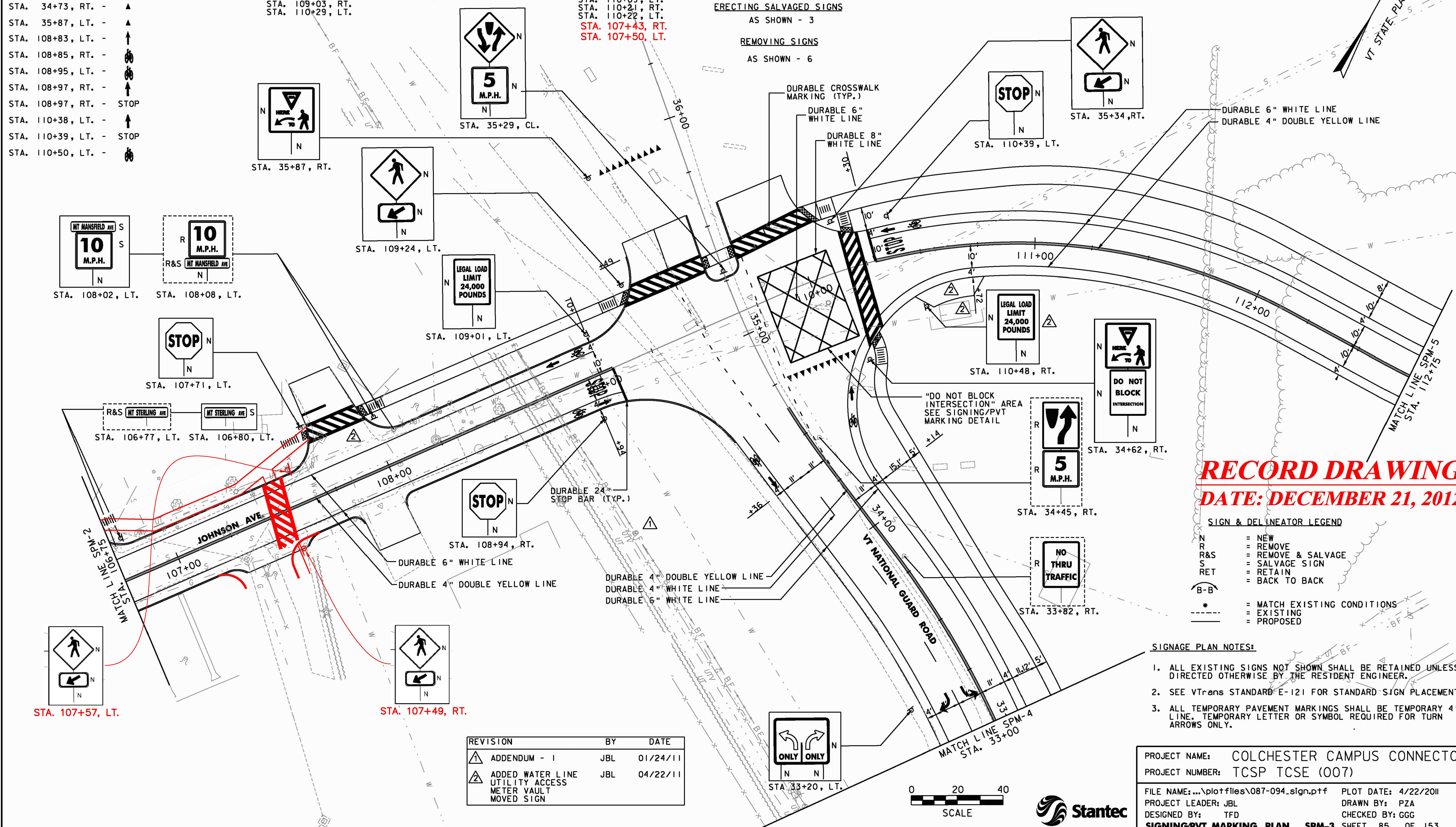
DURABLE CROSSWALK MARKING
 STA. 107+74, LT. - STA. 107+97, LT.
 STA. 109+25, LT. - STA. 109+60, LT.
 STA. 109+75, LT. - STA. 110+08, LT.
 STA. 110+21, RT. - STA. 110+22, LT.
 STA. 107+50, LT. - STA. 107+43, RT.

DURABLE 4" WHITE LINE
 STA. 33+00, LT. - STA. 33+20, LT. (SOLID)
 STA. 33+20, LT. - STA. 34+63, LT. (DOTTED 3' - 9")
 STA. 34+29, RT. - STA. 35+34, RT. (DOTTED 2' - 4")
 STA. 34+63, LT. - STA. 35+31, LT. (DOTTED 2' - 4")
 STA. 35+37, LT. - STA. 35+57, LT. (SOLID)

DURABLE 8" WHITE LINE
 FOR "DO NOT BLOCK INTERSECTION" AREA
 SEE SIGNING/PVT MARKING DETAIL SPD-1

ERECTING SALVAGED SIGNS
 AS SHOWN - 3

REMOVING SIGNS
 AS SHOWN - 6



RECORD DRAWING
DATE: DECEMBER 21, 2012

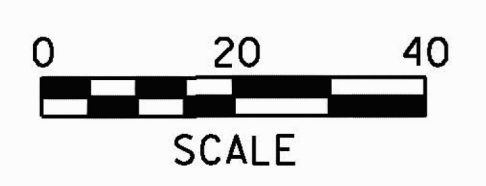
SIGN & DELINEATOR LEGEND

- N = NEW
- R = REMOVE
- R&S = REMOVE & SALVAGE
- S = SALVAGE SIGN
- RET = RETAIN
- = BACK TO BACK
- B-B = MATCH EXISTING CONDITIONS
- * = EXISTING
- - - = PROPOSED

SIGNAGE PLAN NOTES:

1. ALL EXISTING SIGNS NOT SHOWN SHALL BE RETAINED UNLESS DIRECTED OTHERWISE BY THE RESIDENT ENGINEER.
2. SEE VTRANS STANDARD E-121 FOR STANDARD SIGN PLACEMENT.
3. ALL TEMPORARY PAVEMENT MARKINGS SHALL BE TEMPORARY 4" LINE. TEMPORARY LETTER OR SYMBOL REQUIRED FOR TURN ARROWS ONLY.

REVISION	BY	DATE
ADDENDUM - I	JBL	01/24/11
ADDED WATER LINE UTILITY ACCESS METER VAULT MOVED SIGN	JBL	04/22/11



PROJECT NAME: COLCHESTER CAMPUS CONNECTOR
 PROJECT NUMBER: TCSP TCSE (007)

FILE NAME: ...\\plotfiles\087-094.sign.pxf PLOT DATE: 4/22/2011
 PROJECT LEADER: JBL DRAWN BY: PZA
 DESIGNED BY: TFD CHECKED BY: GGG
SIGNING/PVT MARKING PLAN SPM-3 SHEET 85 OF 153