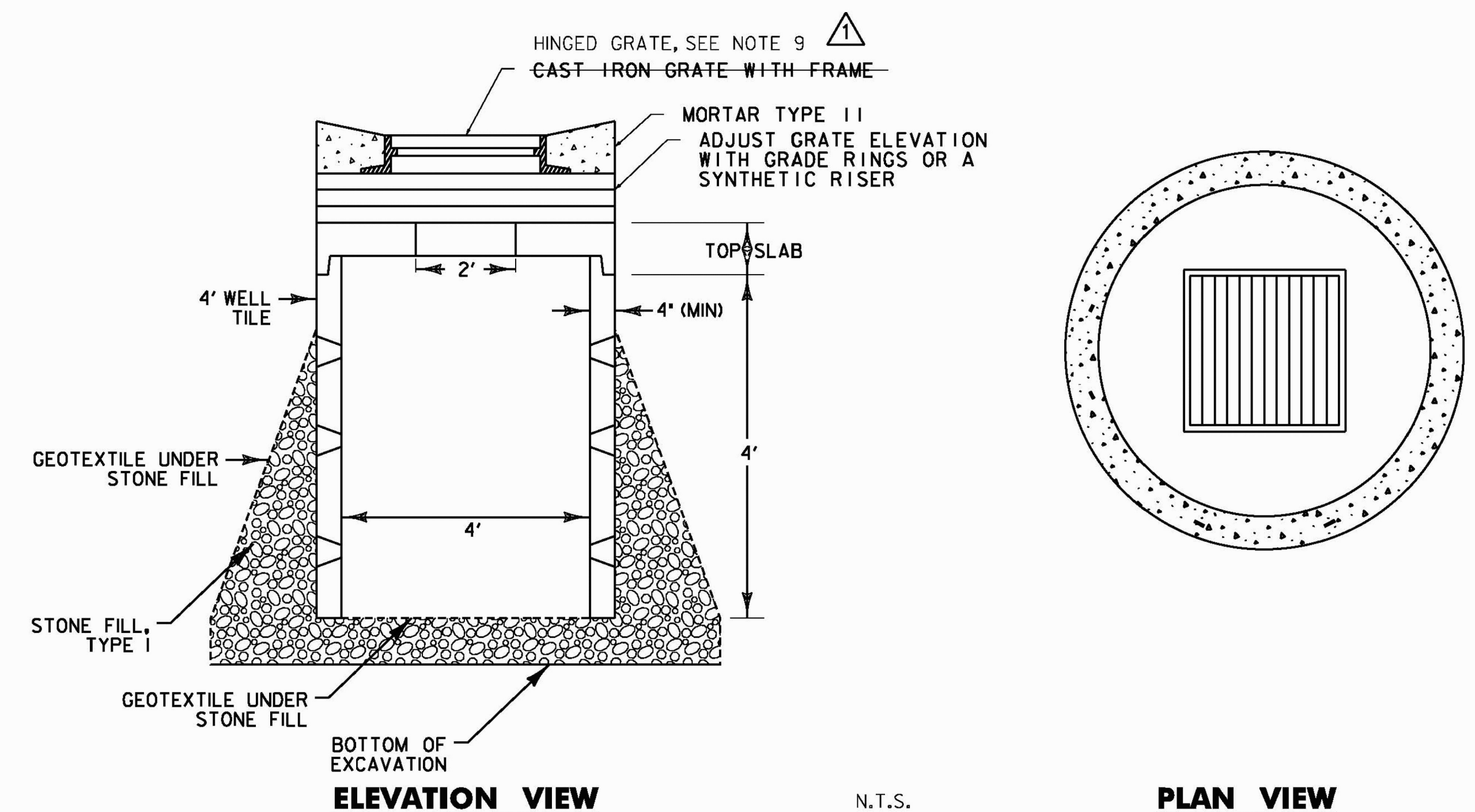


N.T.S.



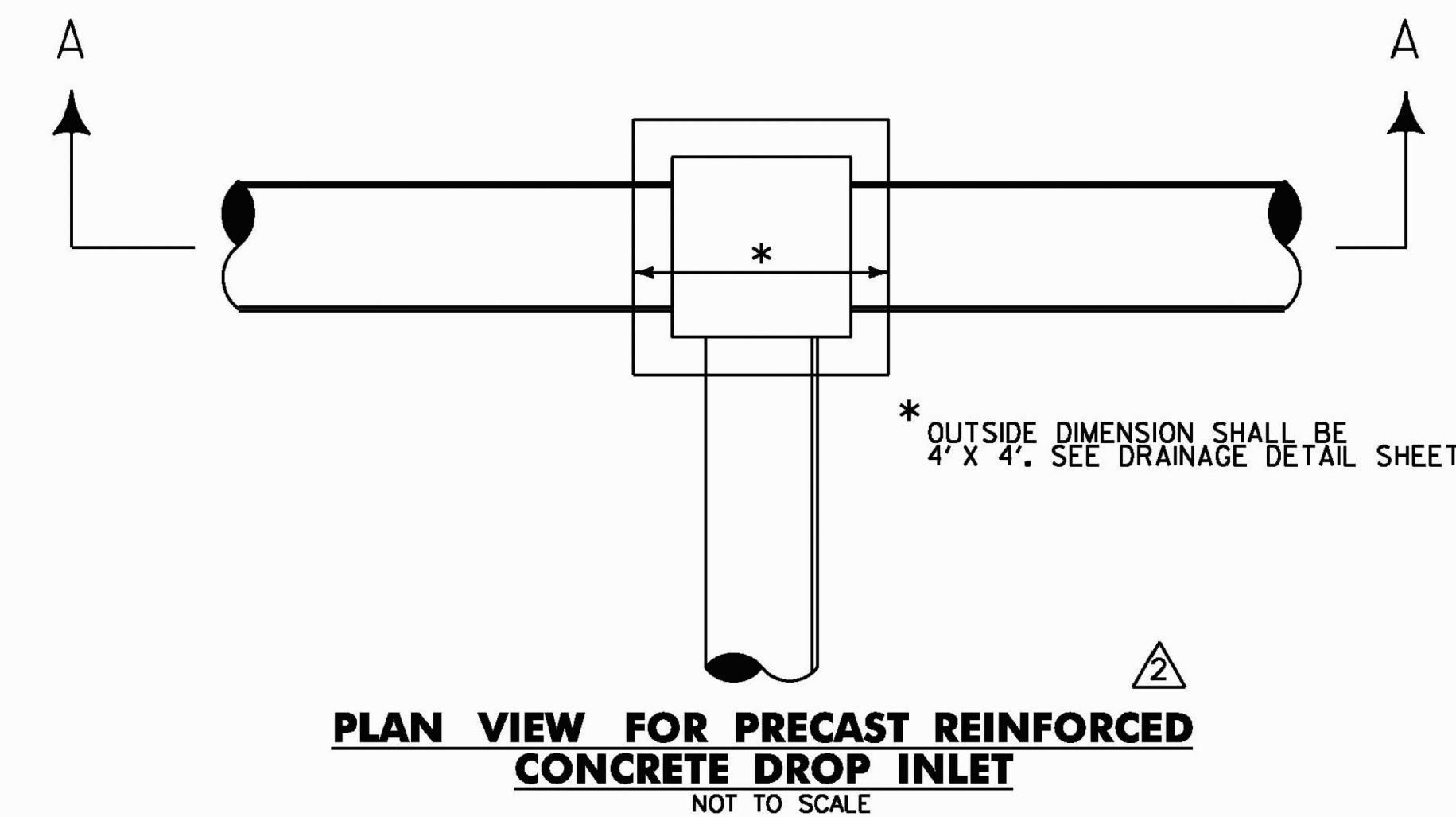
N.T.S.

**PRECAST REINFORCED CATCH BASIN NOTES:**

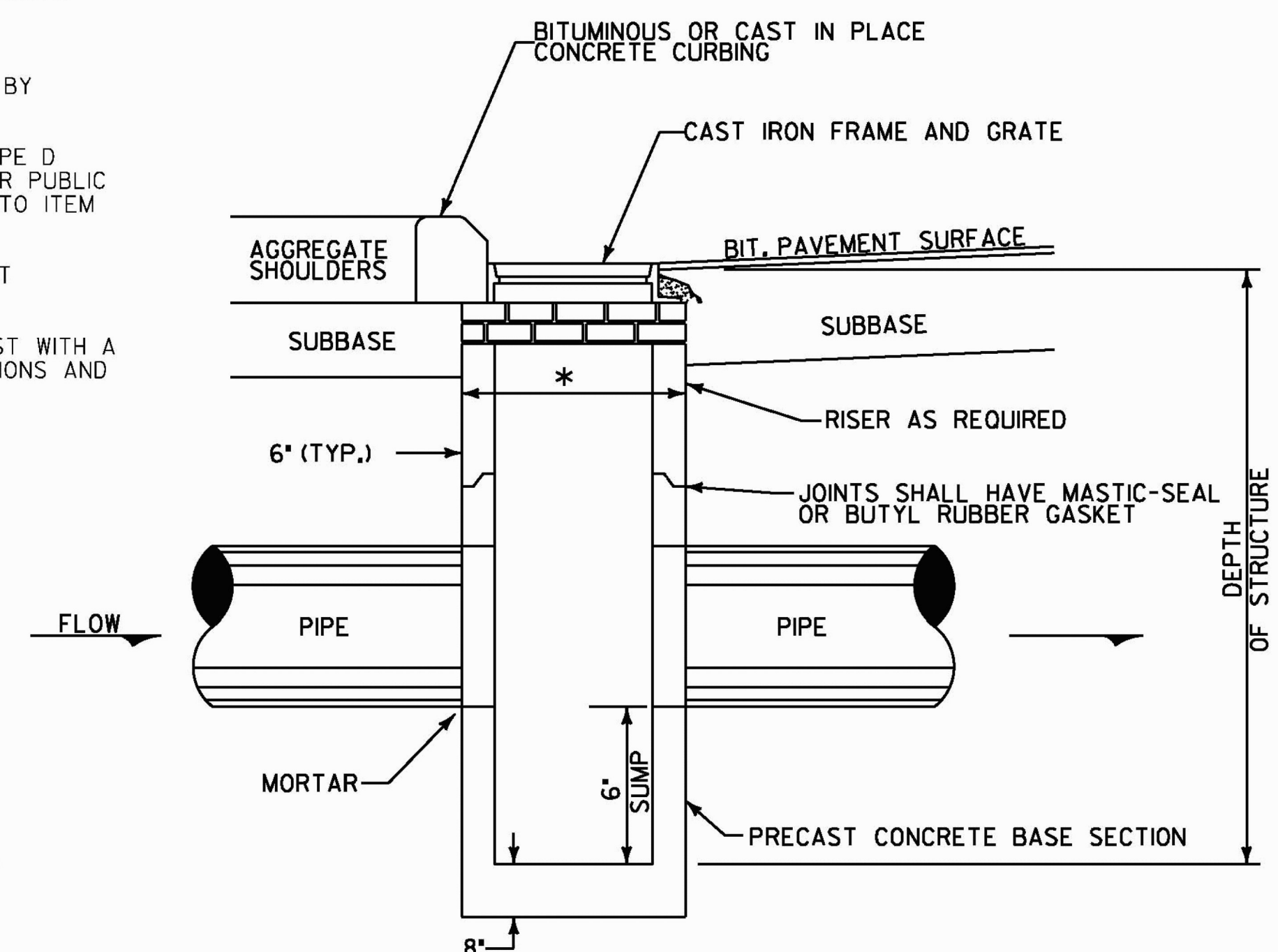
1. PRECAST CONCRETE SECTIONS SHALL CONFORM TO THE STANDARD SPECIFICATIONS AND ASTM C-478.
2. MINIMUM CONCRETE COMPRESSIVE STRENGTH: 4000 PSI AT 28-DAYS.
3. STEEL REINFORCING SHALL CONFORM TO ASTM A185 OR A82 FOR HS25 LOADING.
4. STEPS SHALL BE 1" - 2" WIDE STEEL REINFORCED COPOLYMER POLYPROPYLENE PLASTIC CONFORMING TO ASTM C-478 AND SHALL BE CAST INTO DROP INLET SECTIONS BY THE PRECAST CONCRETE MANUFACTURER.
5. FACE OF PIPE SHALL NOT PROJECT MORE THAN 2" OR LESS THAN 1" FROM INSIDE WALL OF STRUCTURE.
6. ALL STRUCTURES WITH MULTIPLE PIPES SHALL HAVE A MINIMUM OF 1" OF OUTSIDE SURFACE BETWEEN HOLES, NO MORE THAN 75% OF A HORIZONTAL CROSS-SECTION SHALL BE HOLES, AND THERE SHALL BE NO HOLES CLOSER THAN 6" TO JOINTS.
7. FITTING FRAME TO FINAL GRADE MAY BE DONE WITH A SYNTHETIC RISER OR WITH PRECAST CONCRETE GRADE RINGS OF APPROPRIATE THICKNESS (3 COURSES MAX).
8. ALL PIPE INVERTS AND PENETRATION ANGLES SHALL BE FIELD VERIFIED PRIOR TO PRECASTING.
9. PRECAST SECTIONS SHALL HAVE A TONGUE AND GROOVE JOINT AND BE ASSEMBLED USING AN APPROVED SEALANT.
10. PROVIDE FLEXIBLE RUBBER SLEEVES CONFORMING TO ASTM C-923, RESILIENT, OF SIZE REQUIRED, FOR EACH PIPE CONNECTING TO STRUCTURE. SLEEVES SHALL BE CAST INTO PRECAST STRUCTURE BY THE MANUFACTURER FOR ALL PIPE PENETRATIONS.
11. CATCH BASIN GRATE ORIENTATION SHALL BE IN ACCORDANCE WITH STANDARD DRAWING D-15 FOR TYPE D GRATES. HOWEVER, THE TYPE OF GRATE AND FRAME SHALL CONFORM TO THE TOWN OF COLCHESTER PUBLIC WORKS SPECIFICATIONS. PAYMENT FOR THE CATCH BASIN GRATE AND FRAME SHALL BE INCIDENTAL TO ITEM 604.20 - PRECAST REINFORCED CONCRETE CATCH BASIN WITH CAST IRON GRATE.
12. PAYMENT FOR INSTALLATION OF THE CATCH BASIN SHALL BE MADE UNDER ITEM 604.20 - PRECAST REINFORCED CONCRETE CATCH BASIN WITH CAST IRON GRATE.
13. THE PRECAST CATCH BASIN SECTION SHALL BE COATED WITH A DAMP PROOFING OR SHALL BE CAST WITH A WATERPROOFING CONCRETE ADMIXTURE, PER THE TOWN OF COLCHESTER PUBLIC WORKS SPECIFICATIONS AND STANDARDS.

**DRYWELL NOTES:**

1. PRECAST CONCRETE SECTIONS SHALL CONFORM TO THE STANDARD SPECIFICATIONS AND ASTM C-478.
2. MINIMUM CONCRETE COMPRESSIVE STRENGTH: 4000 PSI AT 28-DAYS.
3. STEEL REINFORCING SHALL CONFORM TO ASTM A185 OR A82 FOR HS25 LOADING.
4. FITTING FRAME TO FINAL GRADE MAY BE DONE WITH A SYNTHETIC RISER OR WITH PRECAST CONCRETE GRADE RINGS OF APPROPRIATE THICKNESS (3 COURSES MAX).
5. PRECAST SECTIONS SHALL HAVE A TONGUE AND GROOVE JOINT AND BE ASSEMBLED USING AN APPROVED SEALANT.
6. PERFORATIONS IN WELL TILE: 18" HORIZONTAL, 12" VERTICAL.
7. STONE FILL SHALL BEGIN 24" BELOW TOP OF STRUCTURE AND END 12" BELOW LAST TILE.
8. PAYMENT FOR ALL WORK ASSOCIATED WITH THE INSTALLATION OF THE DRYWELL SHALL BE MADE UNDER ITEM 900.6204 - SPECIAL PROVISION (DRYWELL).
9. DRYWELL GRATE ORIENTATION SHALL BE IN ACCORDANCE WITH STANDARD DRAWING D-15 FOR TYPE D GRATES. HOWEVER, THE TYPE OF GRATE AND FRAME SHALL CONFORM TO THE TOWN OF COLCHESTER PUBLIC WORKS SPECIFICATIONS. PAYMENT FOR THE DRYWELL GRATE AND FRAME SHALL BE INCIDENTAL TO ITEM 900.6204 - SPECIAL PROVISION (DRYWELL).

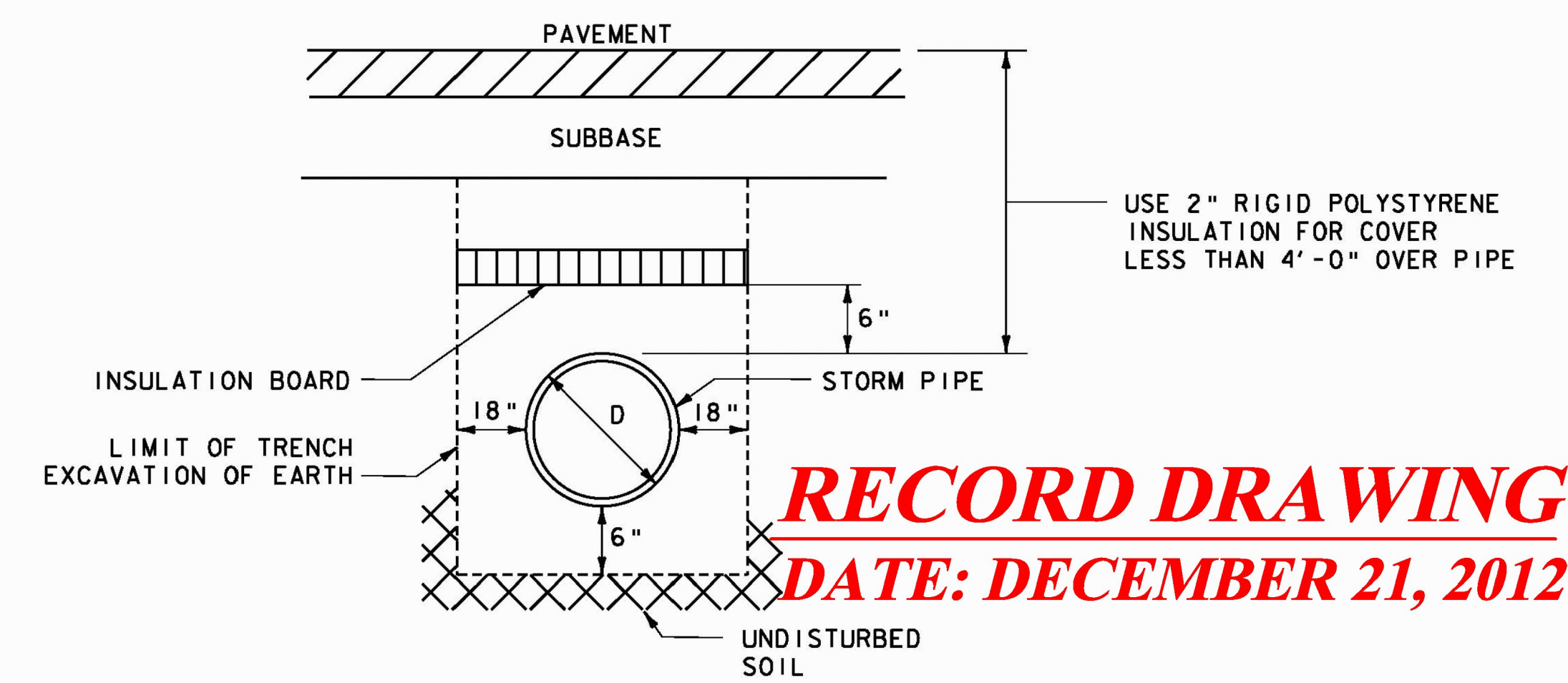


**PLAN VIEW FOR PRECAST REINFORCED CONCRETE DROP INLET**  
NOT TO SCALE



NOTE:  
1. REFERENCE VTRANS STANDARDS D-6, D-8, AND D-10 FOR ADDITIONAL DETAILS AND SPECIFICATIONS.

**TYPICAL PRECAST DROP INLET IN ROADWAY (SECTION A-A)**  
NOT TO SCALE



**STORM DRAIN TRENCH EXCAVATION DETAIL**  
N.T.S.

**RECORD DRAWING**  
**DATE: DECEMBER 21, 2012**

REVISION	BY	DATE
ADDENDUM - I	JBL	01/24/11
DROP INLET DETAIL	JBL	04/22/11

PROJECT NAME:	COLCHESTER CAMPUS CONNECTOR		
PROJECT NUMBER:	TCSP TCSE (007)		
FILE NAME:	... \plottiles\083-086.SwmDET.plt PLOT DATE: 4/22/2011		
PROJECT LEADER:	JBL	DRAWN BY:	PZA
DESIGNED BY:	TFD	CHECKED BY:	TFD
STORMWATER MGT. DET. SWM-4		SHEET	82 OF 153

