

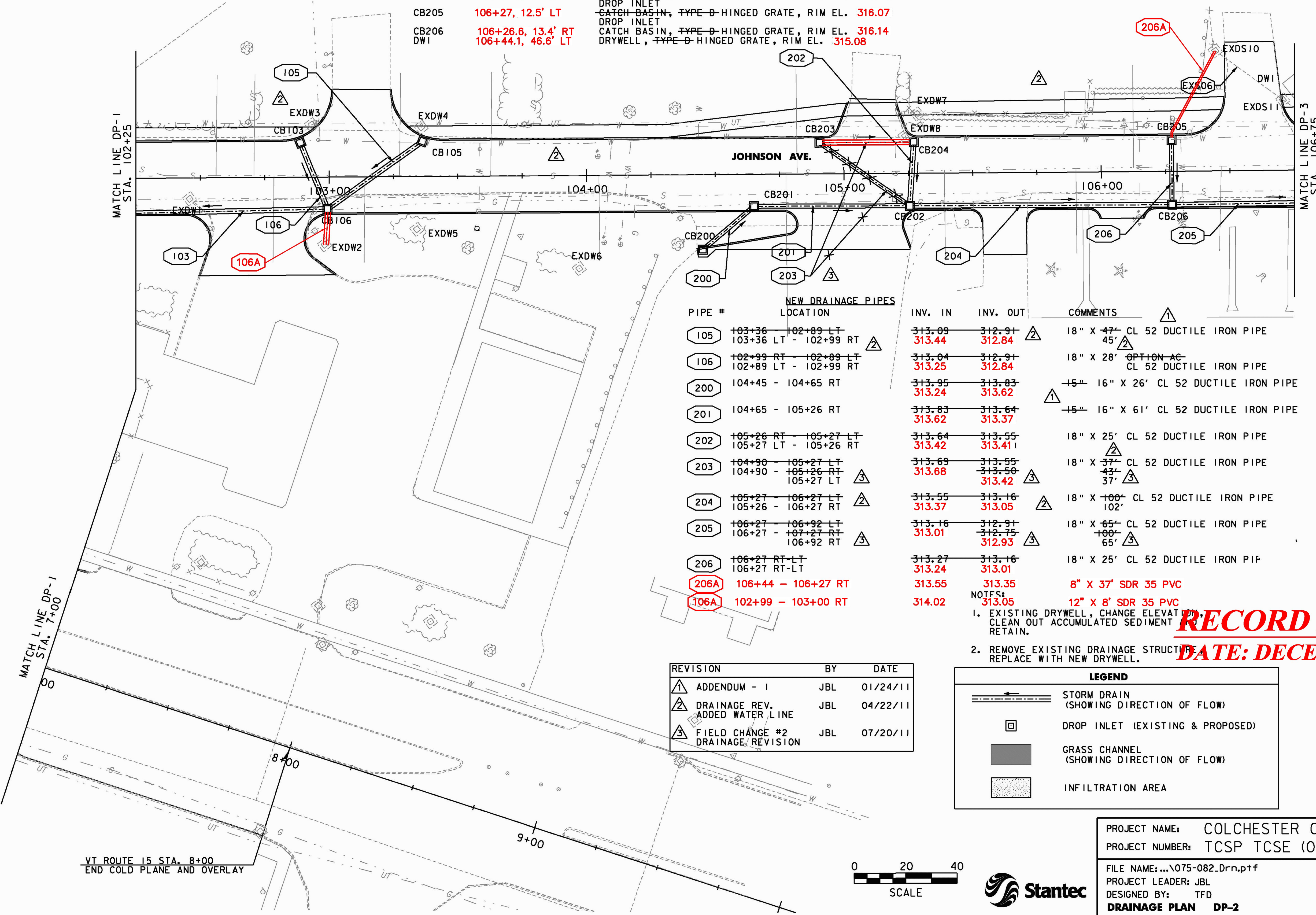
| EXISTING DRAINAGE PIPES | |
|-------------------------|--------------------|
| PIPE # | LOCATION |
| EX506 | 106+45 - 106+71 LT |

| NEW DRAINAGE STRUCTURES | |
|-------------------------|--------------------|
| STRUCTURE # | LOCATION |
| CB103 | 102+88.4, 13.7' LT |
| CB105 | 103+35.8, 14.2' LT |
| CB106 | 102+99.6, 13' RT |
| CB200 | 104+45.7, 28.4' RT |
| CB201 | 104+65.6, 13.1' RT |
| CB202 | 105+26.1, 13.6' RT |
| CB203 | 104+90, 13' LT |
| CB204 | 105+26.8, 12.8' LT |
| CB205 | 106+27, 12.5' LT |
| CB206 | 106+26.6, 13.4' RT |
| DW1 | 106+44.1, 46.6' LT |

| COMMENTS | |
|--|--|
| REMOVE | |
| CATCH BASIN, TYPE D HINGED GRATE, RIM EL. 316.73 | |
| DROP INLET | |
| CATCH BASIN, TYPE D HINGED GRATE, RIM EL. 316.86 | |
| DROP INLET | |
| CATCH BASIN, TYPE D HINGED GRATE, RIM EL. 316.53 | |
| CATCH BASIN, TYPE D HINGED GRATE, RIM EL. 316.97 | |
| CATCH BASIN, TYPE D HINGED GRATE, RIM EL. 316.83 | |
| CATCH BASIN, TYPE D HINGED GRATE, RIM EL. 316.70 | |
| CATCH BASIN, TYPE D HINGED GRATE, RIM EL. 316.66 | |
| DROP INLET | |
| CATCH BASIN, TYPE D HINGED GRATE, RIM EL. 316.45 | |
| DROP INLET | |
| CATCH BASIN, TYPE D HINGED GRATE, RIM EL. 316.07 | |
| DROP INLET | |
| CATCH BASIN, TYPE D HINGED GRATE, RIM EL. 316.14 | |
| DRYWELL, TYPE D HINGED GRATE, RIM EL. 315.08 | |

| EXISTING DRAINAGE STRUCTURES | |
|------------------------------|-----------|
| STRUCTURE # | LOCATION |
| EXDW1 | 102+46 RT |
| EXDW2 | 102+98 RT |
| EXDW3 | 102+93 LT |
| EXDW4 | 103+36 LT |
| EXDW5 | 103+34 RT |
| EXDW6 | 103+97 RT |
| EXDW7 | 105+29 LT |
| EXDW8 | 105+24 LT |
| EXDS10 | 106+45 LT |
| EXDS11 | 106+71 LT |

| COMMENTS | |
|------------|--|
| REMOVE | |
| SEE NOTE 1 | |
| REMOVE | |
| REMOVE | |
| SEE NOTE 1 | |
| RETAIN | |
| REMOVE | |
| REMOVE | |
| SEE NOTE 2 | |
| REMOVE | |



| NEW DRAINAGE PIPES | | INV. IN | INV. OUT | COMMENTS |
|--------------------|-----------------------|---------|----------|---------------------------------------|
| PIPE # | LOCATION | | | |
| 105 | 103+36 - 102+89 LT | 313.09 | 312.91 | 18" X 47' CL 52 DUCTILE IRON PIPE |
| | 103+36 LT - 102+99 RT | 313.44 | 312.84 | 45' |
| 106 | 102+99 RT - 102+89 LT | 313.04 | 312.91 | 18" X 28' CL 52 DUCTILE IRON PIPE |
| | 102+89 LT - 102+99 RT | 313.25 | 312.84 | OPTION AC |
| 200 | 104+45 - 104+65 RT | 313.95 | 313.83 | 15" 16" X 26' CL 52 DUCTILE IRON PIPE |
| | | 313.24 | 313.62 | |
| 201 | 104+65 - 105+26 RT | 313.83 | 313.64 | 15" 16" X 61' CL 52 DUCTILE IRON PIPE |
| | | 313.62 | 313.37 | |
| 202 | 105+26 RT - 105+27 LT | 313.64 | 313.55 | 18" X 25' CL 52 DUCTILE IRON PIPE |
| | 105+27 LT - 105+26 RT | 313.42 | 313.41 | |
| 203 | 104+90 - 105+27 LT | 313.69 | 313.55 | 18" X 37' CL 52 DUCTILE IRON PIPE |
| | 104+90 - 105+26 RT | 313.68 | 313.50 | 43' |
| | 105+27 LT | | 313.42 | 37' |
| 204 | 105+27 - 106+27 RT | 313.55 | 313.16 | 18" X 100' CL 52 DUCTILE IRON PIPE |
| | 105+26 - 106+27 RT | 313.37 | 313.05 | 102' |
| 205 | 106+27 - 106+92 LT | 313.16 | 312.91 | 18" X 65' CL 52 DUCTILE IRON PIPE |
| | 106+27 - 107+27 RT | 313.01 | 312.75 | 100' |
| | 106+92 RT | | 312.93 | 65' |
| 206 | 106+27 RT-LT | 313.27 | 313.16 | 18" X 25' CL 52 DUCTILE IRON PIPE |
| | 106+27 RT-LT | 313.24 | 313.01 | |
| 206A | 106+44 - 106+27 RT | 313.55 | 313.35 | 8" X 37' SDR 35 PVC |
| 106A | 102+99 - 103+00 RT | 314.02 | 313.05 | 12" X 8' SDR 35 PVC |

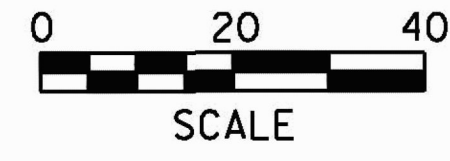
NOTES:
 1. EXISTING DRYWELL, CHANGE ELEVATION, CLEAN OUT ACCUMULATED SEDIMENT, RETAIN.
 2. REMOVE EXISTING DRAINAGE STRUCTURE, REPLACE WITH NEW DRYWELL.

RECORD DRAWING
DATE: DECEMBER 21, 2012

| REVISION | BY | DATE |
|-----------------------------------|-----|----------|
| ADDENDUM - 1 | JBL | 01/24/11 |
| DRAINAGE REV. ADDED WATER LINE | JBL | 04/22/11 |
| FIELD CHANGE #2 DRAINAGE REVISION | JBL | 07/20/11 |

| LEGEND | |
|--------|---|
| | STORM DRAIN (SHOWING DIRECTION OF FLOW) |
| | DROP INLET (EXISTING & PROPOSED) |
| | GRASS CHANNEL (SHOWING DIRECTION OF FLOW) |
| | INFILTRATION AREA |

| | |
|---|----------------------|
| PROJECT NAME: COLCHESTER CAMPUS CONNECTOR | PLOT DATE: 7/20/2011 |
| PROJECT NUMBER: TCSP TCSE (007) | DRAWN BY: PZA |
| FILE NAME: ...1075-082.Drn.ptf | CHECKED BY: GGG |
| PROJECT LEADER: JBL | DESIGNED BY: TFD |
| DRAINAGE PLAN DP-2 | SHEET 72 OF 153 |



VT ROUTE 15 STA. 8+00
 END COLD PLANE AND OVERLAY